

Umbrella Falls Trail #667



Recreation Opportunity Guide

Distance..... 3.1 miles (one way)
Elevation..... 4550-5750 feet
Snow Free July to October



Trail Highlights: This trail is on the southeast side of Mount Hood. The trail passes Umbrella Falls on the way to the Mount Hood Meadows Ski Area. The trail provides easy access to Timberline Trail #600.

Trail Description: This trail begins at its junction with Timberline Trail #600, heads southeast and ends at its junction with Sahalie Falls Trail #667C. From Timberline Trail #600 (5,800'), the trail heads southeast through a meadow and crosses two small creeks. After 0.4 miles, the trail switches back several times before heading north another 0.3 mile to Mitchell Creek (5,540'). Cross Mitchell Creek on the wooden bridge and continue downhill (southeast) 0.5 mile to Mount Hood Meadows Road (5,200'). (This is a good place to start the hike). Cross Mount Hood Meadows Road and follow the trail north 0.25 mile to Umbrella Falls (5,250'). Continue past the falls 0.25 mile to the first junction with Sahalie Falls Trail #667C. Continue from the junction, crossing several ski runs, 1.3 miles to the second junction with Sahalie Falls Trail #667C and the end of this trail. Hikers can return on this trail or take Sahalie Falls Trail #667C 2.1 miles back to the first junction with this trail.

Regulations & Leave No Trace Information:

- There are no bikes allowed between Timberline Trail #600 and Forest Road 3555.

Leave No Trace

- Plan Ahead and Prepare: Prepare for extreme weather, hazards and emergencies.
- Travel and Camp on Durable Surfaces: Use established trails and campsites.
- Dispose of Waste Properly: Pack out all trash, leftover food and litter.
- Leave What You Find: Avoid introducing or transporting non-native species.
- Minimize Campfire Impacts: Use established fire rings & keep fires small.
- Respect Wildlife: Control pets at all times.
- Be Considerate of Other Visitors: Avoid loud voices and noises.

For current trail conditions and more recreation information go to:

<http://www.fs.usda.gov/mthood>

Map and driving directions on next page

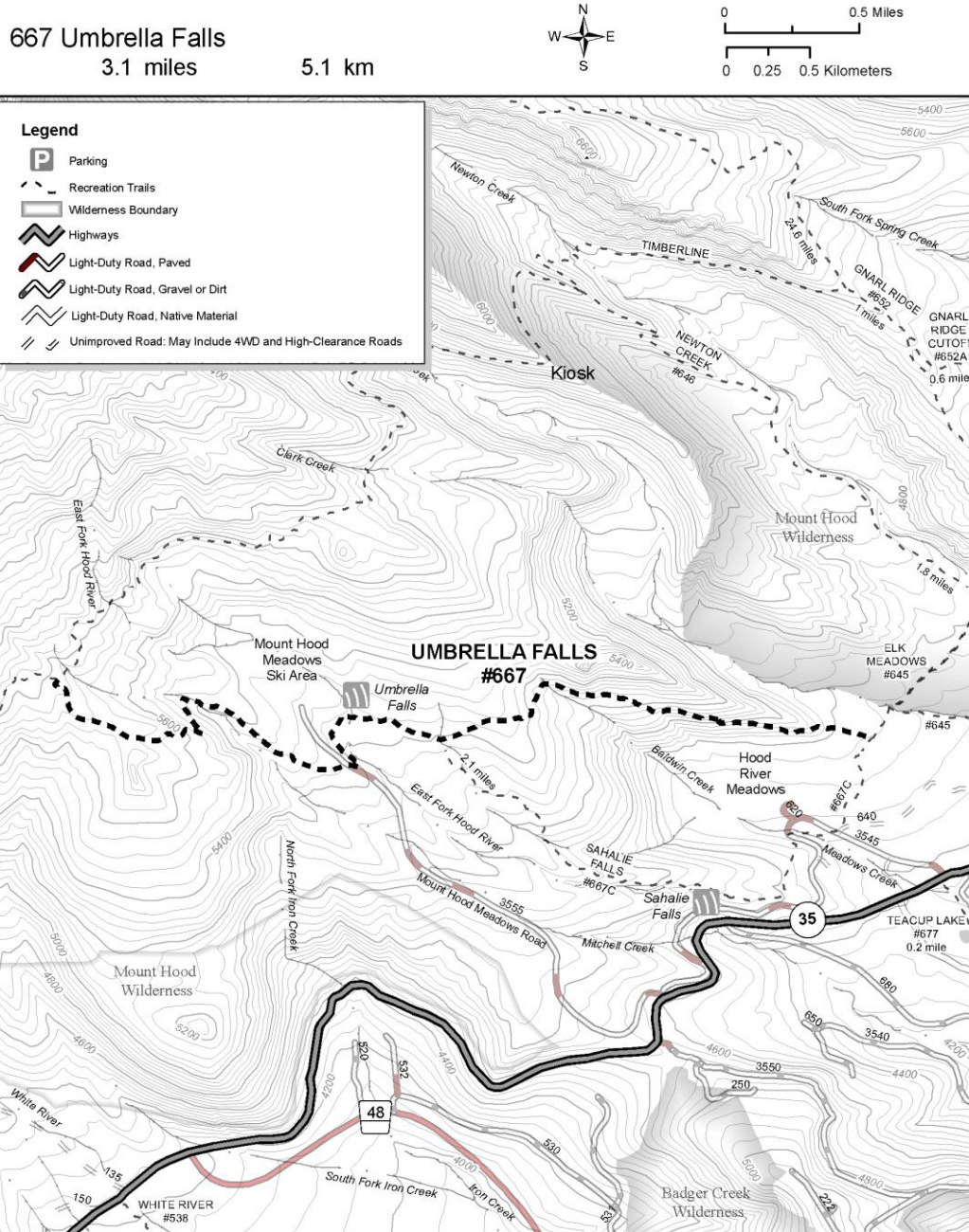
Mt. Hood National Forest
16400 Champion Way
Sandy, OR 97055
503-668-1700

Hood River Ranger District
6780 Hwy 35
Parkdale, Oregon 97041
541-352-6002

The USDA is an equal opportunity provider and employer.



Directions to Trailhead: This trail starts at Timberline Trail #600, 1.3 miles west of Mount Hood Meadows Ski Area. The trail can also be accessed midway from the Mount Hood Meadows Road (Forest Road 3555) and Sahalie Falls Trail #667C. To reach the trail from Mount Hood Meadows Road from Portland, travel approximately 31 miles east of Sandy on US Hwy 26 to the intersection with Oregon Hwy 35. Turn north onto Oregon Hwy 35 and travel 6.4 miles to Mount Hood Meadows Road (Bennett Pass Road/Forest Road 3555). Turn right onto Mount Hood Meadows Road, approximately 0.5 mile southwest of milepost 64, and follow it north 1.5 miles toward Mount Hood Meadows Lodge. The poorly marked trailhead is on the east side of the road approximately 0.25 mile south of the Mount Hood Meadows Lodge parking area.



Recommended maps: Hood River Ranger District

