

UNITED STATES DEPARTMENT OF AGRICULTURE
UNITED STATES FOREST SERVICE
OZARK-ST. FRANCIS NATIONAL FORESTS
Boston Mountain Ranger District

Order No. 08-10-05-19-033

FOREST ORDER

WHITE ROCK MOUNTAIN BLUFFS - AREA CLOSURE

Pursuant to 36 CFR 261.50, the following acts are prohibited on the area, roads, and trails described in this order as the bluffs and rock outcrops in and around the White Rock Mountain Recreation Area and White Rock Mountain Rim Trail. This area is within the Ozark-St. Francis National Forests and is depicted in the survey attached hereto and incorporated herein. This closure is effective from the date signed by the Forest Supervisor through January 1, 2022 or rescinded by an authorized Forest Official, whichever occurs first.

The following are prohibited acts as set forth in 36 CFR 261.53:

1. Being on the rock surface of the White Rock Mountain area bluffs for the protection of threatened and endangered species of the order Chiroptera. (36 CFR 261.53 (a))
2. Being on the rock surface of the White Rock Mountain area bluffs for the protection of the White Rock Special Interest Area, specified for its geological interest. (36 CFR 261.53 (c))
3. Being on the rock surface of the White Rock Mountain area bluffs for the public safety of the recreational hikers that frequent the White Rock Rim Trail. (36 CFR 261.53 (e))

Pursuant to 36 CFR 261.50(e), the following persons are exempt from this order:

1. Persons with a permit specifically authorizing the otherwise prohibited act or omission.
2. Any Federal, State or local officer or member of an organized rescue or fire fighting force in the performance of an official duty with approval of District Ranger.

Executed in Russellville, Arkansas, this 22 day of February 2021.

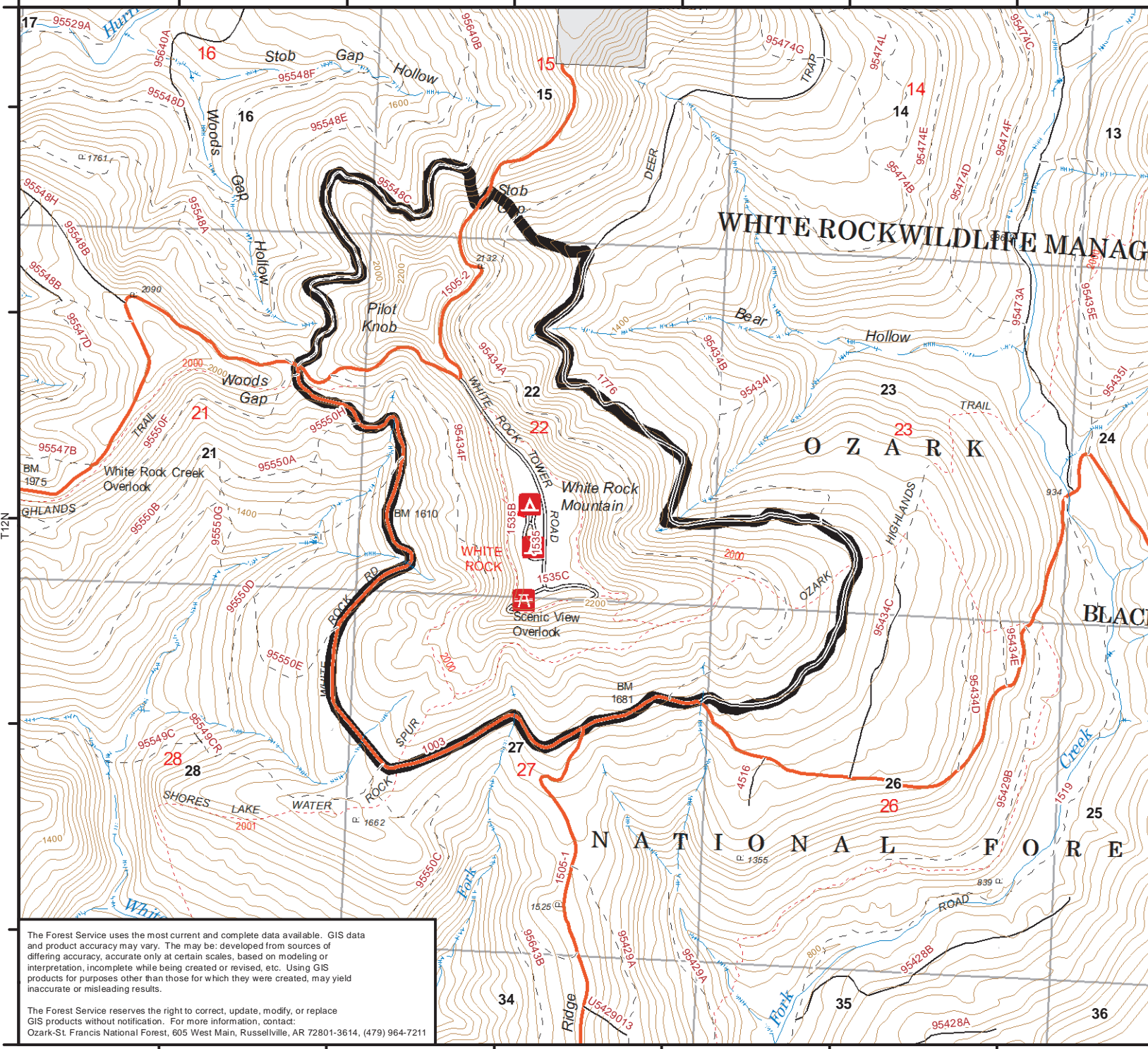


LORI D. WOOD

Forest Supervisor

Ozark-St. Francis National Forests

Violation of these prohibitions is punishable by a fine of not more than \$5,000 for an individual and \$10,000 for an organization, or imprisonment for not more than six months, or both. (16 U.S.C. 551 and 18 U.S.C. 3559 and 3571).



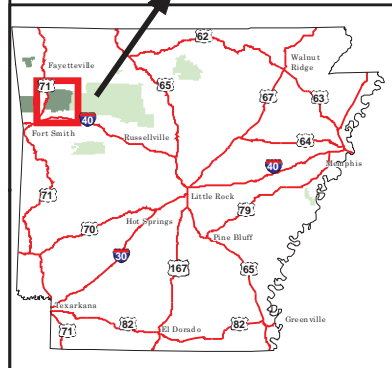
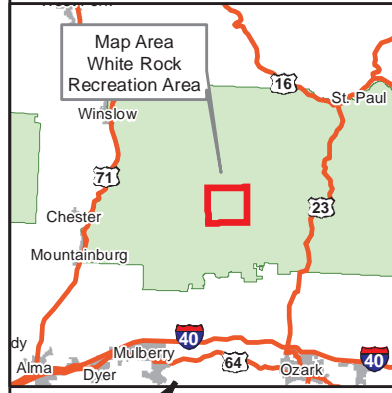
35°42'30"N
35°42'0"N
35°41'30"N
35°41'0"N
35°40'30"N

White Rock Area Rappelling Supervisor's Order 08-10-05-19-036

Ozark-St. Francis National Forests
Boston Mountain Ranger District

Franklin County, Arkansas
Legal Description:
T12N-R28W Sec. 22

- Campground
- Picnic & Day Use
- Trailhead
- Roads by Operation Maintenance Level**
 - Closed
 - High Clearance Vehicles
 - Suitable for Passenger Cars
 - Moderate Degree of User Comfort
 - High Degree of User Comfort
 - Recreation Area
 - Wild and Scenic River Corridor
 - Scenic Byway Corridor
 - Trail
 - Private Land



The Forest Service uses the most current and complete data available. GIS data and product accuracy may vary. The may be developed from sources of differing accuracy, accurate only at certain scales, based on modeling or interpretation, incomplete while being created or revised, etc. Using GIS products for purposes other than those for which they were created, may yield inaccurate or misleading results.

The Forest Service reserves the right to correct, update, modify, or replace GIS products without notification. For more information, contact:
Ozark-St. Francis National Forest, 605 West Main, Russellville, AR 72801-3614, (479) 964-7211