

## Trail Etiquette

- Downhill skiers have the right of way.
- Non-skiers: keep left and off ski tracks.
- Natural features such as trees, stumps, rocks, and other obstructions may be present on trails.
- Be respectful of wildlife and private property.
- Be courteous to other trail users, especially when passing.
- Yield to grooming equipment at all times. Always move to the opposite side they are approaching on.

## Stay in your lanes for the safety and enjoyment of everyone!

- **Classic skiing:** Groomed classic lanes are on the right
- **Skate skiing:** Middle of the trail, and avoid classic lane with tips
- **Foot traffic:** Stay far left in the ungroomed margins of the trails

## Dogs are allowed

- Remove all waste with provided bags or 'flick' from trail surface.
- Pets must be leashed or under control at all times.
- Keep them off groomed classic lanes.

## Directions

Take Highway 93 north from Whitefish, MT. Turn left after mile marker 139 onto Farm to Market Road. Go approximately 1 mile and turn right on Star Meadow Road (Road 539). Travel 1 mile and turn right at the Round Meadow sign to parking area.



Trails are groomed by Glacier Nordic Club in partnership with the U.S. Forest Service. Thank Glacier Nordic Club for their help providing high-quality winter trails on your public lands!

Find up-to-date grooming reports on their website:

<https://www.glaciernordicclub.org/>

## Flathead National Forest Contact Information

### Tally Lake Ranger District/Supervisor's Office

650 Wolfpack Way  
Kalispell, MT 59901  
Phone: 406-758-5204



[www.facebook.com/  
discovertheflathead](https://www.facebook.com/discovertheflathead)

[https://www.fs.usda.gov/  
flathead](https://www.fs.usda.gov/flathead)



**USDA is an equal opportunity provider,  
employer, and lender.**

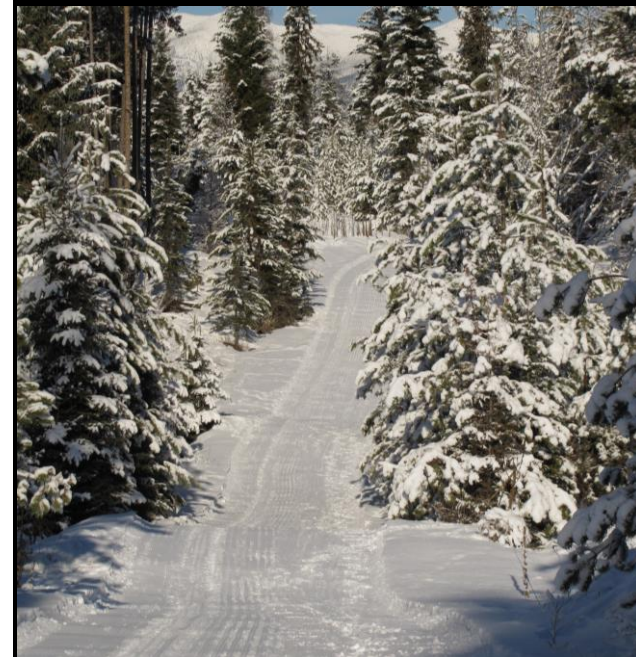


**Forest Service**  
U.S. DEPARTMENT OF AGRICULTURE

Northern Region  
Flathead National Forest

R1-15-05 December 2022

# Round Meadow Winter Trails

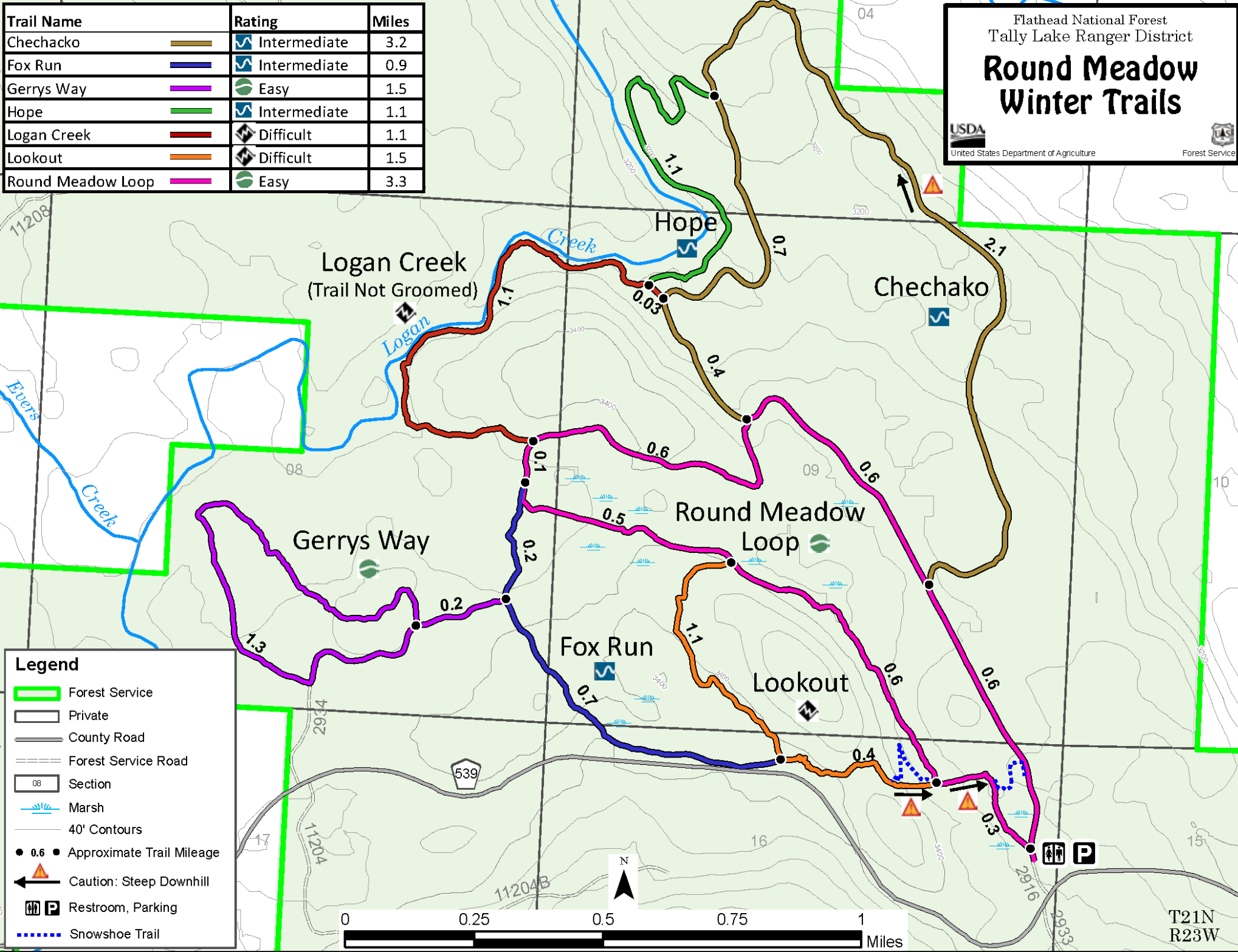


| Trail Name        |  | Rating       | Miles |
|-------------------|--|--------------|-------|
| Chechacko         |  | Intermediate | 3.2   |
| Fox Run           |  | Intermediate | 0.9   |
| Gerrys Way        |  | Easy         | 1.5   |
| Hope              |  | Intermediate | 1.1   |
| Logan Creek       |  | Difficult    | 1.1   |
| Lookout           |  | Difficult    | 1.5   |
| Round Meadow Loop |  | Easy         | 3.3   |

Flathead National Forest  
Tally Lake Ranger District

# Round Meadow Winter Trails

United States Department of Agriculture Forest Service



**Legend**

- Forest Service
- Private
- County Road
- Forest Service Road
- Section
- Marsh
- 40' Contours
- Approximate Trail Mileage
- Caution: Steep Downhill
- Restroom, Parking
- Snowshoe Trail



T21N  
R23W