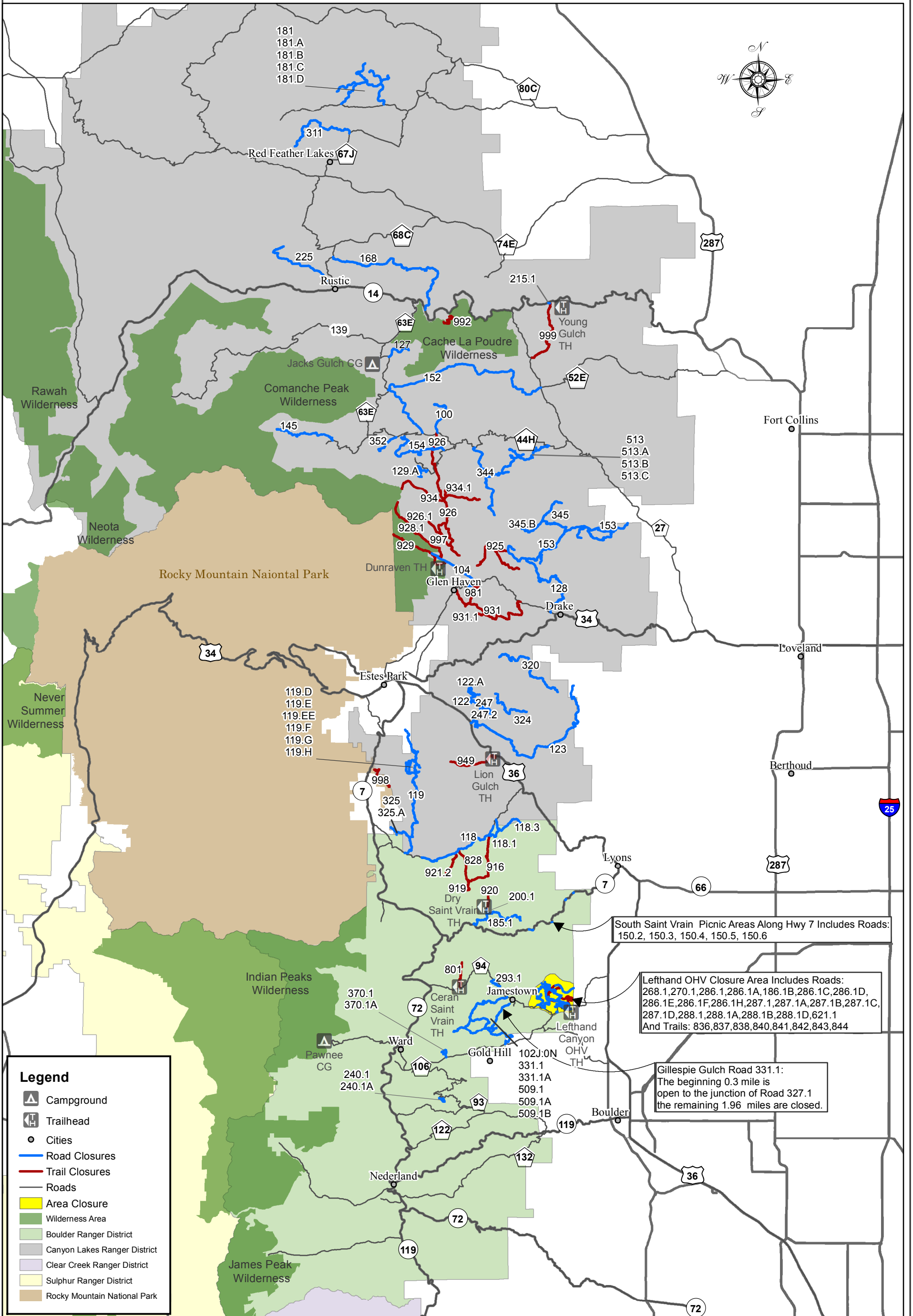




Arapaho and Roosevelt National Forests
Exhibit A (Applies to National Forest System Lands Only)
Order No. ARP - 2014- 01



Legend

- Campground
- Trailhead
- Cities
- Road Closures
- Trail Closures
- Roads
- Area Closure
- Wilderness Area
- Boulder Ranger District
- Canyon Lakes Ranger District
- Clear Creek Ranger District
- Sulphur Ranger District
- Rocky Mountain National Park

South Saint Vrain Picnic Areas Along Hwy 7 Includes Roads: 150.2, 150.3, 150.4, 150.5, 150.6

Lefthand OHV Closure Area Includes Roads: 268.1,270.1,286.1,286.1A,186.1B,286.1C,286.1D, 286.1E,286.1F,286.1H,287.1,287.1A,287.1B,287.1C, 287.1D,288.1,288.1A,288.1B,288.1D,621.1 And Trails: 836,837,838,840,841,842,843,844

Gillespie Gulch Road 331.1: The beginning 0.3 mile is open to the junction of Road 327.1 the remaining 1.96 miles are closed.