

- Legend**

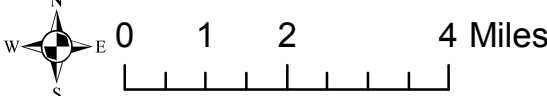
--- Existing Open Road

--- Existing Motorized Trails

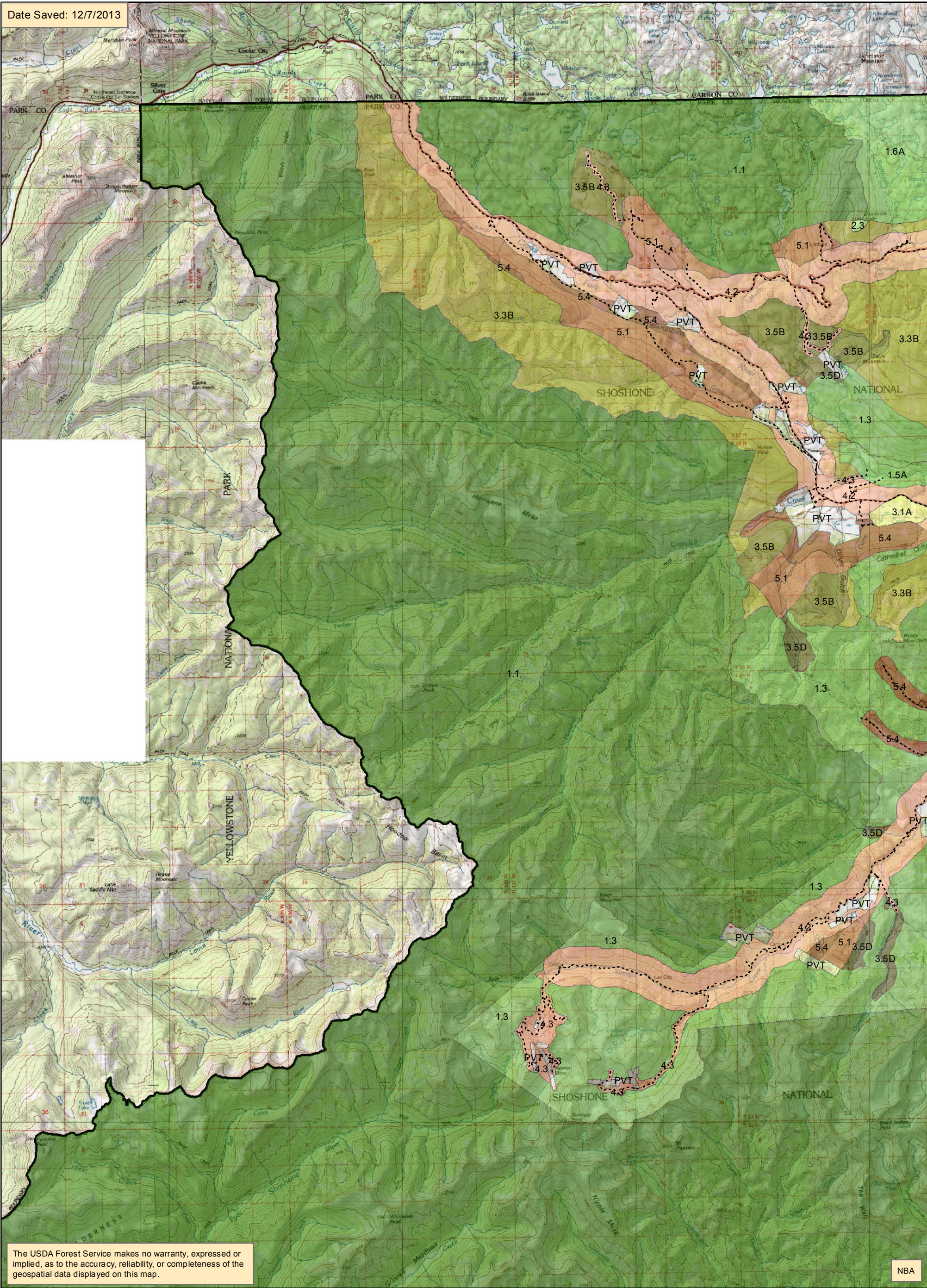
**management area**

  - 1.1 Wilderness
  - 1.1A Glacier Addition
  - 1.3 Back Cntry NonMotorized
  - 1.5A Clarks Fork Wild River
  - 1.6A High Lakes WSA
  - 1.6B Dunoir SMU
  - 2.2A Line Creek RNA
  - 2.3 Proposed RNA
  - 3.1A Swamp Lake SIA
  - 3.1B Prpsd Little Popo Agie SIA
  - 3.1C Prpsd Sawtooth Peatbeads SIA
  - 3.3A Back Cntry Motorized
  - 3.3B Back Cntry Winter Motorized
  - 3.3C Back Cntry Summer Motorized
  - 3.5A Back Cntry Restoration Motorized
  - 3.5B Back Cntry Restoration Win Motor
  - 3.5C Back Cntry Restoration Sum Mot
  - 3.5D Back Cntry Restoration Nonmot
  - 4.2 Travel Corridor
  - 4.3 Back Cntry Access Corridor
  - 4.5A Kiwin SIA
  - 5.1 Mngd Forest & Rangelands
  - 5.2 Public Water Supply
  - 5.4 Mngd Big Game Crucial Winter Rng
  - 8.2 Ski-based Resort

Map 79 (pg 1 of 8)  
Alternative G  
management areas  
west Clarks Fork



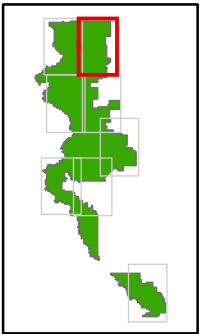
Date Saved: 12/7/2013



The USDA Forest Service makes no warranty, expressed or implied, as to the accuracy, reliability, or completeness of the geospatial data displayed on this map.

NBA





Legend

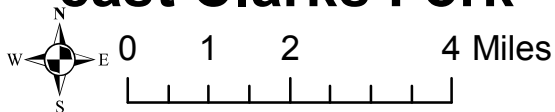
- Existing Open Road

--- Existing Motorized Trails

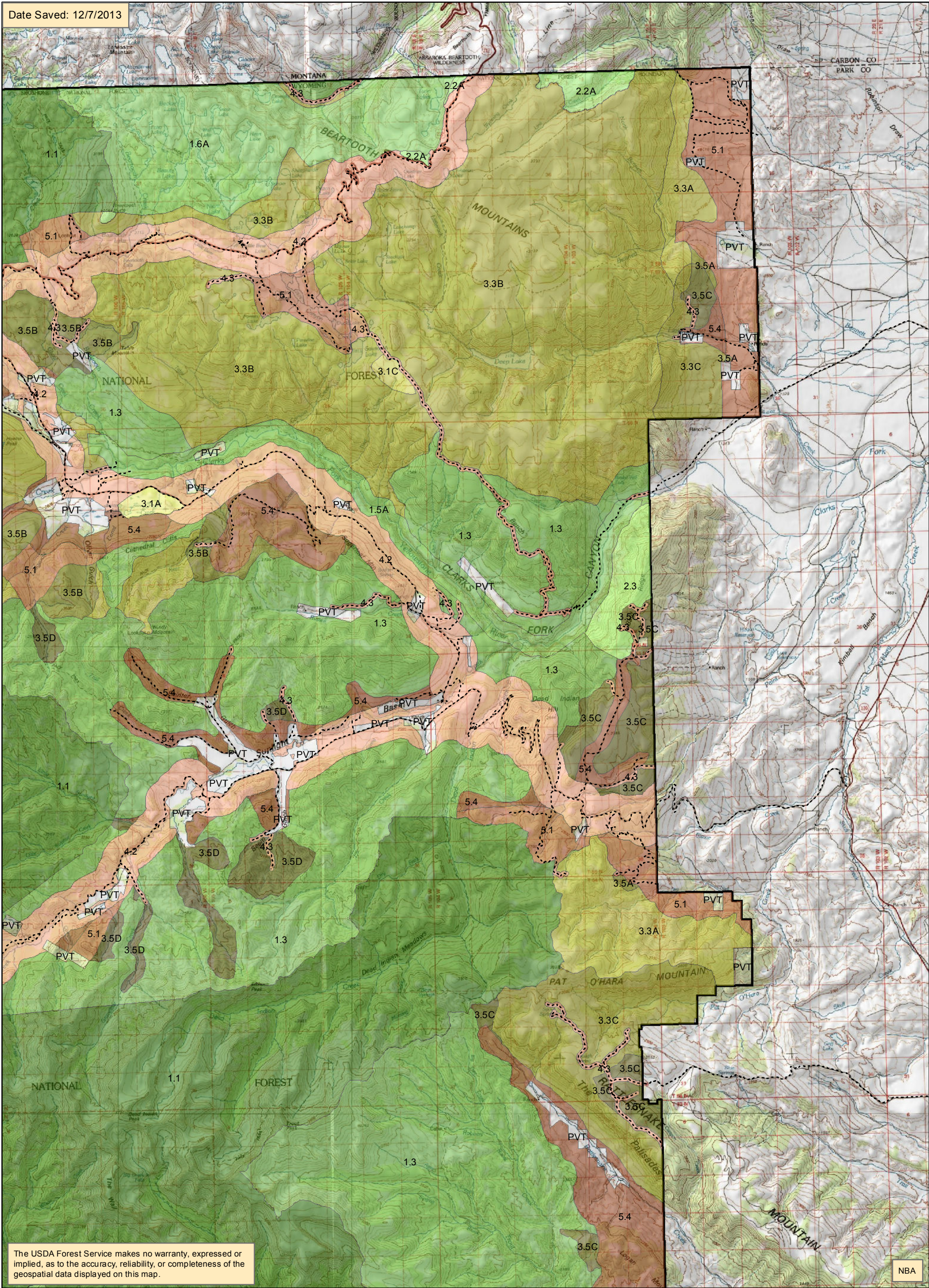
**management area**

  - 1.1 Wilderness
  - 1.1A Glacier Addition
  - 1.3 Back Cntry NonMotorized
  - 1.5A Clarks Fork Wild River
  - 1.6A High Lakes WSA
  - 1.6B Dunoir SMU
  - 2.2A Line Creek RNA
- 2.3 Proposed RNA
  - 3.1A Swamp Lake SIA
  - 3.1B Prpsd Little Popo Agie SIA
  - 3.1C Prpsd Sawtooth Peatbeads SIA
  - 3.3A Back Cntry Motorized
  - 3.3B Back Cntry Winter Motorized
  - 3.3C Back Cntry Summer Motorized
  - 3.5A Back Cntry Restoration Motorized
  - 3.5B Back Cntry Restoration Win Motor
- 3.5C Back Cntry Restoration Sum Mot
  - 3.5D Back Cntry Restoration Nonmot
  - 4.2 Travel Corridor
  - 4.3 Back Cntry Access Corridor
  - 4.5A Kiwin SIA
  - 5.1 Mngd Forest & Rangelands
  - 5.2 Public Water Supply
  - 5.4 Mngd Big Game Crucial Winter Rng
  - 8.2 Ski-based Resort

Map 79 (pg 2 of 8)  
Alternative G  
management areas  
east Clarks Fork



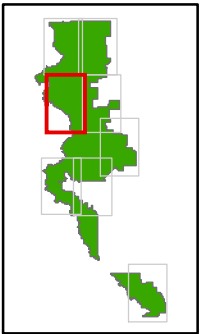
Date Saved: 12/7/2013



The USDA Forest Service makes no warranty, expressed or implied, as to the accuracy, reliability, or completeness of the geospatial data displayed on this map.

NBA





- Legend**

--- Existing Open Road

--- Existing Motorized Trails

**management area**

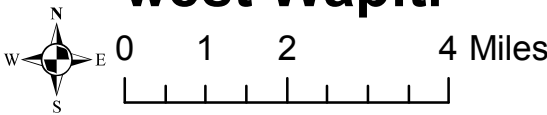
  - 1.1 Wilderness
  - 1.1A Glacier Addition
  - 1.3 Back Cntry NonMotorized
  - 1.5A Clarks Fork Wild River
  - 1.6A High Lakes WSA
  - 1.6B Dunoir SMU
  - 2.2A Line Creek RNA
  - 2.3 Proposed RNA
  - 3.1A Swamp Lake SIA
  - 3.1B Prpsd Little Popo Agie SIA
  - 3.1C Prpsd Sawtooth Peatbeads SIA
  - 3.3A Back Cntry Motorized
  - 3.3B Back Cntry Winter Motorized
  - 3.3C Back Cntry Summer Motorized
  - 3.5A Back Cntry Restoration Motorized
  - 3.5B Back Cntry Restoration Win Motor
  - 3.5C Back Cntry Restoration Sum Mot
  - 3.5D Back Cntry Restoration Nonmot
  - 4.2 Travel Corridor
  - 4.3 Back Cntry Access Corridor
  - 4.5A Kiwin SIA
  - 5.1 Mngd Forest & Rangelands
  - 5.2 Public Water Supply
  - 5.4 Mngd Big Game Crucial Winter Rng
  - 8.2 Ski-based Resort

Map 79 (pg 3 of 8)

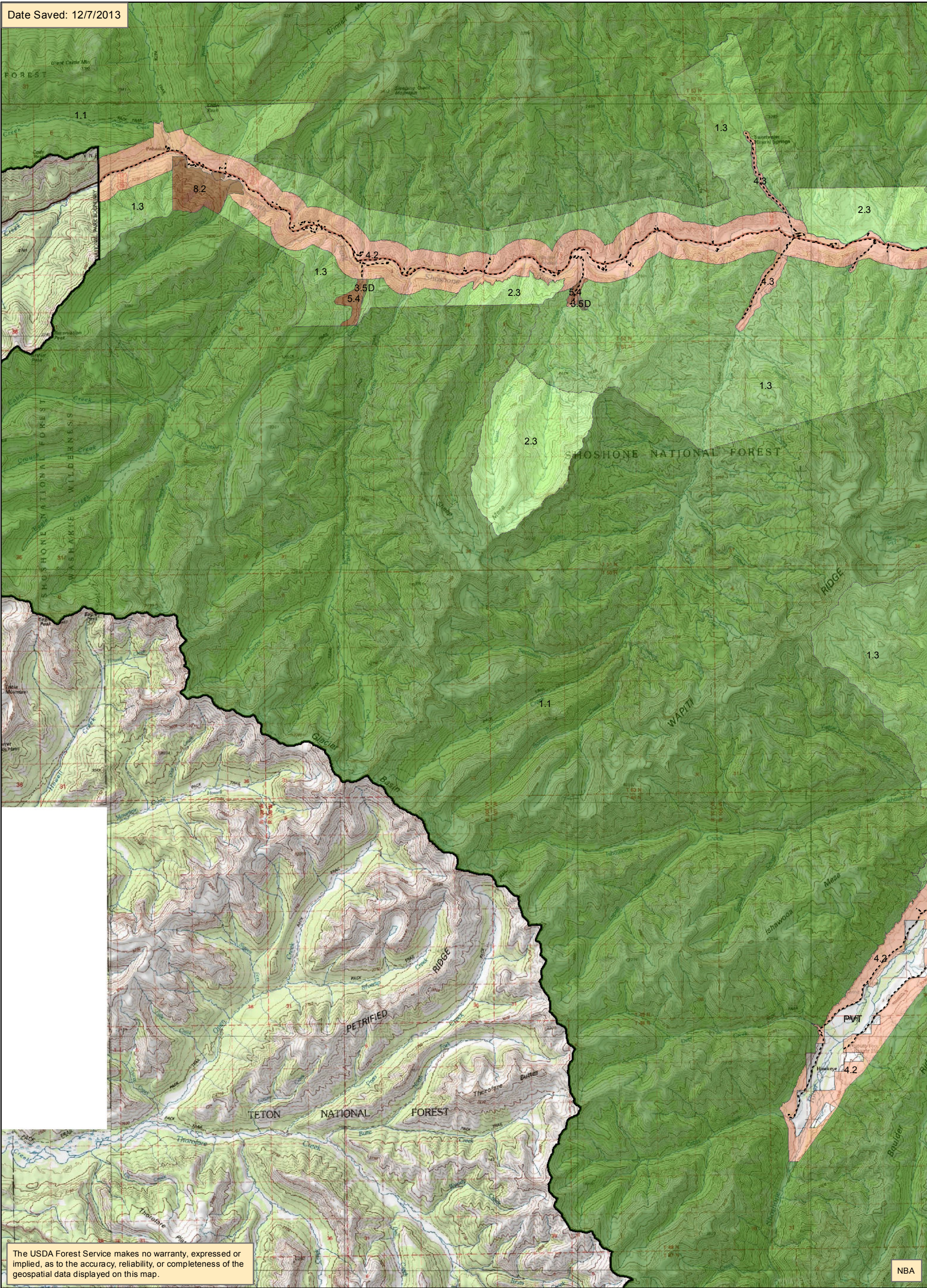
Alternative G

management areas

west Wapiti

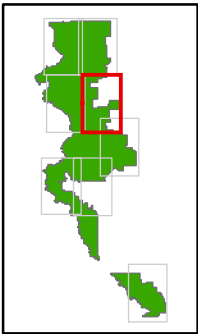


Date Saved: 12/7/2013



The USDA Forest Service makes no warranty, expressed or implied, as to the accuracy, reliability, or completeness of the geospatial data displayed on this map.





- Legend**

--- Existing Open Road

--- Existing Motorized Trails

**management area**

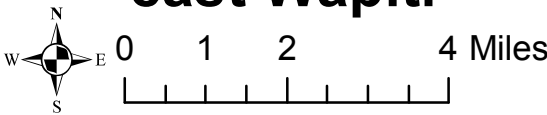
  - 1.1 Wilderness
  - 1.1A Glacier Addition
  - 1.3 Back Cntry NonMotorized
  - 1.5A Clarks Fork Wild River
  - 1.6A High Lakes WSA
  - 1.6B Dunoir SMU
  - 2.2A Line Creek RNA
  - 2.3 Proposed RNA
  - 3.1A Swamp Lake SIA
  - 3.1B Prpsd Little Popo Agie SIA
  - 3.1C Prpsd Sawtooth Peatbeads SIA
  - 3.3A Back Cntry Motorized
  - 3.3B Back Cntry Winter Motorized
  - 3.3C Back Cntry Summer Motorized
  - 3.5A Back Cntry Restoration Motorized
  - 3.5B Back Cntry Restoration Win Motor
  - 3.5C Back Cntry Restoration Sum Mot
  - 3.5D Back Cntry Restoration Nonmot
  - 4.2 Travel Corridor
  - 4.3 Back Cntry Access Corridor
  - 4.5A Kiwin SIA
  - 5.1 Mngd Forest & Rangelands
  - 5.2 Public Water Supply
  - 5.4 Mngd Big Game Crucial Winter Rng
  - 8.2 Ski-based Resort

Map 79 (pg 4 of 8)

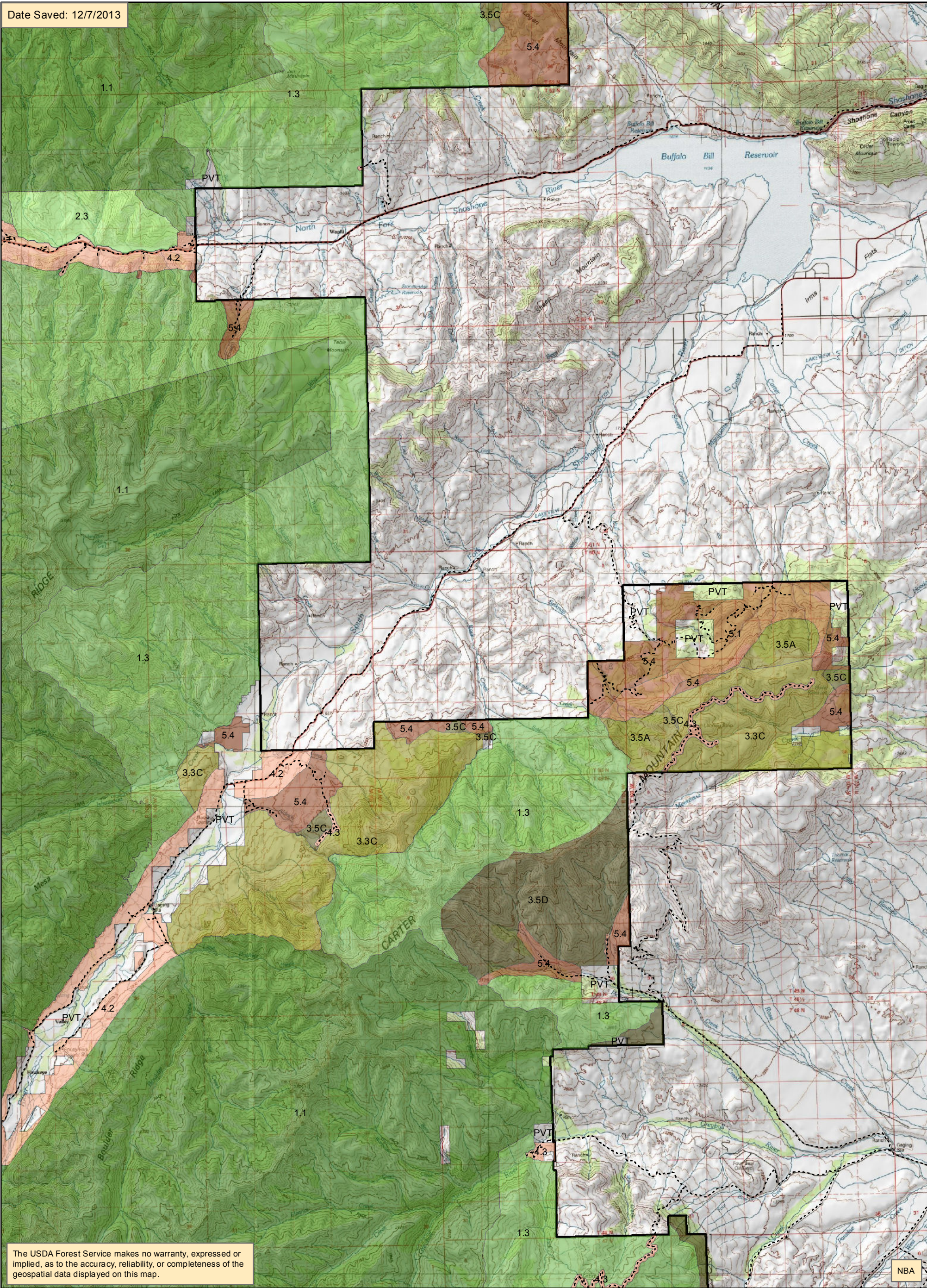
Alternative G

management areas

east Wapiti



Date Saved: 12/7/2013



The USDA Forest Service makes no warranty, expressed or implied, as to the accuracy, reliability, or completeness of the geospatial data displayed on this map.

NBA





- - - Existing Open Road  
- - - Existing Motorized Trails

**management area**

- ☐ 1.1 Wilderness
- ☐ 1.1A Glacier Addition
- ☐ 1.3 Back Cntry NonMotorize
- ☐ 1.5A Clarks Fork Wild River
- ☐ 1.6A High Lakes WSA
- ☐ 1.6B Dunoir SMU
- ☐ 2.2A Line Creek RNA

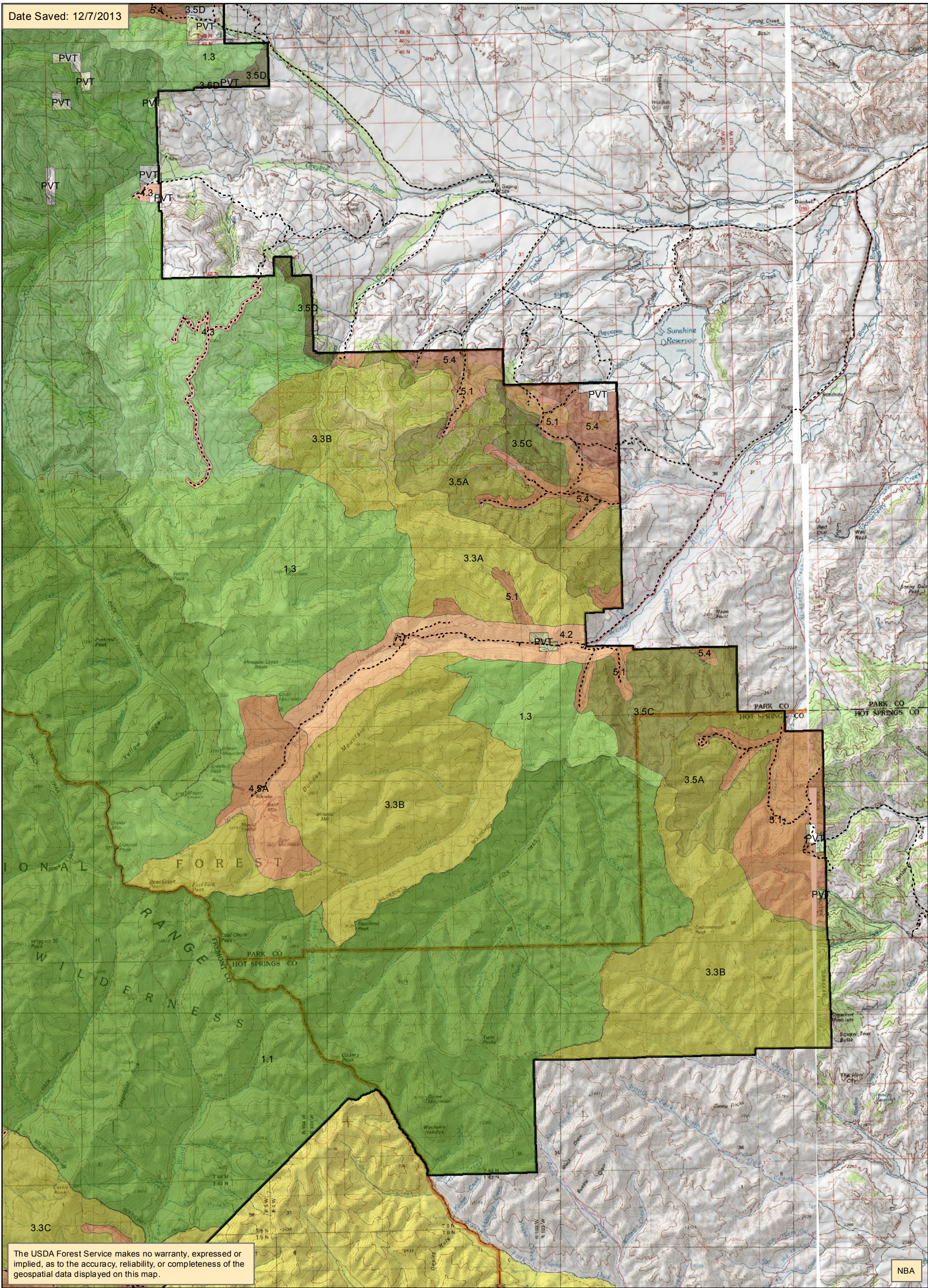
- 2.3 Proposed RNA
- 3.1A Swamp Lake SIA
- 3.1B Prpsd Little Popo Agie SIA
- 3.1C Prpsd Sawtooth Peatbeads SIA
- 3.3A Back Cntry Motorized
- 3.3B Back Cntry Winter Motorized
- 3.3C Back Cntry Summer Motorized
- 3.5A Back Cntry Restoration Motorized
- 3.5B Back Cntry Restoration Win Motorized

- 3.5C Back Cntry Restoration Sum Mot
- 3.5D Back Cntry Restoration Nonmot
- 4.2 Travel Corridor
- 4.3 Back Cntry Access Corridor
- 4.5A Kinwin SIA
- 5.1 Mngd Forest & Rangelands
- 5.2 Public Water Supply
- 5.4 Mngd Big Game Crucial Winter Rng
- 8.2 Ski-based Resort

**Map 79 (pg 5 of 8)**  
**Alternative G**  
**management areas**  
**Greybull**



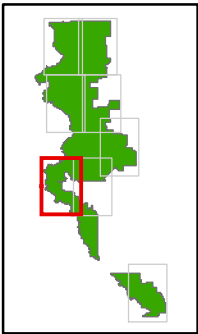
Date Saved: 12/7/2013



The USDA Forest Service makes no warranty, expressed or implied, as to the accuracy, reliability, or completeness of the geospatial data displayed on this map.

NBA





- Legend**

--- Existing Open Road

--- Existing Motorized Trails

**management area**

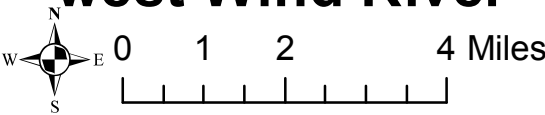
  - 1.1 Wildmess
  - 1.1A Glacier Addition
  - 1.3 Back Cntry NonMotorized
  - 1.5A Clarks Fork Wild River
  - 1.6A High Lakes WSA
  - 1.6B Dunoir SMU
  - 2.2A Line Creek RNA
  - 2.3 Proposed RNA
  - 3.1A Swamp Lake SIA
  - 3.1B Prpsd Little Popo Agie SIA
  - 3.1C Prpsd Sawtooth Peatbeads SIA
  - 3.3A Back Cntry Motorized
  - 3.3B Back Cntry Winter Motorized
  - 3.3C Back Cntry Summer Motorized
  - 3.5A Back Cntry Restoration Motorized
  - 3.5B Back Cntry Restoration Win Motor
  - 3.5C Back Cntry Restoration Sum Mot
  - 3.5D Back Cntry Restoration Nonmot
  - 4.2 Travel Corridor
  - 4.3 Back Cntry Access Corridor
  - 4.5A Kiwin SIA
  - 5.1 Mngd Forest & Rangelands
  - 5.2 Public Water Supply
  - 5.4 Mngd Big Game Crucial Winter Rng
  - 8.2 Ski-based Resort

Map 79 (pg 6 of 8)

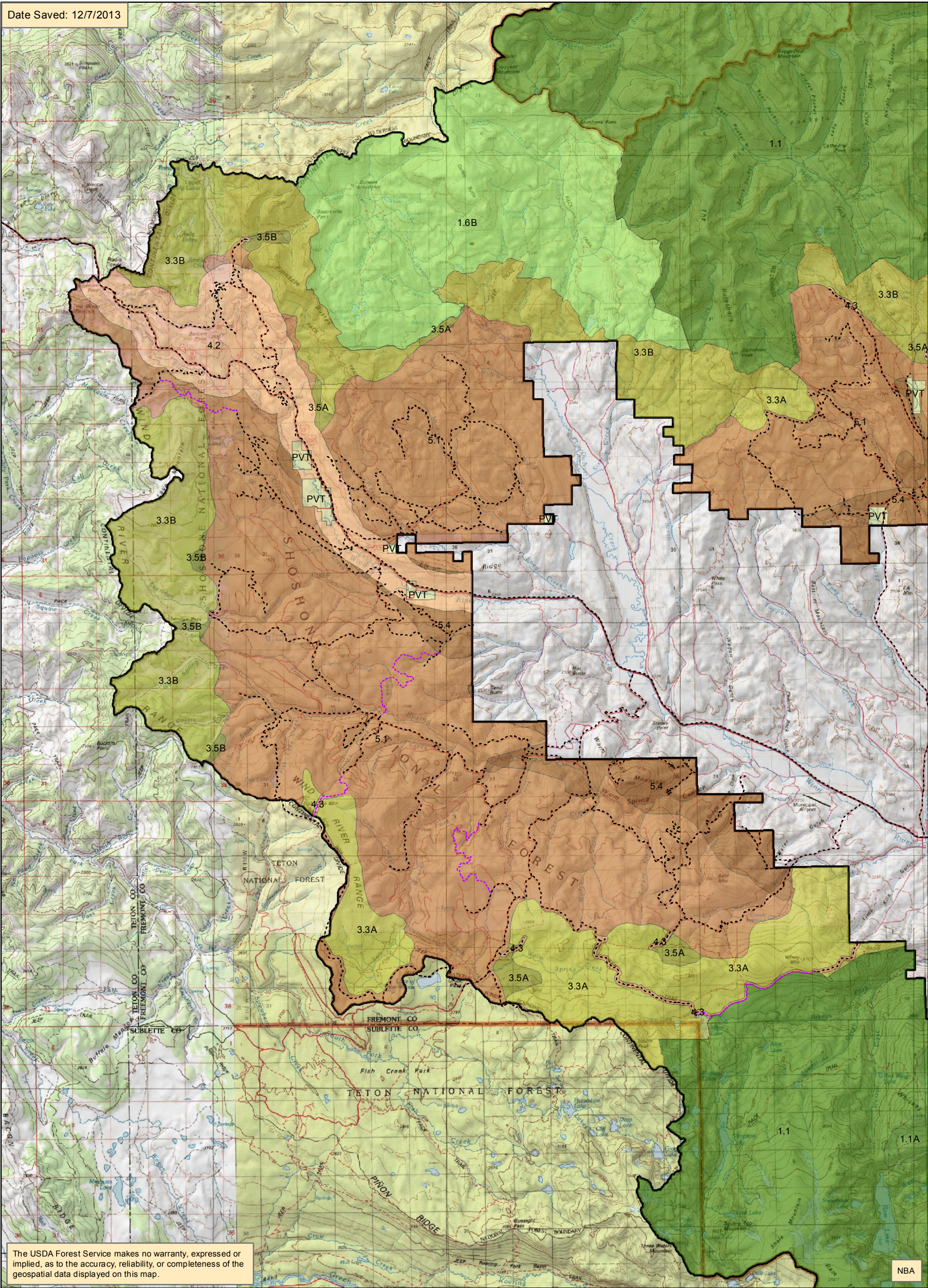
Alternative G

management areas

west Wind River



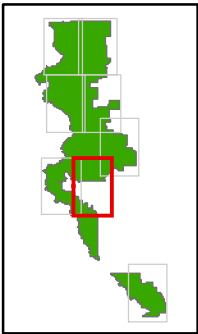
Date Saved: 12/7/2013



The USDA Forest Service makes no warranty, expressed or implied, as to the accuracy, reliability, or completeness of the geospatial data displayed on this map.

NBA





Legend

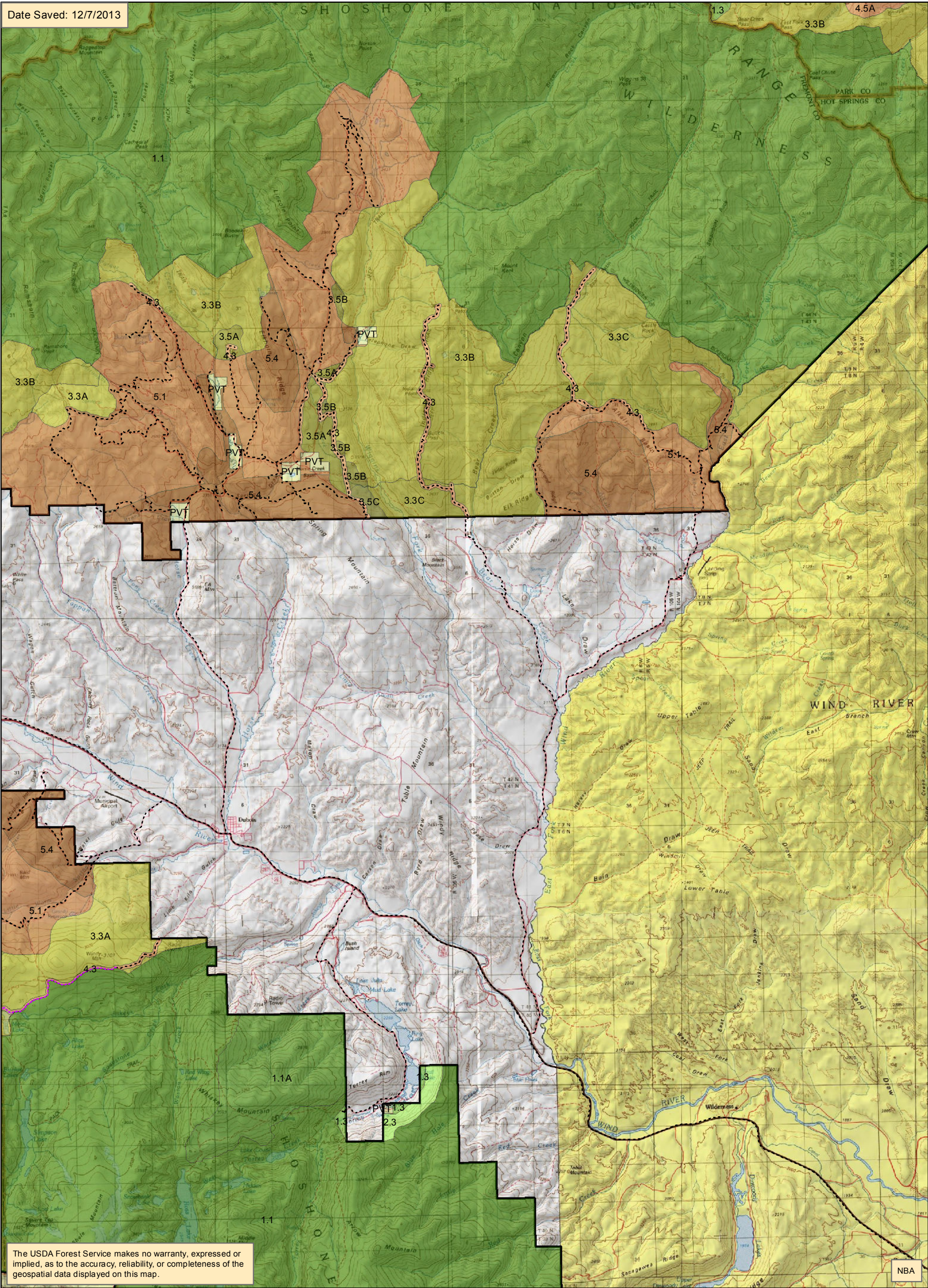
- Existing Open Road

--- Existing Motorized Trails

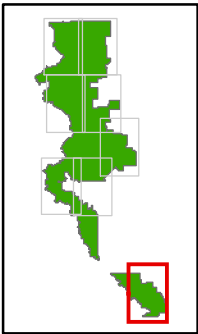
**management area**

  - 1.1 Wilderness
  - 1.1A Glacier Addition
  - 1.3 Back Cntry NonMotorized
  - 1.5A Clarks Fork Wild River
  - 1.6A High Lakes WSA
  - 1.6B Dunoir SMU
  - 2.2A Line Creek RNA
- 2.3 Proposed RNA
  - 3.1A Swamp Lake SIA
  - 3.1B Prpsd Little Popo Agie SIA
  - 3.1C Prpsd Sawtooth Peatbeads SIA
  - 3.3A Back Cntry Motorized
  - 3.3B Back Cntry Winter Motorized
  - 3.3C Back Cntry Summer Motorized
  - 3.5A Back Cntry Restoration Motorized
  - 3.5B Back Cntry Restoration Win Motor
- 3.5C Back Cntry Restoration Sum Mot
  - 3.5D Back Cntry Restoration Nonmot
  - 4.2 Travel Corridor
  - 4.3 Back Cntry Access Corridor
  - 4.5A Kiwin SIA
  - 5.1 Mngd Forest & Rangelands
  - 5.2 Public Water Supply
  - 5.4 Mngd Big Game Crucial Winter Rng
  - 8.2 Ski-based Resort

Map 79 (pg 7 of 8)  
Alternative G  
management areas  
east Wind River







Legend

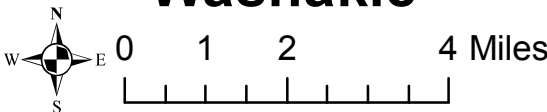
- Existing Open Road

--- Existing Motorized Trails

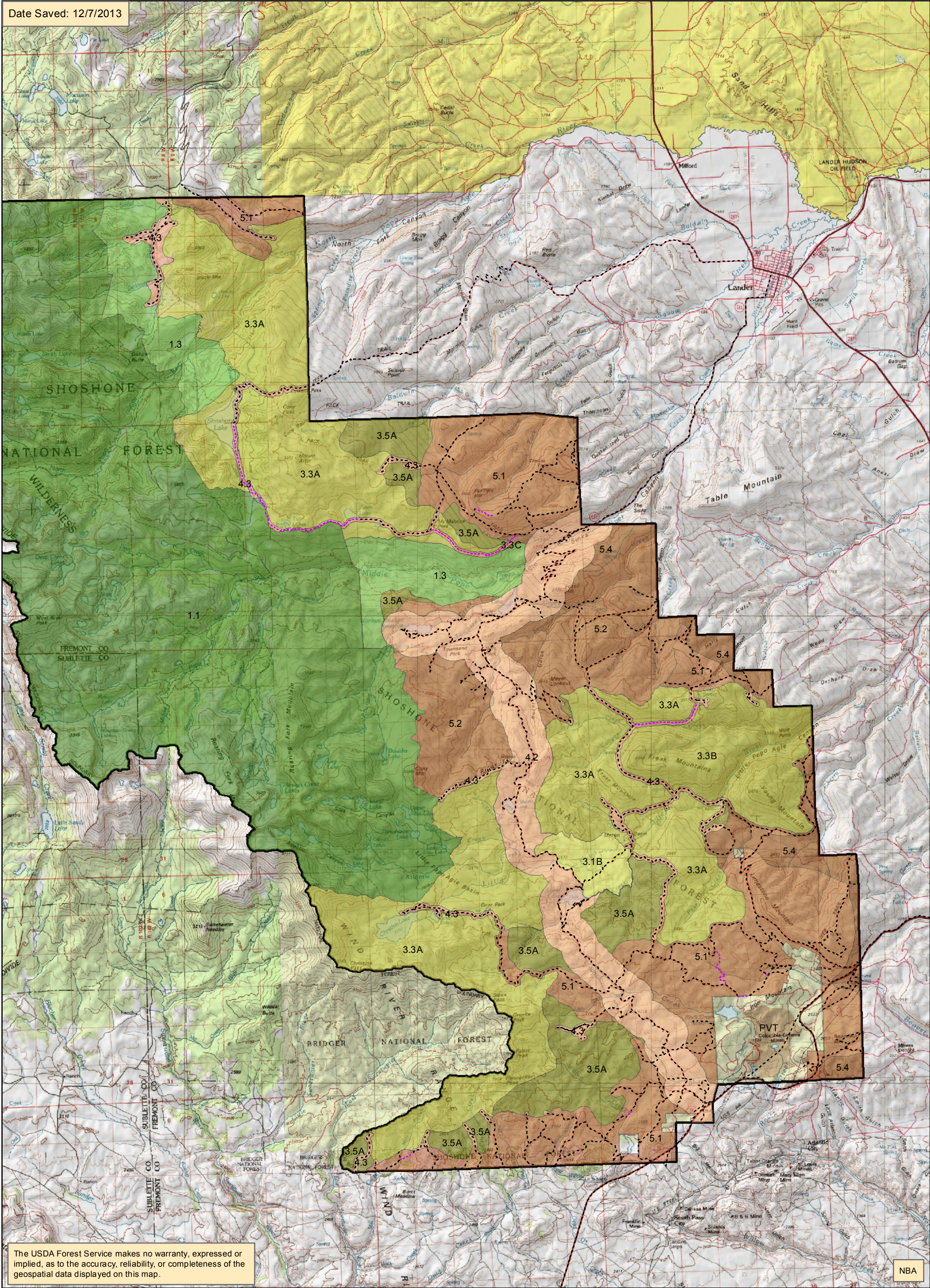
**management area**

  - 1.1 Wilderness
  - 1.1A Glacier Addition
  - 1.3 Back Cntry NonMotorized
  - 1.5A Clarks Fork Wild River
  - 1.6A High Lakes WSA
  - 1.6B Dunoir SMU
  - 2.2A Line Creek RNA
- 2.3 Proposed RNA
  - 3.1A Swamp Lake SIA
  - 3.1B Prpsd Little Popo Agie SIA
  - 3.1C Prpsd Sawtooth Peatbeads SIA
  - 3.3A Back Cntry Motorized
  - 3.3B Back Cntry Winter Motorized
  - 3.3C Back Cntry Summer Motorized
  - 3.5A Back Cntry Restoration Motorized
  - 3.5B Back Cntry Restoration Win Motor
- 3.5C Back Cntry Restoration Sum Mot
  - 3.5D Back Cntry Restoration Nonmot
  - 4.2 Travel Corridor
  - 4.3 Back Cntry Access Corridor
  - 4.5A Kiwin SIA
  - 5.1 Mngd Forest & Rangelands
  - 5.2 Public Water Supply
  - 5.4 Mngd Big Game Crucial Winter Rng
  - 8.2 Ski-based Resort

Map 79 (pg 8 of 8)  
Alternative G  
management areas  
Washakie



Date Saved: 12/7/2013



The USDA Forest Service makes no warranty, expressed or implied, as to the accuracy, reliability, or completeness of the geospatial data displayed on this map.

NBA