



# Green Mountain *National Forest*

Caring for the Land and Serving People

## Lye Brook Falls Trail

### Trail Facts:

<b>Length:</b> 4.6 miles round trip	<b>Feature:</b> Waterfall
<b>Max elevation change:</b> 740 feet	<b>USGS maps:</b> Manchester Quad
<b>Amount of use:</b> Heavy	<b>Hiking level:</b> Moderate
<b>Average hike time:</b> 3 – 4 hours round trip	

### Trail Description:

The trail, marked with blue blazes, enters the 15,680-acre Lye Brook Wilderness following along Lye Brook. Utilizing old logging railroad grades and old woods roads, the trail travels up a steady gradual slope. Downed trees from a 1995 cyclonic storm and a few small stream crossings make some of the trail challenging, which is in keeping with Wilderness management practices. A century ago, this area had been heavily logged, with railroads, charcoal kilns, and sawmills dotting the landscape. The land has reverted back to its natural state, but those wishing to explore can still find the remains of many of these turn of the century industries. The spur trail at 1.8 miles on the right, leads to the 125-foot high Lye Brook Falls, one of the highest in Vermont. Slippery rocks make the falls extremely dangerous and climbing the falls is not recommended. Please practice Leave No Trace ethics, such as carry out what you carry in. Trail blazing, maintenance, and signage will be minimal in Wilderness Areas.

### Directions:

**From Route 7 in Manchester,** travel about a ¼ mile east on Route 11/30 to East Manchester Road. Follow East Manchester Rd. south for about 1.0 miles and turn left onto Glen Road, just before the overpass. Follow Glen Rd. and bear right at the fork onto the Lye Brook Access Road. The trailhead is located to the east of the parking lot at the end of the Lye Brook Access Road.

### Nearby Destinations or Attractions:

- Manchester Ranger Station
- Prospect Rock

### Area Services:

<b>Food and Services:</b> Manchester
<b>For all Emergencies:</b> Call <b>911</b>
<b>911 Information:</b> The trailhead is in the Town of Manchester; 489 Glen Rd.



U.S. Department  
of Agriculture



Forest Service

Green Mountain & Finger Lakes National Forests

231 North Main Street, Rutland, VT 05701

(802) 747-6700 Phone

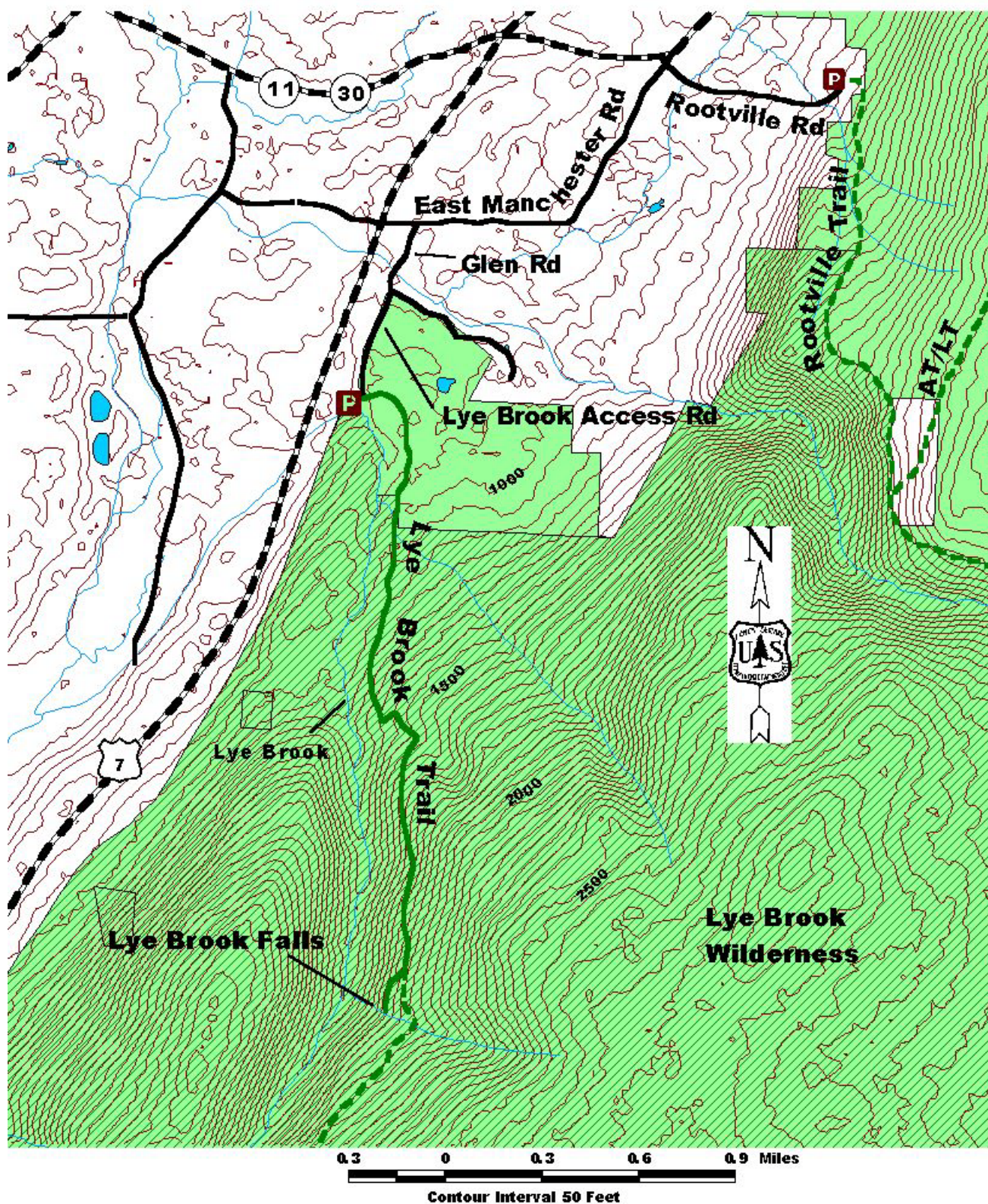
(802) 747-6766 FAX

Website: [www.fs.usda.gov/greenmountain](http://www.fs.usda.gov/greenmountain)

The USDA is an equal opportunity provider and employer.



Map:



For More Information:

Manchester Ranger District, 2538 Depot St. (Rte 11/30), Manchester Center, VT 05255, (802) 362-2307

This Recreation Guide is Available in Large Print at Forest Service Information Centers

Last modified 7/5/2011