

# Visibility Data Summary: Petersburg, AK



United States  
Department  
of Agriculture  
  
Forest Service  
Air Program

Contact: John Lane (907) 586-8978

Date: June 2013

## Introduction

Air pollution often has a subtle but critical impact on ecosystems and vistas, and can alter ecosystems by harming plants and animals, or changing soil or water chemistry. As a result, ecosystems then become more vulnerable to damage from insects and diseases, drought, or invasive species. Additionally, since many visitors to national forests value pristine areas with magnificent vistas, air pollution can spoil their experience and lessen their enjoyment of national forests.

## Background

One of the most noticeable forms of air pollution is haze, a veil of smog-like pollution that can blur the view of many urban and rural areas. As part of the Clean Air Act, Congress has established a goal to prevent future and remedy existing visibility impairment in 156 protected national parks and wildernesses, known as Class I Areas. Federal rules require state and federal agencies to work together to improve visibility in these areas so that natural background conditions are achieved by the year 2064.

## IMPROVE Monitoring Network

The IMPROVE (Interagency Monitoring of Protected Visual Environments) monitoring network collects aerosol samples at monitors throughout the country, which are then analyzed to obtain a complete chemical profile of the airborne particles that are affecting visibility in the area. The data are used to establish baseline visibility conditions and track changes over time, helping scientists understand the causes of haze.

## About This Location

Petersburg is located near the Tongass National Forest in Alaska, as shown in Figure 1.

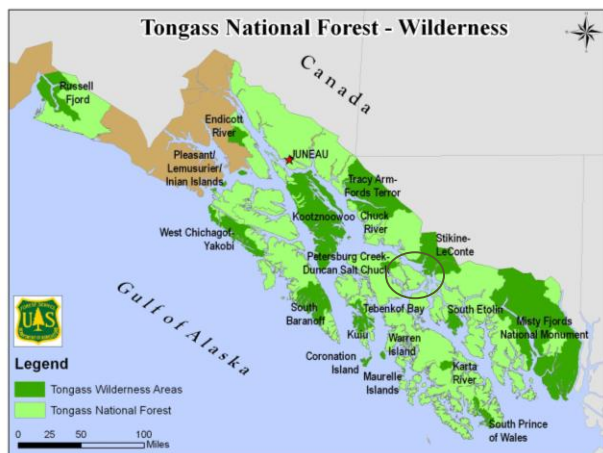


Figure 1: Location of Tongass Wilderness Area

An IMPROVE monitor was established in Petersburg in 2004 to assess visibility impairment in the area. An analysis of the monitoring data indicates that sulfates are the largest contributor to visibility impairment, as shown in Figure 2 in units of light extinction.

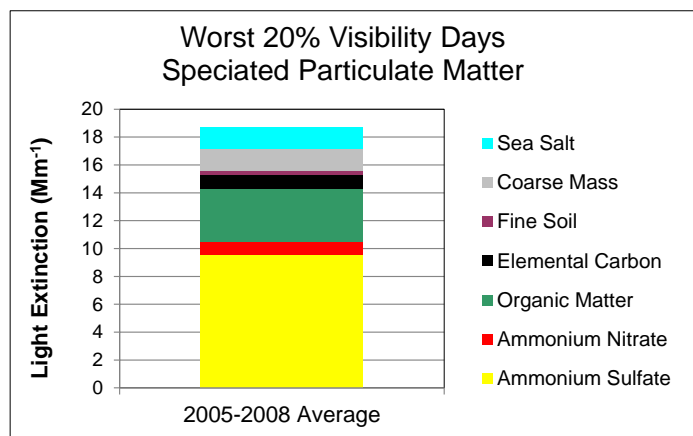


Figure 2: Composition of Particulate Matter on Hazy Days at Petersburg

## What Pollutants Are Reducing Visibility?

Regional haze comes from a variety of anthropogenic (man-made) and natural sources. Typical visibility-impairing pollutants such as sulfates, nitrates, and organic carbon are identified in the IMPROVE data and can help pinpoint nearby sources that are contributing to regional haze at a particular location.

Table 1 shows the most common pollutants and their sources.

Table 1: Sources of Regional Haze Pollutants

Pollutant	Anthropogenic Sources	Natural Sources
Sulfates	Coal-Fired Power Plants, Diesel Engines, Industrial Boilers	Volcanoes
Organic Carbon	Incineration, Household Heating	Fire, Vegetation
Nitrates	Cars & Trucks, Off-Road Vehicles, Industrial Boilers, Agriculture	Soils, Lightning, Fire
Fine Soil	Off-Road Vehicles, Agriculture	Wind-Blown Dust
Elemental Carbon	Soot, Diesel Engines	Fire
Fine Particulate Matter	Combustion Processes, Roads	Fire
Coarse Particulate Matter	Construction, Roads, Woodstoves, Fireplaces	Wind-Blown Dust, Fire

### What Is Being Done to Improve Visibility?

Federal and state agencies analyze IMPROVE monitoring data, like Figure 3, to identify the pollutants that impair visibility in each Class I Area. Nearby sources of these pollutants are then scrutinized to determine if emissions can be further reduced, usually through the application of pollution control technology.

The primary contributor to visibility impairment on the worst days for this site is organic matter, which is often due to fire sources that are difficult to predict or control, but regulatory efforts can still have a positive impact on visibility. The state is required to develop a plan (SIP, or State Implementation Plan) to improve visibility at Class I Areas, and the Forest Service provides input to this process. An example of regulatory action in the state's SIP includes the application of Best Available Retrofit Technology (BART) to large emissions sources, which should result in reduced visibility impairment due to sulfates and nitrates.

### Is Visibility Improving at This Location?

Visibility is quantified using either standard visual range (SVR) or deciviews. SVR is the farthest distance one can see a dark object against a light background as measured in kilometers or miles; higher values are better. Conversely, each change in deciview is roughly equivalent to a just noticeable change in visibility; higher deciview values indicate hazier conditions while lower values are clearer. The Regional Haze Rule established a uniform rate of progress, also called a glide slope, for each Class I Area to measure if enough progress is being made to meet natural background conditions. For ease of understanding, visibility improvements in terms of SVR are given here.

Figure 3 shows the change in SVR on the worst visibility days.

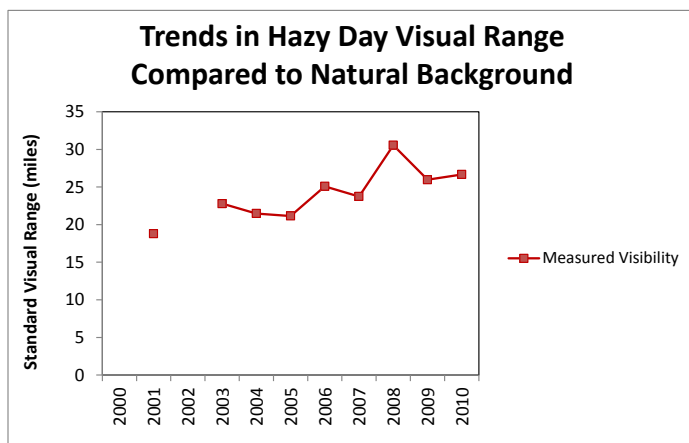


Figure 3: Changes in Visibility at Petersburg

SVR at the Petersburg IMPROVE site has been monitored over the past 6 years. Many emission reductions that are required as part of the Regional Haze SIP process for Class I Areas in Alaska will occur over the next several years, so significant improvements in visibility at Petersburg site should be seen in the next decade.

### For More Information

Malm, W. (1999). *Introduction to Visibility*. Retrieved from <http://www.epa.gov/visibility/pdfs/introvis.pdf>

Moore, T. and S. Copeland (2011). *RHR Progress Tracking Metrics*. Retrieved from <http://vista.cira.colostate.edu/improve/Publications/Reports/2011/PDF/Chapter9.pdf>

IMPROVE Website <http://vista.cira.colostate.edu/improve/Default.htm>