
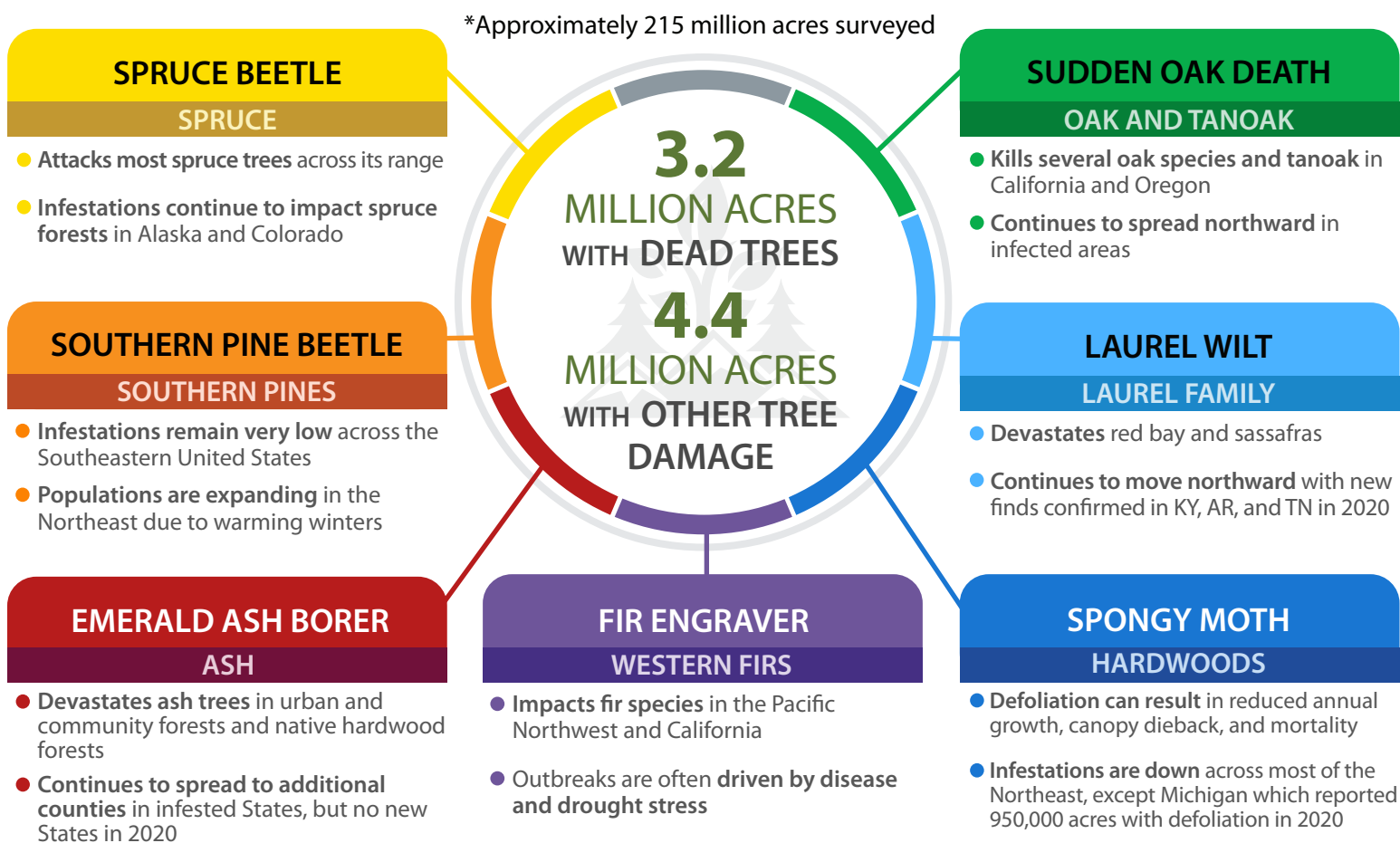




## FOREST HEALTH PROTECTION 2020 HIGHLIGHTS OF TREE MORTALITY AND OTHER DAMAGE FROM INSECTS AND DISEASES

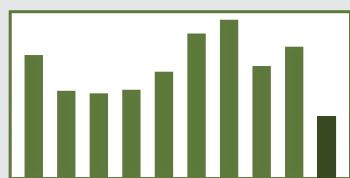
 \*Insect and disease surveys for 2020 were impacted by the COVID-19 pandemic, and some regions and States were unable to conduct typical surveys. Therefore, other remote sensing products and additional ground surveys were used to supplement data gathered by aerial surveys. Overall, there was a 50-percent reduction in acres surveyed this year with only 215 M acres in 2020, down from 500 M acres surveyed in 2019.



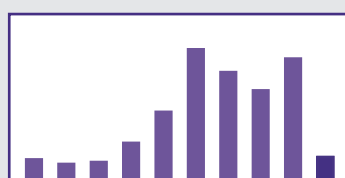
### ACTIVITIES FOREST HEALTH PROTECTION SUPPORTED

SPRUCE BEETLE	SOUTHERN PINE BEETLE	EMERALD ASH BORER	FIR ENGRAVER	SPONGY MOTH	LAUREL WILT	SUDDEN OAK DEATH
Pest suppression, detection, management, and treatments	Suppression of active infestations and thinning forest for prevention	Provided technical assistance and outreach	Surveying, suppression, and developing management options	Eradication, suppression, and Slow the Spread Program	Expanded survey work with the focus on the northernmost occurrences	Stream detection and treatments in targeted areas

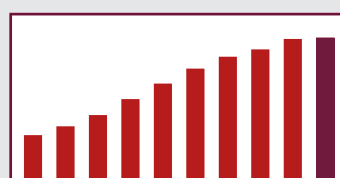
### TREE MORTALITY SURVEY TRENDS 2011-2020\*



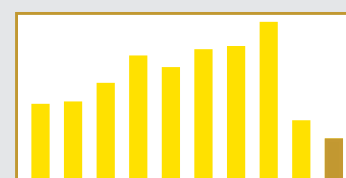
ALL TREE MORTALITY  
3.2 MILLION ACRES  
IN 2020



FIR ENGRAVER  
370,000 ACRES  
IN 2020



EMERALD ASH BORER  
1,124 COUNTIES IMPACTED  
IN 2020



SPRUCE BEETLE  
209,000 ACRES  
IN 2020

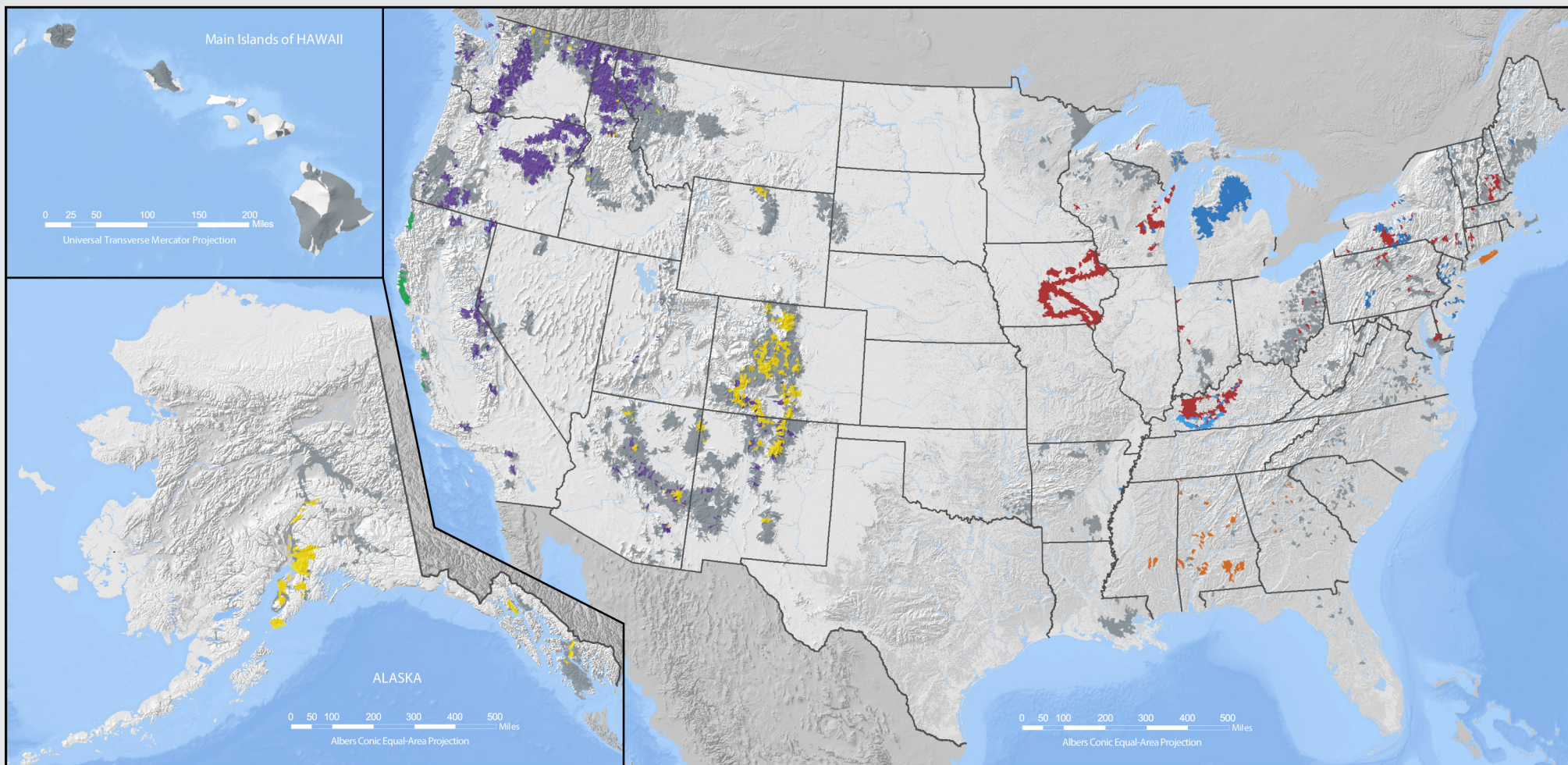


Forest Service  
U.S. DEPARTMENT OF AGRICULTURE

## 2020 INSECT AND DISEASE SURVEY WATERSHEDS WITH TREE DAMAGE



\*Insect and disease surveys for 2020 were impacted by COVID-19 and some regions and states were unable to conduct typical surveys. Remote sensing and additional ground survey supplemented data gathered by aerial survey. Overall there was a marked reduction in surveyed acres over known pest ranges such as laurel wilt.



Spruce beetle

Southern pine beetle

Emerald ash borer

Fir engraver

Spongy moth

Laurel wilt

Sudden oak death

\*\* Other damage

\*\*Includes damage from spruce budworm, forest tent caterpillar, baldcypress leafroller, browntail moth, hemlock sawfly, Douglas-fir beetle and many other less significant pests.

USDA is an equal opportunity provider, employer, and lender.