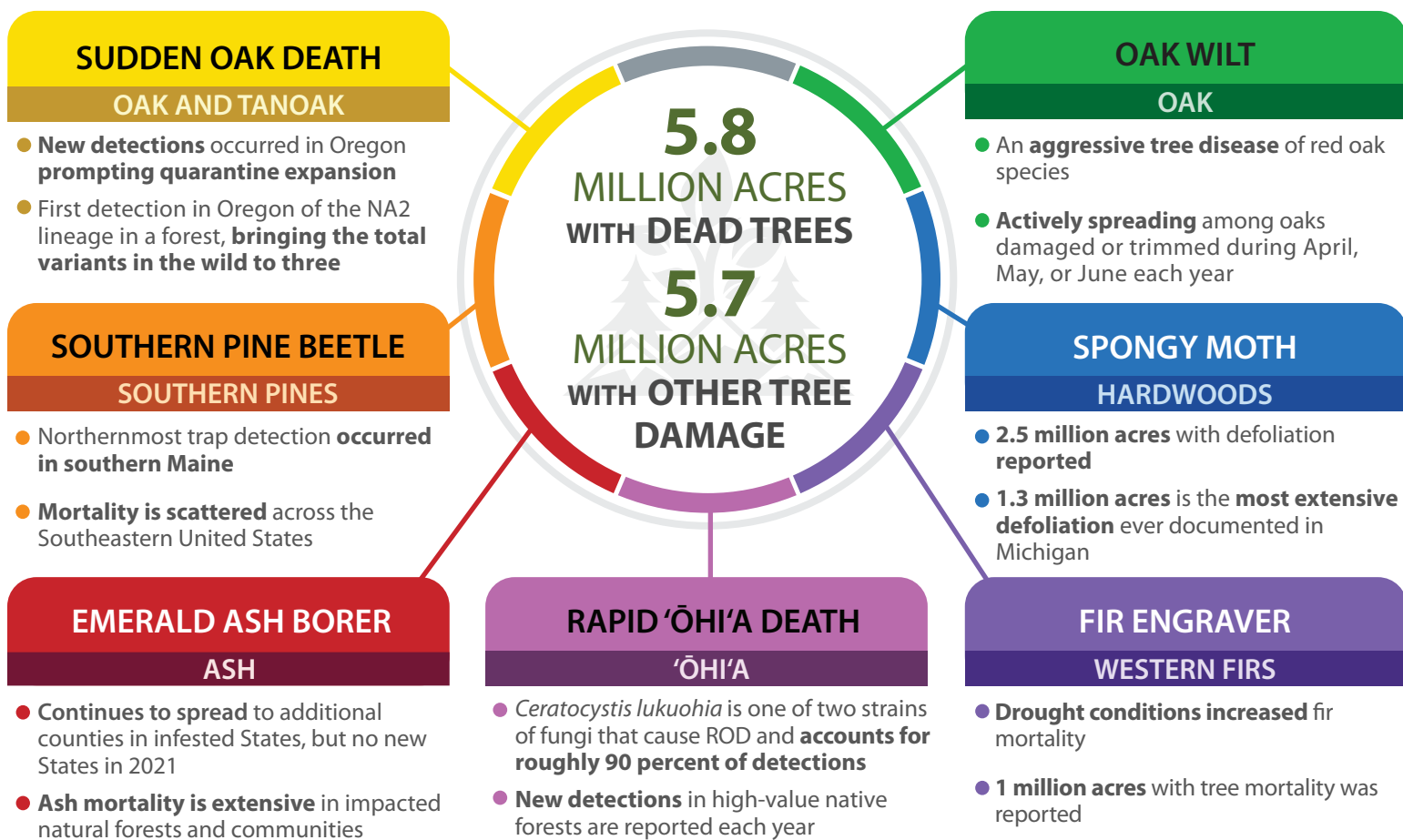


FOREST HEALTH PROTECTION

2021 HIGHLIGHTS OF TREE MORTALITY AND OTHER DAMAGE FROM INSECTS AND DISEASES

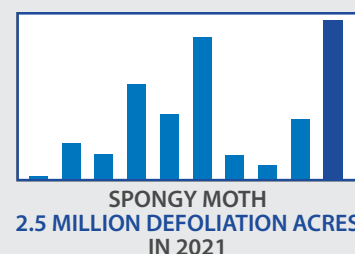
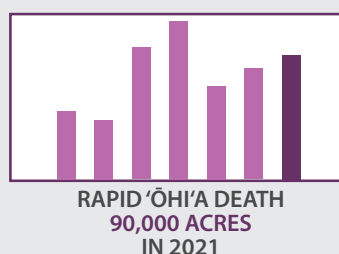
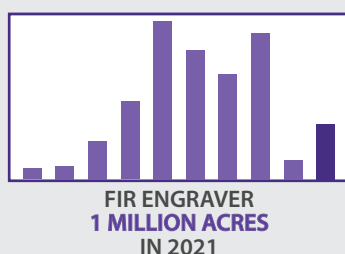
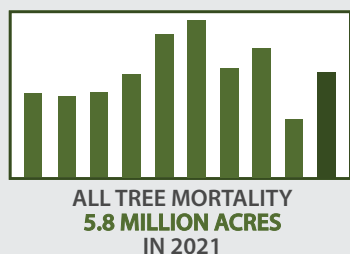
423 million acres surveyed



ACTIVITIES SUPPORTED BY FOREST HEALTH PROTECTION

SUDDEN OAK DEATH	SOUTHERN PINE BEETLE	EMERALD ASH BORER	RAPID 'ŌHI'A DEATH	FIR ENGRAVER	SPONGY MOTH	OAK WILT
Detection survey, targeted treatments, and containment	Suppression of active infestations and thinning forests for prevention	Providing technical assistance and outreach	Detection survey, rapid response, sanitation, and resistance screening	Surveying, suppression, and developing management options	Eradication, suppression, and Slow the Spread Program	Detection, suppression, and developing management options

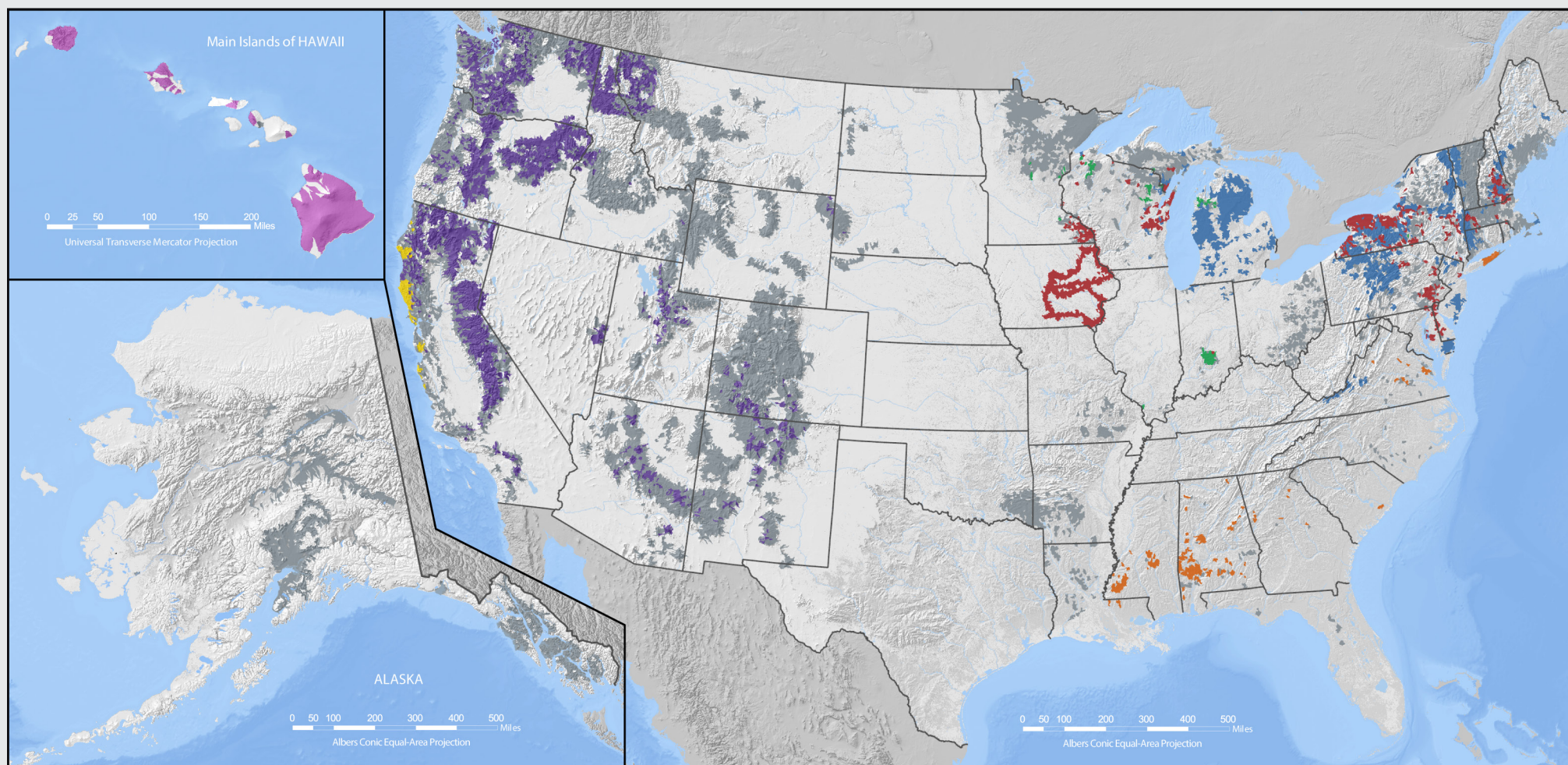
TREE MORTALITY AND DEFOLIATION SURVEY TRENDS 2012–2021





Forest Service
U.S. DEPARTMENT OF AGRICULTURE

2021 INSECT AND DISEASE SURVEY WATERSHEDS WITH TREE DAMAGE



Sudden oak death

Southern pine beetle

Emerald ash borer

Rapid 'ōhi'a death

Fir engraver

Spongy moth

Oak wilt

*Other damage

*Includes damage from spruce budworm, western blackheaded budworm, spruce beetle and other western bark beetles, eastern larch beetle, hemlock sawfly, browntail moth, beech leaf disease, and many other less significant pests.

USDA is an equal opportunity provider, employer, and lender.