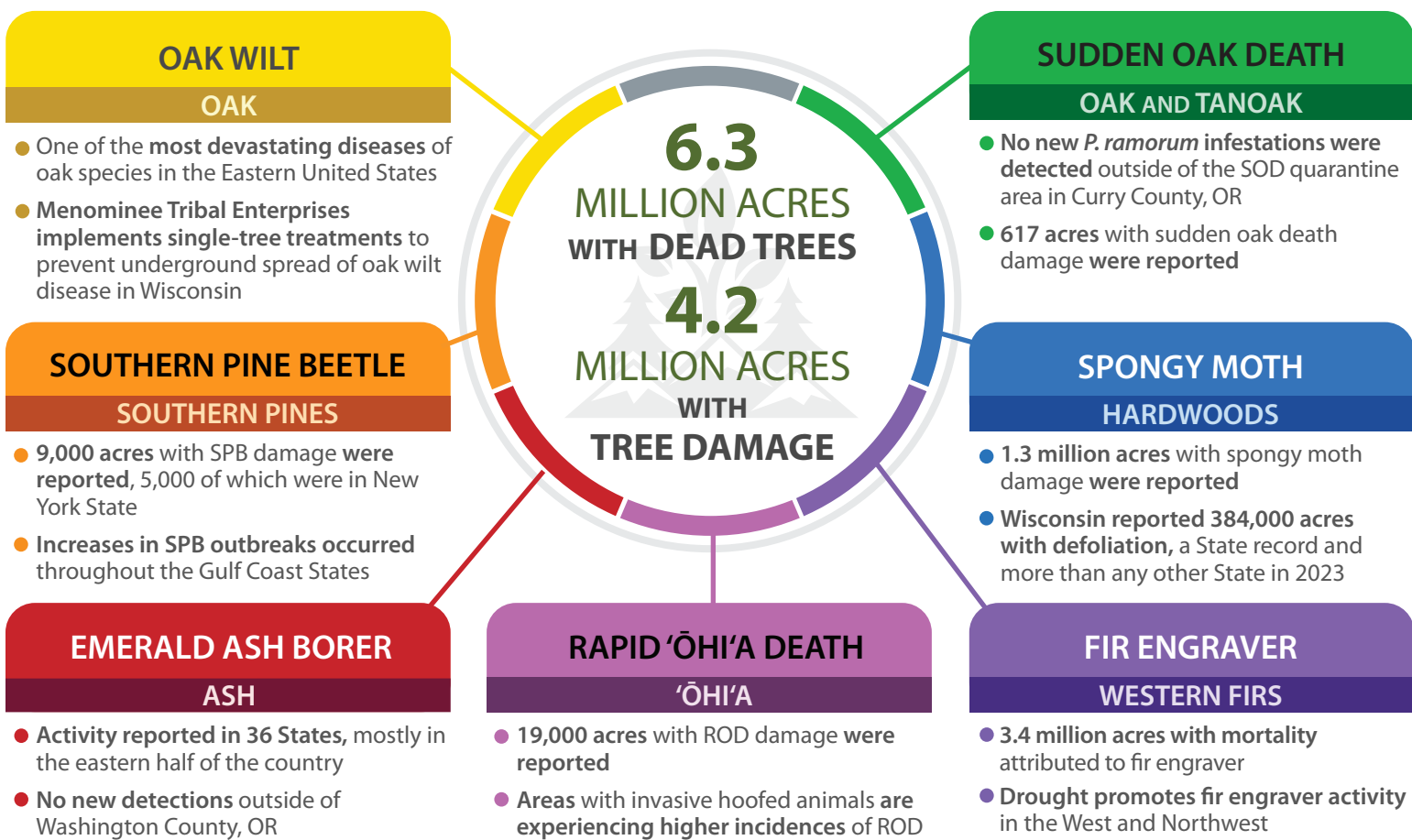




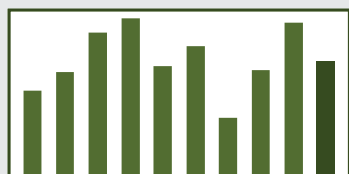
FOREST HEALTH PROTECTION 2023 HIGHLIGHTS OF TREE MORTALITY AND DAMAGE FROM INSECTS AND DISEASES 473 million acres surveyed



ACTIVITIES SUPPORTED BY FOREST HEALTH PROTECTION

OAK WILT	SOUTHERN PINE BEETLE	EMERALD ASH BORER	RAPID 'ŌHI'A DEATH	FIR ENGRAVER	SPONGY MOTH	SUDDEN OAK DEATH
Detection, suppression, and developing management options	Treating active infestations and thinning forests for prevention	Providing treatments, technical assistance, community response planning, and outreach	Detection survey, rapid response, sanitation, and resistance screening	Surveying, suppression, and developing new management options	Eradication, suppression, and Slow the Spread Program	Stream detection and treatments in targeted areas to slow the spread

TREE MORTALITY AND DEFOLIATION SURVEY TRENDS 2014–2023



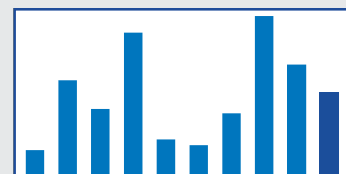
ALL TREE MORTALITY
6.3 MILLION ACRES
IN 2023



FIR ENGRAVER
3.4 MILLION ACRES
IN 2023



RAPID 'ŌHI'A DEATH
19,000 ACRES
IN 2023

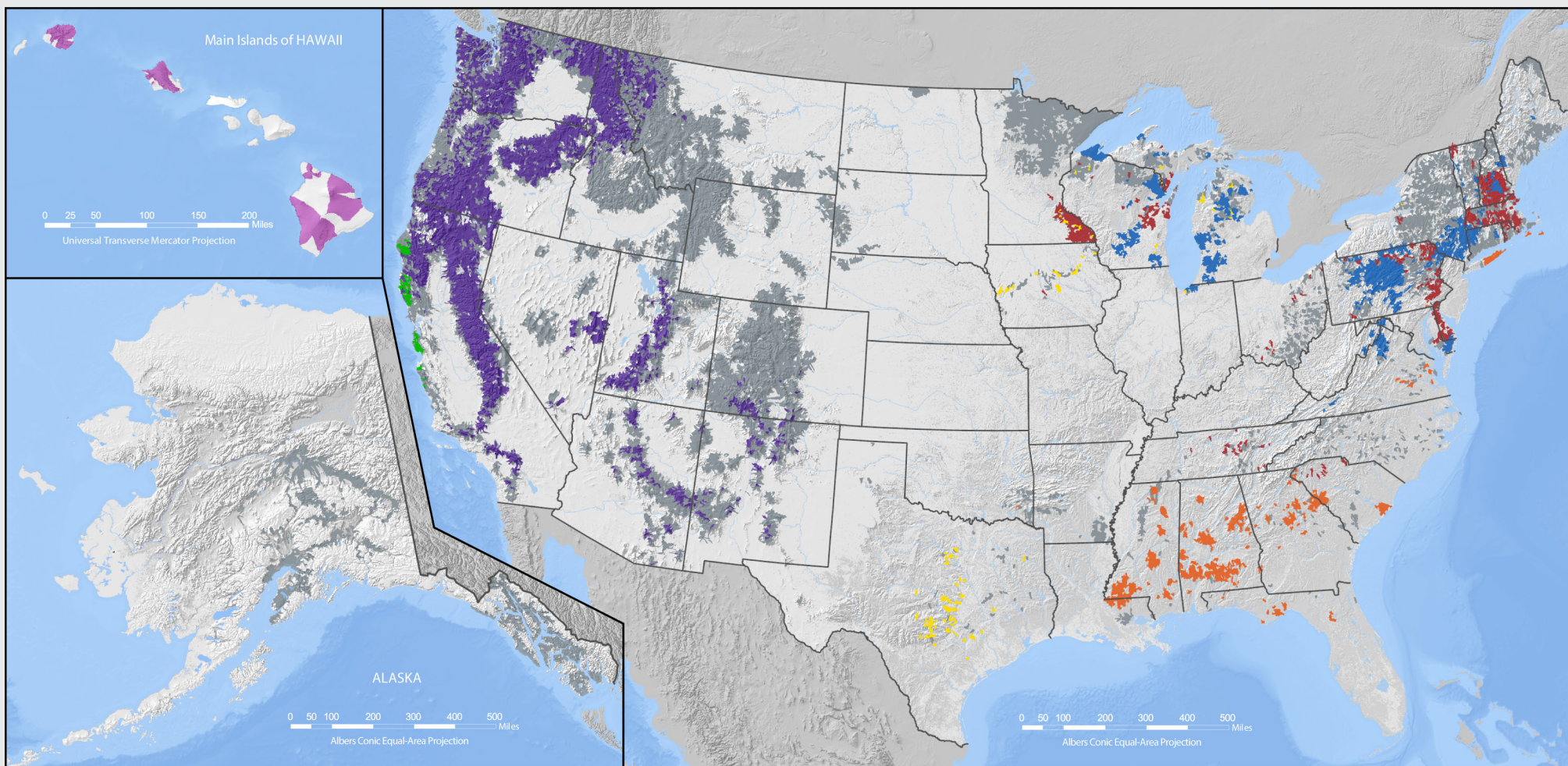


SPONGY MOTH
1.3 MILLION ACRES
IN 2023



Forest Service
U.S. DEPARTMENT OF AGRICULTURE

2023 INSECT AND DISEASE SURVEY WATERSHEDS WITH TREE DAMAGE



Oak wilt

Southern pine beetle

Emerald ash borer

Rapid 'ōhi'a death

Fir engraver

Spongy moth

Sudden oak death

*Other damage

*Includes damage from spruce budworm, western spruce budworm, western blackheaded budworm, spruce beetle and other western bark beetles, eastern larch beetle, browntail moth, forest tent caterpillar, and many other less significant pests.

USDA is an equal opportunity provider, employer, and lender.