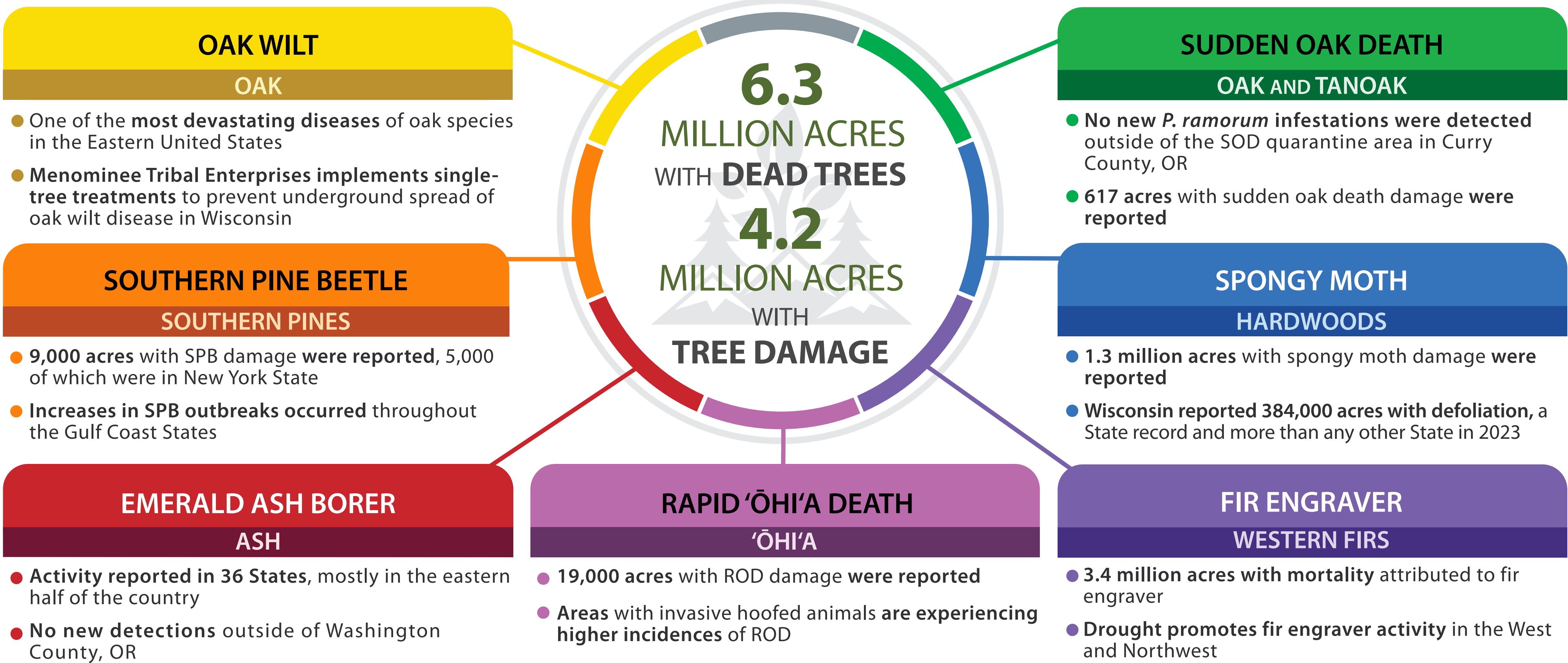


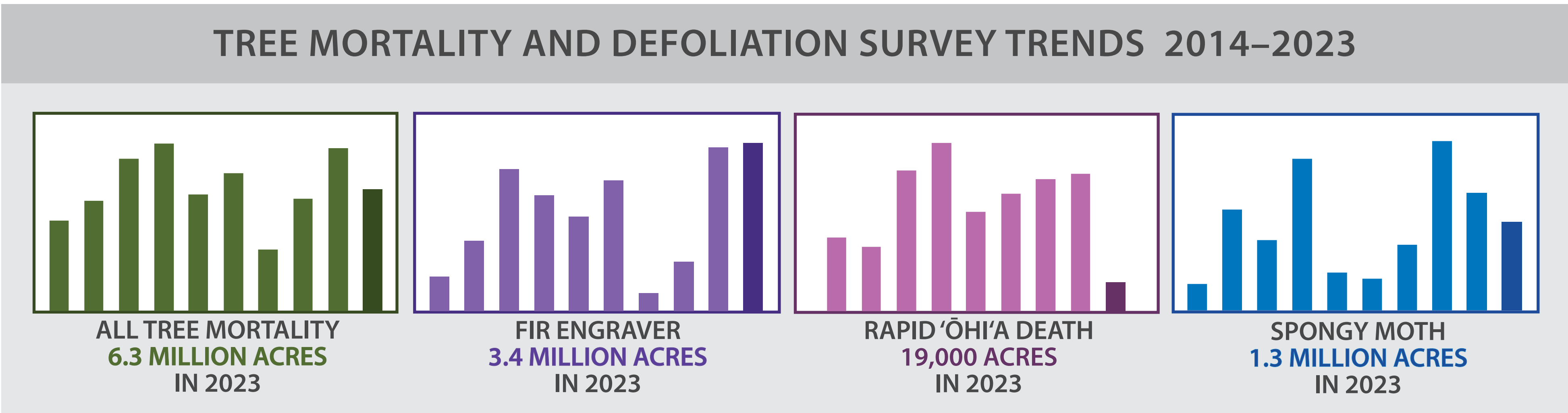
FOREST HEALTH PROTECTION

2023 HIGHLIGHTS OF TREE MORTALITY AND DAMAGE FROM INSECTS AND DISEASES

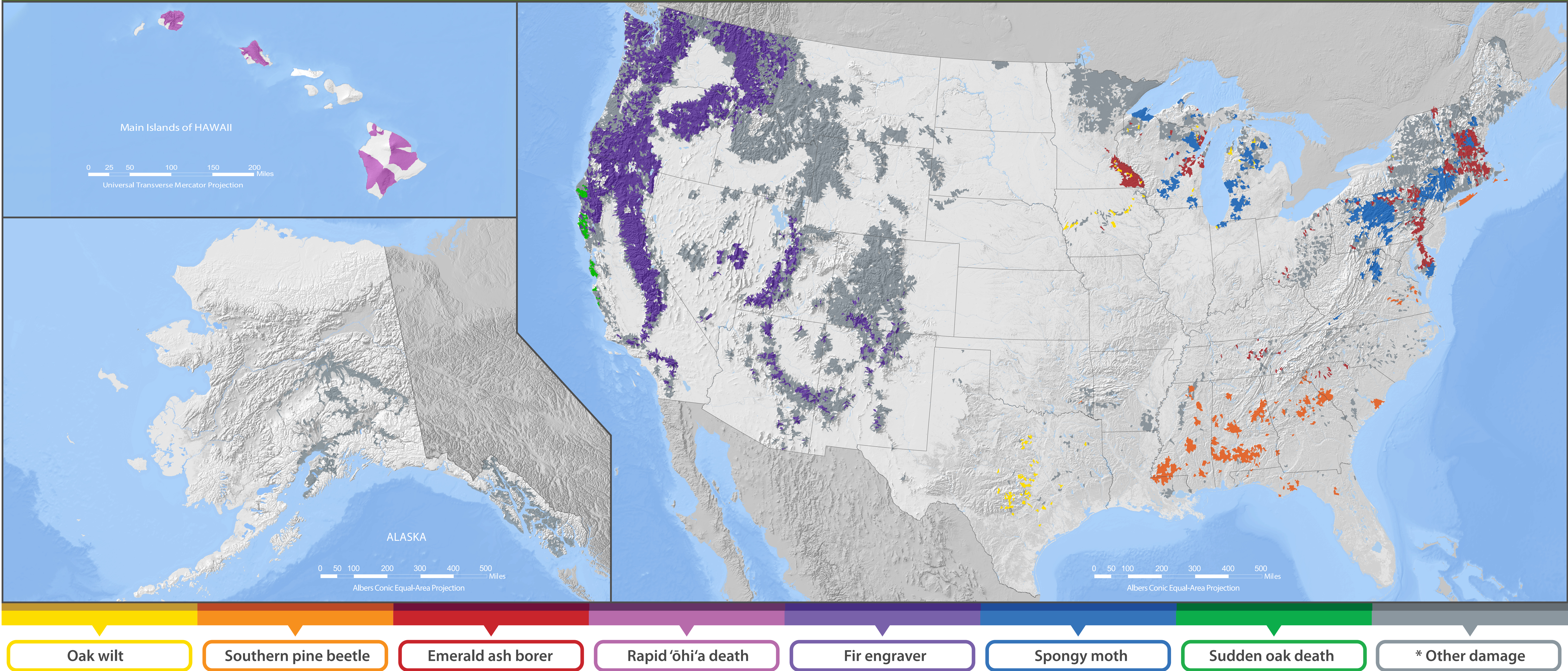
473 million acres surveyed



ACTIVITIES SUPPORTED BY FOREST HEALTH PROTECTION						
OAK WILT	SOUTHERN PINE BEETLE	EMERALD ASH BORER	RAPID 'ŌHI'A DEATH	FIR ENGRAVER	SPONGY MOTH	SUDDEN OAK DEATH
Detection, suppression, and developing management options	Treating active infestations and thinning forests for prevention	Providing treatments, technical assistance, community response planning, and outreach	Detection survey, rapid response, sanitation, and resistance screening	Surveying, suppression, and developing new management options	Eradication, suppression, and Slow the Spread Program	Stream detection and treatments in targeted areas to slow the spread



2023 INSECT AND DISEASE SURVEY – WATERSHEDS WITH TREE DAMAGE



*Includes damage from spruce budworm, western spruce budworm, western blackheaded budworm, spruce beetle and other western bark beetles, eastern larch beetle, browntail moth, forest tent caterpillar, and many other less significant pests.