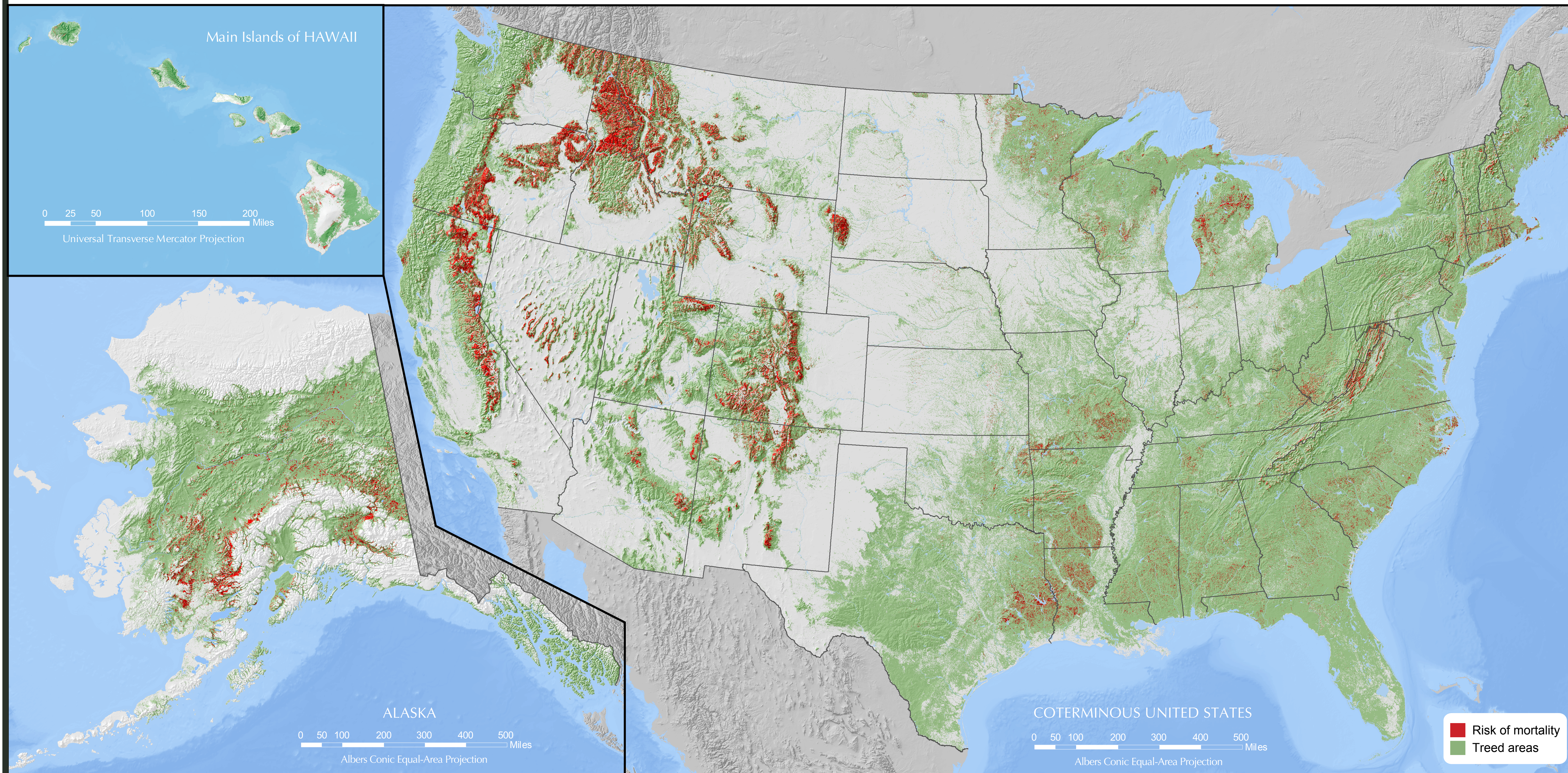




FOREST HEALTH PROTECTION

2013-2027 National Insect and Disease Composite Risk* Map

Acres in Hazardous Condition: Approximately 81.3 million



*Risk, or more appropriately termed hazard, is defined as: the expectation that, without remediation, at least 25% of standing live basal area greater than one inch in diameter will die over a 15-year time frame (2013 to 2027) due to insects and diseases.

March 2014