






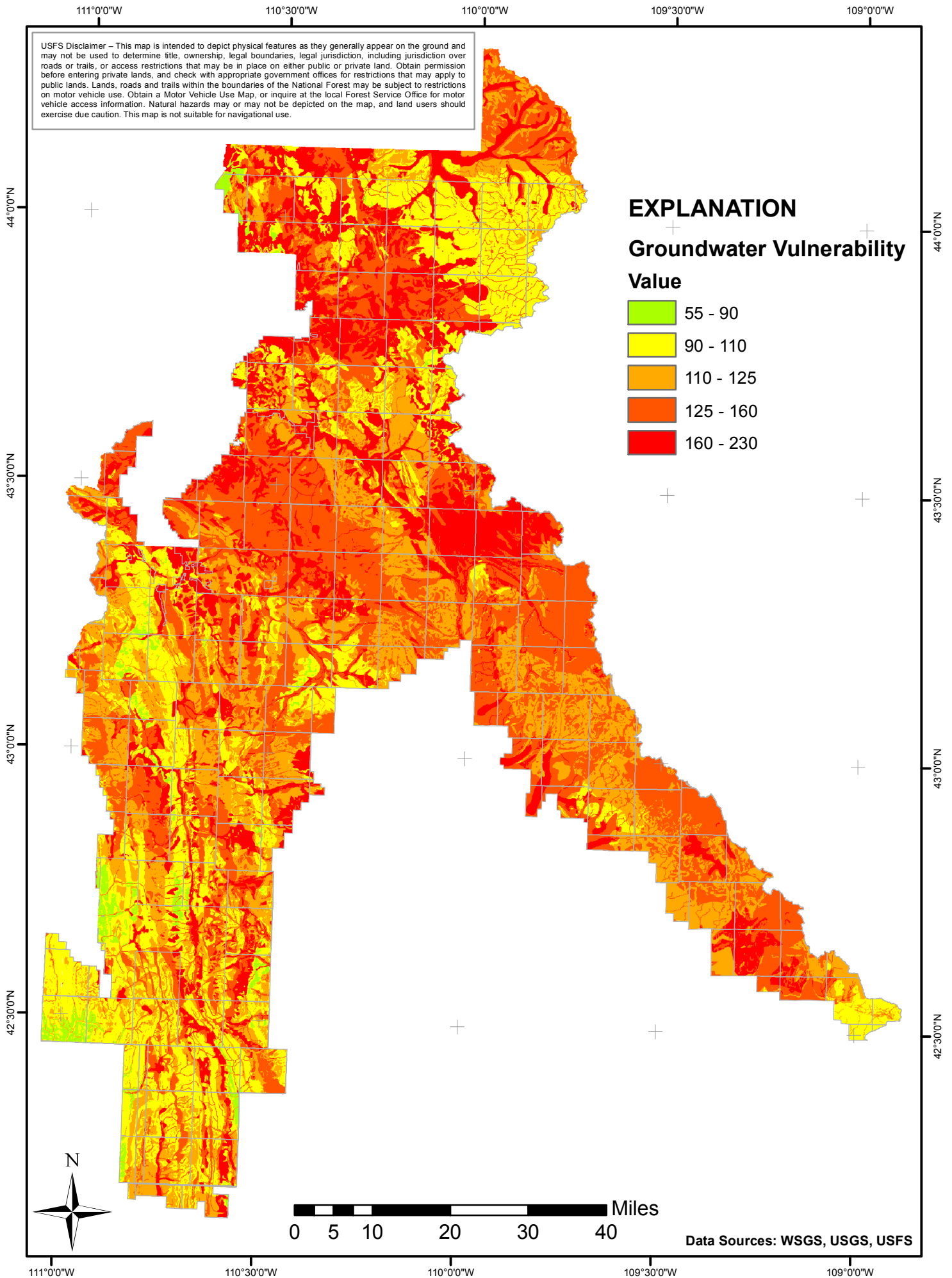
USFS Disclaimer – This map is intended to depict physical features as they generally appear on the ground and may not be used to determine title, ownership, legal boundaries, legal jurisdiction, including jurisdiction over roads or trails, or access restrictions that may be in place on either public or private land. Obtain permission before entering private lands, and check with appropriate government offices for restrictions that may apply to public lands. Lands, roads and trails within the boundaries of the National Forest may be subject to restrictions on motor vehicle use. Obtain a Motor Vehicle Use Map, or inquire at the local Forest Service Office for motor vehicle access information. Natural hazards may or may not be depicted on the map, and land users should exercise due caution. This map is not suitable for navigational use.

EXPLANATION

Groundwater Vulnerability

Value

	55 - 90
	90 - 110
	110 - 125
	125 - 160
	160 - 230



Data Sources: WSGS, USGS, USFS