

Annual Operating Instructions 2024

These Annual Operating Instructions (AOI) are made part of your grazing permit consistent with Part 1, item 3 and Part 2, Item 8 (a) of your Term Grazing Permit for the Blucher Creek Allotment and are considered an extension of your term grazing permit.

I. Authorized Use for 2024:

Allotment	Permittee	Authorized Number of Livestock	Season of Use
Blucher Creek	White Acorn Ranch	0	Planned Rest

Range improvements must still be maintained on years with planned allotment rest occurs.

Any plans to reconstruct or build new improvements on the National Forest must first be coordinated with the Rangeland Management Specialist. Improvements and associated maintenance specifications are listed in your grazing permit. No ground disturbing activities should be conducted on the National Forest by the permittee or their personnel without approval from the Rangeland Management Specialist or other District staff.

Situations may develop during the grazing season which require changes to these instructions. If this becomes necessary, or if it appears you cannot comply with some part of these instructions, please call Jess Artz in Pinedale at 307-367-5754 and obtain approval from the District Ranger before initiating changes or deviating from these instructions.

/S/ Gary Hayward

Gary Hayward
Acting Pinedale District Ranger

6/11/24

Date

Permittee or Authorized Agent Date



Annual Operating Instructions

2024

These Annual Operating Instructions (AOI) are made part of your grazing permit consistent with Part 1, item 3 and Part 2, Item 8(a) of your Term Grazing Permit for the Boulder Unit (Burnt Lake) and are considered an extension of your term grazing permit.

I. Authorized Use for 2024

Permittee	Allotment	No. and Class	Permit Type	Non-Use	Season of Use
James Jensen	Boulder Unit (Burnt Lake)	100 C/c, 5 B	Term	0	07/01-09/15

As discussed during our Spring meeting, here is how you agree to operate this season. As always, frequent and clear communication throughout the grazing season is imperative. Your main Forest Service contact person will be Jess Artz at 367-5754 if you/we need to make any significant changes.

II. General Requirements

The move-on date is only a guide since the on-date will be when range readiness occurs. Move dates are dependent on precipitation and temperature and their effects on vegetation production.

Permittee will ensure that all personnel performing on the ground livestock management are thoroughly familiar with the terms of these annual operating instructions and the term grazing permit. Distribute cattle over the entire pasture being used. Make a concerted effort to use all grazable areas. Cattle will be moved off the allotment when forage use in riparian and/or upland areas is at grazing standards. If cattle are allowed to concentrate in riparian areas and/or water developments without being pushed to unused areas, the grazing capacity of the allotment is diminished. Use of riparian areas need to be carefully monitored. The range personnel will monitor forage use in areas where cattle concentrate.

Permittee is authorized to complete the two tire tank installations in order to better distribute cattle off of the lake shore and across the allotment. Tires have been provided by the Forest Service and the remaining will be completed by the permittee. Additionally, trailer mounted solar panels are approved for use on the allotment and shall be removed at the end of the grazing season.

Place salt in areas where past and or present forage use is light. Salt should be used to spread utilization across the pasture being grazed. Place salt at least a ¼ mile from riparian areas and at least 200 yards from system trails. Salt should be picked up and moved when an area has been sufficiently used. Contact the Rangeland Management Specialist if you need suggestions. The permittee is responsible for using water and salt to achieve the best distribution of cattle throughout the pasture.

The Boulder Unit is within the mandatory food storage area. All food, pet food, processed livestock feed and grain, and refuse must be made unavailable to bears. Any carcass or animals remains will be moved at least 100 yards from live water, trails and roads. Animal carcasses in highly visible areas need to be relocated to more remote areas.



Part III of your Term Grazing Permit summarizes your maintenance obligations. **All range improvements must be maintained prior to 07/01.** Improvements must also be maintained in years of total nonuse and total rest. Any plans to reconstruct or build new improvements on the National Forest must first be coordinated with the Rangeland Management Specialist. No ground disturbing activities should be conducted on the Forest by the permittee or their personnel without approval from the Rangeland Management Specialist or other District staff.

Grazing fees must be paid before livestock can enter the National Forest. Cattle move-on counts may be conducted on randomly selected allotments this year. Brands will be checked periodically throughout the grazing season.

Range inspections may occur several times during the grazing season to check maintenance of range improvements, forage utilization, and compliance with the grazing rotation and standard requirements. You may be invited and are encouraged to participate in inspections and monitoring conducted on the allotment.

III. Use Standards

Allowable Use for Boulder Unit (Burnt Lake) Allotment– Allowable use on the Boulder Unit of the Burnt Lake Allotment shall be 50% measured on key species, by weight, at the end of the growing season for upland vegetation and 55% measured on key species, by weight, for riparian vegetation. Greenline Stubble height shall be no less than 4-inch on key areas to help meet the Livestock Grazing of Riparian Area Standard.

IV. Actual Use Reporting

Actual Use Reports will be sent out at the end of the 2024 grazing season. Please record the date and number of cattle turned onto the allotment, the dates the cattle are moved to and from the allotment and the number of cattle removed from the allotment. Accurate records of these dates will help us manage the allotment. In addition, please record labor and costs associated with maintaining the improvements on your allotment. The Forest Service uses these records to help allocate Range Betterment Funds. These funds are used to purchase materials for improvement.

Situations may develop during the grazing season which require changes to these instructions. If this becomes necessary, or if you cannot comply with some part of these instructions, contact Jess Artz. **Prior written approval from the District Ranger is required to deviate from or amend these instructions.**

If you have any questions concerning these Annual Operating Instructions, please call Jess Artz in Pinedale at 367-5754.

/S/ Gary Hayward
Gary Hayward
Acting Pinedale District Ranger

6/11/24
Date

Permittee or Authorized Agent Date

Annual Operating Instructions

2024

These Annual Operating Instructions (AOI) are made part of your grazing permit consistent with Part 1, item 3 and Part 2, Item 8(a) of your Term Grazing Permit for the Burnt Lake and Pole Creek Allotments and are considered an extension of your term grazing permit.

I. Authorized Use for 2024

Permittee	Allotment	No. and Class	Permit Type	Non-Use	Season of Use
Main Pass LLC.	Burnt Lake	378 C/c,7C,19B	Term	0	07/01-09/15
Main Pass LLC.	Pole Creek	0	Term	Planned Rest	Planned Rest

As discussed during our Spring meeting, here is how you agree to operate this season. As always, frequent and clear communication throughout the grazing season is imperative. Your main Forest Service contact person will be Jess Artz at 367-5754 if you/we need to make any significant changes.

II. Pasture Rotation Sequence

Grazing Unit	Approximate Livestock Numbers	Date Cattle Enter Unit	Date Cattle Leave Unit
Burnt Lake North	404	07/01	08/07
Burnt Lake South	404	08/08	09/15

III. General Requirements

The move-on date is only a guide since the on-date will be when range readiness occurs. Move dates are dependent on precipitation and temperature and their effects on vegetation production.

Permittee will ensure that all personnel performing on the ground livestock management are thoroughly familiar with the terms of these annual operating instructions and the term grazing permit. Distribute cattle over the entire pasture being used. Make a concerted effort to use all grazable areas in a pasture. Please realize that it is in your best interest to keep cattle distributed throughout the pasture being used. Cattle will be moved off the allotment when forage use in riparian and/or upland areas is at grazing standards. If cattle are allowed to concentrate in riparian areas and/or water developments without being pushed to unused areas, the grazing capacity of the allotment is diminished. Use of riparian areas need to be carefully monitored. The range personnel will monitor forage use in areas where cattle concentrate.

Place salt in areas where past and or present forage use is light. Salt should be used to spread utilization across the pasture being grazed. Place salt at least a ¼ mile from riparian areas and at least 200 yards from system trails. Salt should be picked up and moved when an area has been sufficiently used. Contact the Rangeland Management Specialist if you need suggestions. The permittee is responsible for using water and salt to achieve the best distribution of cattle throughout the pasture.

The Burnt Lake and Pole Creek allotments are within the mandatory food storage area. All food,



pet food, processed livestock feed and grain, and refuse must be made unavailable to bears. Any carcass or animal remains will be moved at least 100 yards from live water, trails and roads. Animal carcasses in highly visible areas need to be relocated to more remote areas.

Part III of your Term Grazing Permit summarizes your maintenance obligations. **All range improvements must be maintained prior to 07/01. Range improvements must still be maintained on allotment rest years.** Any plans to reconstruct or build new improvements on the National Forest must first be coordinated with the Rangeland Management Specialist. No ground disturbing activities should be conducted on the Forest by the permittee or their personnel without approval from the Rangeland Management Specialist or other District staff.

Grazing fees must be paid before livestock can enter the National Forest. Cattle move-on counts may be conducted on randomly selected allotments this year. Brands will be checked periodically throughout the grazing season.

Range inspections may occur several times during the grazing season to check maintenance of range improvements, forage utilization, and compliance with the grazing rotation and standard requirements. You may be invited and are encouraged to participate in inspections and monitoring conducted on the allotment.

Because of increasing public use, gates are often left open and cattle stray into the wrong pasture. I realize this is a problem and an inconvenience. However, it is still the permittee's responsibility to keep their animals in the proper unit. Routine checks need to be made by you and your rider.

IV. Use Standards

Allowable Use for Burnt Lake and Pole Creek Allotments— Allowable use on the Burnt Lake and Pole Creek Allotments shall be 50% measured on key species, by weight, at the end of the growing season for upland vegetation and 55% measured on key species, by weight, for riparian vegetation. Greenline Stubble height shall be no less than 4-inch on key areas to help meet the Livestock Grazing of Riparian Area Standard.

V. Actual Use Reporting

An Actual Use Report will be sent to you at the end of the 2024 grazing season. Please record the date and number of cattle turned onto the allotment, the dates the cattle are moved to and from each pasture on the rotation, and the number of cattle removed from the allotment. Accurate records of these dates will help us manage the allotment. In addition, please record labor and cost associated with maintaining the improvements on your allotment. The Forest Service uses these records to help allocate Range Betterment Funds. These funds are used to purchase materials for improvement.

Situations may develop during the grazing season which require changes to these instructions. If this becomes necessary, or if you cannot comply with some part of these instructions, contact Jess Artz. **Prior written approval from the District Ranger is required to deviate from or amend these instructions.**

If you have any questions concerning these Annual Operating Instructions, please call Jess Artz

in Pinedale at 367-5754.

/S/ Gary Hayward

Gary Hayward

Acting Pinedale District Ranger

6/11/24

Date

Permittee or Authorized Agent Date

Annual Operating Instructions 2024

These Annual Operating Instructions (AOI) are made part of your grazing permit consistent with Part 1, item 3 and Part 2, Item 8(a) of your Term Grazing Permit for the Blucher Creek and East Sagebrush Creek allotments and are considered an extension of your term grazing permit.

I. Authorized Use for 2024:

Permittee	Allotment	No. and Class	Permit Type	Non-Use	Season of Use
White Acorn Ranch	East Sagebrush	230 Cow/calf	Term	0	8/2-10/1

As discussed during our Spring meeting, here is how you agree to operate this season. **We are in year 3 of the rotation schedule.** As always, frequent and clear communication throughout the grazing season is imperative. Your main Forest Service contact person will be Jess Artz at 367-5754 if you/we need to make any significant changes.

II. Pasture Rotation Sequence

Grazing Unit	Livestock Numbers	Date Cattle Enter Unit	Date Cattle Leave Unit
East Sagebrush (Middle Fork)	230	08/02	08/31
East Sagebrush (East Fork)	230	09/01	09/15
East Sagebrush (Chicken Creek)	230	09/16	10/01

III. General Requirements

The move-on date is only a guide since the on-date will be when range readiness occurs. Move dates are dependent on precipitation and temperature and their effects on vegetation production.

Permittee will ensure that all personnel performing on-the-ground livestock management are thoroughly familiar with the terms of these annual operating instructions and the term grazing permit. The permittee will provide sufficient riders to get proper distribution and management of livestock on the allotments.

For the East Sagebrush Allotment, it is especially important to have all the cattle in the appropriate pasture on the dates they are planned to be grazed. Range inspections may occur several times during the grazing season to check maintenance of range improvements, forage utilization, and compliance with the grazing rotation and other standard requirements. You may be invited and are encouraged to participate in inspections and monitoring conducted on the allotment.

These allotments are within the mandatory food storage area. In general, all food, pet food, processed livestock feed and grain, and refuse must be made unavailable to bears. Any carcass or animal remains will be moved at least 100 yards from live water and roads. Animal

carcasses must be moved at least 200 yards from system trails. For specifics please refer to the Bridger-Teton National Forest Occupancy and Use Order #04-03-330 (the Order). I have provided you a copy of the Order in past years. Let me know if you would like another copy. Please contact Wyoming Game and Fish Department if you have suspected losses or other issues.

Salt is a valuable and flexible tool to distribute livestock to suitable range that otherwise would be lightly utilized. As a rule, salt should be placed where additional forage utilization is desirable. The possession or distribution of salt within wilderness areas is prohibited except for the management of livestock authorized in this permit. No more than 50 pounds of salt shall be placed in any one location at any time, with the exception of staging and transporting activities. Salt must be moved to a new location once a month or more often, when the salting location appears to be becoming beat out to prevent permanent site damage. Salt should also be placed on rock or hardened areas to prevent salt leaching into the ground. No salting is permitted within 1/4 mile of water, riparian areas, roads, Forest System trails, or dispersed camping and picnicking sites except as agreed to by the Forest Service. No salting is permitted within 1/2 mile of traditional congregating areas. When an area has been grazed to the desired utilization, salt shall be removed from the area. The distribution of salt within allotment is allowed for the management of permitted livestock.

Part III of your Term Grazing Permit summarizes your maintenance obligations. **All range improvements must be maintained prior to 08/02.** Any plans to reconstruct or build new improvements on the National Forest must first be coordinated with the Rangeland Management Specialist. No ground disturbing activities should be conducted on the Forest by the permittee or their personnel without approval from the Rangeland Management Specialist or other District staff.

Grazing fees must be paid before livestock can enter the National Forest. Cattle move-on counts may be conducted on randomly selected allotments this year. Brands will be checked periodically throughout the grazing season.

Because of increasing public use, gates are often left open and cattle stray in to the wrong pasture. I realize this is a problem and an inconvenience. However, it is still the permittee's responsibility to keep their animals in the proper unit. Routine checks need to be made by you and your rider.

IV. Use Standards

Allowable Use for East Sagebrush Creek Allotment – Allowable use on the East Sagebrush Creek Allotment shall be 50% measured on key species, by weight, at the end of the growing season for upland vegetation. 50% utilization will also apply to mesic meadows.

- **Greenline Stubble Height** – Greenline Stubble height shall be no less than 6-inch on key areas in the Middle Fork and East Fork pastures as determined by February 2022 Livestock Grazing Authorization for the Sweetwater, Blucher Creek, and East Sagebrush Creek Allotments Decision Notice & FONSI. Greenline stubble height limit for the Chicken Creek pasture will be 4 inches.

- Streambank Alteration – Streambank alteration by livestock should not exceed 20%.

V. Actual Use Reporting

An Actual Use Report will be sent to you at the end of the 2024 grazing season. Please record the date and number of cattle turned onto the allotment, the dates the cattle are moved to and from each pasture on the rotation, and the number of cattle removed from the allotment.

Accurate records of these dates will help us manage the allotment. In addition, please record labor and cost associated with maintaining the improvements on your allotment. The Forest Service uses these records to help allocate Range Betterment Funds. These funds are used to purchase materials for improvement.

Situations may develop during the grazing season which require changes to these instructions. If this becomes necessary, or if you cannot comply with some part of these instructions, contact Jess Artz. **Prior written approval from the District Ranger is required to deviate from or amend these instructions.**

If you have any questions concerning these Annual Operating Instructions, please call Jess Artz in Pinedale at 367-5754.

/S/ Gary Hayward

Gary Hayward

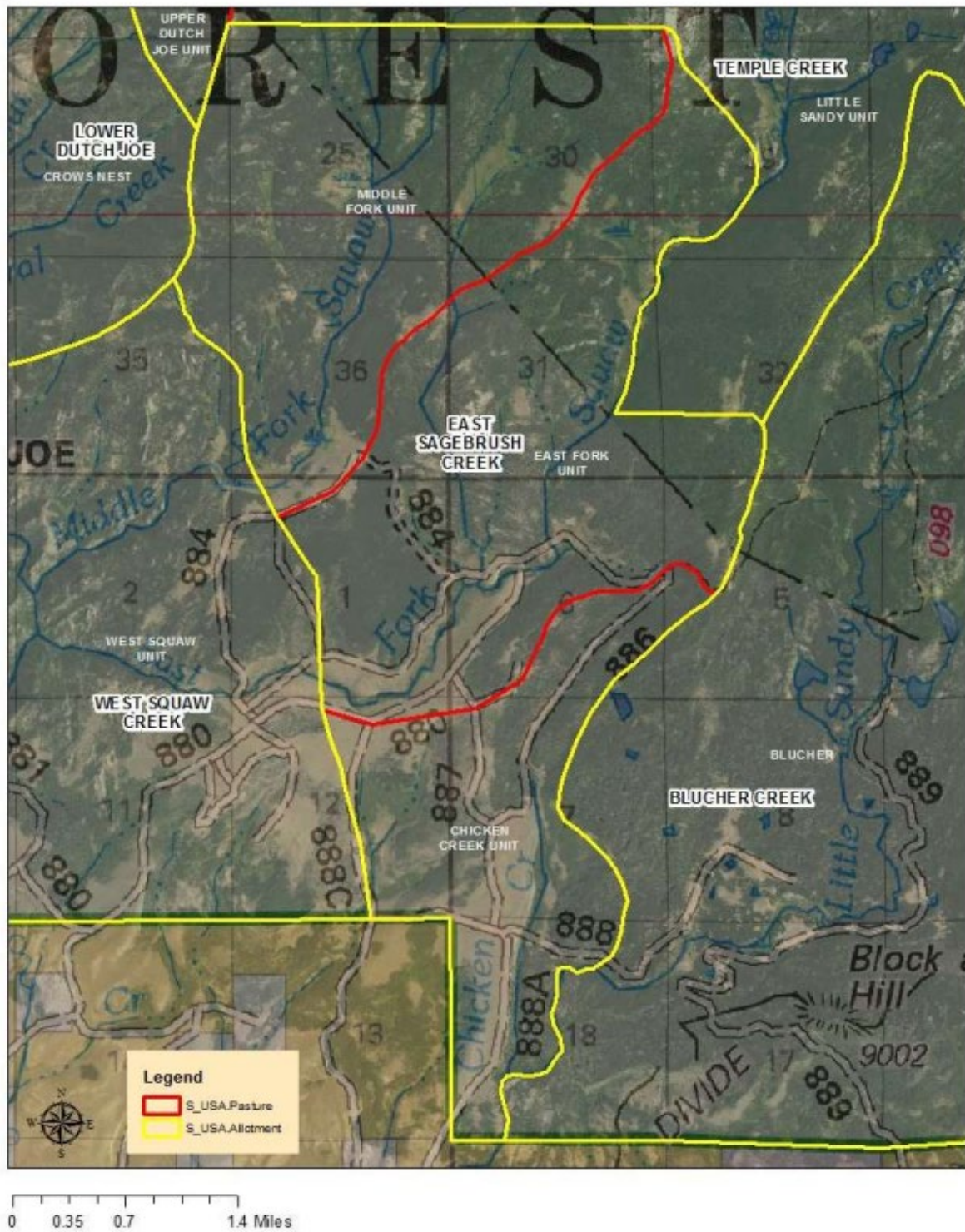
Acting Pinedale District Ranger

6/11/24

Date

Permittee or Authorized Agent Date

East Sagebrush Creek Boundaries



Annual Operating Instructions 2024

These Annual Operating Instructions (AOI) are made part of your grazing permit consistent with Part 1, item 3 and Part 2, Item 8(a) of your Term Grazing Permit for the Lamreaux Allotment and are considered an extension of your term grazing permit. As outlined in Craig Trulocks' May 1, 2006 letter to you, I expect each of your three companies to run as a unique entity.

I. Authorized Use for 2024:

Permittee	Allotment	No. and Class	Permit Type	Non-Use	Season of Use
Midland Livestock	Lamreaux Meadow	1350 sheep E/L, 6 stock	Term	0	7/15-9/10

As discussed during our Spring meeting, here is how you agree to operate this season. As always, frequent and clear communication throughout the grazing season is imperative. Your main Forest Service contact person will be Jess Artz at 367-5754 if you/we need to make any significant changes.

II. Pasture Rotation Sequence

Grazing Unit	Approximate Livestock Numbers	Date Sheep Enter Unit	Date Sheep Leave Unit
Muddy Ridge	1350 sheep E/L	07/15	08/05
Lamreaux	1350 sheep E/L	08/06	09/10

III. General Requirements

The move-on date is only a guide since the on-date will be when range readiness occurs. Move dates are dependent on precipitation and temperature and their effects on vegetation production.

Permittee will ensure that all personnel performing on-the-ground livestock management are thoroughly familiar with the terms of these annual operating instructions and the term grazing permit. The permittee will provide sufficient herders to get proper distribution and management of livestock on the allotments. It is in our best interest to keep cattle well distributed. As always, move dates are approximate and will occur based on range conditions.

All campsites will be located a minimum of 200 feet from lakes and System Trails and 100 feet from springs, streams and creeks. Livestock will not be tethered or picketed within 200 feet from lakes and System Trails and 100 feet from springs, streams and creeks. Campsites used in conjunction with livestock operations will be maintained to present a clean, neat and orderly appearance. Flammable refuse will be completely burned. All unburnable materials will be stored properly until removed to a disposal site off National Forest System lands. Burying of trash is prohibited. Temporary holding pens, corrals, or mangers used for riding stock will be removed or cleaned up when the camp is moved or relocated. Facilities authorized on a permanent basis must be kept clean at all times and cleaned up after its use period. All camps must have a serviceable axe and shovel for fire control.

These allotments are within the mandatory food storage area. In general, all food, pet food, processed livestock feed and grain, and refuse must be made unavailable to bears. Any carcass or animals remains will be moved at least 100 yards from live water and roads. Animal carcasses must be moved at least 200 yards from system trails. For specifics please refer to the Bridger-Teton National Forest Occupancy and Use Order # 04-03-330 (the Order).

All predator control will be in accordance with State and Federal Laws. The permittee and/or their

agents shall not use or place poison or devices for predator control on National Forest System Lands. Please report all known or suspected black bear, grizzly bear, wolf and mountain lion activity to the appropriate contacts.

All known or suspected black bear, grizzly bear, wolf, and mountain lion activity will be reported to the USDA-FS, WGFD, or USFWS. All predator control will be coordinated by the WGFD in accordance with State and Federal Laws. The permittee and/or their agents shall not use or place poison or devices for predator control on National Forest System Lands.

A cache/storage area is allowed in Big Sandy Openings at your usual location. The cache needs to be bear resistant and removed each fall. A camp trailer and/or sheep wagon are also permitted. A maximum of 6 horses needed for cattle management will be allowed to overnight in this area at any one time.

Salt is a valuable and flexible tool to distribute livestock to suitable range that otherwise would be lightly utilized. As a rule, salt should be placed where additional forage utilization is desirable. The possession or distribution of salt within wilderness areas is prohibited except for the management of livestock authorized in this permit. No more than 50 pounds of salt shall be placed in any one location at any time, with the exception of staging and transporting activities. Salt must be moved to a new location once a month or more often, when the salting location appears to be becoming beat out to prevent permanent site damage. Salt should also be placed on rock or hardened areas to prevent salt leaching into the ground. No salting is permitted within 1/4 mile of water, riparian areas, roads, Forest System trails, or dispersed camping and picnicking sites except as agreed to by the Forest Service. No is salting permitted within 1/2 mile of traditional congregating areas. When an area has been grazed to the desired utilization, salt shall be removed from the area. The distribution of salt within allotment is allowed for the management of permitted livestock

Part III of your Term Grazing Permit summarizes your maintenance obligations. **All range improvements must be maintained prior to 07/01.** Any plans to reconstruct or build new improvements on the National Forest must first be coordinated with the Rangeland Management Specialist. No ground disturbing activities should be conducted on the Forest by the permittee or their personnel without approval from the Rangeland Management Specialist or other District staff.

Grazing fees must be paid before livestock can enter the National Forest. Cattle move-on counts may be conducted on randomly selected allotments this year. Brands will be checked periodically throughout the grazing season.

Range inspections may occur several times during the grazing season to check maintenance of range improvements, forage utilization, and compliance with the grazing rotation and standard requirements. You may be invited and are encouraged to participate in inspections and monitoring conducted on the allotment.

Because of increasing public use, gates are often left open and cattle stray into the wrong pasture. I realize this is a problem and an inconvenience. However, it is still the permittee's responsibility to keep their animals in the proper unit. Routine checks need to be made by you and your rider. The Pinedale Ranger District has an approved Motor Vehicle Use Map (MVUM). The MVUM restricts motor vehicle use to roads which are signed on the ground with a white arrow, which signifies an open route or that are on the MVUM. Please familiarize yourself and any employees conducting activities on your allotment with the MVUM. No travel off open routes is allowed

without prior approval.

IV. Use Standards

Allowable Use for Lamreaux Meadow Allotment– Allowable use on the Lamreaux Meadow Allotment shall be 50% measured on key species, by weight, at the end of the growing season for upland vegetation and 55% measured on key species, by weight, for riparian vegetation. Greenline Stubble height shall be no less than 4-inch on key areas to help meet the Livestock Utilization Standard and Livestock Grazing of Riparian Area Standard.

V. Actual Use Reporting

An Actual Use Report will be sent to you at the end of the 2024 grazing season. Please record the date and number of sheep turned onto the allotment, the dates the sheep are moved to and from each allotment and the number of sheep removed from the allotment. Accurate records of these dates will help us manage the allotment. In addition, please record labor and cost associated with maintaining the improvements on your allotment. The Forest Service uses these records to help allocate Range Betterment Funds. These funds are used to purchase materials for improvement.

Situations may develop during the grazing season which require changes to these instructions. If this becomes necessary, or if you cannot comply with some part of these instructions, contact Jess Artz.

Prior written approval from the District Ranger is required to deviate from or amend these instructions.

If you have any questions concerning these Annual Operating Instructions, please call Jess Artz in Pinedale at 367-5754.

/S/ Gary Hayward

Gary Hayward

Acting Pinedale District Ranger

6/11/24

Date

Permittee or Authorized Agent Date

Annual Operating Instructions 2024

These Annual Operating Instructions (AOI) are made part of your grazing permit consistent with Part 1, item 3 and Part 2, Item 8(a) of your Term Grazing Permit for the Muddy Canyon and Irish Canyon allotments and are considered an extension of your term grazing permit. As outlined in Craig Trulocks' May 1, 2006 letter to you, I expect each of your three companies to run as a unique entity. The South Fork sheep (P lazy S) need to be on the allotments outlined below.

I. Authorized Use for 2024:

Permittee	Allotment	No. and Class	Permit Type	Non-Use	Season of Use
South Fork Sheep Company	Muddy Canyon	1000 EL sheep, 6 stock	Term	0	7/20-8/01
South Fork Sheep Company	Irish Canyon	1000 EL sheep, 6 stock	Term	0	8/02-9/10

As discussed during our Spring meeting, here is how you agree to operate this season. As always, frequent and clear communication throughout the grazing season is imperative. Your main Forest Service contact person will be Jess Artz at 367-5754 if you/we need to make any significant changes.

II. General Requirements

The move-on date is only a guide since the on-date will be when range readiness occurs. Move dates are dependent on precipitation and temperature and their effects on vegetation production.

Permittee will ensure that all personnel performing on the ground livestock management are thoroughly familiar with the terms of these annual operating instructions and the term grazing permit. Distribute sheep over the entire pasture being used. Make a concerted effort to use all grazable areas in a pasture. Sheep will be moved off the allotment when forage use in riparian and/or upland areas is at grazing standards. If sheep are allowed to concentrate in riparian areas and/or water developments without being pushed to unused areas, the grazing capacity of the allotment is diminished. Use of riparian areas need to be carefully monitored. The range personnel will monitor forage use in areas where sheep concentrate. Avoid keeping sheep camps in the same location for more than 5 days.

Move dates are approximate and will occur based on range conditions. All campsites will be located a minimum of 200 feet from lakes and System Trails and 100 feet from springs, streams and creeks. Livestock will not be tethered or picketed within 200 feet from lakes and System Trails and 100 feet from springs, streams and creeks. Campsites used in conjunction with livestock operations will be maintained to present a clean, neat and orderly appearance. Flammable refuse will be completely burned. All unburnable materials will be stored properly until removed to a disposal site off National Forest System lands. Burying of trash is prohibited. Temporary holding pens, corrals, or mangers used for riding stock will be removed or cleaned up when the camp is moved or relocated. Facilities authorized on a permanent basis must be kept clean at all times and cleaned up after its use period. All camps must have a serviceable axe and shovel for fire control.

These allotments are within the mandatory food storage area. In general, all food, pet food, processed livestock feed and grain, and refuse must be made unavailable to bears. Any carcass or animals remains will be moved at least 100 yards from live water and roads. Animal carcasses must be moved at least 200 yards from system trails. For specifics please refer to the Bridger-Teton National Forest Occupancy and Use Order # 04-03-330 (the Order).

All predator control will be in accordance with State and Federal Laws. The permittee and/or their agents shall not use or place poison or devices for predator control on National Forest System Lands. Please report all known or suspected black bear, grizzly bear, wolf and mountain lion activity to the appropriate contacts.

All known or suspected black bear, grizzly bear, wolf, and mountain lion activity will be reported to the USDA-FS, WGFD, or USFWS. All predator control will be coordinated by the WGFD in accordance with State and Federal Laws. The permittee and/or their agents shall not use or place poison or devices for predator control on National Forest System Lands.

A cache/storage area is allowed in Big Sandy Openings at your usual location. The cache needs to be bear resistant and removed each fall. A camp trailer and/or sheep wagon are also permitted. A maximum of 6 horses/mules needed for cattle/sheep management will be allowed to overnight in this area at any one time.

Salt is a valuable and flexible tool to distribute livestock to suitable range that otherwise would be lightly utilized. As a rule, salt should be placed where additional forage utilization is desirable. The possession or distribution of salt within wilderness areas is prohibited except for the management of livestock authorized in this permit. No more than 50 pounds of salt shall be placed in any one location at any time, with the exception of staging and transporting activities. Salt must be moved to a new location once a month or more often, when the salting location appears to be becoming beat out to prevent permanent site damage. Salt should also be placed on rock or hardened areas to prevent salt leaching into the ground. No salting is permitted within 1/4 mile of water, riparian areas, roads, Forest System trails, or dispersed camping and picnicking sites except as agreed to by the Forest Service. No is salting permitted within 1/2 mile of traditional congregating areas. When an area has been grazed to the desired utilization, salt shall be removed from the area. The distribution of salt within allotment is allowed for the management of permitted livestock.

Part III of your Term Grazing Permit summarizes your maintenance obligations. **All range improvements must be maintained prior to 07/01.** Any plans to reconstruct or build new improvements on the National Forest must first be coordinated with the Rangeland Management Specialist. No ground disturbing activities should be conducted on the Forest by the permittee or their personnel without approval from the Rangeland Management Specialist or other District staff.

Grazing fees must be paid before livestock can enter the National Forest. Sheep move-on counts may be conducted on randomly selected allotments this year. Brands will be checked periodically throughout the grazing season.

Range inspections may occur several times during the grazing season to check maintenance of range improvements, forage utilization, and compliance with the grazing rotation and standard requirements. You may be invited and are encouraged to participate in inspections and monitoring conducted on the allotment.

The Pinedale Ranger District has an approved Motor Vehicle Use Map (MVUM). The MVUM restricts motor vehicle use to roads which are signed on the ground with a white arrow, which signifies an open route or that are on the MVUM. Please familiarize yourself and any employees conducting activities on your allotment with the MVUM. No travel off open routes is allowed without prior approval.

IV. Use Standards

Allowable Use for Muddy Canyon and Irish Canyon Allotments– Allowable use on the Muddy Canyon or Irish Canyon Allotments shall be 50% measured on key species, by weight, at the end of the growing season for upland vegetation and 55% measured on key species, by weight, for riparian vegetation. Greenline Stubble height shall be no less than 4-inch on key areas to help meet the Livestock Grazing of Riparian Area Standard.

V. Actual Use Reporting

An Actual Use Report will be sent to you at the end of the 2024 grazing season. Please record the date and number of sheep turned onto the allotment, the dates the sheep are moved to and from each allotment and the number of sheep removed from the allotment. Accurate records of these dates will help us manage the allotment. In addition, please record labor and cost associated with maintaining the improvements on your allotment. The Forest Service uses these records to help allocate Range Betterment Funds. These funds are used to purchase materials for improvement.

Situations may develop during the grazing season which require changes to these instructions. If this becomes necessary, or if you cannot comply with some part of these instructions, contact Jess Artz.

Prior written approval from the District Ranger is required to deviate from or amend these instructions.

If you have any questions concerning these Annual Operating Instructions, please call Jess Artz in Pinedale at 367-5754.

/S/ Gary Hayward

Gary Hayward

Acting Pinedale District Ranger

6/11/24

Date

Permittee or Authorized Agent Date

Annual Operating Instructions 2024

These Annual Operating Instructions (AOI) are made part of your grazing permit consistent with Part 1, item 3 and Part 2, Item 8(a) of your Term Grazing Permit for the Silver Creek Allotment and are considered an extension of your term grazing permit.

As discussed during our Spring meeting, here is how you agree to operate this season. As always, frequent and clear communication throughout the grazing season is imperative. Your main Forest Service contact person will be Jess Artz at 367-5754 if you/we need to make any significant changes.

I. Authorized Use for 2024

Permittee	Allotment	No. and Class	Non-Use	Season of Use
East Fork Livestock	Silver Creek	483 Cc, 20 B	0	07/01-09/15
Jensen Land	Silver Creek	150 Cc	0	07/01-09/15
Jim Jensen	Silver Creek	368 Cc	0	07/01-09/15
LATR Acquisition	Silver Creek	172 Cc, 8 B	0	07/01-09/15
Richie Ranch	Silver Creek & Boundary	340 C/c, Silver- 90 C/c, Boundary	0	07/01-09/15

II. General Requirements

The move-on date is only a guide since the on-date will be when range readiness occurs. Move dates are dependent on precipitation and temperature and their effects on vegetation production.

Permittees will ensure that all personnel performing on the ground livestock management are thoroughly familiar with the terms of these annual operating instructions and the term grazing permit. Distribute cattle over the entire allotment being used. Make a concerted effort to use all grazable areas. Cattle will be moved off the allotment when forage use in riparian and/or upland areas is at grazing standards. If cattle are allowed to concentrate in riparian areas and/or water developments without being pushed to unused areas, the grazing capacity of the allotment is diminished. Use of riparian areas needs to be carefully monitored. The range personnel will monitor forage use in areas where cattle concentrate.

Place salt in areas where past and or present forage use is light. Salt should be used to spread utilization across the pasture being grazed. Place salt at least a ¼ mile from riparian areas and at least 200 yards from system trails. Salt should be picked up and moved when an area has been sufficiently used. The permittee is responsible for using water and salt to achieve the best distribution of cattle throughout the pasture.

The Silver Creek allotment is within the mandatory food storage area. All food, pet food, processed livestock feed and grain, and refuse must be made unavailable to bears. Any carcass or animals remains will be moved at least 100 yards from live water, trails and roads. Animal carcasses in highly visible areas need to be relocated to more remote areas.

Part III of your Term Grazing Permit summarizes your maintenance obligations. **All range improvements must be maintained prior to 07/01.** Any plans to reconstruct or build new improvements on the National Forest must first be coordinated with the Rangeland Management Specialist. No ground disturbing activities should be conducted on the Forest by the permittee or their personnel without approval from the Rangeland Management Specialist or other District staff.

Grazing fees must be paid before livestock can enter the National Forest. Cattle move-on counts may be conducted on randomly selected allotments this year. Brands will be checked periodically throughout the grazing season.

Range inspections may occur several times during the grazing season to check maintenance of range improvements, forage utilization, and compliance with standard requirements. You may be invited and are encouraged to participate in inspections and monitoring conducted on the allotment.

IV. Use Standards

Allowable Use for Silver Creek Allotment– Allowable use on the Silver Creek Allotment shall be 50% measured on key species, by weight, at the end of the growing season for upland vegetation and 55% measured on key species, by weight, for riparian vegetation. Greenline Stubble height shall be no less than 4-inch on key sedge species to help meet Livestock Utilization Standards and Livestock Grazing of Riparian Area Standard.

V. Actual Use Reporting

An Actual Use Report will be sent to you at the end of the 2024 grazing season. Please record the date and number of cattle turned onto the allotment, the dates the cattle are moved to and from each pasture on the rotation, and the number of cattle removed from the allotment. Accurate records of these dates will help us manage the allotment. In addition, please record labor and cost associated with maintaining the improvements on your allotment. The Forest Service uses these records to help allocate Range Betterment Funds. These funds are used to purchase materials for improvement. Situations may develop during the grazing season which require changes to these instructions. If this becomes necessary, or if it appears you cannot comply with some part of these instructions, contact Jess Artz, and obtain approval from the District Ranger before initiating changes or deviating from these instructions.

If you have any questions concerning these Annual Operating Instructions, please call Jess Artz in Pinedale at 307-367-5754.

/S/ Gary Hayward

Gary Hayward
Acting Pinedale District Ranger

6/11/24
Date

Permittee or Authorized Agent Date

Annual Operating Instructions 2024

These Annual Operating Instructions (AOI) are made part of your grazing permit consistent with Part 1, item 3 and Part 2, Item 8 (a) of your Term Grazing Permit for the Sweetwater Allotment and are considered an extension of your term grazing permit.

I. Authorized Use for 2024:

Allotment	Permittee	Authorized Number of Livestock	Season of Use
Sweetwater	Frank Ranches	0	Planned Rest
Sweetwater	Steve and Brenda Hovendick	0	Planned Rest

Range improvements must still be maintained on years when planned allotment rest occurs. Any plans to reconstruct or build new improvements on the National Forest must first be coordinated with the Rangeland Management Specialist. Improvements and associated maintenance specifications are listed in your grazing permit. No ground disturbing activities should be conducted on the National Forest by the permittee or their personnel without approval from the Rangeland Management Specialist or other District staff.

Situations may develop during the grazing season which require changes to these instructions. If this becomes necessary, or if it appears you cannot comply with some part of these instructions, please call Jess Artz in Pinedale at 307-367-5754 and obtain approval from the District Ranger before initiating changes or deviating from these instructions.

Sincerely,

/S/ Gary Hayward

Gary Hayward
Acting Pinedale District Ranger

6/11/24
Date

Permittee or Authorized Agent Date



Annual Operating Instructions

2024

I. Authorized Use for 2024

Permittee	Allotment	No. & Class	Non-Use	Permit Type	Season of Use
Doug Vickrey	Badger Creek	140 C/c 10 B	7	Term	07/01-09/30

These Annual Operating Instructions (AOI) are made consistent with Part 1, Item 3 and Part 2, Item 8(a) of your Term Grazing Permit for the Badger Creek Allotment and are considered an extension of your Term Grazing Permit.

II. Pasture Rotation Sequence and Use Standards

Pasture	Number	On Date	Off Date
Badger Creek	150	07/01	09/30

The move-on date is only a guide since the on-date will be when range readiness occurs. Move dates are dependent on precipitation and temperature and their effects on vegetation production. Forage utilization will indicate when moves need to be made earlier. Longer pasture stays can be arranged if an excess of forage condition exists but, must be coordinated with the Forest Service Rangeland Management Specialist.

All food, pet food, processed livestock feed and grain, and refuse must be made unavailable to bears. Any carcass or animals remains will be moved at least 100 yards from live water and roads. Animal carcasses must be moved at least 200 yards from system trails.

The Badger Creek Cattle Allotment lies within the area covered by the Biological Opinion dated April 29, 2019 issued by the United States Fish and Wildlife Service. Therefore, permittees associated with the allotment will assist the Forest Service in achieving the 4 Conservation Recommendations.

Utilization levels will not exceed 50% in uplands/riparians and greenline stubble heights of 4" and 6" shall be maintained dependent on the site as identified in the ROD.

Place salt in areas where past and or present forage use is light. Salt should be used to spread utilization across the pasture being grazed. Place salt at least a ¼ mile from riparian areas and at least 200 yards from system trails. Salt should be picked up and moved when an area has been sufficiently used. A salting plan for the River Bottom Pasture is attached as the final page to this AOI.

Range improvements must be maintained prior to placing cattle on the allotment. Any plans to reconstruct or build new improvements on the National Forest must first be coordinated with the Range Specialist. Improvements and associated maintenance specifications are listed in your grazing permit. Improvements must be maintained in years of total nonuse and total rest. This includes putting up and taking down fences if needed for adjacent pasture management.

Grazing fees must be paid before livestock can enter the National Forest.

Due to increasing public use, gates are often left open and cattle stray into the wrong pasture. I realize this is a problem and an inconvenience. Routine checks need to be made by you and your riders. Please communicate with the Forest Service Rangeland Management Specialist if you experience any abnormal rotation complications.

Situations may develop during the grazing season which require changes to these instructions. If this becomes necessary, or if it appears you cannot comply with some part of these instructions, contact Gary Hayward and obtain approval from the District Ranger before initiating changes or deviating from these instructions.

If you have any questions concerning these Annual Operating Instructions, please call Gary Hayward in Pinedale at 367-5723.

Sincerely,

/S/ Kate Olsen _____

KATE OLSEN

Pinedale District Ranger

Date

Permittee or Authorized Agent Date

Annual Operating Instructions

2024

I. Authorized Use for 2024

Permittee	Allotment	No. & Class	Non-Use	Permit Type	Season of Use
Doug Vickrey	Beaver – Twin	95 C/c 5 B	0	Term	07/15-10/15
Mike Vickrey	Beaver – Twin	190 C/c 10 B	0	Term	07/15-10/15

These Annual Operating Instructions (AOI) are made consistent with Part 1, Item 3 and Part 2, Item 8(a) of your Term Grazing Permit for the Beaver - Twin Allotment and are considered an extension of your Term Grazing Permit.

II. Pasture Rotation Sequence and Use Standards

Pasture	Number	On Date	Off Date
Pasture 1	300	07/15	08/15
Pasture 2	300	08/15	09/15
Pasture 3	300	09/15	10/15

The move-on date is only a guide since the on-date will be when range readiness occurs. Move dates are dependent on precipitation and temperature and their effects on vegetation production. Forage utilization will indicate when moves need to be made earlier. Longer pasture stays can be arranged if an excess of forage condition exists but, must be coordinated with the Forest Service Rangeland Management Specialist.

All food, pet food, processed livestock feed and grain, and refuse must be made unavailable to bears. Any carcass or animals remains will be moved at least 100 yards from live water and roads. Animal carcasses must be moved at least 200 yards from system trails.

The Beaver-Twin Cattle Allotment lies within the area covered by the Biological Opinion dated April 29, 2019 issued by the United States Fish and Wildlife Service. Therefore, permittees associated with the allotment will assist the Forest Service in achieving the 4 Conservation Recommendations.

Utilization levels will not exceed 50% in uplands/riparians. The area directly adjacent to Water Dog Lakes shall not exceed 20% use.

Place salt in areas where past and or present forage use is light. Salt should be used to spread utilization across the pasture being grazed. Place salt at least a ¼ mile from riparian areas and at least 200 yards from system trails. Salt should be picked up and moved when an area has been sufficiently used. A salting plan for the River Bottom Pasture is attached as the final page to this AOI.

Range improvements must be maintained prior to placing cattle on the allotment. Any plans to reconstruct or build new improvements on the National Forest must first be coordinated with the Range Specialist. Improvements and associated maintenance specifications are

listed in your grazing permit. Improvements must be maintained in years of total nonuse and total rest. This includes putting up and taking down fences if needed for adjacent pasture management.

Grazing fees must be paid before livestock can enter the National Forest.

Due to increasing public use, gates are often left open and cattle stray into the wrong pasture. I realize this is a problem and an inconvenience. Routine checks need to be made by you and your riders. Please communicate with the Forest Service Rangeland Management Specialist if you experience any abnormal rotation complications.

Situations may develop during the grazing season which require changes to these instructions. If this becomes necessary, or if it appears you cannot comply with some part of these instructions, contact Gary Hayward and obtain approval from the District Ranger before initiating changes or deviating from these instructions.

If you have any questions concerning these Annual Operating Instructions, please call Gary Hayward in Pinedale at 367-5723.

Sincerely,

/S/ Kate Olsen _____

KATE OLSEN

Pinedale District Ranger	Date	Permittee or Authorized Agent	Date
--------------------------	------	-------------------------------	------

Permittee or Authorized Agent Date

Annual Operating Instructions

2024

I. Authorized Use for 2024

Permittee	Allotment	No. & Class	Non-Use	Permit Type	Season of Use
Campbell Livestock	Big Flattop	145 C/c, 5 Horses	0	Term	06/16-09/30
Doug Vickrey	Big Flattop	0	305 C/c	Term	N/A
Mike Vickrey	Big Flattop	0	100 C/c	Term	N/A

These Annual Operating Instructions (AOI) are made consistent with Part 1, Item 3 and Part 2, Item 8(a) of your Term Grazing Permit for the Big Flattop Allotment and are considered an extension of your Term Grazing Permit.

II. Pasture Rotation Sequence

Pasture	Number	On Date	Off Date
Just north and south of Lozier Creek down to Willow Lake	150	06/16	07/02
Between Snake Lake and Bluff Park	150	07/02	07/17
Indian Park	150	07/17	07/24
Martin Park and Doubletop Mountain	150	07/24	09/02
Big Flattop drift down	150	09/02	09/30

Cattle will not be allowed to congregate on the shorelines of Willow Lake or New Fork Lake.

III. General Requirements

The on-date will depend upon when range readiness occurs, thus, the move-on date serves as a guide only. Move dates are dependent on precipitation and temperature and their effects on vegetation production. Forage utilization will indicate when moves need to be made earlier. Longer stays can be arranged if an excess forage condition exists but must be coordinated with the Forest Service Rangeland Management Specialist.

Riding can generally provide better cattle distribution and proper range use. Permittees or associations will be required to provide the riding needed to properly manage the permitted livestock. Cattle must be monitored by riders and distributed through the pasture, not congregated in traditional areas. They should be well scattered and dispersed in small groups.

Salt is a valuable and flexible tool to distribute livestock to suitable range that otherwise would be lightly utilized. As a rule, salt should be placed where additional forage utilization is desirable. The possession or distribution of salt within wilderness areas is prohibited except when used for the management of livestock authorized in this permit.

- No more than 50 pounds of salt shall be placed in any one location at any time. Salt must be moved to a new location once a month or more often when the salting location appears to be becoming beat out to prevent permanent site damage. Salt should also be placed on rock or hardened areas to prevent salt leaching into the ground.
- No salting permitted within ¼ mile of water, riparian areas, roads, Forest System trails, developed recreation areas, dispersed camping and picnicking sites; except as agreed to by the Forest Service.
- No salting permitted within ½ mile of areas in which cattle typically congregate.

- When an area has been grazed to the desired utilization, salt shall be removed from the area.
- The distribution of salt within allotments is only allowed for the management of permitted livestock.

Lands within this allotment are occupied by grizzly and black bear. To minimize bear conflicts with humans and livestock, the following provisions are recommended:

- Sick or injured animals should be treated and/or removed from National Forest System lands as soon as practical or as directed by the Forest officer, unless human safety is a concern.
- All human, pet and prepared livestock food, beverages, garbage, cooking grease, and other odorous substances should be stored, handled, and disposed of in such a manner as to make it totally unavailable to bears at night and during the day when unattended. Unavailable means: stored in a bear-resistant container approved by the Forest Service, stored in a closed vehicle constructed of solid non-pliable material, or suspended at least ten feet clear of the ground at all points and 4 feet from any supporting tree or pole. Burying of food, garbage, refuse, or grease is prohibited.
- Livestock feed, especially sweetened feed, is a bear attractant. Feed should not be left on the ground after feeding livestock. Nosebags or containers are recommended to minimize spilled feed.
- Any carcasses or animal remains will be moved at least 100 yards from live water and roads, and at least 200 yards from system trails.

All known or suspected black bear, grizzly bear, wolf, and mountain lion activity will be reported to the USDA-FS, WGFD, or USFWS. All predator control will be coordinated by the WGFD in accordance with State and Federal Laws. The permittee and/or their agents shall not use or place poison or devices for predator control on National Forest System Lands.

Range improvements must be maintained no later than June 15, 2024. Range improvements must still be maintained on years where non-use occurs. Any plans to reconstruct or build new improvements on the National Forest must first be coordinated with the Rangeland Management Specialist. Improvements and associated maintenance specifications are listed in your grazing permit. No ground disturbing activities should be conducted on the National Forest by the permittee or their personnel without approval from the Rangeland Management Specialist or other District staff.

Grazing fees must be paid before livestock can enter the National Forest. Cattle move-on counts may be conducted on randomly selected allotments this year. Brands will be checked periodically throughout the grazing season. Only livestock owned by the permittee are authorized to graze under this permit. If requested, the permittee will furnish all evidence of ownership to the Forest Service. Only livestock branded as shown in the application upon which the term permit is based will be allowed to graze under the term grazing permit.

Range inspections may occur several times during the grazing season to check maintenance of range improvements, forage utilization, and compliance with the grazing rotation and standard requirements. You may be invited to participate in inspections conducted on the allotment.

With increasing public use, gates are often left open, and cattle stray into the wrong pasture. The USFS realizes this is a problem and an inconvenience, however, it is still the permittee's

responsibility to keep their animals in the proper unit. Routine checks need to be made by you and/or your rider.

The Pinedale Ranger District has an approved Motor Vehicle Use Map (MVUM). The MVUM restricts motor vehicle use to roads which are signed on the ground with a white arrow, which signifies an open route or that are on the MVUM. Please familiarize yourself and any employees conducting activities on your allotment with the MVUM. No travel off open routes is allowed without prior approval.

IV. Use Standards

Upland use shall not exceed 50% in areas with Idaho fescue, bluebunch wheatgrass, mountain brome, or Letterman's needlegrass. Riparian use shall not exceed 50% on willow, Poa spp., or timothy. Greenline Stubble height shall be no less than 4-inch on key areas to help meet the Livestock Grazing of Riparian Area Standard.

V. Actual Use Reporting

An Actual Use Report will be sent to you at the end of the 2024 grazing season. Please record the date and number of cattle turned onto the allotment, the dates the cattle are moved to and from each pasture on the rotation, and the number of cattle removed from the allotment. Accurate records of these dates will help us manage the allotment. In addition, please record labor and cost associated with maintaining the improvements on your allotment. The Forest Service uses these records to help allocate Range Betterment Funds. These funds are used to purchase materials for improvement.

Situations may develop during the grazing season which require changes to these instructions. If this becomes necessary, or if it appears you cannot comply with some part of these instructions, contact Jess Artz, and obtain approval from the District Ranger before initiating changes or deviating from these instructions.

If you have any questions concerning these Annual Operating Instructions, please call Jess Artz in Pinedale at 307-367-5754.

/S/ Gary Hayward

Gary Hayward
Acting Pinedale District Ranger

6/11/24

Date

Permittee or Authorized Agent Date

Annual Operating Instructions

2024

I. Authorized Use for 2024

Permittee	Allotment	No. & Class	Non-Use	Permit Type	Season of Use
Bar Cross Ranch, LLC	Little Flattop	230 c/c, 10 bulls	0	Term	06/16-09/16

These Annual Operating Instructions (AOI) are made consistent with Part 1, Item 3 and Part 2, Item 8(a) of your Term Grazing Permit for the Little Flattop Allotment and are considered an extension of your Term Grazing Permit.

II. Pasture Rotation Sequence and Use Standards

Pasture	Number	On Date	Off Date
Wood Draw Unit	240	06/16	07/16
West Unit	240	07/16	09/16

Cattle will not be allowed to congregate on the shorelines of New Fork Lakes.

III. General Requirements

The on-date will depend upon when range readiness occurs, thus, the move-on date serves as a guide only. Move dates are dependent on precipitation and temperature and their effects on vegetation production. Forage utilization will indicate when moves need to be made earlier. Longer stays can be arranged if an excess forage condition exists but must be coordinated with the Forest Service Rangeland Management Specialist.

Riding can generally provide better cattle distribution and proper range use. Permittees or associations will be required to provide the riding needed to properly manage the permitted livestock. Cattle must be monitored by riders and distributed through the pasture, not congregated in traditional areas. They should be well scattered and dispersed in small groups.

Salt is a valuable and flexible tool to distribute livestock to suitable range that otherwise would be lightly utilized. As a rule, salt should be placed where additional forage utilization is desirable. The possession or distribution of salt within wilderness areas is prohibited except when used for the management of livestock authorized in this permit.

- No more than 50 pounds of salt shall be placed in any one location at any time. Salt must be moved to a new location once a month or more often, when the salting location appears to be becoming beat out to prevent permanent site damage. Salt should also be placed on rock or hardened areas to prevent salt leaching into the ground.
- No salting permitted within $\frac{1}{4}$ mile of water, riparian areas, roads, Forest System trails, developed recreation areas, dispersed camping and picnicking sites; except as agreed to by the Forest Service.
- No salting permitted within $\frac{1}{2}$ mile of areas in which cattle typically congregate.
- When an area has been grazed to the desired utilization, salt shall be removed from the area.

- The distribution of salt within allotments is only allowed for the management of permitted livestock.

Lands within this allotment are occupied by grizzly and black bear. In order to minimize bear conflicts with humans and livestock, the following provisions are recommended:

- Sick or injured animals should be treated and/or removed from National Forest System lands as soon as practical or as directed by the Forest officer, unless human safety is a concern.
- All human, pet and prepared livestock food, beverages, garbage, cooking grease, and other odorous substances should be stored, handled and disposed of in such a manner as to make it totally unavailable to bears at night and during the day when unattended. Unavailable means: stored in a bear-resistant container approved by the Forest Service, stored in a closed vehicle constructed of solid non-pliable material, or suspended at least ten feet clear of the ground at all points and 4 feet from any supporting tree or pole. Burying of food, garbage, refuse, or grease is prohibited.
- Livestock feed, especially sweetened feed, is a bear attractant. Feed should not be left on the ground after feeding livestock. Nosebags or containers are recommended to minimize spilled feed.
- Any carcasses or animal remains will be moved at least 100 yards from live water and roads, and at least 200 yards from system trails.

All known or suspected black bear, grizzly bear, wolf, and mountain lion activity will be reported to the USDA-FS, WGFD, or USFWS. All predator control will be coordinated by the WGFD in accordance with State and Federal Laws. The permittee and/or their agents shall not use or place poison or devices for predator control on National Forest System Lands.

Range improvements must be maintained no later than June 15, 2024. Any plans to reconstruct or build new improvements on the National Forest must first be coordinated with the Rangeland Management Specialist. Improvements and associated maintenance specifications are listed in your grazing permit. No ground disturbing activities should be conducted on the National Forest by the permittee or their personnel without approval from the Rangeland Management Specialist or other District staff.

Grazing fees must be paid before livestock can enter the National Forest. Cattle move-on counts may be conducted on randomly selected allotments this year. Brands will be checked periodically throughout the grazing season. Only livestock owned by the permittee are authorized to graze under this permit. If requested, the permittee will furnish all evidence of ownership to the Forest Service. Only livestock branded as shown in the application upon which the term permit is based will be allowed to graze under the term grazing permit.

Range inspections may occur several times during the grazing season to check maintenance of range improvements, forage utilization, and compliance with the grazing rotation and standard requirements. You may be invited to participate in inspections conducted on the allotment.

With increasing public use, gates are often left open and cattle stray into the wrong pasture. The USFS realizes this is a problem and an inconvenience, however, it is still the permittee's responsibility to keep their animals in the proper unit. Routine checks need to be made by you and/or your rider.

The Pinedale Ranger District has an approved Motor Vehicle Use Map (MVUM). The MVUM restricts motor vehicle use to roads which are signed on the ground with a white arrow, which signifies an open route or that are on the MVUM. Please familiarize yourself and any employees conducting activities on your allotment with the MVUM. No travel off open routes is allowed without prior approval.

IV. Use Standards

Upland use in the West Unit shall not exceed 60% in areas with Idaho fescue or Letterman's needlegrass. Upland use in the Wood Draw Unit shall not exceed 50% in areas with Idaho fescue or Letterman's needlegrass. Riparian use in the West Unit shall not exceed 50% or be less than 3 inches of stubble height in areas with Kentucky bluegrass, timothy, beaked sedge, Carex spp., or Geyer's willow. Greenline Stubble height shall be no less than 4-inch on remaining key areas to help meet the Livestock Grazing of Riparian Area Standard.

V. Actual Use Reporting

An Actual Use Report will be sent to you at the end of the 2024 grazing season. Please record the date and number of cattle turned onto the allotment, the dates the cattle are moved to and from each pasture on the rotation, and the number of cattle removed from the allotment. Accurate records of these dates will help us manage the allotment. In addition, please record labor and cost associated with maintaining the improvements on your allotment. The Forest Service uses these records to help allocate Range Betterment Funds. These funds are used to purchase materials for improvement.

Situations may develop during the grazing season which require changes to these instructions. If this becomes necessary, or if it appears you cannot comply with some part of these instructions, contact Jess Artz, and obtain approval from the District Ranger before initiating changes or deviating from these instructions.

If you have any questions concerning these Annual Operating Instructions, please call Jess Artz in Pinedale at 307-367-5754.

Sincerely,

/S/ Gary Hayward
Gary Hayward
Acting Pinedale District Ranger

6/11/24
Date

Permittee or Authorized Agent Date

Annual Operating Instructions

2024

I. No Use Authorized for 2024

Permittee	Allotment	No. & Class	Non-Use	Permit Type	Season of Use
Bar Cross Ranch, LLC	New Fork – Boulder	0	511 Yr1	Term	Non-Use (Year 1)

Range improvements must still be maintained on years where non-use is taken. Any plans to reconstruct or build new improvements on the National Forest must first be coordinated with the Rangeland Management Specialist. Improvements and associated maintenance specifications are listed in your grazing permit. No ground disturbing activities should be conducted on the National Forest by the permittee or their personnel without approval from the Rangeland Management Specialist or other District staff.

Situations may develop during the grazing season which require changes to these instructions. If this becomes necessary, or if it appears you cannot comply with some part of these instructions, please call Jess Artz in Pinedale at 307-367-5754 and obtain approval from the District Ranger before initiating changes or deviating from these instructions.

/S/ Gary Hayward

6/11/24

Gary Hayward

Date

Permittee or Authorized Agent Date

Acting Pinedale District Ranger

Annual Operating Instructions

2024

I. Authorized Use for 2024

Permittee	Allotment	No. & Class	Non-Use	Permit Type	Season of Use
Bar Cross Ranch, LLC	Pot Creek	365 Yrl	0	Term	07/16-09/30

These Annual Operating Instructions (AOI) are made consistent with Part 1, Item 3 and Part 2, Item 8(a) of your Term Grazing Permit for the Pot Creek Allotment and are considered an extension of your Term Grazing Permit.

II. Pasture Rotation Sequence and Use Standards

Pasture	Number	On Date	Off Date
Unit 3	365	07/16	08/02
Unit 1	365	08/03	08/26
Unit 2	365	08/27	09/17
Unit 4- Circle S Horse Pasture	365	09/18	09/30

III. General Requirements

The on-date will depend upon when range readiness occurs, thus, the move-on date serves as a guide only. Move dates are dependent on precipitation and temperature and their effects on vegetation production. Forage utilization will indicate when moves need to be made earlier. Longer stays can be arranged if an excess forage condition exists but must be coordinated with the Forest Service Rangeland Management Specialist.

Riding can generally provide better cattle distribution and proper range use. Permittees or associations will be required to provide the riding needed to properly manage the permitted livestock. Cattle must be monitored by riders and distributed through the pasture, not congregated in traditional areas. They should be well scattered and dispersed in small groups.

Salt is a valuable and flexible tool to distribute livestock to suitable range that otherwise would be lightly utilized. As a rule, salt should be placed where additional forage utilization is desirable. The possession or distribution of salt within wilderness areas is prohibited except when used for the management of livestock authorized in this permit.

- No more than 50 pounds of salt shall be placed in any one location at any time. Salt must be moved to a new location once a month or more often, when the salting location appears to be becoming beat out to prevent permanent site damage. Salt should also be placed on rock or hardened areas to prevent salt leaching into the ground.
- No salting permitted within ¼ mile of water, riparian areas, roads, Forest System trails, developed recreation areas, dispersed camping and picnicking sites; except as agreed to by the Forest Service.
- No salting permitted within ½ mile of areas in which cattle typically congregate.

- When an area has been grazed to the desired utilization, salt shall be removed from the area.
- The distribution of salt within allotments is only allowed for the management of permitted livestock.

Lands within this allotment are occupied by grizzly and black bear. In order to minimize bear conflicts with humans and livestock, the following provisions are recommended:

- Sick or injured animals should be treated and/or removed from National Forest System lands as soon as practical or as directed by the Forest officer, unless human safety is a concern.
- All human, pet and prepared livestock food, beverages, garbage, cooking grease, and other odorous substances should be stored, handled and disposed of in such a manner as to make it totally unavailable to bears at night and during the day when unattended. Unavailable means: stored in a bear-resistant container approved by the Forest Service, stored in a closed vehicle constructed of solid non-pliable material, or suspended at least ten feet clear of the ground at all points and 4 feet from any supporting tree or pole. Burying of food, garbage, refuse, or grease is prohibited.
- Livestock feed, especially sweetened feed, is a bear attractant. Feed should not be left on the ground after feeding livestock. Nosebags or containers are recommended to minimize spilled feed.
- Any carcasses or animal remains will be moved at least 100 yards from live water and roads, and at least 200 yards from system trails.

All known or suspected black bear, grizzly bear, wolf, and mountain lion activity will be reported to the USDA-FS, WGFD, or USFWS. All predator control will be coordinated by the WGFD in accordance with State and Federal Laws. The permittee and/or their agents shall not use or place poison or devices for predator control on National Forest System Lands.

Range improvements must be maintained no later than July 15, 2024. Any plans to reconstruct or build new improvements on the National Forest must first be coordinated with the Rangeland Management Specialist. Improvements and associated maintenance specifications are listed in your grazing permit. No ground disturbing activities should be conducted on the National Forest by the permittee or their personnel without approval from the Rangeland Management Specialist or other District staff.

Grazing fees must be paid before livestock can enter the National Forest. Cattle move-on counts may be conducted on randomly selected allotments this year. Brands will be checked periodically throughout the grazing season. Only livestock owned by the permittee are authorized to graze under this permit. If requested, the permittee will furnish all evidence of ownership to the Forest Service. Only livestock branded as shown in the application upon which the term permit is based will be allowed to graze under the term grazing permit.

Range inspections may occur several times during the grazing season to check maintenance of range improvements, forage utilization, and compliance with the grazing rotation and standard requirements. You may be invited to participate in inspections conducted on the allotment.

With increasing public use, gates are often left open and cattle stray into the wrong pasture. The USFS realizes this is a problem and an inconvenience, however, it is still the permittee's responsibility to keep their animals in the proper unit. Routine checks need to be made by you and/or your rider.

The Pinedale Ranger District has an approved Motor Vehicle Use Map (MVUM). The MVUM restricts motor vehicle use to roads which are signed on the ground with a white arrow, which signifies an open route or that are on the MVUM. Please familiarize yourself and any employees conducting activities on your allotment with the MVUM. No travel off open routes is allowed without prior approval.

IV. Use Standards

Upland use shall not exceed 60%. Riparian use shall not exceed 65%. Greenline Stubble height shall be no less than 4-inch on key areas to help meet the Livestock Grazing of Riparian Area Standard.

V. Actual Use Reporting

An Actual Use Report will be sent to you at the end of the 2024 grazing season. Please record the date and number of cattle turned onto the allotment, the dates the cattle are moved to and from each pasture on the rotation, and the number of cattle removed from the allotment. Accurate records of these dates will help us manage the allotment. In addition, please record labor and cost associated with maintaining the improvements on your allotment. The Forest Service uses these records to help allocate Range Betterment Funds. These funds are used to purchase materials for improvement.

Situations may develop during the grazing season which require changes to these instructions. If this becomes necessary, or if it appears you cannot comply with some part of these instructions, contact Jess Artz, and obtain approval from the District Ranger before initiating changes or deviating from these instructions.

If you have any questions concerning these Annual Operating Instructions, please call Jess Artz in Pinedale at 307-367-5754.

/S/ Gary Hayward

Gary Hayward

Acting Pinedale District Ranger

6/11/24

Date

Permittee or Authorized Agent Date

Annual Operating Instructions

2024

I. Authorized Use for 2024

Permittee	Allotment	No. & Class	Non-Use	Permit Type	Season of Use
Manning Ranch	Soda Lake	163 C/c, 9 B	0	Term	06/25-09/15
Glenn Millard	Soda lake	125 C/c	0	Term	07/01-09/15

These Annual Operating Instructions (AOI) are made consistent with Part 1, Item 3 and Part 2, Item 8(a) of your Term Grazing Permit for the Soda Lake Allotment and are considered an extension of your Term Grazing Permit.

II. Pasture Rotation Sequence and Use Standards

Pasture	Number	On Date	Off Date
Lower Unit	172	06/25	08/19
Fremont Lake	125	07/01	08/19
Upper Unit	297	07/22	09/15

Cattle will not be allowed to congregate on the shorelines of Fremont Lake.

III. General Requirements

The on-date will depend upon when range readiness occurs, thus, the move-on date serves as a guide only. Move dates are dependent on precipitation and temperature and their effects on vegetation production. Forage utilization will indicate when moves need to be made earlier. Longer stays can be arranged if an excess forage condition exists but must be coordinated with the Forest Service Rangeland Management Specialist.

Riding can generally provide better cattle distribution and proper range use. Permittees or associations will be required to provide the riding needed to properly manage the permitted livestock. Cattle must be monitored by riders and distributed through the pasture, not congregated in traditional areas. They should be well scattered and dispersed in small groups.

Salt is a valuable and flexible tool to distribute livestock to suitable range that otherwise would be lightly utilized. As a rule, salt should be placed where additional forage utilization is desirable. The possession or distribution of salt within wilderness areas is prohibited except when used for the management of livestock authorized in this permit.

- No more than 50 pounds of salt shall be placed in any one location at any time. Salt must be moved to a new location once a month or more often when the salting location appears to be becoming beat out to prevent permanent site damage. Salt should also be placed on rock or hardened areas to prevent salt leaching into the ground.
- No salting permitted within ¼ mile of water, riparian areas, roads, Forest System trails, developed recreation areas, dispersed camping and picnicking sites; except as agreed to by the Forest Service.

- No salting permitted within ½ mile of areas in which cattle typically congregate.
- When an area has been grazed to the desired utilization, salt shall be removed from the area.
- The distribution of salt within allotments is only allowed for the management of permitted livestock.

Lands within this allotment are occupied by grizzly and black bear. To minimize bear conflicts with humans and livestock, the following provisions are recommended:

- Sick or injured animals should be treated and/or removed from National Forest System lands as soon as practical or as directed by the Forest officer, unless human safety is a concern.
- All human, pet and prepared livestock food, beverages, garbage, cooking grease, and other odorous substances should be stored, handled, and disposed of in such a manner as to make it totally unavailable to bears at night and during the day when unattended. Unavailable means: stored in a bear-resistant container approved by the Forest Service, stored in a closed vehicle constructed of solid non-pliable material, or suspended at least ten feet clear of the ground at all points and 4 feet from any supporting tree or pole. Burying of food, garbage, refuse, or grease is prohibited.
- Livestock feed, especially sweetened feed, is a bear attractant. Feed should not be left on the ground after feeding livestock. Nosebags or containers are recommended to minimize spilled feed.
- Any carcasses or animal remains will be moved at least 100 yards from live water and roads, and at least 200 yards from system trails.

All known or suspected black bear, grizzly bear, wolf, and mountain lion activity will be reported to the USDA-FS, WGFD, or USFWS. All predator control will be coordinated by the WGFD in accordance with State and Federal Laws. The permittee and/or their agents shall not use or place poison or devices for predator control on National Forest System Lands.

Range improvements must be maintained no later than June 24, 2024. Any plans to reconstruct or build new improvements on the National Forest must first be coordinated with the Rangeland Management Specialist. Improvements and associated maintenance specifications are listed in your grazing permit. No ground disturbing activities should be conducted on the National Forest by the permittee or their personnel without approval from the Rangeland Management Specialist or other District staff.

Grazing fees must be paid before livestock can enter the National Forest. Cattle move-on counts may be conducted on randomly selected allotments this year. Brands will be checked periodically throughout the grazing season. Only livestock owned by the permittee are authorized to graze under this permit. If requested, the permittee will furnish all evidence of ownership to the Forest Service. Only livestock branded as shown in the application upon which the term permit is based will be allowed to graze under the term grazing permit.

Range inspections may occur several times during the grazing season to check maintenance of range improvements, forage utilization, and compliance with the grazing rotation and standard requirements. You may be invited to participate in inspections conducted on the allotment.

With increasing public use, gates are often left open and cattle stray into the wrong pasture. The USFS realizes this is a problem and an inconvenience, however, it is still the permittee's responsibility to keep their animals in the proper unit. Routine checks need to be made by you and/or your rider.

The Pinedale Ranger District has an approved Motor Vehicle Use Map (MVUM). The MVUM restricts motor vehicle use to roads which are signed on the ground with a white arrow, which signifies an open route or that are on the MVUM. Please familiarize yourself and any employees conducting activities on your allotment with the MVUM. No travel off open routes is allowed without prior approval.

IV. Use Standards

Upland use shall not exceed 50% in areas with Idaho fescue, bluebunch wheatgrass, *Poa* spp., or *Stipa* spp. and shall not exceed 35-50% in the Fremont Ridge Pasture in areas with bitterbrush. Riparian use shall not exceed 50% on willow and no more than 50% overall on *Poa* spp. or timothy. Greenline Stubble height shall be no less than 4-inch on key areas to help meet the Livestock Grazing of Riparian Area Standard.

V. Actual Use Reporting

An Actual Use Report will be sent to you at the end of the 2024 grazing season. Please record the date and number of cattle turned onto the allotment, the dates the cattle are moved to and from each pasture on the rotation, and the number of cattle removed from the allotment. Accurate records of these dates will help us manage the allotment. In addition, please record labor and cost associated with maintaining the improvements on your allotment. The Forest Service uses these records to help allocate Range Betterment Funds. These funds are used to purchase materials for improvement.

Situations may develop during the grazing season which require changes to these instructions. If this becomes necessary, or if it appears you cannot comply with some part of these instructions, contact Jess Artz, and obtain approval from the District Ranger before initiating changes or deviating from these instructions.

If you have any questions concerning these Annual Operating Instructions, please call Jess Artz in Pinedale at 307-367-5754.

/S/ Gary Hayward

6/11/24

Gary Hayward

Date

Permittee or Authorized Agent Date

Acting Pinedale District Ranger

Annual Operating Instructions 2024

These Annual Operating Instructions (AOI) are made part of your grazing permit consistent with Part 1, item 3 and Part 2, Item 8(a) of your Term Grazing Permit for the West Sagebrush Creek and Lower Dutch Joe allotments and are considered an extension of your term grazing permit. As outlined in Craig Trulocks' May 1, 2006 letter to you, I expect each of your three companies to run as a unique entity.

I. Authorized Use for 2024:

Permittee	No. and Class	Permit Area	Season of Use
Dunton Sheep Company	264 C/c, 6 horse/mule	West Sagebrush Creek	7/11-8/11
Dunton Sheep Company	1350 sheep E/L, 6 horse/mule	Lower Dutch Joe	7/15-9/10

As discussed during our Spring meeting, here is how you agree to operate this season. As always, frequent and clear communication throughout the grazing season is imperative. Your main Forest Service contact person will be Jess Artz at 367-5754 if you/we need to make any significant changes.

II. Pasture Rotation Sequence

Grazing Unit	Approximate Livestock #s	Date Cattle/Sheep Enter Unit	Date Cattle/Sheep Leave Unit
Lower Dutch Joe	1350 sheep E/L	07/15	08/05
Crows Nest	1350 sheep E/L	08/06	09/10
West Sagebrush Creek	264 cattle C/c	07/11	08/11

III. General Requirements

The move-on date is only a guide since the on-date will be when range readiness occurs. Move dates are dependent on precipitation and temperature and their effects on vegetation production.

Permittee will ensure that all personnel performing on-the-ground livestock management are thoroughly familiar with the terms of these annual operating instructions and the term grazing permit. The permittee will provide sufficient herders to get proper distribution and management of livestock on the allotments. It is in our best interest to keep cattle well distributed. As always, move dates are approximate and will occur based on range conditions.

All campsites will be located a minimum of 200 feet from lakes and System Trails and 100 feet from springs, streams and creeks. Livestock will not be tethered or picketed within 200 feet from lakes and System Trails and 100 feet from springs, streams and creeks. Campsites used in conjunction with livestock operations will be maintained to present a clean, neat and orderly appearance. Flammable refuse will be completely burned. All unburnable materials will be stored properly until removed to a disposal site off National Forest System lands. Burying of trash is prohibited. Temporary holding pens, corrals, or mangers used for riding stock will be removed or cleaned up when the camp is moved or relocated. Facilities authorized on a permanent basis must be kept clean at all times and cleaned up after its use period. All camps must have a serviceable axe and shovel for fire control.

These allotments are within the mandatory food storage area. In general, all food, pet food, processed livestock feed and grain, and refuse must be made unavailable to bears. Any carcass or animals remains

will be moved at least 100 yards from live water and roads. Animal carcasses must be moved at least 200 yards from system trails. For specifics please refer to the Bridger-Teton National Forest Occupancy and Use Order # 04-03-330 (the Order).

All predator control will be in accordance with State and Federal Laws. The permittee and/or their agents shall not use or place poison or devices for predator control on National Forest System Lands. Please report all known or suspected black bear, grizzly bear, wolf and mountain lion activity to the appropriate contacts.

All known or suspected black bear, grizzly bear, wolf, and mountain lion activity will be reported to the USDA-FS, WGFD, or USFWS. All predator control will be coordinated by the WGFD in accordance with State and Federal Laws. The permittee and/or their agents shall not use or place poison or devices for predator control on National Forest System Lands.

A cache/storage area is allowed in Big Sandy Openings at your usual location. The cache needs to be bear resistant and removed each fall. A camp trailer and/or sheep wagon are also permitted. A maximum of 6 horses needed for cattle management will be allowed to overnight in this area at any one time.

Salt is a valuable and flexible tool to distribute livestock to suitable range that otherwise would be lightly utilized. As a rule, salt should be placed where additional forage utilization is desirable. The possession or distribution of salt within wilderness areas is prohibited except for the management of livestock authorized in this permit. No more than 50 pounds of salt shall be placed in any one location at any time, with the exception of staging and transporting activities. Salt must be moved to a new location once a month or more often, when the salting location appears to be becoming beat out to prevent permanent site damage. Salt should also be placed on rock or hardened areas to prevent salt leaching into the ground. No salting is permitted within 1/4 mile of water, riparian areas, roads, Forest System trails, or dispersed camping and picnicking sites except as agreed to by the Forest Service. No is salting permitted within 1/2 mile of traditional congregating areas. When an area has been grazed to the desired utilization, salt shall be removed from the area. The distribution of salt within allotment is allowed for the management of permitted livestock

Part III of your Term Grazing Permit summarizes your maintenance obligations. **All range improvements must be maintained prior to 07/01.** Any plans to reconstruct or build new improvements on the National Forest must first be coordinated with the Rangeland Management Specialist. No ground disturbing activities should be conducted on the Forest by the permittee or their personnel without approval from the Rangeland Management Specialist or other District staff.

Grazing fees must be paid before livestock can enter the National Forest. Cattle move-on counts may be conducted on randomly selected allotments this year. Brands will be checked periodically throughout the grazing season.

Range inspections may occur several times during the grazing season to check maintenance of range improvements, forage utilization, and compliance with the grazing rotation and standard requirements. You may be invited and are encouraged to participate in inspections and monitoring conducted on the allotment.

Because of increasing public use, gates are often left open and cattle stray into the wrong pasture. I realize this is a problem and an inconvenience. However, it is still the permittee's responsibility to

keep their animals in the proper unit. Routine checks need to be made by you and your rider. The Pinedale Ranger District has an approved Motor Vehicle Use Map (MVUM). The MVUM restricts motor vehicle use to roads which are signed on the ground with a white arrow, which signifies an open route or that are on the MVUM. Please familiarize yourself and any employees conducting activities on your allotment with the MVUM. No travel off open routes is allowed without prior approval.

IV. Use Standards

Allowable Use for West Sagebrush Creek and Lower Dutch Joe Allotments- Allowable Use for West Sagebrush Creek and Lower Dutch Joe Allotments shall be 50% measured on key species, by weight, at the end of the growing season for upland vegetation and 55% measured on key species, by weight, for riparian vegetation. Greenline Stubble height shall be no less than 4-inch on key areas to help meet the Livestock Utilization Standards and Livestock Grazing of Riparian Area Standard.

V. Actual Use Reporting

An Actual Use Report will be sent to you at the end of the 2024 grazing season. Please record the date and number of sheep/cattle turned onto the allotment, the dates the sheep/cattle are moved to and from each pasture and the number of sheep/cattle removed from the allotment. Accurate records of these dates will help us manage the allotment. In addition, please record labor and cost associated with maintaining the improvements on your allotment. The Forest Service uses these records to help allocate Range Betterment Funds. These funds are used to purchase materials for improvement.

Situations may develop during the grazing season which require changes to these instructions. If this becomes necessary, or if you cannot comply with some part of these instructions, contact Jess Artz. **Prior written approval from the District Ranger is required to deviate from or amend these instructions.**

If you have any questions concerning these Annual Operating Instructions, please call Jess Artz in Pinedale at 367-5754.

/S/ Gary Hayward

6/11/24

Gary Hayward
Acting Pinedale District Ranger

Date

Permittee or Authorized Agent Date

Annual Operating Instructions 2024

I. Authorized Use for 2024

Permittee	No. and Class	Permit Type	Season of Use
Carroll David Noble Revocable Trust	314 C/c, 69 Yrl, 18 B	Term	06/14-09/20

II. Pasture Rotation Sequence and Use Standards

Grazing Unit	Approximate Livestock Numbers	Date Cattle Enter Unit
Pasture 1	314 C/c, 69 Yrl, 18 B	Cattle will rotate
Pasture 2	314 C/c, 69 Yrl, 18 B	through all pastures.
Pasture 3	314 C/c, 69 Yrl, 18 B	No pasture will be
Pasture 4	314 C/c, 69 Yrl, 18 B	grazed season long.

These Annual Operating Instructions (AOI) are made part of your grazing permit consistent with Part 1, item 3 and Part 2, Item 8(a) of your Term Grazing Permit for the Noble Pastures Allotment and are considered an extension of your term grazing permit.

The move-on date is only a guide since the on-date will be when range readiness occurs. Move dates are dependent on precipitation and temperature and their effects on vegetation production. Forage utilization will indicate when moves need to be made earlier. Longer stays can be arranged if an excess forage condition exists, but must be coordinated with the Forest Service Rangeland Management Specialist.

The Noble Pastures allotment is within the mandatory food storage area. All food, pet food, processed livestock feed and grain, and refuse must be made unavailable to bears. Any carcass or animals remains will be moved at least 100 yards from live water and roads.

Place salt in areas where past and or present forage use is light. Salt should be used to spread utilization across the pasture being grazed. Salt should be picked up and moved when an area has been sufficiently used.

Range improvements must be maintained prior to placing cattle on the allotment. Any plans to reconstruct or build new improvements on the National Forest must first be coordinated with the Rangeland Management Specialist. Improvements and associated maintenance specifications are listed in your grazing permit. Improvements must be maintained in years of total nonuse and total rest. This includes putting up and taking down fences if needed for adjacent pasture management.

No ground disturbing activities should be conducted on the Natioanl Forest by the permittee or their personnel without approval from the Rangeland Management Specialist or other District staff.

A six inch stubble height along the greenline on Tosi Creek shall be maintained in accordance with the ROD that was recently signed for the Upper Green River area including Noble Pastures.

Grazing fees must be paid before livestock can enter the National Forest. Please notify Forest Service Rangeland Management Specialist, Gary Hayward at 367-4326 before cattle are turned onto the National Forest.

Because of increasing public use, gates are often left open and cattle stray into the wrong pasture. I realize this is a problem and an inconvenience. Routine checks need to be made by you and your riders. Please communicate with the Forest Service Rangeland Management Specialist if you experience any abnormal rotation complications.

Situations may develop during the grazing season which require changes to these instructions. If this becomes necessary, or if you cannot comply with some part of these instructions, contact Gary Hayward and obtain approval from the District Ranger before initiating changes or deviating from these instructions.

If you have any questions concerning these Annual Operating Instructions, please call Gary Hayward in Pinedale at 367-5723.

Sincerely,

/S/ Kate Olsen

KATE OLSEN

Pinedale District Ranger

06/05/2024

Date

Permittee or Authorized Agent

Date

Annual Operating Instructions 2024

These Annual Operating Instructions (AOI) are made part of your grazing permit consistent with Part 1, item 3 and Part 2, Item 8(a) of your Term Grazing Permit for the Upper Green River Cattle Allotment and are an extension of your term grazing permit.

I. Authorized Use for the Upper Green River Cattle Allotment 2024

Permittee	No. and Class	Non-Use	Season of Use
Wapika Ranch, LLC	190 C/C, 250 Yrl, 8 B		06/16-10/15
Michael R. Beard	565 C/c, Yrl		06/16-10/15
Jeannie and Millford Lockwood	90 C/c		06/16-10/15
Grubbing Hoe Ranch Partnership	450 C/c, 20B		06/16-10/15
KM Cattle Company	75 Yrl		06/16-10/15/
Murdock Land & Livestock	500 C/c		06/16-10/15
Stanley G. Murdock Living Trust	300 C/c, 330 Yrl, 30 C, 23 B		06/16-10/15
Klaren Cattle Co.	192 C/c, 7 C, 70 yrl, 11 B		06/16-10/15
TY Ranch LLC	225 C/c, 130 Yrl, 16 B		06/16-10/15
Price, Charles and DeeAnn	150 C/c, 167 Yrl, 16 B		06/16-10/15
Price, Kent	222 C/c, 242 Yrl, 59 Yrl, 17 B		06/16-10/15
Roberts Cattle Company	475 Yrl		06/16-10/15
Sommers Ranch, LLC	735 C/c, Yrl, B		06/16-10/15
Window Sash, LLC	552 C/c, 16 B		06/16-10/15
Garland and Rhonda Swain	208 Yrl		06/16-10/15
Upper Green River Cattle Assoc.	25 Horses		06/01-10/15

II. Pasture Rotation Sequence

Grazing Unit	Approximate #'s	Date Cattle Enter Unit	Date Cattle Leave Unit
Mud Lake-West	3000	06/16	07/15
Fish Creek	3000	07/15	09/15
Mud Lake-East	3000	09/15	10/15
Roaring Fork Pasture	NTE 680HM	06/16	10/15
Mosquito Lake SW	1300	06/16	07/15
Mosquito Lake NW	1300	07/15	08/15
Mosquito Lake NE	1300	08/15	09/15
Mosquito Lake SE	1300	09/15	10/15
Lower Tepee (Flats)	800	08/01	09/15
Upper Tepee (Ridge)	800	09/15	10/15
Tosi Creek (Moose Lake) and Upper Tosi	800	06/16	08/01
Upper Gypsum Creek	1400	06/25	09/01
Lower Gypsum Creek	1400	09/01	10/15

The move-on date is only a guide since the on-date will be when range readiness occurs. Move dates are dependent on precipitation and temperature and their effects on vegetation production. Forage utilization will indicate when moves need to be made earlier. Longer pasture stays can be arranged if an excess of forage condition exists but, must be coordinated with the Forest Service Rangeland Management Specialist.

All food, pet food, processed livestock feed and grain, and refuse must be made unavailable to bears. Any carcass or animal remains will be moved at least 100 yards from live water and roads. Animal carcasses must be moved at least 200 yards from system trails.

The Upper Green River Cattle Allotment lies within the area covered by the Biological Opinion dated April 29, 2019 issued by the United States Fish and Wildlife Service. Therefore, permittees associated with the allotment will assist the Forest Service in achieving the 4 Conservation Recommendations.

Utilization levels will not exceed 50% in uplands/riparians and greenline stubble heights of 4" and 6" shall be maintained dependent on the site as identified in the ROD.

Place salt in areas where past and or present forage use is light. Salt should be used to spread utilization across the pasture being grazed. Place salt at least a ¼ mile from riparian areas and at least 200 yards from system trails. Salt should be picked up and moved when an area has been sufficiently used. A salting plan for the River Bottom Pasture is attached as the final page to this AOI.

Range improvements must be maintained prior to placing cattle on the allotment. Any plans to reconstruct or build new improvements on the National Forest must first be coordinated with the Range Specialist. Improvements and associated maintenance specifications are listed in your grazing permit. Improvements must be maintained in years of total nonuse and total rest. This includes putting up and taking down fences if needed for adjacent pasture management.

Grazing fees must be paid before livestock can enter the National Forest.

Due to increasing public use, gates are often left open and cattle stray into the wrong pasture. I realize this is a problem and an inconvenience. Routine checks need to be made by you and your riders. Please communicate with the Forest Service Rangeland Management Specialist if you experience any abnormal rotation complications.

Situations may develop during the grazing season which require changes to these instructions. If this becomes necessary, or if it appears you cannot comply with some part of these instructions, contact Gary Hayward and obtain approval from the District Ranger before initiating changes or deviating from these instructions.

If you have any questions concerning these Annual Operating Instructions, please call Gary Hayward in Pinedale at 367-5723.

<u>/S/ Kate Olsen</u>	<u>06/05/24</u>	<u></u>	<u></u>
KATE OLSEN	Date	Permittee or Authorized Agent	Date
Pinedale District Ranger			

Annual Operating Instructions 2024

I. Authorized Use for 2024

Permittee	Allotment	No. and Class	Permit Type	Season of Use
Window Sash LLC	Wagon Creek	26 Cattle, C/c Or 52 C/c	Term	7/15-10/15 NTE 103 AUMs

II. Pasture Rotation Sequence and Use Standards

These Annual Operating Instructions (AOI) are made part of your grazing permit consistent with Part 1, item 3 and Part 2, Item 8(a) of your Term Grazing Permit for the Wagon Creek Allotment and are an extension of your term grazing permit.

The move-on date is only a guide since the on-date will be when range readiness occurs. Move dates are dependent on precipitation and temperature and their effects on vegetation production. Forage utilization will indicate when moves need to be made earlier.

The Wagon Creek allotment is within the mandatory food storage area. All food, pet food, processed livestock feed and grain, and refuse must be made unavailable to bears. Any carcass or animal remains will be moved at least 100 yards from live water and roads. Animal carcasses must be moved at least 200 yards from system trails.

The Wagon Creek Cattle Allotment lies within the area covered by the Biological Opinion dated April 29, 2019 issued by the United States Fish and Wildlife Service. Therefore, permittees associated with the allotment will assist the Forest Service in achieving the 4 Conservation Recommendations.

Additionally, the Upper Green River Grazing EIS record of decision was signed in 2019. Therefore, we will begin implementing that decision and utilization levels will not exceed 50% in uplands/riparians and greenline stubble heights of 4" and 6" shall be maintained dependent on the site as identified in the ROD.

Place salt in areas where past and or present forage use is light. Salt should be used to spread utilization across the pasture being grazed. Place salt at least a ¼ mile from riparian areas and at least 200 yards from system trails. Salt should be picked up and moved when an area has been sufficiently used. Contact the Rangeland Management Specialist if you need suggestions. The permittee is responsible for using water and salt to achieve the best distribution of cattle throughout the pasture.

Range improvements must be maintained prior to placing cattle on the allotment. Improvements and associated maintenance specifications are listed in your grazing permit. Improvements must be maintained in years of total nonuse and total rest. This includes putting up and taking down

fences if needed for adjacent pasture management.

No ground disturbing activities should be conducted on the National Forest by the permittee or their personnel without approval from the Range Specialist or other District staff.

Grazing fees must be paid before livestock can enter the National Forest. Please notify Forest Service Rangeland Management Specialist, Gary Hayward at 367-4326, at least 5 days before cattle are turned onto the National Forest.

With increasing public use, gates are often left open and cattle stray into the wrong pasture. I realize this is a problem and an inconvenience. Routine checks need to be made by you and your riders. Please communicate with the Forest Service Rangeland Management Specialist if you experience any abnormal rotation complications.

The Pinedale Ranger District has an approved Motor Vehicle Use Map (MVUM). Please familiarize yourself and any employees conducting activities on your allotment with the MVUM. No travel off of open routes is allowed without prior approval.

Situations may develop during the grazing season which require changes to these instructions. If this becomes necessary, or if it appears you cannot comply with some part of these instructions, contact Gary Hayward and obtain approval from the District Ranger before initiating changes or deviating from these instructions.

If you have any questions concerning these Annual Operating Instructions, please call Gary Hayward in Pinedale at 367-5723.

/S/ Kate Olsen

06/05/2024

KATE OLSEN
Pinedale District Ranger

Date

Permittee or Authorized Agent Date