

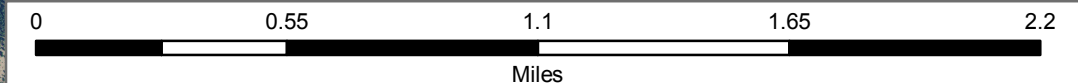
**Salmon River Breaks
Fuels Management & Wildlife Habitat Improvement
Aerial Weed Control and Native Grass Seeding**

**Treatments Scheduled for
October 24th - October 31st
in Project Area outlined in red**

Sage Creek

Approx. 2 miles to
North Fork, Idaho

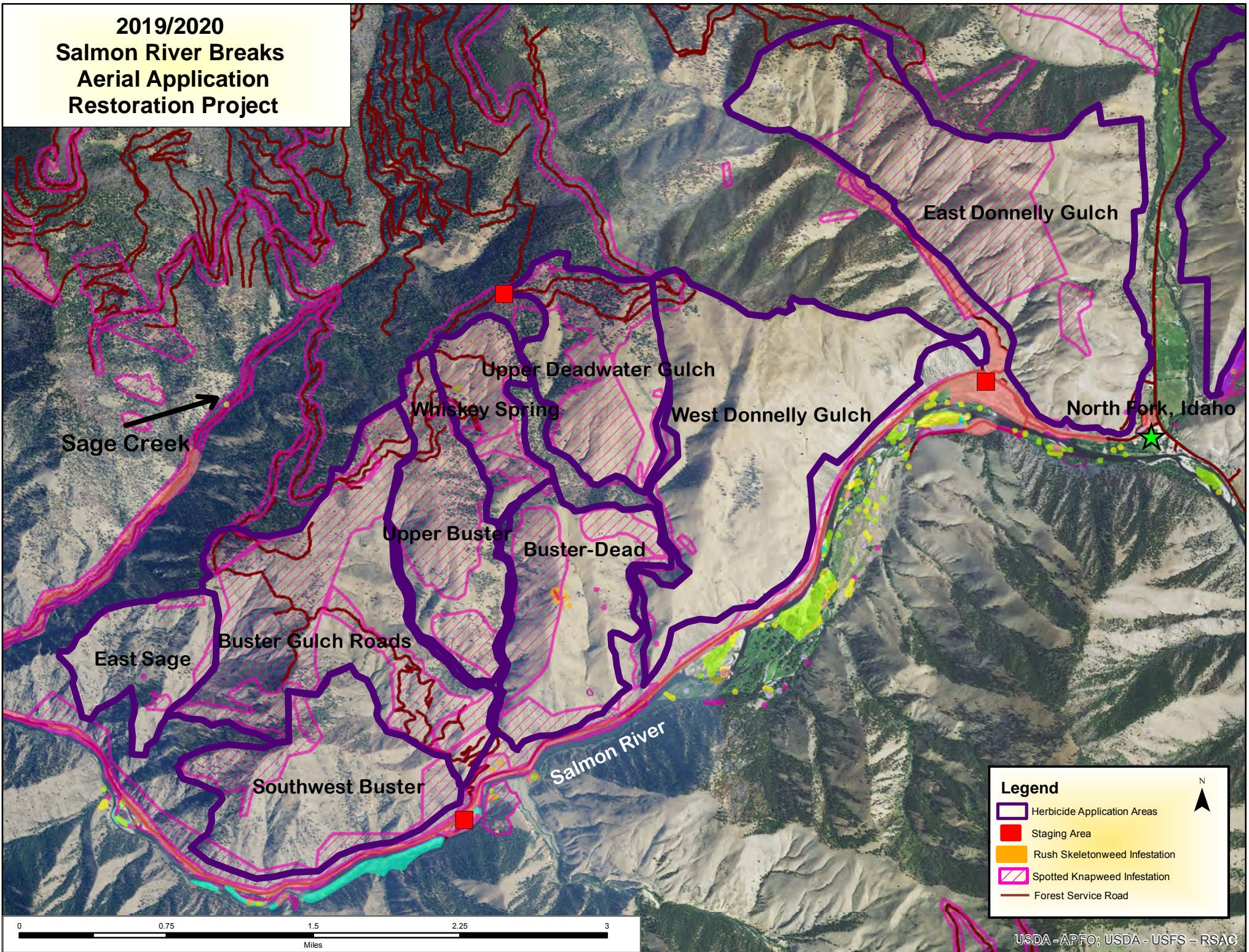
Salmon River



Legend

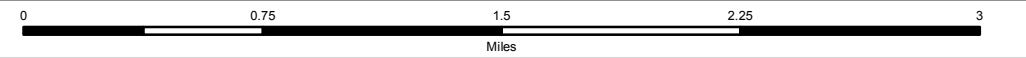
- Salmon River Breaks Project Boundary
- Aerial Seeding Areas
- Herbicide Application Areas
- Cheatgrass Infestation
- Rush Skeletonweed Infestation
- Spotted Knapweed Infestation
- Forest Service Road

**2019/2020
Salmon River Breaks
Aerial Application
Restoration Project**

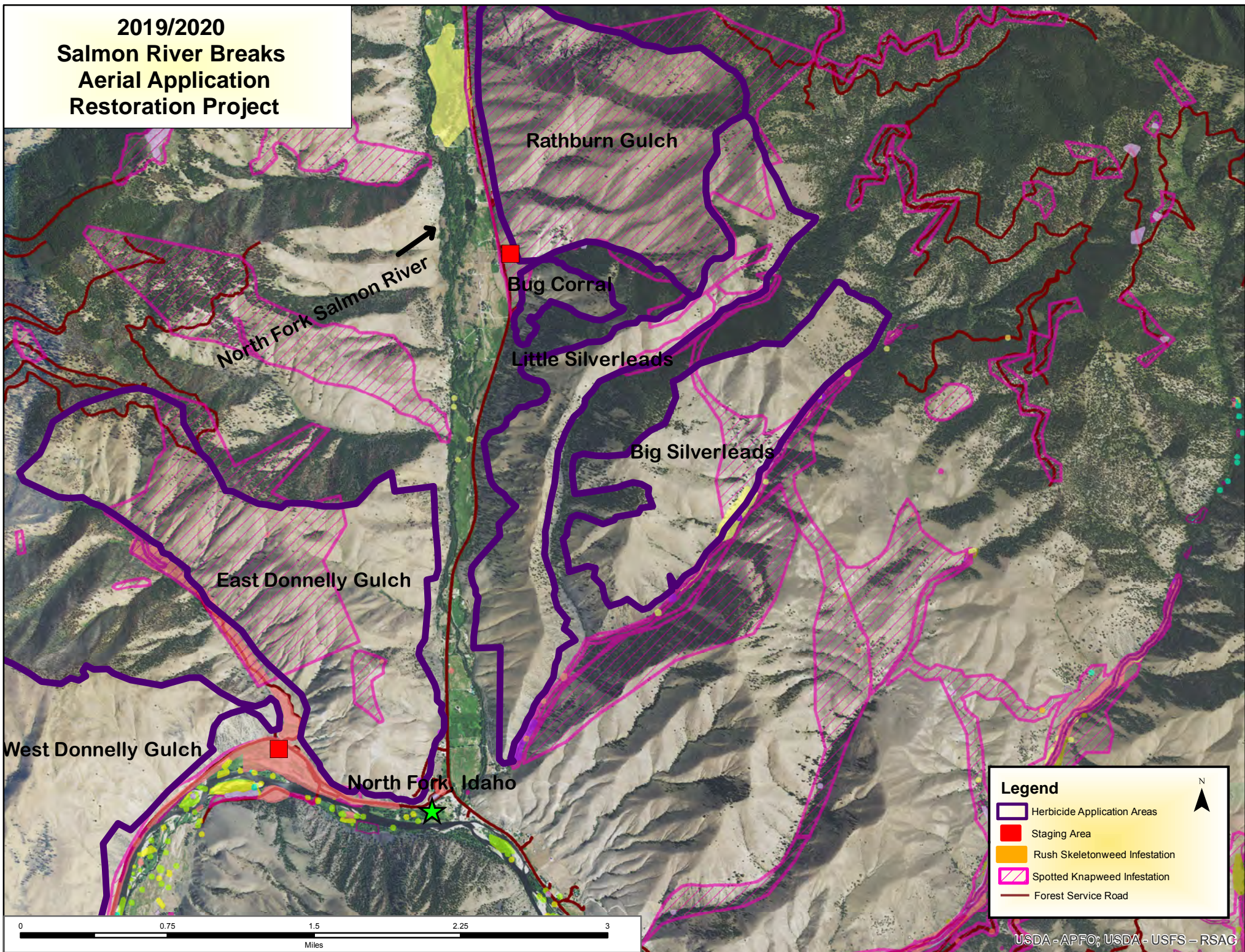


Legend

- Herbicide Application Areas
- Staging Area
- Rush Skeletonweed Infestation
- Spotted Knapweed Infestation
- Forest Service Road



**2019/2020
Salmon River Breaks
Aerial Application
Restoration Project**



North Fork Salmon River

Rathburn Gulch

Bug Corral

Little Silverleads

Big Silverleads

East Donnelly Gulch

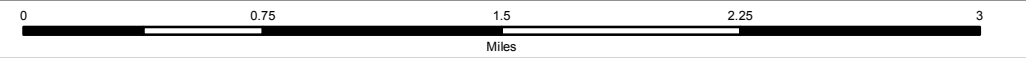
West Donnelly Gulch

North Fork Idaho

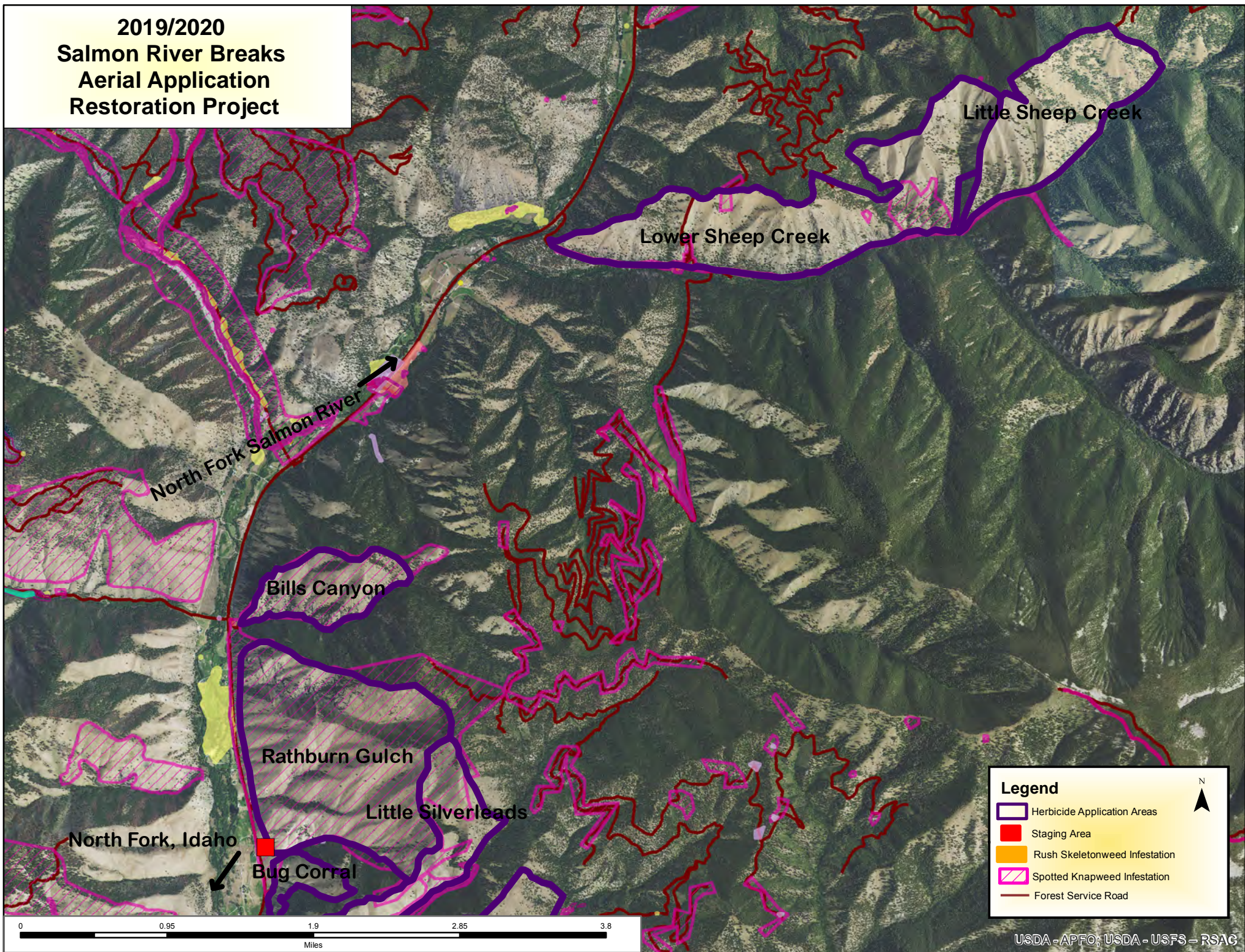
Legend

- Herbicide Application Areas
- Staging Area
- Rush Skeletonweed Infestation
- Spotted Knapweed Infestation
- Forest Service Road

N

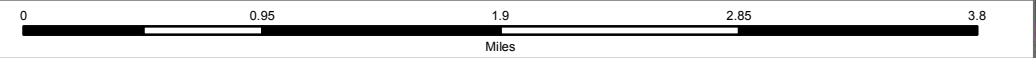


**2019/2020
Salmon River Breaks
Aerial Application
Restoration Project**

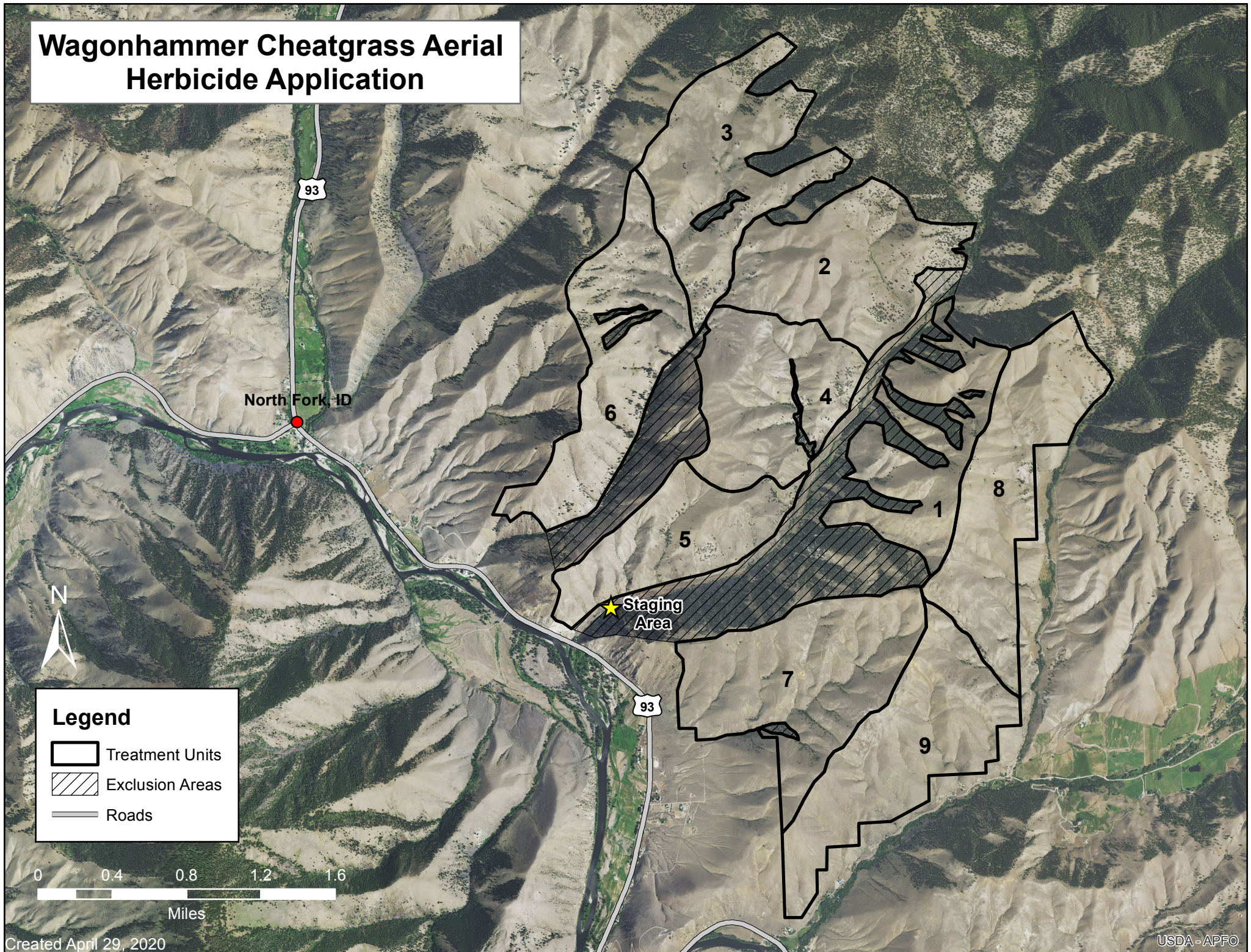


Legend

- Herbicide Application Areas
- Staging Area
- Rush Skeletonweed Infestation
- Spotted Knapweed Infestation
- Forest Service Road

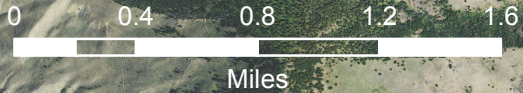


Wagonhammer Cheatgrass Aerial Herbicide Application

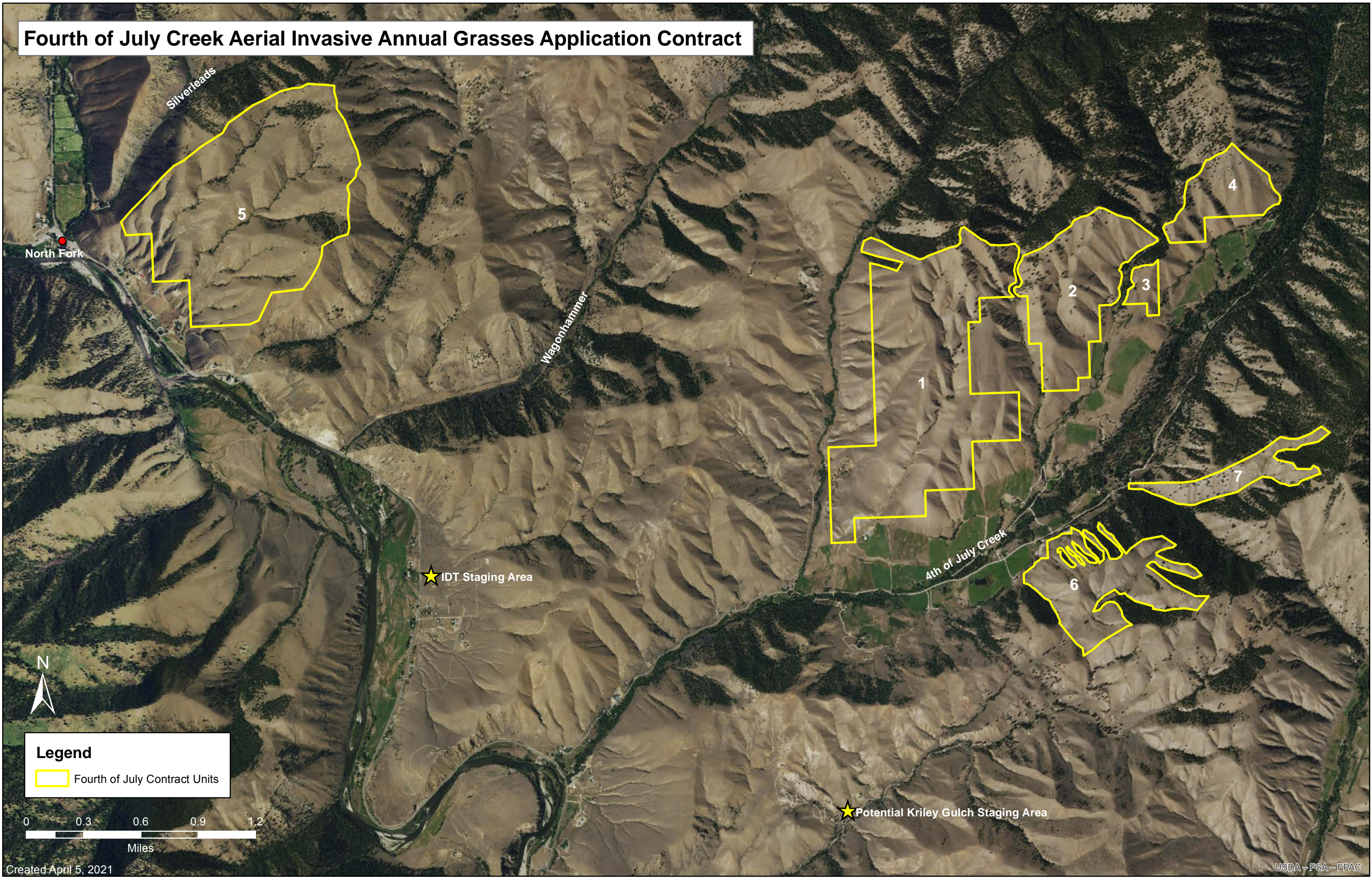


Legend

-  Treatment Units
-  Exclusion Areas
-  Roads



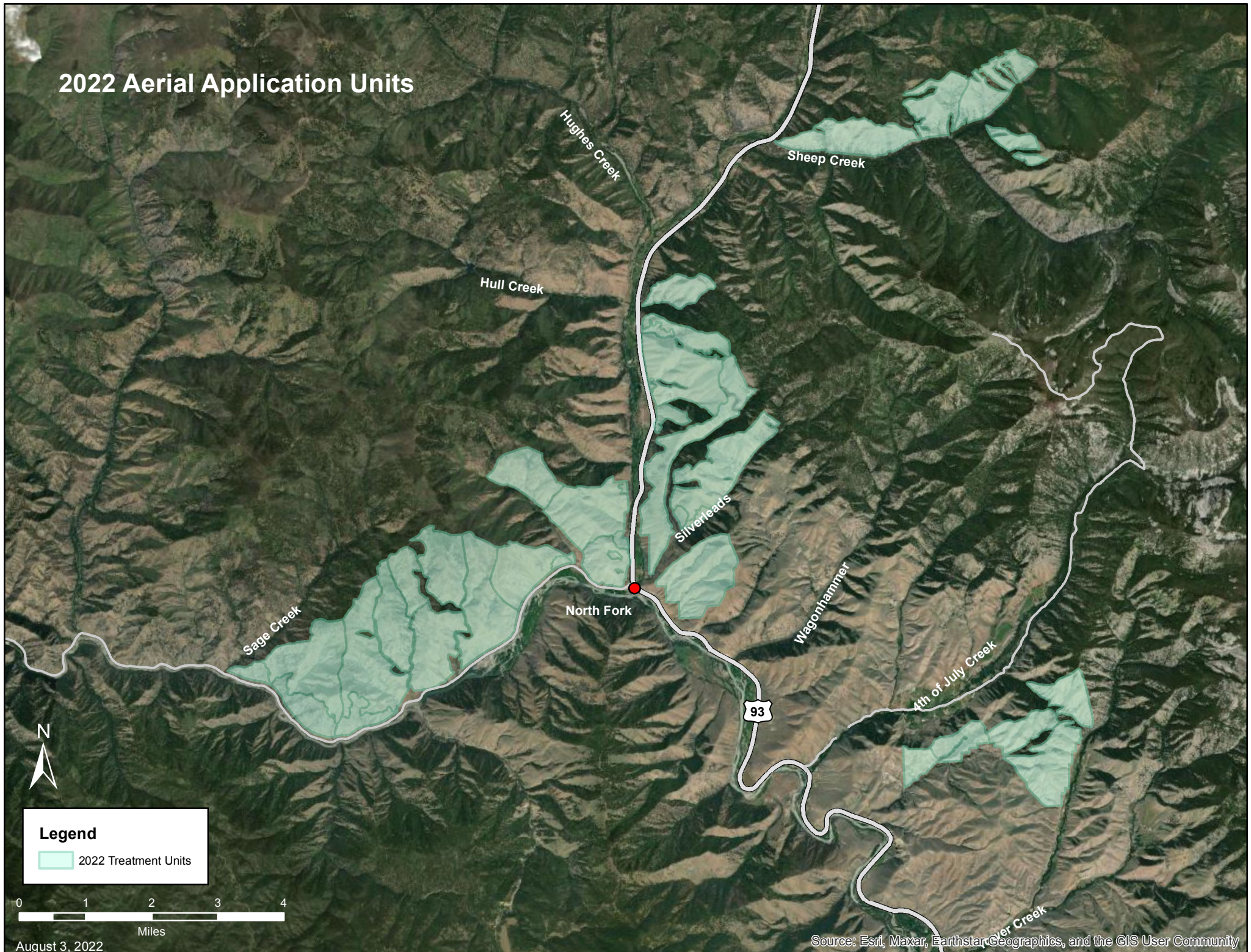
Fourth of July Creek Aerial Invasive Annual Grasses Application Contract



Legend
Fourth of July Contract Units

0 0.3 0.6 0.9 1.2
Miles

2022 Aerial Application Units



Legend

- 2022 Treatment Units



August 3, 2022

Source: Esri, Maxar, Earthstar Geographics, and the GIS User Community