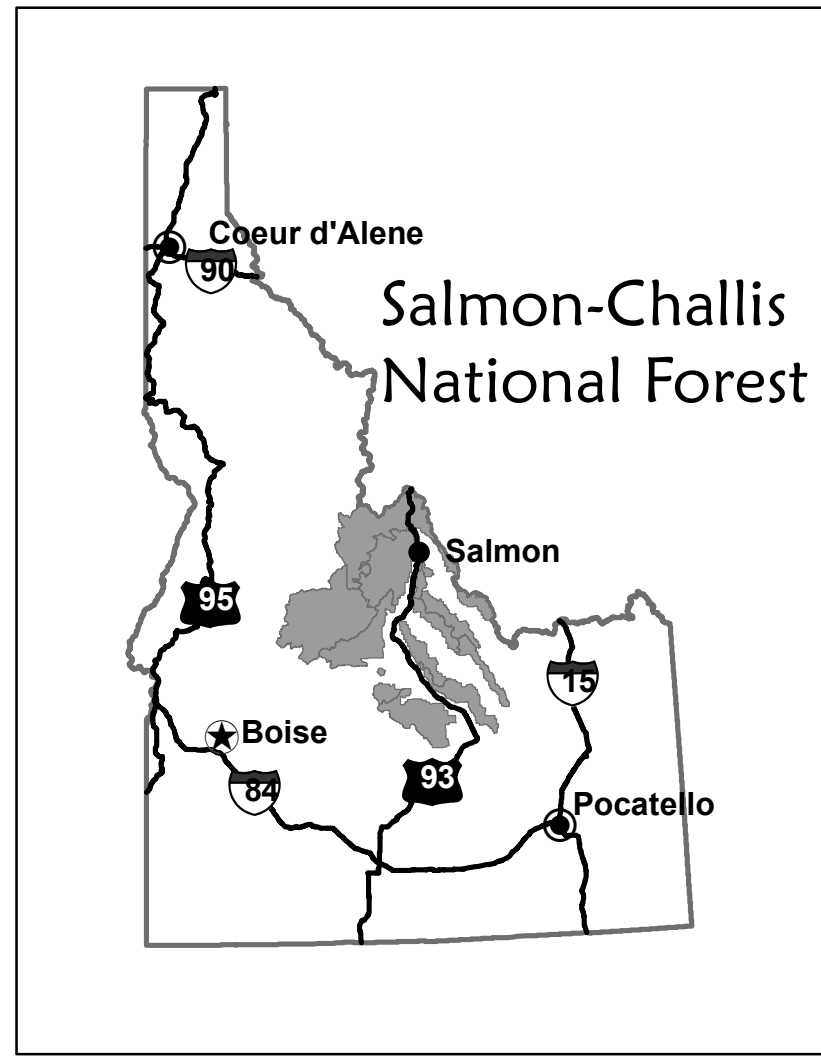


# Salmon-Challis National Forest Lost River Ranger District Travel Plan Alternative 0 August 2009



## Legend LR-0

### Transportation Routes

- Road Open to All Vehicles Yearlong
- Road Open to All Vehicles Seasonal
- Other Public Roads
- Trail Open to OHVs
- Trail Open to OHVs Seasonal
- Trail Open to Vehicles 50" or Less Yearlong
- Trail Open to Vehicles 50" or Less Seasonal
- Trail Open to Motorcycles Yearlong
- Trail Open to Motorcycles Seasonal
- Dispersed Camping Allowed

### Other Map Features

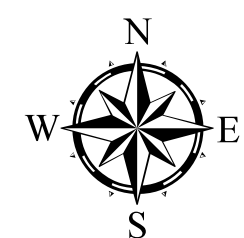
- Communities
- Non-Forest Service Land
- Frank Church -- River of No Return Wilderness Area
- Roadless Areas
- Ranger District Boundaries
- Research Natural Areas
- Proposed Wilderness Areas
- Areas Open to Cross Country Travel

### Forest Service Offices

- Supervisor's Office
- Ranger Station

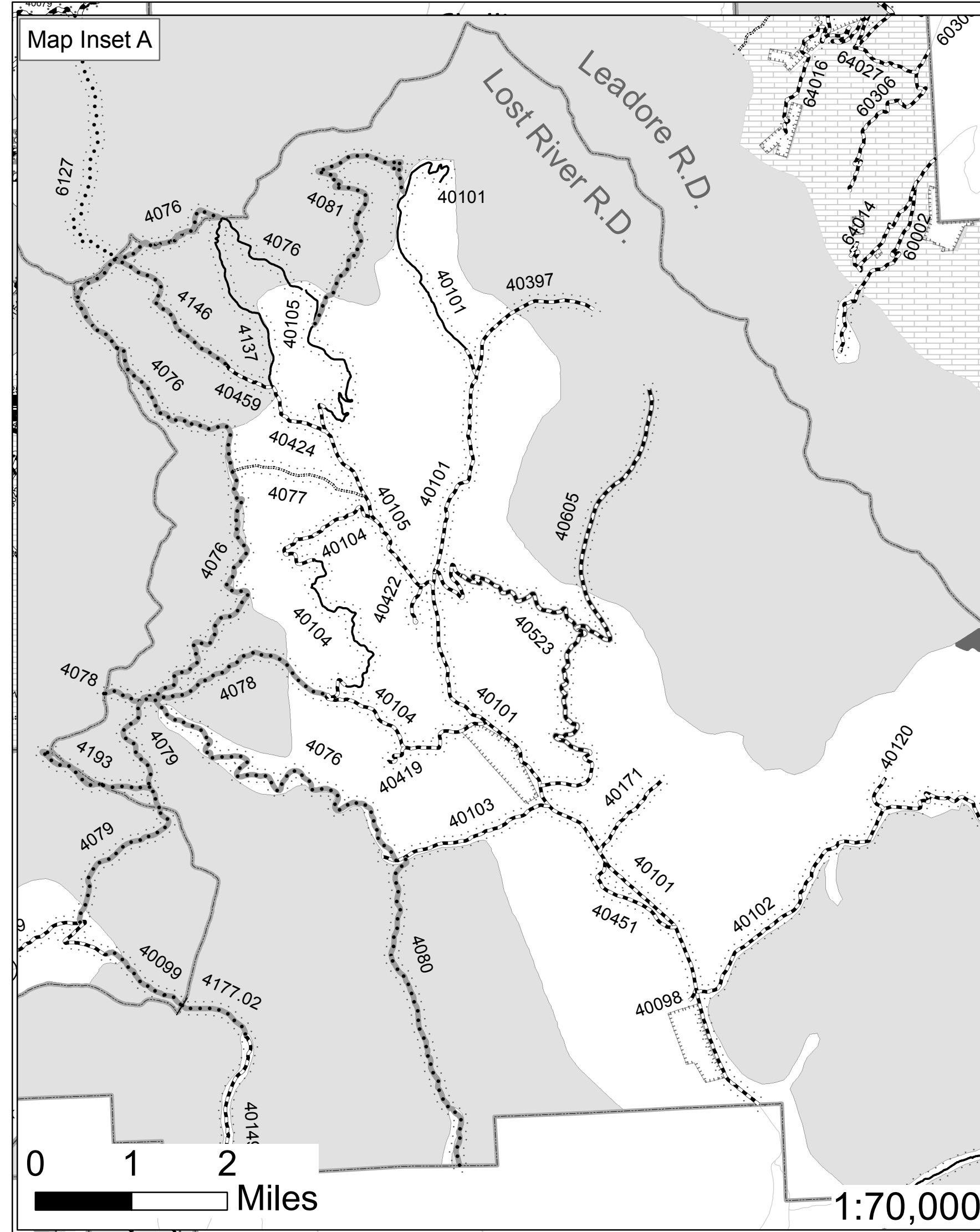
### Recreation Sites

- Campground
- Picnic Area
- Group Campground
- Motorized Trailhead

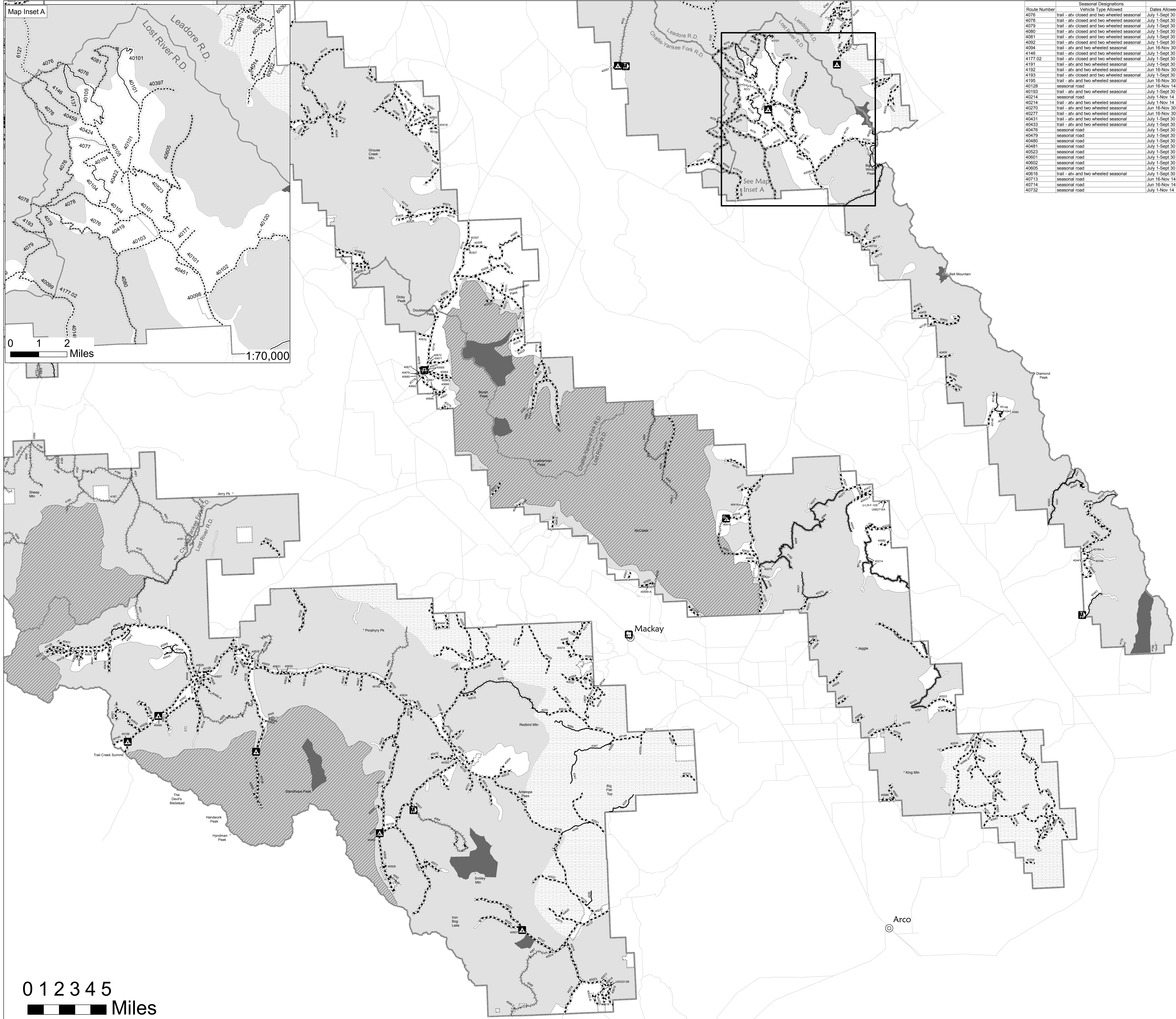


This map was produced on the ArcGIS 9.2 platform by the USDA-Forest Service, Salmon - Challis National Forest. The Forest Service uses the most current and complete data available. GIS data and product accuracy may vary, data may be developed from sources of differing map accuracy, accurate only at certain scales, based on modeling or interpretation, incomplete while being revised, etc. Using GIS products for purposes other than those intended for which they were created may yield inaccurate or misleading results. This data was released on July 31, 2009.

1:126,720



0 1 2 Miles  
1:70,000



| Route Number | Seasonal Designations                       | Vehicle Type Allowed | Dates Allowed  |
|--------------|---|----------------------|----------------|
| 4076         | trail - atv closed and two wheeled seasonal | atv                  | July 1-Sept 30 |
| 4078         | trail - atv closed and two wheeled seasonal | atv                  | July 1-Sept 30 |
| 4079         | trail - atv closed and two wheeled seasonal | atv                  | July 1-Sept 30 |
| 4080         | trail - atv closed and two wheeled seasonal | atv                  | July 1-Sept 30 |
| 4081         | trail - atv closed and two wheeled seasonal | atv                  | July 1-Sept 30 |
| 4092         | trail - atv closed and two wheeled seasonal | atv                  | July 1-Sept 30 |
| 4094         | trail - atv and two wheeled seasonal        | atv                  | Jun 16-Nov 30  |
| 4146         | trail - atv closed and two wheeled seasonal | atv                  | July 1-Sept 30 |
| 4177.02      | trail - atv closed and two wheeled seasonal | atv                  | July 1-Sept 30 |
| 4191         | trail - atv and two wheeled seasonal        | atv                  | July 1-Sept 30 |
| 4192         | trail - atv and two wheeled seasonal        | atv                  | Jun 16-Nov 30  |
| 4193         | trail - atv closed and two wheeled seasonal | atv                  | July 1-Sept 30 |
| 4195         | trail - atv and two wheeled seasonal        | atv                  | Jun 16-Nov 30  |
| 40129        | seasonal road                               |                      | Jun 16-Nov 14  |
| 40193        | trail - atv and two wheeled seasonal        | atv                  | July 1-Sept 30 |
| 40214        | seasonal road                               |                      | July 1-Nov 14  |
| 40270        | trail - atv and two wheeled seasonal        | atv                  | Jun 16-Nov 30  |
| 40277        | trail - atv and two wheeled seasonal        | atv                  | Jun 16-Nov 30  |
| 40431        | trail - atv and two wheeled seasonal        | atv                  | July 1-Sept 30 |
| 40433        | trail - atv and two wheeled seasonal        | atv                  | July 1-Sept 30 |
| 40476        | seasonal road                               |                      | July 1-Sept 30 |
| 40479        | seasonal road                               |                      | July 1-Sept 30 |
| 40480        | seasonal road                               |                      | July 1-Sept 30 |
| 40481        | seasonal road                               |                      | July 1-Sept 30 |
| 40523        | seasonal road                               |                      | July 1-Sept 30 |
| 40901        | seasonal road                               |                      | July 1-Sept 30 |
| 40602        | seasonal road                               |                      | July 1-Sept 30 |
| 40605        | seasonal road                               |                      | July 1-Sept 30 |
| 40616        | trail - atv and two wheeled seasonal        | atv                  | July 1-Sept 30 |
| 40713        | seasonal road                               |                      | Jun 16-Nov 14  |
| 40714        | seasonal road                               |                      | Jun 16-Nov 14  |
| 40732        | seasonal road                               |                      | July 1-Nov 14  |

0 1 2 3 4 5 Miles