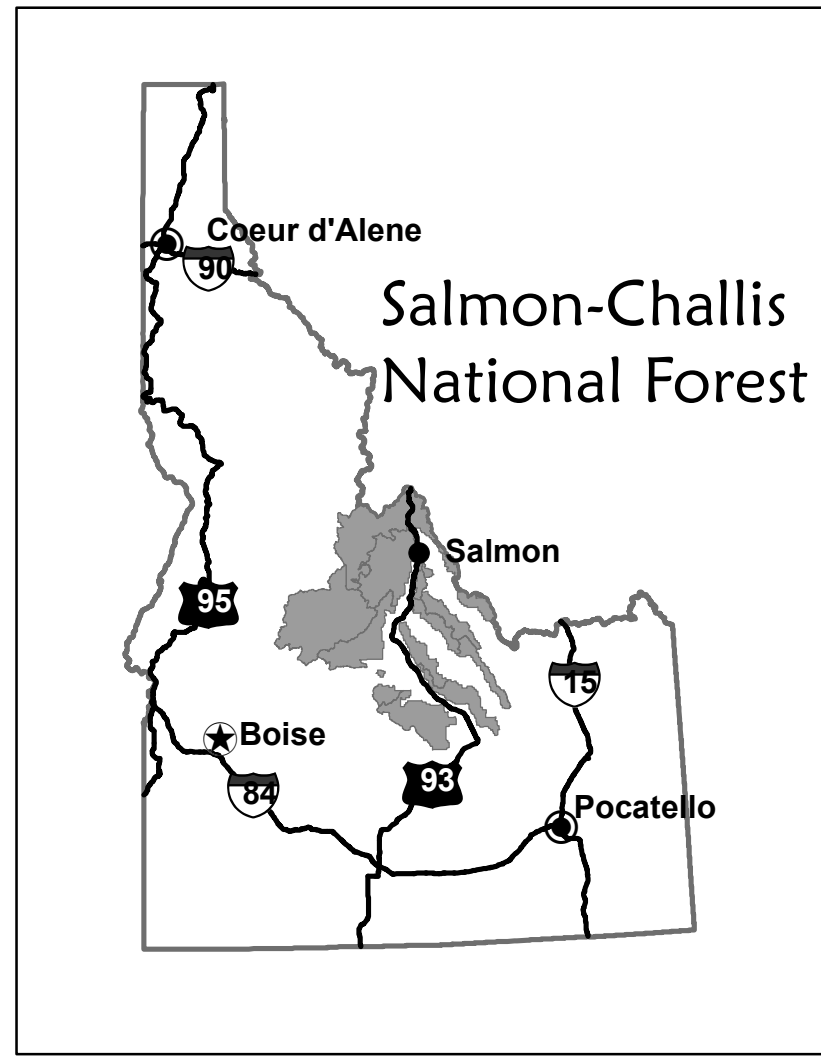


Salmon-Challis National Forest
 Lost River Ranger District
 Travel Plan
 Alternative 4
 August 2009



Legend
 LR-4

Transportation Routes

- Road Open to All Vehicles Yearlong
- Road Open to All Vehicles Seasonal
- Other Public Roads
- Trail Open to OHVs
- Trail Open to OHVs Seasonal
- Trail Open to Vehicles 50" or Less Yearlong
- Trail Open to Vehicles 50" or Less Seasonal
- Trail Open to Motorcycles Yearlong
- Trail Open to Motorcycles Seasonal
- Dispersed Camping Allowed

Other Map Features

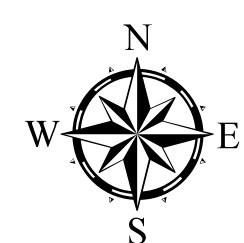
- ⊙ Communities
- ▭ Non-Forest Service Land
- ▨ Frank Church -- River of No Return Wilderness Area
- ▭ Roadless Areas
- ▭ Ranger District Boundaries
- ▨ Research Natural Areas
- ▨ Proposed Wilderness Areas

Forest Service Offices

- 🏠 Supervisor's Office
- 🏠 Ranger Station

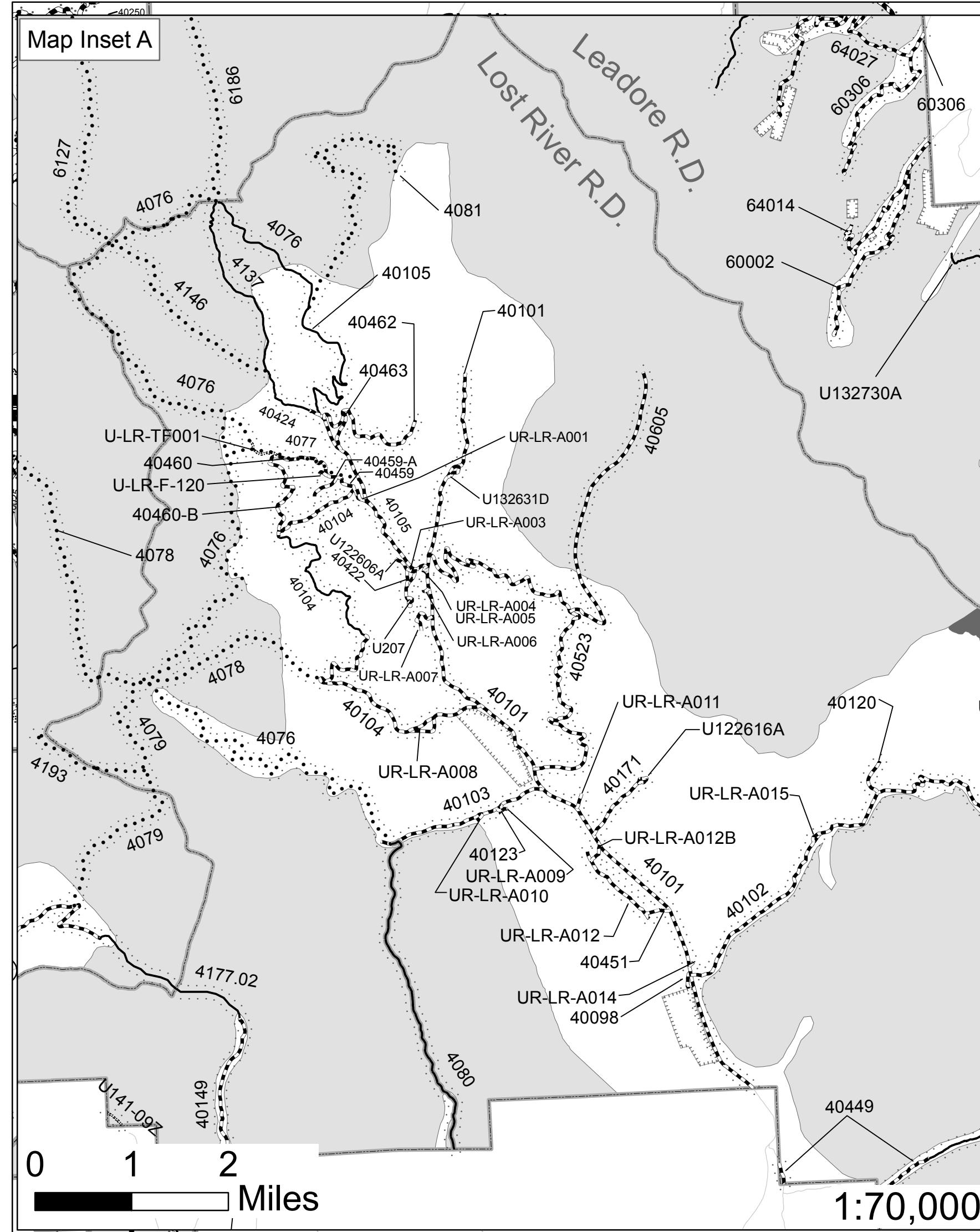
Recreation Sites

- 🏕 Campground
- 🏖 Picnic Area
- 🏕 Group Campground
- 🏍 Motorized Trailhead

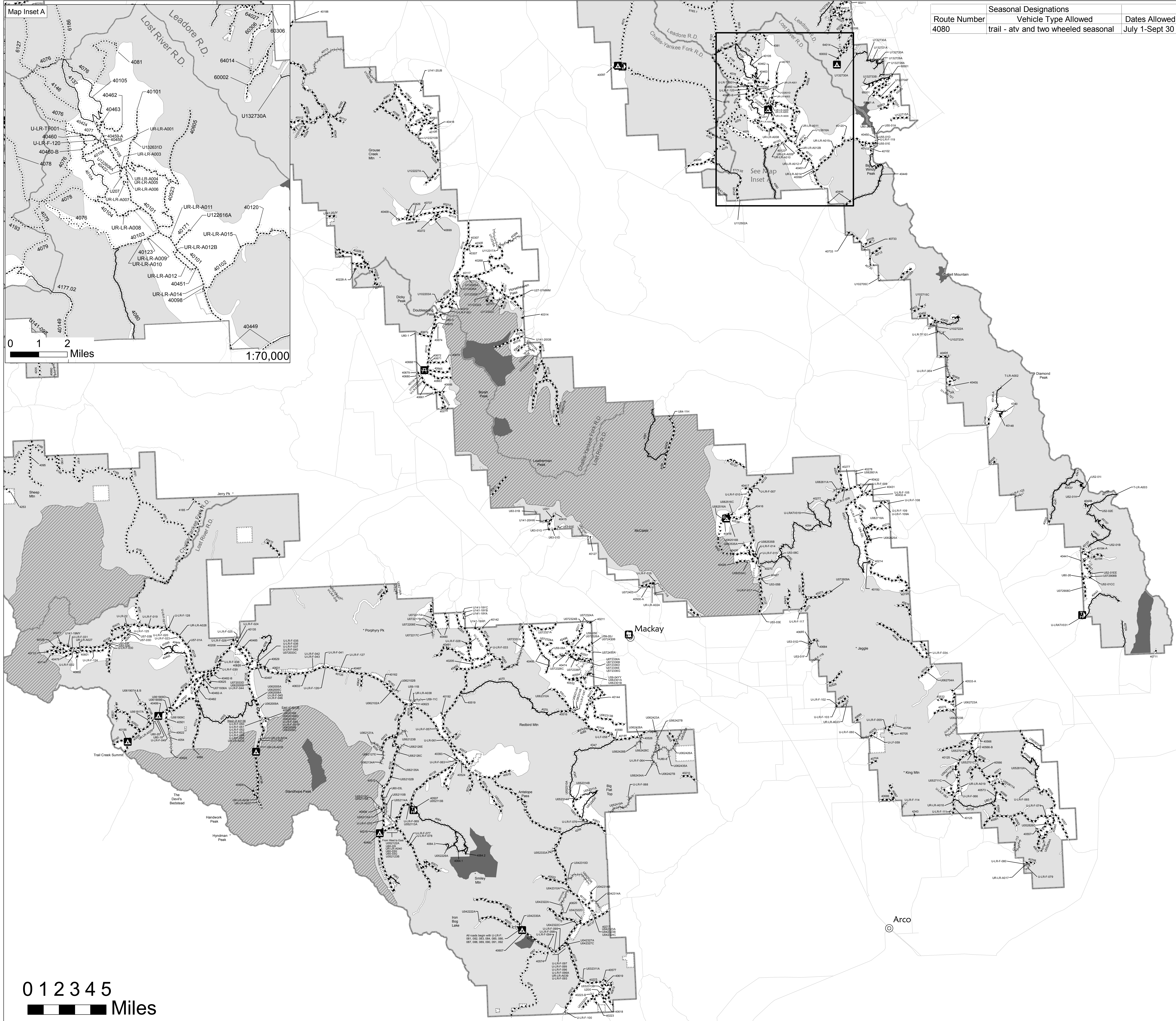


This map was produced on the ArcGIS 9.2 platform by the USDA-Forest Service, Salmon - Challis National Forest. The Forest Service uses the most current and complete data available. GIS data and product accuracy may vary, data may be developed from sources of differing map accuracy, accurate only at certain scales, based on modeling or interpretation, incomplete while being revised, etc. Using GIS products for purposes other than those intended for which they were created may yield inaccurate or misleading results. This data was released on July 31, 2009.

1:126,720



0 1 2 Miles
 1:70,000



Route Number	Seasonal Designations	
	Vehicle Type Allowed	Dates Allowed
4080	trail - atv and two wheeled seasonal	July 1-Sept 30

0 1 2 3 4 5 Miles