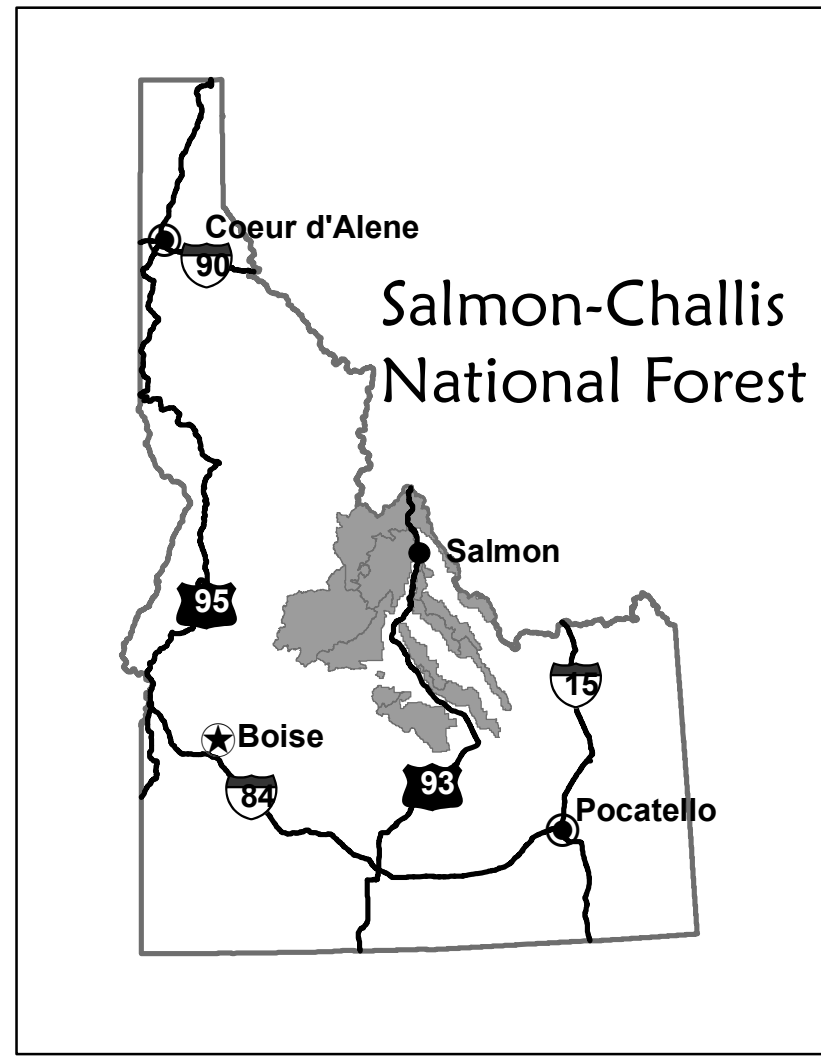


Salmon-Challis National Forest
Lost River Ranger District
Travel Plan
Alternative 3
August 2009



Legend
LR-3

Transportation Routes

- Road Open to All Vehicles Yearlong
- Road Open to All Vehicles Seasonal
- Other Public Roads
- Trail Open to OHVs
- Trail Open to OHVs Seasonal
- Trail Open to Vehicles 50" or Less Yearlong
- Trail Open to Vehicles 50" or Less Seasonal
- Trail Open to Motorcycles Yearlong
- Trail Open to Motorcycles Seasonal
- Dispersed Camping Allowed

Other Map Features

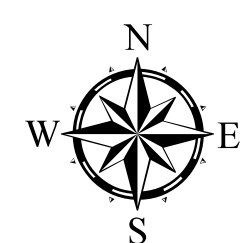
- Communities
- Non-Forest Service Land
- Frank Church -- River of No Return Wilderness Area
- Roadless Areas
- Ranger District Boundaries
- Research Natural Areas
- Proposed Wilderness Areas

Forest Service Offices

- Supervisor's Office
- Ranger Station

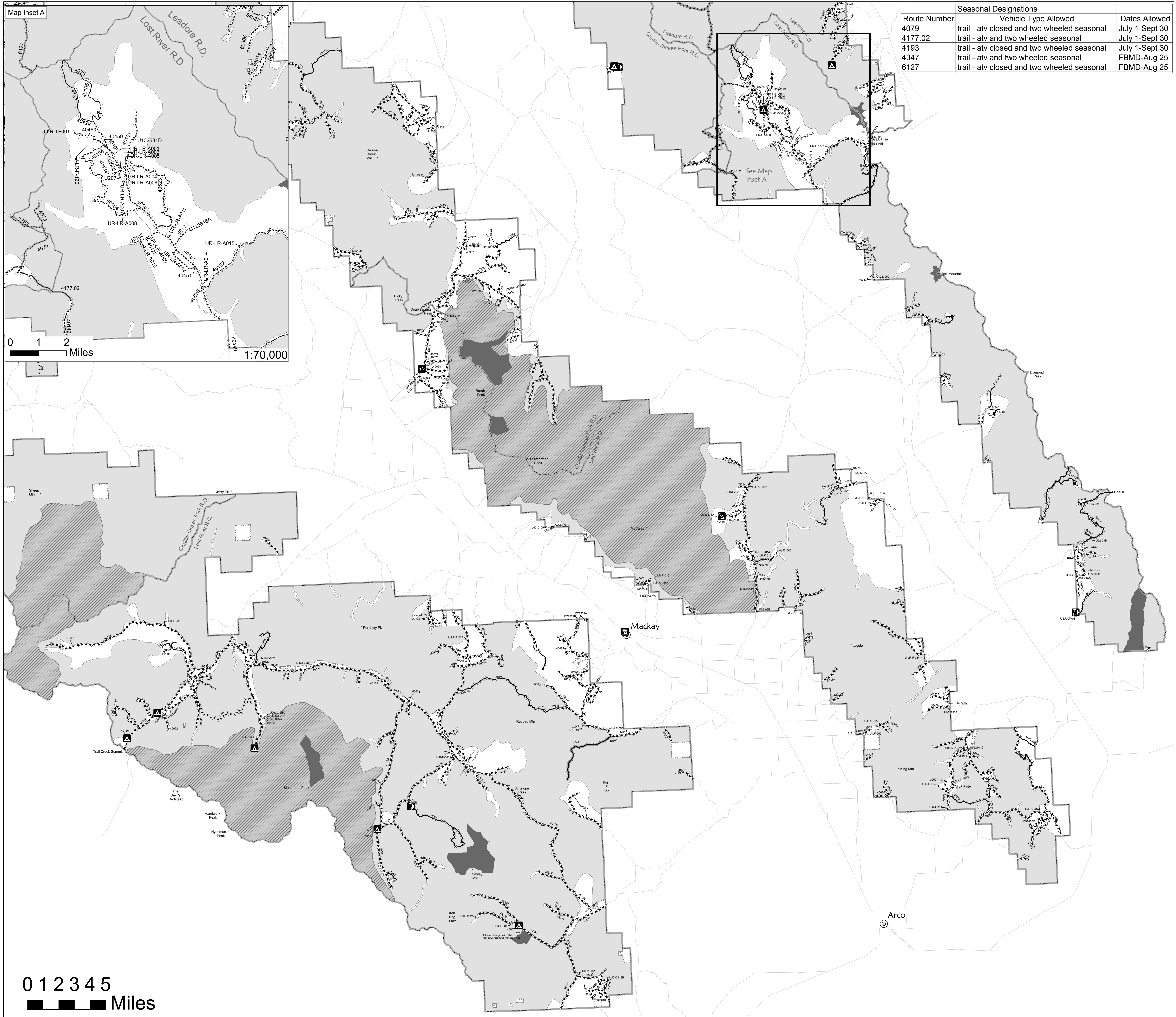
Recreation Sites

- Campground
- Picnic Area
- Group Campground
- Motorized Trailhead



This map was produced on the ArcGIS 9.2 platform by the USDA-Forest Service, Salmon - Challis National Forest. The Forest Service uses the most current and complete data available. GIS data and product accuracy may vary, data may be developed from sources of differing map accuracy, accurate only at certain scales, based on modeling or interpretation, incomplete while being revised, etc. Using GIS products for purposes other than those intended for which they were created may yield inaccurate or misleading results. This data was released on July 31, 2009.

1:126,720



Route Number	Seasonal Designations	Vehicle Type Allowed	Dates Allowed
4079	trail - atv closed and two wheeled seasonal		July 1-Sept 30
4177.02	trail - atv and two wheeled seasonal		July 1-Sept 30
4193	trail - atv closed and two wheeled seasonal		July 1-Sept 30
4347	trail - atv and two wheeled seasonal		FBMD-Aug 25
6127	trail - atv closed and two wheeled seasonal		FBMD-Aug 25

0 1 2 3 4 5
Miles