



2025 CHRISTMAS TREE PERMIT

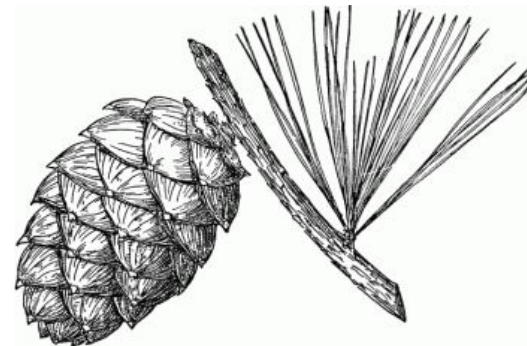
USDA Forest Service
SAWTOOTH NATIONAL FOREST

PERMIT TERMS AND CONDITIONS

1. This permit authorizes the permittee to cut one Christmas tree, up to twenty feet in height, on National Forest System Lands within the Sawtooth National Forest.
2. Areas closed to Christmas tree cutting include:
 - All Wilderness Areas
 - Within 200 feet of campgrounds, organization camps, summer homes, and Forest Service Facilities
 - Within 150 feet of lakes, rivers, streams, and wetlands on the Ketchum Ranger District and Sawtooth NRA
 - Within 300 feet of lakes, rivers, streams, and wetlands on the Fairfield and Minidoka Ranger District
 - All State and private land within the National Forest boundary
 - Other areas as designated by the Forest Service – see permit map
3. Areas closed to Christmas tree cutting are displayed on the permit map.
4. Do not drag trees across groomed cross country ski and snowmobile trails.
5. Winter recreation motorized and non-motorized travel restrictions apply.
6. Tree tag must be attached to the tree when cut and placed so it will be visible while transporting the tree.
7. Permit and tag must be in possession of permittee when cutting Christmas tree.
8. Stumps must be cut no higher than 8 inches above the soil.
9. Cutting only the top of a taller tree is prohibited. All parts of the tree must be removed.
10. Do not cut whitebark pine. Whitebark pine has five needles in a bunch and grows at high elevations.

The permit maps are available on the Sawtooth National Forest website and on Recreation.gov. It is also available for download through Avenza Maps. Avenza Maps is an app downloadable to your smartphone. You can use Avenza Maps with your phone’s GPS to access your location even outside of cell service. Your location will display on the map showing if cutting is authorized in your current location. Scan the QR Codes below to access the maps in the Avenza Store.

To the right is a picture of a whitebark pine cone and needles. Notice that the needles grow in bunches of five. You can find these trees at high elevations on the Ketchum and Fairfield Ranger Districts and the Sawtooth NRA.

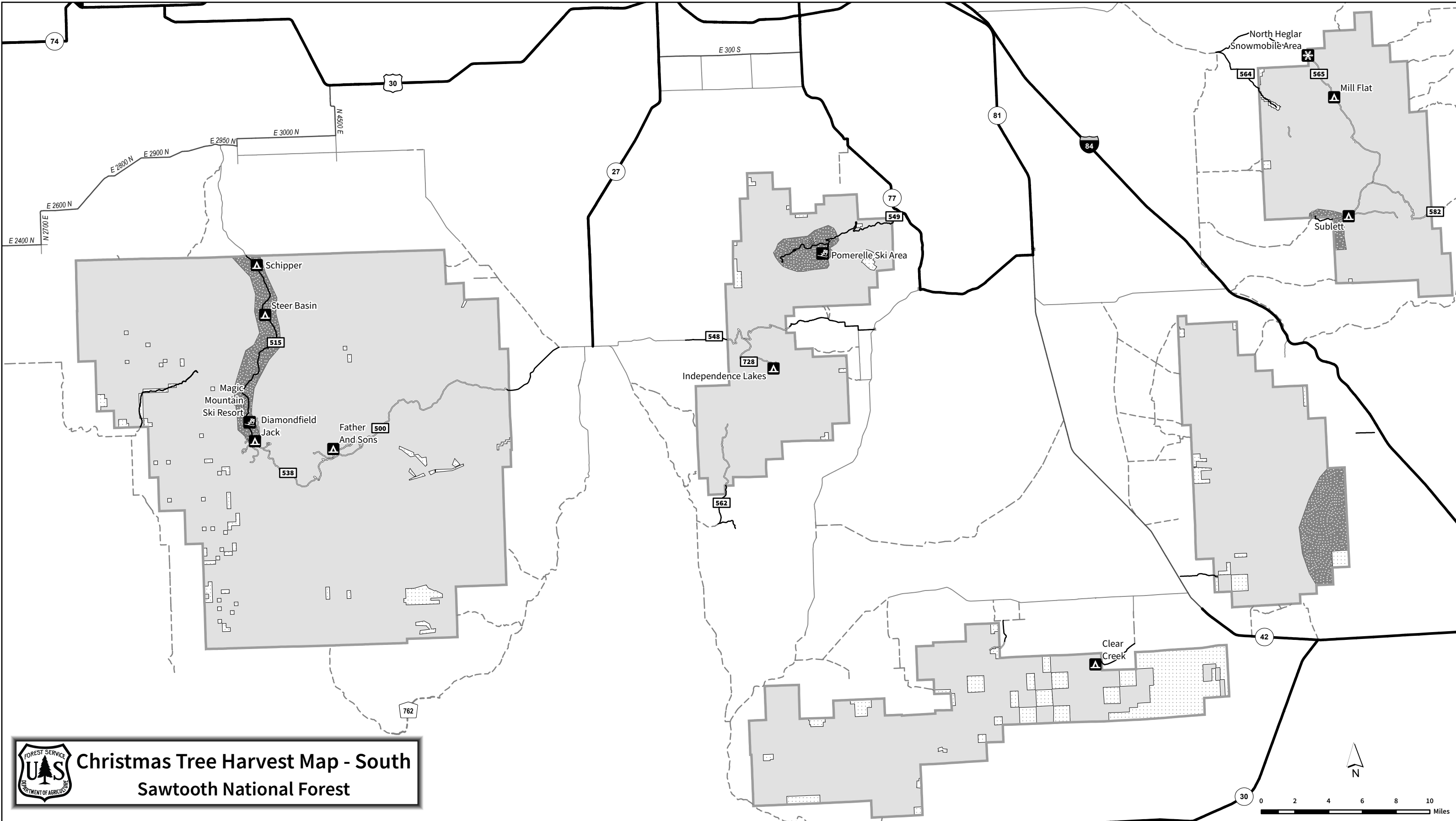


Fairfield and Ketchum
Ranger Districts and
Sawtooth NRA Avenza
Map



Minidoka Ranger District
Avenza Map





FOREST SERVICE
US
 DEPARTMENT OF AGRICULTURE

Christmas Tree Harvest Map - South Sawtooth National Forest

- | | | | | |
|--|------------------------|---------------------------------|----------------------|---------------------|
| CHRISTMAS TREE HARVEST PROHIBITED | Campground | Private Property or Non-FS Land | USFS Road | County Road (Dirt) |
| Ski Area - Alpine | US Forest Service Land | Public Road in Forest | Highway | Secondary Dirt Road |
| Snowpark | Sawtooth NF Boundary | Paved Road | Secondary Paved Road | |

The Forest roads depicted on the map are those open after 11/30 whose operational maintenance level are "Level 3 - Suitable for Passenger Cars." For more information about seasonal road and trail closures, please see the Minidoka Ranger District Motor Vehicle Use Map. For more information on winter recreation, please see Sawtooth National Forest Winter Visitor Map.