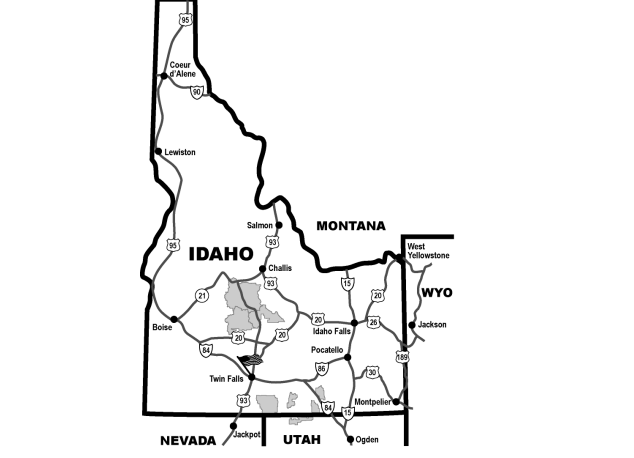


# Motor Vehicle Use Map

Eastern Divisions  
Minidoka Ranger District  
Sawtooth National Forest

## VICINITY MAP



## INFORMATION SOURCES

MINIDOKA RANGER DISTRICT  
2306 Hiland Ave.  
Burley, Idaho 83318  
(208) 678-0430

FOREST HEADQUARTERS  
Sawtooth National Forest  
370 American Ave  
Jerome, ID 83338  
(208) 423-7500

REPORT ALL WILDFIRES  
1-800-974-2373  
Cell phone: Dial: # FIRE

In Case of Emergency  
Dial 9-1-1



ALWAYS REMEMBER TO RESPECT PRIVATE LAND! PROTECT YOUR PRIVILEGE. STAY ON DESIGNATED ROADS AND TRAILS AND IN DESIGNATED AREAS.

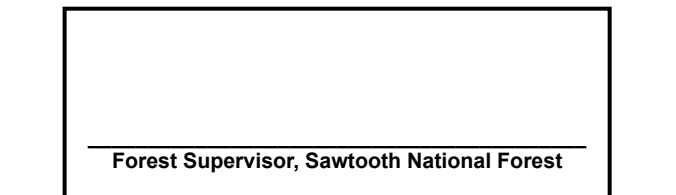
Read and understand this map in its entirety. If you have questions, please contact the Minidoka Ranger District for clarification.

As a motor vehicle operator on a National Forest System road, trail, or area you must comply with this map, as well as all Federal, State, and local laws and regulations. Compliance with these rules is your responsibility.

USDA is an equal opportunity provider and employer.

## PURPOSE AND CONTENTS OF THIS MAP

The designations shown on this motor vehicle use map (MVUM) were made by the responsible official pursuant to 36 CFR 212.51, are effective as of the date on the front cover of this MVUM, and will remain in effect until superseded by next year's MVUM.



It is the responsibility of the user to acquire the current MVUM. This MVUM shows the National Forest System roads, National Forest System trails, and the areas on National Forest System lands in the Minidoka Ranger District that are designated for motor vehicle use pursuant to 36 CFR 212.51. This MVUM also identifies the vehicle classes allowed on each route and in each area; and any seasonal restrictions that apply on those routes and in those areas.

Designation of a road, trail, or area for motor vehicle use by a particular class of vehicle under 36 CFR 212.51 should not be interpreted as encouraging or inviting use or implying that the road, trail, or area is passable, actively maintained, or safe for travel. Motor vehicle designations include parking along designated routes and at facilities associated with designated routes when it is safe to do so and when not causing damage to National Forest System resources. Seasonal weather conditions and natural events may render designated roads and trails impassable for extended periods. Designated areas may contain dangerous or impassable terrain. Many designated roads and trails may be passable only by high-clearance vehicles or four-wheel-drive vehicles. Maintenance of designated roads and trails will depend on available resources, and many may receive little maintenance.

This motor vehicle use map identifies those roads, trails, and areas designated for the motor vehicle use under 36 CFR 212.51 for the purpose of enforcing the prohibition at 36 CFR 261.13. This is a limited purpose. The other public roads are shown for information and navigation purposes only and are not subject to designation under the Forest Service travel management regulation.

These designations apply only to National Forest System roads, National Forest System trails, and areas on National Forest System lands.

### Legend

- Roads Open to Highway Legal Vehicles
- Trails Open to All Vehicles
- Trails Open to Vehicles 50' or Less in Width
- Trails Open to Motorcycles Only
- Seasonal Designation (See Table)
- Dispersed Camping, Both Sides
- Interstate
- Highways, U.S. State
- Other Public Roads
- FS Campground
- Motorized Trailhead
- Hiking Trailhead
- Information Site
- Peaks
- Forest or Unit Boundary
- National Forest System Lands
- Non-National Forest System Lands within the National Forest
- Political Boundary
- Township and Range Lines
- Section Lines
- Lakes and Rivers

North American Datum of 1983 (NAD 83)  
Universal Transverse Mercator, zone 11N

Scan this code to get a pdf map in the Avenza GPS app

## PROHIBITIONS

It is prohibited to possess or operate a motor vehicle on National Forest System lands on the Minidoka Ranger District other than in accordance with these designations (36 CFR 261.13)

Violators of 36 CFR 261.13 are subject to a fine of up to \$5,000, imprisonment for up to 6 months, or both (18 U.S.C. 3671(a)). This prohibition applies regardless of the presence or absence of signs.

This map does not display nonmotorized uses, over-snow uses, or other facilities and attractions on the Minidoka Ranger District. Obtain forest visitor information from the local national forest office.

Designated roads, trails and areas may also be subject to temporary, emergency closures. As a visitor, you must comply with signs notifying you of such restrictions. A national forest may issue an order to close a road, trail or area on a temporary basis to protect the life, health, or safety of forest visitors or the natural or cultural resources in these areas. Such a temporary and/or emergency closures are consistent with the Travel Management Rule (36 CFR 212.52 (b), 36 CFR 261 subpart B).

The designation "road or trail open to all motor vehicles" does not supersede State traffic law.

## EXPLANATION OF LEGEND ITEMS

Roads Open to Highway Legal Vehicles Only:  
These roads are open only to motor vehicles licensed under State law for general operation on all public roads within the state.

Roads Open to All Vehicles:  
These roads are open to all motor vehicles, including smaller off-highway vehicles that may not be licensed for highway use (but not to oversized or overweight vehicles under State traffic law).

Trails Open to All Vehicles:  
These trails are open to all motor vehicles, including both highway legal and nonhighway legal vehicles.

Trails Open to Vehicles 50 inches or Less in Width:  
These trails are open only to motor vehicles less than 50 inches in width at the widest point on the vehicle.

Trails Open to Motorcycles Only:  
These trails are open only to motorcycles. Sidecars are not permitted.

Seasonal Designation:  
This symbol, used in conjunction with one of the other road or trail symbols, indicates that the road or trail is open only during certain portions of the year. Refer to Seasonal Designation Table for further instructions.

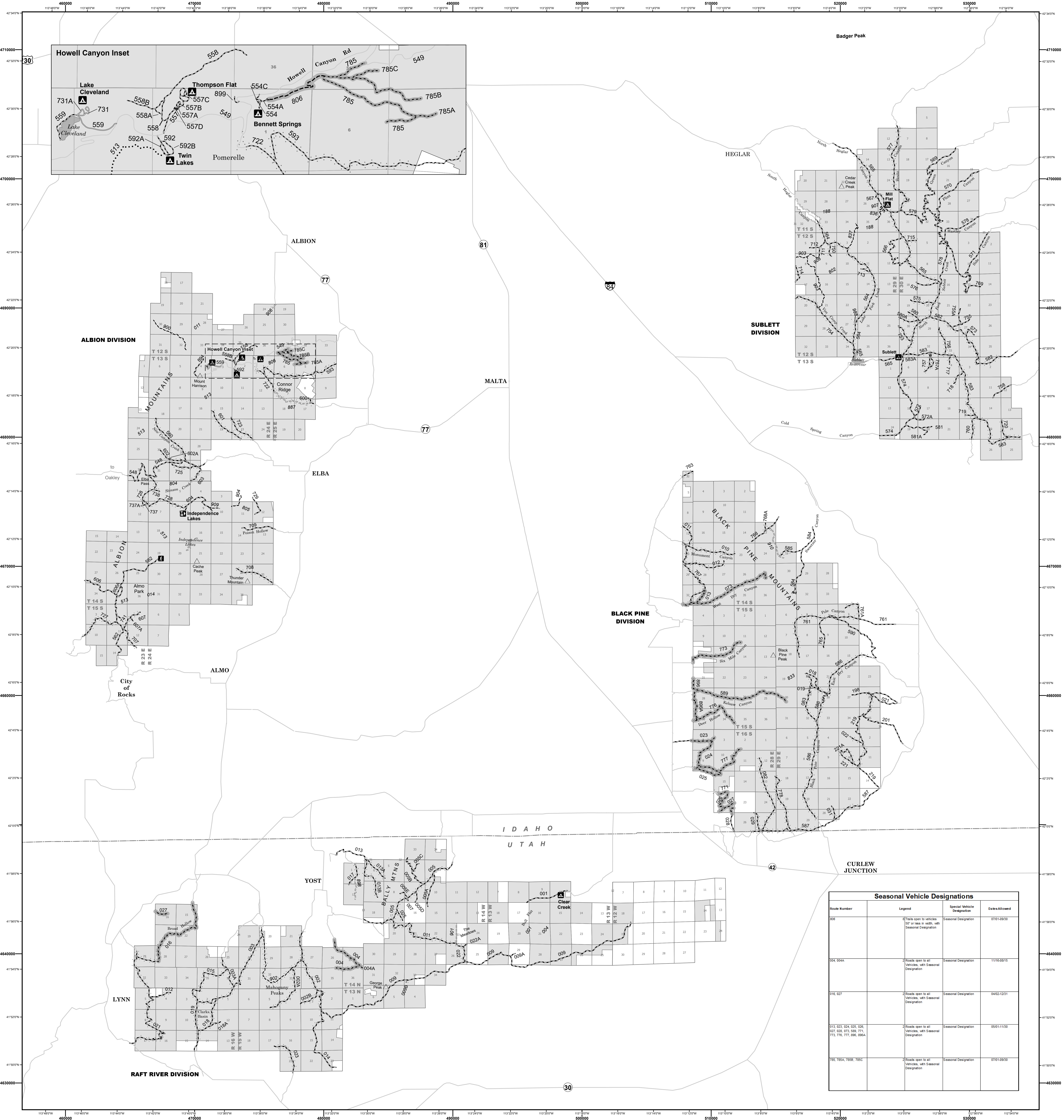
Dispersed Camping:  
Dispersed Camping, Both Sides  
This symbol is used along with a designated road or trail to indicate limited cross-county motor vehicle use within a specific distance of that route, solely for the purpose of dispersed camping. The dots indicate where this activity is permitted. They may be on the left, right, or both sides of the route.

Other Public Roads and Trails:  
Interstate  
Highways, U.S., State  
Other Public Roads  
These symbols are used to show routes the Forest Service does not have jurisdiction over and has not designated for motorized use. These symbols are part of the reference layers showing connections to towns and cities outside the forest boundary.

Motorized Trail Access:  
This symbol indicates a trailhead for access to a motorized route. Not all motorized routes have trailheads and those that do may range from primitive to developed.

## Trails Open to E-bikes

The Forest Service manages e-bikes as motor vehicles. Class 1, 2, and 3 e-bikes are allowed on roads designated for any classes of motor vehicles and where consistent with state laws regarding e-bike use on public roads. Class 1, 2, and 3 e-bikes are also allowed on trails open to all classes of motor vehicles, including motorcycles; and trails designated for those classes of e-bikes. Refer to the Seasonal and Special Vehicle Designation Table for roads and trails that have restrictions on the use of e-bikes.



Seasonal Vehicle Designations			
Route Number	Legend	Special Vehicle Designation	Data Allowed
006	Trails open to vehicles 50' or less in width, with Seasonal Designation	Seasonal Designation	07/01-09/30
004, 004A	Roads open to all vehicles, with Seasonal Designation	Seasonal Designation	11/01-02/15
016, 027	Roads open to all vehicles, with Seasonal Designation	Seasonal Designation	04/02-12/31
013, 021, 024, 025, 026, 027, 028, 015, 038, 771, 773, 776, 777, 896, 896A	Roads open to all vehicles, with Seasonal Designation	Seasonal Designation	05/01-11/30
785, 785A, 785B, 785C	Roads open to all vehicles, with Seasonal Designation	Seasonal Designation	07/01-09/30