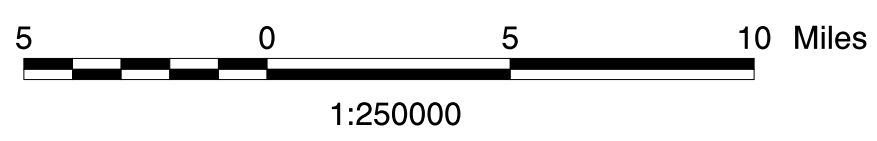
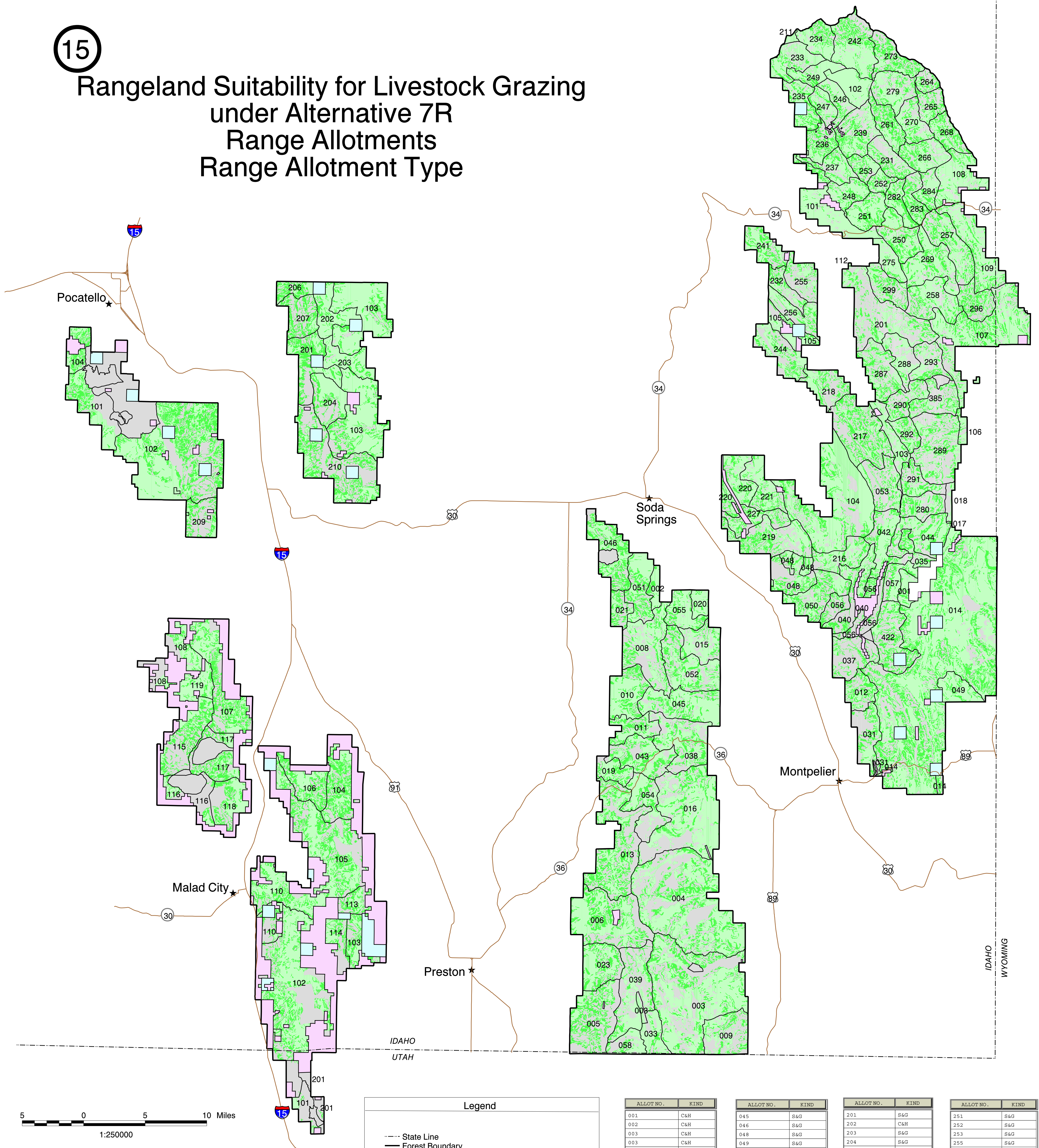


15

# Rangeland Suitability for Livestock Grazing under Alternative 7R Range Allotments Range Allotment Type



**Legend**

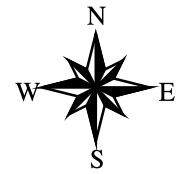
- State Line
- Forest Boundary
- Allotment Boundaries
- Suitability for Grazing Under Alternative 7
  - Light Green: Suitable for Cattle Grazing
  - Dark Green: Suitable for Sheep Grazing
- Grey: National Forest Land that is Not Suitable for Grazing
- White: Private Inholdings
- Blue: State Inholdings

ALLOT NO.	KIND	ALLOT NO.	KIND	ALLOT NO.	KIND	ALLOT NO.	KIND
001	C&H	045	S&G	201	S&G	251	S&G
002	C&H	046	S&G	202	C&H	252	S&G
003	C&H	048	S&G	203	S&G	253	S&G
003	C&H	049	S&G	204	S&G	255	S&G
004	C&H	050	S&G	206	S&G	256	S&G
005	C&H	051	S&G	207	S&G	257	S&G
006	C&H	052	S&G	209	S&G	258	S&G
008	C&H	053	S&G	210	S&G	261	S&G
009	C&H	054	S&G	211	(Targhee)	264	S&G
010	C&H	055	S&G	216	S&G	265	S&G
011	C&H	056	S&G	217	S&G	266	S&G
012	C&H	057	S&G	218	S&G	268	S&G
013	C&H	058	S&G	219	S&G	269	S&G
014	C&H	101	C&H	220	S&G	270	S&G
015	C&H	102	C&H	221	S&G	273	S&G
016	C&H	103	C&H	222	S&G	275	S&G
017	C&H	104	C&H	231	S&G	279	S&G
018	C&H	105	C&H	232	S&G	280	S&G
019	C&H	106	C&H	233	S&G	282	S&G
020	C&H	107	C&H	234	S&G	283	S&G
021	C&H	108	C&H	235	S&G	284	S&G
023	C&H	109	C&H	236	S&G	287	S&G
031	S&G	110	C&H	237	S&G	288	S&G
033	S&G	111	C&H	239	S&G	289	S&G
035	S&G	112	C&H	241	S&G	290	S&G
037	S&G	113	C&H	242	S&G	291	S&G
038	S&G	114	C&H	244	S&G	292	S&G
039	S&G	115	C&H	246	S&G	293	S&G
040	S&G	116	C&H	247	S&G	296	S&G
042	S&G	117	C&H	248	S&G	299	S&G
043	S&G	118	C&H	249	S&G	385	S&G
044	S&G	119	C&H	250	S&G	422	S&G

Disclaimer:  
This product is reproduced from geospatial information prepared by the U.S. Department of Agriculture, Forest Service. GIS data and product accuracy may vary. They may be developed from sources of differing accuracy, accurate only at certain scales, based on modeling or interpretation, incomplete while being created or revised, etc. Using GIS products for purposes other than those for which they were created, may yield inaccurate or misleading results. This information was released in February, 2003. The Forest Service reserves the right to correct, update, modify, or replace, GIS products without notification. For more information, contact: Caribou - Targhee National Forest, 1405 Hollipark Drive, Idaho Falls, ID 83401.



**Forest Plan Revision**  
Caribou - Targhee National Forest  
Caribou Zone  
Idaho, Wyoming and Utah  
**Intermountain Region**  
**USDA Forest Service**



**FINAL**  
**EIS**  
February 2003

C&H = Cattle and Horse Allotments, S&G = Sheep and Goat Allotments