

*UINTA-WASATCH-CACHE NATIONAL FOREST
EVANSTON-MOUNTAIN VIEW RANGER DISTRICT*

**STILLWATER ALLOTMENT
2025 ANNUAL OPERATING INSTRUCTIONS**

These Annual Operating Instructions are made part of your term grazing permit consistent with Part 1, Item 3 and Part 2, Item 8(a).

Authorized sheep on the Stillwater Allotment the 2025 grazing season are as follows:

<u>Permittee</u>	<u>Authorized Number</u>	<u>Season of Use</u>
Sims Sheep Co. LLC	1000 ewe/lamb	7/11 – 9/10

The following is the planned sequence of use for this year:

Order	Unit	No. of Days	Planned Dates
1 st	1	30	7/11 – 8/9
2 nd	3	6	8/10 – 8/15
3 rd	2	26	8/16 – 9/10

Any changes in the sequence of use must be approved first. Please contact Aimee Cameron, the Rangeland Management Specialist at (307) 782-6555 work or (385) 238-0030 cell.

If a need arises to vary from the number of days by more than 3 days, prior approval must be given first.

Pass lightly through Christmas Meadows.

Care needs to be taken not to bed the sheep in Christmas Meadows, at the trailhead, and on the recreation trail above the Christmas Meadows Campground. Please have your herders watch this area and keep the sheep off the trail as much as possible.

Bed your sheep one night in one area only. Multiple days use of the same bed ground is prohibited.

All camps are to be kept clean at all times. Pack out all garbage off of the National Forest; this includes any garbage that may have been left from previous years.

All camps are to be located away from trails, lakes, and other high use recreational areas.

Please notify Aimee 3-5 days in advance as to when you plan to put your sheep on the allotment.

An allotment map is enclosed; this map shows the allotment boundary, unit boundaries, and use dates. Please review it and make sure your herder understands the grazing plan well.

You are responsible for proper utilization of the forage by your sheep. Allowable utilization and ground cover standards are described on the attachment. If inspections reveal areas of over utilization or riparian damage, corrective action will be expected (which may mean taking your

sheep home early) and action may be taken against your permit. You are instructed to graze your sheep in a manner to minimize soil disturbance.

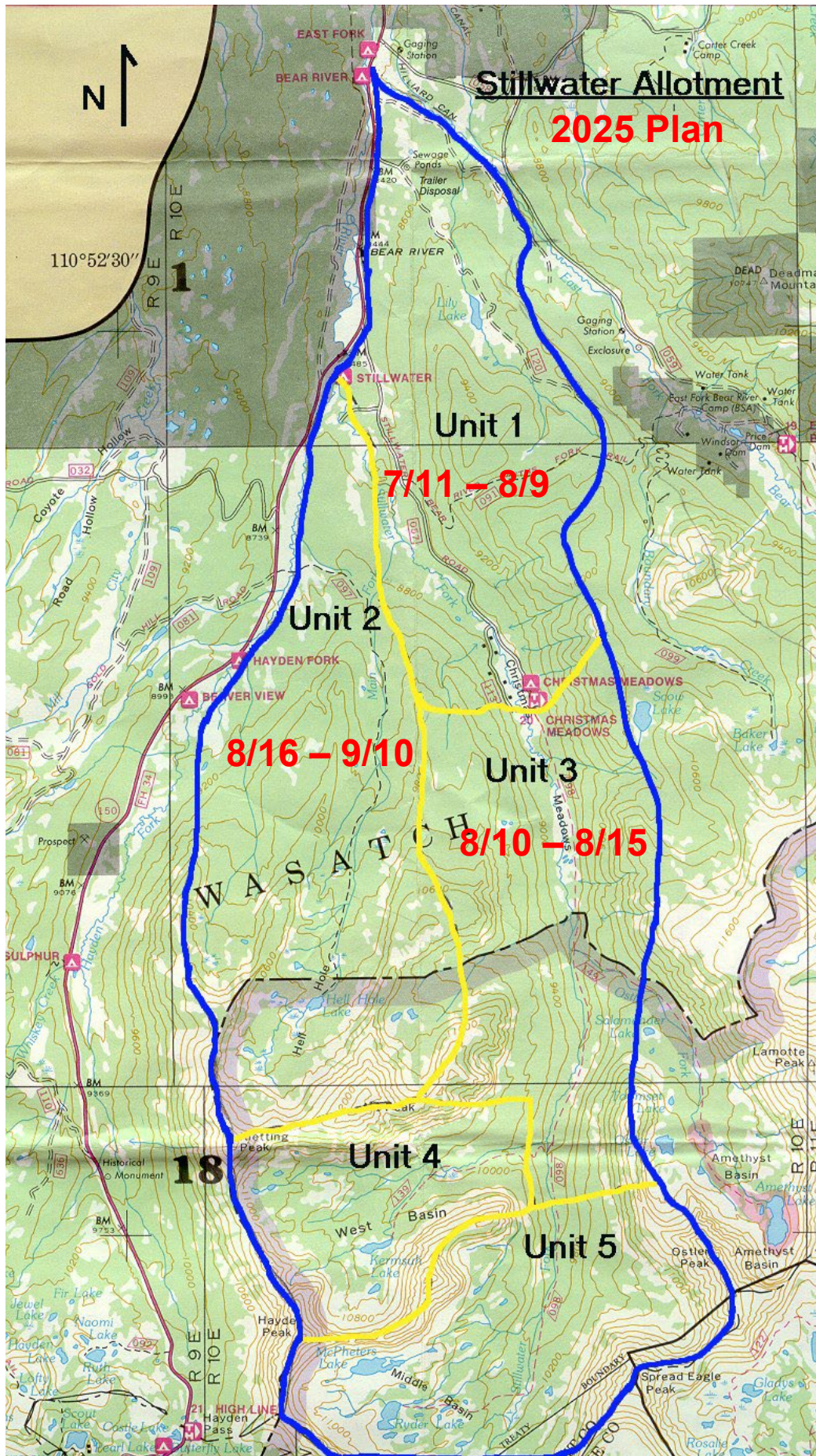
Equal utilization of the range is the objective. This requires herding and salting be properly conducted throughout the entire grazing season. **Rotate your salting areas during the grazing season and from year to year.** Place your salt in good forage producing areas where the sheep do not go by preference. Do not place your salt next to water, roads, trails, or in open meadows.

Every effort must be taken to completely remove sheep off the National Forest by the scheduled off date.

If there have been approved changes complete the actual use report and return it by November 30. If you have any questions or comments, please contact Aimee. Thanks for your cooperation in managing this allotment.



JUSTIN ROBINSON
District Ranger



*UINTA-WASATCH-CACHE NATIONAL FOREST
EVANSTON-MOUNTAIN VIEW RANGER DISTRICT*

**STILLWATER ALLOTMENT
2025 ACTUAL USE RECORD**

Permittee

Sims Sheep Co. LLC

Authorized Number

1000 ewe/lamb

Season of Use

7/11 – 9/10

Planned Use:

Unit	Enter Date	Leave Date	Days Planned
1	7/11	8/9	30
3	8/10	8/15	6
2	8/6	9/10	26

Actual Use:

Unit	Enter Date	Leave Date	Days Use
1			
3			
2			

Signature: _____ Date: _____
(Permittee: Sims Sheep Co., LLC)

Comments: *(Included needed range improvements; improvements maintained or visited; new noxious weeds locations; and ect.)*

Percent utilization of key grass or grass like vegetation, by vegetation type, for rangelands in satisfactory condition.

Vegetation Type	Condition	Percent Utilization Key Grass or Grass like
Upland and Aspen	Satisfactory	50
Crested Wheatgrass	Satisfactory	60
Riparian* Class I	Satisfactory	50
Riparian* Class II & III	Satisfactory	60

*Riparian, away from greenline

Maximum forage utilization standards (stubble height) for low to mid elevation *greenline* species in Class I, II, and III riparian areas in satisfactory condition are as follows: (Key species being grazed include water sedge, Nebraska sedge, and and/or wooly sedge.)

Greenline stubble height at the end of the growing season, by riparian class, for rangeland satisfactory condition.

Riparian Class	Condition	Greenline Stubble Height at End of Growing Season
Riparian Class I	Satisfactory	No Less Than 5"
Riparian Class II	Satisfactory	No Less Than 4"
Riparian Class III	Satisfactory	No Less Than 3"

For all rangelands, including big game winter range and riparian areas, no more than 50% of the current year's growth on woody vegetation to be browsed during one growth cycle (i.e., when use has reached 50% no additional livestock use).

As a tool to achieve rehabilitation of upland, aspen, and riparian communities away from the greenline that are not meeting or moving toward objectives (i.e. in unsatisfactory condition), maximum allowed forage utilization is 30-40 percent.

Livestock management activities to result in no less than 85% of potential ground cover for each vegetation cover type.

