

*UINTA-WASATCH-CACHE NATIONAL FOREST  
EVANSTON-MOUNTAIN VIEW RANGER DISTRICT*

**BURNT FORK ALLOTMENT (West Side)  
2026 ANNUAL OPERATING INSTRUCTIONS**

These Annual Operating Instructions are made part of your term grazing permit consistent with Part 1, Item 3 and Part 2, Item 8(a).

Authorized cattle on the Burnt Fork Allotment the 2026 grazing season are as follows:

<u>Permittee</u>	<u>Authorized Number</u>	<u>Season of Use</u>
7B Livestock LLC	100 cow/calf	6/26 – 9/30

The following is the planned sequence of use for this year on the west side:

<b>Order</b>	<b>Unit</b>	<b>No. of Days</b>	<b>Planned Dates</b>
1 <sup>st</sup>	Gregory Basin	15	6/26 – 7/10
2 <sup>nd</sup>	Burnt Fork Creek	44	7/11 – 8/23
3 <sup>th</sup>	Burnt Flat	38	8/24 – 9/30

Cattle must be tagged with a red Forest Service ear tag prior to entering the National Forest.

Any changes in the sequence of use must be approved first. Please contact Aimee Cameron, the Rangeland Management Specialist at (307) 782-6555 work or (385) 238-0030 cell.

If a need arises to vary from the number of days by more than 3 days, prior approval must be given first.

Please notify Aimee 3-5 days in advance as to when you plan to put your cattle on the allotment.

All fences are to be maintained 10 days prior to your schedule on date.

An allotment map is enclosed; this map shows the allotment boundary and unit boundaries. Please review it.

You are responsible for proper utilization of the forage by your cattle. Allowable utilization is shown on the attachment. If inspections reveal areas of over utilization or riparian damage, corrective action will be expected (which may mean taking your cattle home early) and action may be taken against your permit.

Equal utilization of the range is the objective. This requires riding and salting be properly conducted throughout the entire grazing season. Rotate your salting areas during the grazing season and from year to year. Place your salt in good forage producing areas where the cattle do not go by preference. Do not place your salt next to water, roads, trails, or in open meadows. Cattle need to be kept in their appropriate units, properly distributed within those units, and moved from unit to unit as needed. It is especially important cattle be kept in the unit they are supposed to be in and that an even distribution of your cattle be maintained while in an unit,

since any area reaching proper utilization means it is time to move into the next scheduled unit or to come home.

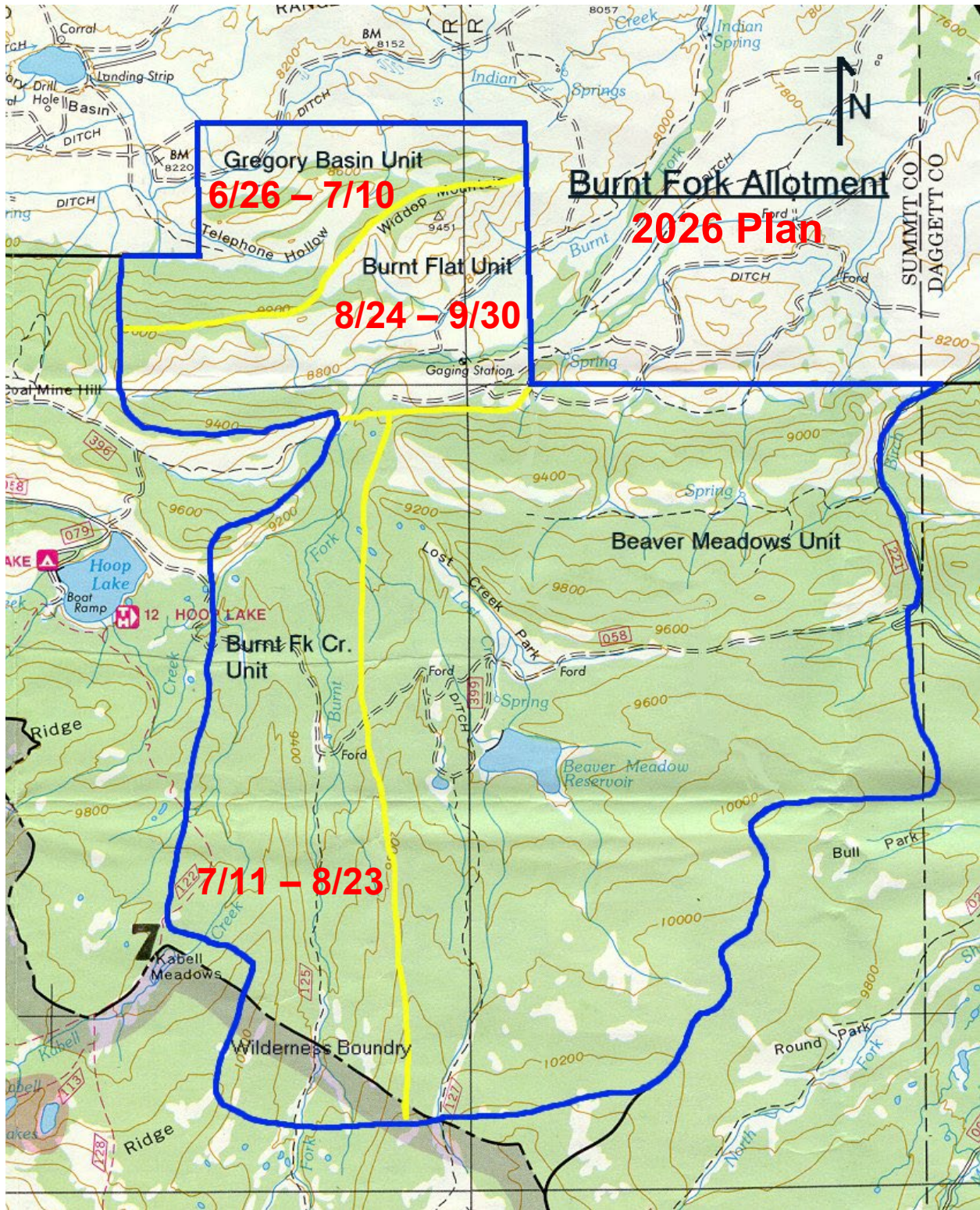
Every effort must be taken to completely remove cattle off the National Forest by the scheduled off date. For example, if it requires three days of riding to gather your cattle, then you should start riding three days prior to your scheduled off date.

If there have been approved changes complete the actual use report and return it by November 30. If you have any questions or comments, please contact Aimee. Thanks for your cooperation in managing this allotment.



---

JUSTIN ROBINSON  
District Ranger



UINTA-WASATCH-CACHE NATIONAL FOREST  
EVANSTON-MOUNTAIN VIEW RANGER DISTRICT

**BURNT FORK ALLOTMENT (West Side)**  
**2026 ACTUAL USE RECORD**

**Permittee**  
7B Livestock LLC

**Authorized Number**  
100 cow/calf

**Season of Use**  
6/26 – 9/30

Planned Use:

Unit	Enter Date	Leave Date	Days Planned
Gregory Basin	6/26	7/10	15
Burnt Fork Creek	7/11	8/23	44
Burnt Flat	8/24	9/30	38

Actual Use:

Unit	Enter Date	Leave Date	Days Use
Gregory Basin			
Burnt Fork Creek			
Burnt Flat			

Signature: \_\_\_\_\_ Date: \_\_\_\_\_  
(Permittee: 7B Livestock LLC)

Comments: *(Included needed range improvements; improvements maintained or visited; new noxious weeds locations; and ect.)*

**Percent utilization of key grass or grass like vegetation, by vegetation type, for rangelands in satisfactory condition.**

Vegetation Type	Condition	Percent Utilization Key Grass or Grass like
Upland and Aspen	Satisfactory	50
Crested Wheatgrass	Satisfactory	60
Riparian* Class I	Satisfactory	50
Riparian* Class II & III	Satisfactory	60

\*Riparian, away from greenline

Maximum forage utilization standards (stubble height) for low to mid elevation *greenline* species in Class I, II, and III riparian areas in satisfactory condition are as follows: (Key species being grazed include water sedge, Nebraska sedge, and and/or wooly sedge.)

**Greenline stubble height at the end of the growing season, by riparian class, for rangeland satisfactory condition.**

Riparian Class	Condition	Greenline Stubble Height at End of Growing Season
Riparian Class I	Satisfactory	No Less Than 5"
Riparian Class II	Satisfactory	No Less Than 4"
Riparian Class III	Satisfactory	No Less Than 3"

For all rangelands, including big game winter range and riparian areas, no more than 50% of the current year's growth on woody vegetation to be browsed during one growth cycle (i.e., when use has reached 50% no additional livestock use).

As a tool to achieve rehabilitation of upland, aspen, and riparian communities away from the greenline that are not meeting or moving toward objectives (i.e. in unsatisfactory condition), maximum allowed forage utilization is 30-40 percent.

Livestock management activities to result in no less than 85% of potential ground cover for each vegetation cover type.