



Silver Bear Snowmobile Trails

Eldorado National Forest

Amador Ranger District



The Silver Bear winter recreation area is located on the Amador Ranger District, Eldorado National Forest on scenic Highway 88. Depending on snow levels and weather conditions, 20-55 miles of groomed routes in the Silver Bear snowmobile trail system are maintained throughout the winter.

Winter is a beautiful time of year to explore the Amador District with its many miles of roads and trails to operate your over snow vehicle and to experience the splendors of this scenic area. These trails offer many opportunities for all levels of snowmobilers and other guests.

Great Views at Leek Springs Lookout

On clear days, the Leek Springs lookout offers breathtaking 360 degree views of the Sierra Nevada Range. Looking to the South, you can view the Mokelumne Wilderness and river drainage as it snakes its way to the West towards California's Central Valley. Lake Tahoe is tucked behind the angular snow covered peaks of the Crystal Range to the Northeast. Be heads up when at the lookout as the wind does blow at high rates of speed and snow conditions can be anywhere from very soft deep powder to very hard packed ice.

Grooming

Maintenance of the trail system is accomplished using a full size, ski resort style snow cat groomer, operated during and after major winter storms and on an as needed basis depending on use. Portions of the groomed trail system may be closed due to hazards or grooming operations.

Rules and Regulations

Regular patrols are conducted by Forest Service personnel on snowmobiles enforcing laws, regulations and safety pertaining to use of over snow vehicles.

- ⇒ All wheeled vehicle travel is prohibited on the Silver Bear snowmobile system and is enforceable under 36 CFR 261.50B, Forest Order 03-15-06.
- ⇒ Greenstickers are required. <https://www.dmv.ca.gov/portal/dmv/detail/vr/offhighway>

Iron Mountain Sno-Park Staging Area

When parking at the trail head at Iron mountain snow park, winter snow park permits are required. You can obtain a permit at ...

- ◇ Sorensen's Resort on the east side of Carson Pass
- ◇ Buck Horn Hardware in Pioneer
- ◇ Amador Station in Pioneer
- ◇ Amador Ranger District office in Pioneer.
- ◇ Permits can be purchased online at ohv.parks.ca.gov. prior to leaving home as well. Search for "snopark permits" on the website and do the necessary steps to obtain the permit. Make sure to print the permit out and place in your windshield when parking at the trail head.

Leaving from Iron Mountain snow park heading towards Bear River reservoir along MET and Foster Meadow road, maintain a safe speed of your machine and keep an eye out for cross country skiers and other users. Please be respectful to other users on the trail since it is a combined use system for skiers, snowmobilers and snowshoers.

USDA is an equal opportunity provider and employer.



Use Caution

- ◇ Hazards can vary from trees across the trail to large bare spots so be aware of your surroundings as you travel these routes.
- ◇ Some areas require advanced riding skills and abilities.
- ◇ The 6 mile portion of trail from Maidens Grave, also known as Windy Hollow, on highway 88 heading southwest towards the intersection of the Ridge has many unmarked obstacles and does not get groomed on a regular basis due to snow conditions.
- ◇ Riders need to be aware and use caution when riding the whole trail system and not operate beyond their abilities.
- ◇ Cell phones do not work as there is no cell service on a majority of routes.

Map and QR Code

A GPS and a good map are important tools to carry with you while riding on the Silver Bear trail system. You can use these QR codes with an App on your smart phone to see large and small file size versions of the Silver Bear groomed snowmobile trail system. The maps are 24' x 36".



2.7 Mb



11 Mb



Partnership

The Silver Bear snowmobile trail system is supported through partnerships including California State Parks, California Off Highway Vehicle Program, Pacific Gas and Electric company, The California Nevada Snowmobile Association and the Eldorado National Forest. Funds that support this program are provided by green sticker registration funds from the State of California.

Avalanche Hazard

There may be danger from avalanche conditions. Be aware that snow on slopes may slide when temperature, snow, and topographical conditions are right. Narrow clearings running with the steep axis of slopes are possible avalanche paths and should be avoided.

The safest routes are on ridgetops and slightly on the windward side, away from cornices. If travel on the ridges is impossible, the next safest route is out in the valley, away from the bottom of slopes.

**For Central Sierra Avalanche Hazard Ratings,
Call: (530) 587-2158**

www.sierraavalanchecenter.org/

Emergency

Highway Patrol, Sheriff, Ambulance 911

Alpine County Sheriff (day). . . (530) 694-2231

Amador County Sheriff (day). . (209) 223-6500

Visitor Information

Amador Ranger District.....(209) 259-3774

26820 Silver Drive, Pioneer CA 95666

Cal Trans (Road Conditions).....(800) 427-7623

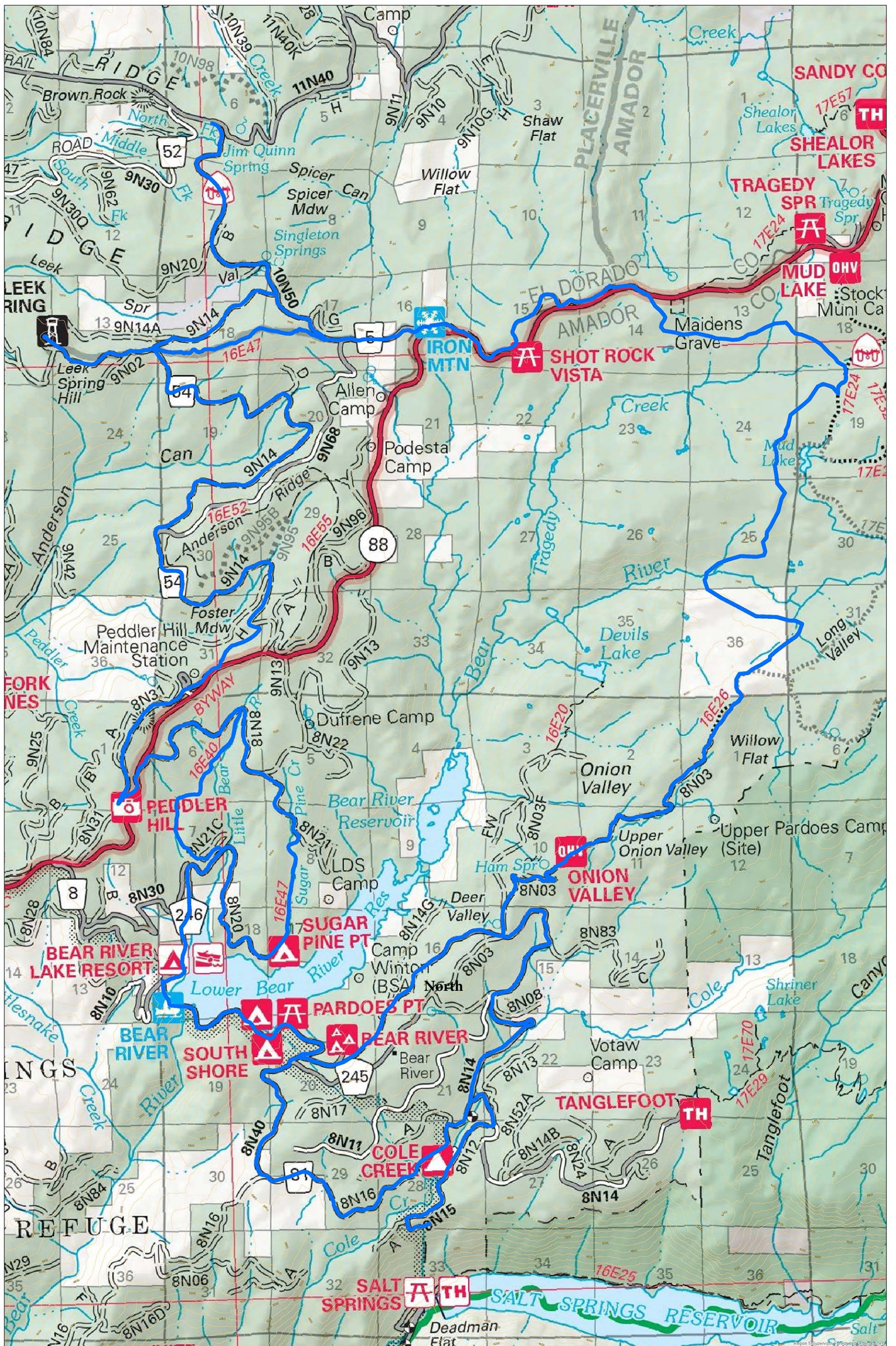
www.dot.ca.gov/hq/roadinfo

Be Prepared

- ◆ Find out the current weather forecast and road conditions.
- ◆ Be prepared for bad weather. Have extra water, clothing, and supplies with you and in your vehicle in case you are stuck for awhile.
- ◆ **Before leaving home**, notify a responsible person of your travel plans; including a map with your route clearly marked. Check back with this person when you return. If you are overdue, this person should notify the Alpine County Sheriff at the number below.
- ◆ Ride with a buddy.

SILVER BEAR SNOWMOBILE TRAILS

North



South