

Fuelwood

If you are camping on the Shasta-Trinity National Forest, you may collect up to 1/8 cord (4 ft x 2 ft x 2ft) of fuelwood for your camp fire up to 2 cord per year. Only dead and down wood may be used for collection, all wood must be cut into 3 foot sections or smaller. All fuelwood must remain at the campsite and may only be used on National Forest Lands.

When using fuelwood you can reduce the amount of wood you use and smoke you produce by only using dry, seasoned wood. Start your fires quickly using small kindling; keep your fires burning hot and small. This will keep the air cleaner, keep you warmer longer, and reduce your impact on the land.

Prior to harvesting wood and burning a campfire check the current *Project Activity Level* and obtain your CA Campfire Permit. Contact the District office near your campsite or go online to:

<https://www.fs.usda.gov/main/stnf/passes-permits>

Functioning spark arresters are a requirement on all power saws. Use of chainsaws requires you to carry fire prevention tools with each saw including an axe, shovel, and fire extinguisher of at least 8 oz. capacity. Depending on the public use restrictions in effect, it may also require a one-hour fire watch after using the saw. We encourage you to collect your wood by hand with the aid of hand saws.

Always take the necessary fire safety precautions before, during, and after you build your fire to keep you within requirements and reduce safety risks to everyone. In general, don't build your fire on, above, or below dead vegetation and keep a ten foot buffer of mineral soil (bare soil clear of all grass, leaves, rotten logs or stumps, and other vegetation). Keep your fire small, never leave your fire unattended, and keep within reach water and a shovel to throw dirt over your fire. Before leaving drown your fire with water, stir the coals and ash, and drown it again until it's cool to the touch..

Conditions of Incidental Use

- ✓ Harvest or transport of products collected under Incidental-Use cannot take place while any person present in your group is harvesting or transporting the same product(s) under a charge permit.
- ✓ Only products listed may be harvested and only from areas open for the harvest of those products. It is your responsibility to ensure you are on open National Forest Lands.
- ✓ In order to protect the land and resources, products may be removed or limits lowered without notice; it is your responsibility to stay up to date. You may visit our web page or contact our offices to stay current.
- ✓ Individual product harvesting techniques must be followed; refer to each of the product headings for details or contact our office.
- ✓ Follow all road and area closures. Closures are placed to reduce the spread of forest diseases, protect wildlife & land resources, or to provide for public safety. Vehicles are not allowed on closed roads or off roads, refer to the Forests Motor Vehicle Use Map. Do not block roads or gates.
- ✓ Protect the ground, surrounding vegetation, and soil from damage and disturbance.
- ✓ Pack it in. Pack it out. Please do not litter!
- ✓ Bury human waste a minimum of 12-18 inches deep and 300 feet away from any water source or open road.
- ✓ Do not harvest within 300 feet of any water body, campground, active contract area, or building.
- ✓ Be able to correctly identify species before harvesting. Harvest of any protected or sensitive species or any part of it is strictly prohibited. There are numerous species that are poisonous. It is the harvester's responsibility to ensure they know the status of species and to not harvest or damage any protected or sensitive species.

WHEN IN DOUBT, LEAVE IT IN THE WOODS!

Please do your part in taking care of these valuable resources; respect the land and all forest visitors.

**Shasta-Trinity National Forest
Supervisor's Office**
3644 Avtech Parkway
Redding, CA 96002
(530) 226-2500

Hayfork Ranger District
P.O Box 159
Trinity Street
Hayfork, CA 6041
(530) 628-5227

Weaverville Ranger District
P.O. Box 1190
Main Street
Weaverville, CA 96093
(530) 623--2121

Shasta Lake Ranger District
14225 Holiday Road
Redding, CA 96003
(530) 275-1587

Mt. Shasta Ranger District
204 West Alma Street
Mt. Shasta, CA 96067
(530) 926-4511

McCloud Ranger District
P.O. Box 1620
McCloud, CA 96057
(530) 964-2184

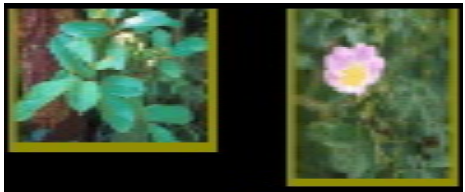
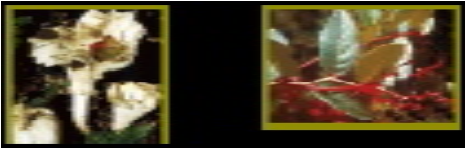
Non-Discrimination Statement: The U.S. Department of Agriculture (USDA) prohibits discrimination in all its programs and activities on the basis of race, color, national origin, age, disability, and where applicable, sex, marital status, familial status, parental status, religion, sexual orientation, genetic information, political beliefs, reprisal, or because all or part of an individual's income is derived from any public assistance program (Not all prohibited bases apply to all programs.) Persons with disabilities who require alternative means for communication of program information (Braille, large print, audiotape, etc.) should contact USDA's TARGET Center at (202) 720-2600 (voice and TDD). To file a complaint of discrimination, write to USDA, Director, Office of Civil Rights, 1400 Independence Avenue, S.W., Washington , D.C. 20250-9410 , or call (800) 795-3272 (voice) or (202) 720-6382 (TDD). USDA is an equal opportunity provider and employer.



SPECIAL FOREST PRODUCTS

**INCIDENTAL-USE
GUIDE**

Shasta-Trinity National Forest



April 2020

R5-UP-099

Please contact our office for the most current version of this brochure at (530) 226-2500 or online at:

<https://origin-fs.fs.usda.gov/main/stnf/passes-permits>



What is Incidental Use?

A permit is typically required to harvest special forest products on the Shasta-Trinity National Forest. For minor amounts of forest products that are for one’s direct personal use a permit may not be required. This brochure lists the products and the amounts that may be harvested under incidental use without charge and without the need of a permit when these products are used for your own use. It also describes how products may be harvested and provides information on the locations where harvest may occur. Materials gathered under incidental use cannot be sold or exchanged in any form.

Products and quantity limits may change from time to time to protect forest resources. It is the responsibility of the harvester to stay current with updates. You may contact any of our offices or check our website for the most current listings. <https://www.fs.usda.gov/main/stnf/passes-permits>

Where can I Harvest?

No harvest is allowed within operating contract areas such as forest product sales, pre-commercial thinning areas, etc. There is NO harvest within 300 feet of any building, campground, state highway, river, stream, pond, lake, or other water body.

Harvesting of special forest products is only allowed on National Forest Lands within the Shasta-Trinity National Forest that fall outside of administrative sites, wilderness areas, botanical areas, and research natural areas.

These areas are not typically marked in the field, and it is the harvester’s responsibility to ensure they are on open lands when harvesting. Maps to help harvesters ensure they are on the Forest can be obtained online and at district offices for no charge.

What can I Harvest?

Product	Daily Limit	Yearly Limit
Plants	2 pounds	20 pounds
Berries	1 gallon	5 gallons
Boughs, Twigs, & Other Cuttings	5 pounds	40 pounds
Cones <u>Maximum of 5 sugar pine cones per day.</u>	15 cones	5 bushels
Fuelwood <u>Only for on– Forest camping use. Only dead and down material may be collected.</u>	1/8 cord (4 ft x 2 ft x 2 ft)	2 cord
Fruits & Seeds	1 pound	20 pounds
Medicinal	2 pounds	20 pounds
Mushrooms <u>No Matsutake Mushrooms</u>	1 gallon	5 gallons

Plants

Leaves, are collected for a variety of purposes. Species that are common may be harvested for one’s personal use. Up to 2 pounds of leaves may be harvested per day with a maximum limit of 20 pounds per year.

Only the leaves may be harvested under this category. The branch and root system must be left undisturbed to ensure leaf re-growth and to foster the health of the plant following harvest. Choosing only leaves that you can reasonably use and harvesting a limited number of leaves from any one plant (not to exceed 10% on any individual plant) promotes a healthy sustainable plant.

Berries

Blackberries, Huckleberries, Elderberries, and other berries may be harvested for one’s own direct personal use up to one gallon per day with a limit of 5 gallons per year. Choosing only berries that you can reasonably use and gathering conservatively from any one plant and from each berry patch will ensure a viable local seed bank as well as maintain a food source for Wildlife. Stems, branches, and leaves must be Protected while harvesting to maintain plant health. This helps promote successful berry production in the future.

Boughs, Twigs, & Other Cuttings

Some of our evergreen conifer trees may be used for bough collection. Several other trees and shrubs are used for collection of cuttings, including harvesting part of a plant’s twigs. Plants that are common are available for collection for one’s personal use up to five pounds per day with a 40 pound yearly limit.

Choosing only those cuttings that you can reasonably use and only a few from any one plant promotes a stronger plant. Choosing disease and insect-free cuttings and boughs helps ensure you do not spread pests and helps keep our forests and urban woodlots healthy. Boughs are to be removed from the lower 1/3 of tree and cut flush with the bole of trees.

Cones

Many of our conifers have ideal cones for decorative uses such as wreaths, potpourris, and other crafts. Only dry conifer cones that are on the ground may be harvested. Choosing only cones that are completely dry and free of damage helps prevent the spread of insects and disease. For your personal use you may collect up to 15 cones per day up to 5 bushels worth (6 cubic feet) per year. A maximum of five sugar pine cones may be harvested per day.

Fruits & Seeds

The fruits and seeds of several plants are collected for a variety of uses ranging from making edible jams to growing the plants themselves. Plants that are common may be harvest for one’s personal use up to one pound per day with a 20 pound yearly limit.

Medicinals

Some plant species have unique chemical properties with medicinal qualities. Species that are common may be harvested for your personal use below the two pound daily limit and within the 20 pound yearly limit. Choosing only the plant part that is needed and gathering conservatively from any one plant or from each group (no more than 10 % of any population) will ensure available local seed source.

Mushrooms

There is a wide variety of mushrooms that are common on the Shasta-Trinity National Forest that may be harvested for your personal use without a permit. You may harvest up to one gallon per day with a five gallon yearly limit. Under the incidental amounts for personal use, NO MATSUTAKE mushrooms may be harvested. Mushrooms are the fruiting part of living organisms, of which the vast majority is in the leaf litter, the duff layer, and soil. Carefully pluck or cut mushrooms without disturbing the ground to protect the living organism’s fungal net. The maximum width allowed for any extraction tool is one inch (2.54 cm). Do not rake or dig for mushrooms and do not pull mushrooms up. This helps sustain a healthy fungi population that will continue to produce mushrooms in the future. Keeping your harvested mushrooms in a basket or container with openings helps to spread spores around as you are picking, aiding the chance for successful reproduction and expansion of local populations. Mushrooms with a cap diameter of 2 inches or greater must be cut or broken into sections immediately.