



Mt. Hood Christmas Tree Harvest

Understanding Forest Roads

Most paved forest roads have two digits: 18, 58, etc. Most gravel roads have four or more digits: 5860, 2613 etc. You can gauge where a four digit road may be on the district, by looking at the first two numbers: road 5860, connects to the 58 road road 1828 connects to the 18 road

Not all roads are shown on this map.

MVUM maps with detailed road systems are available for free at Ranger Stations or through the Avenza Maps app. Roads are not maintained for winter travel. Winter conditions may close some roads. Be prepared when heading to the woods!

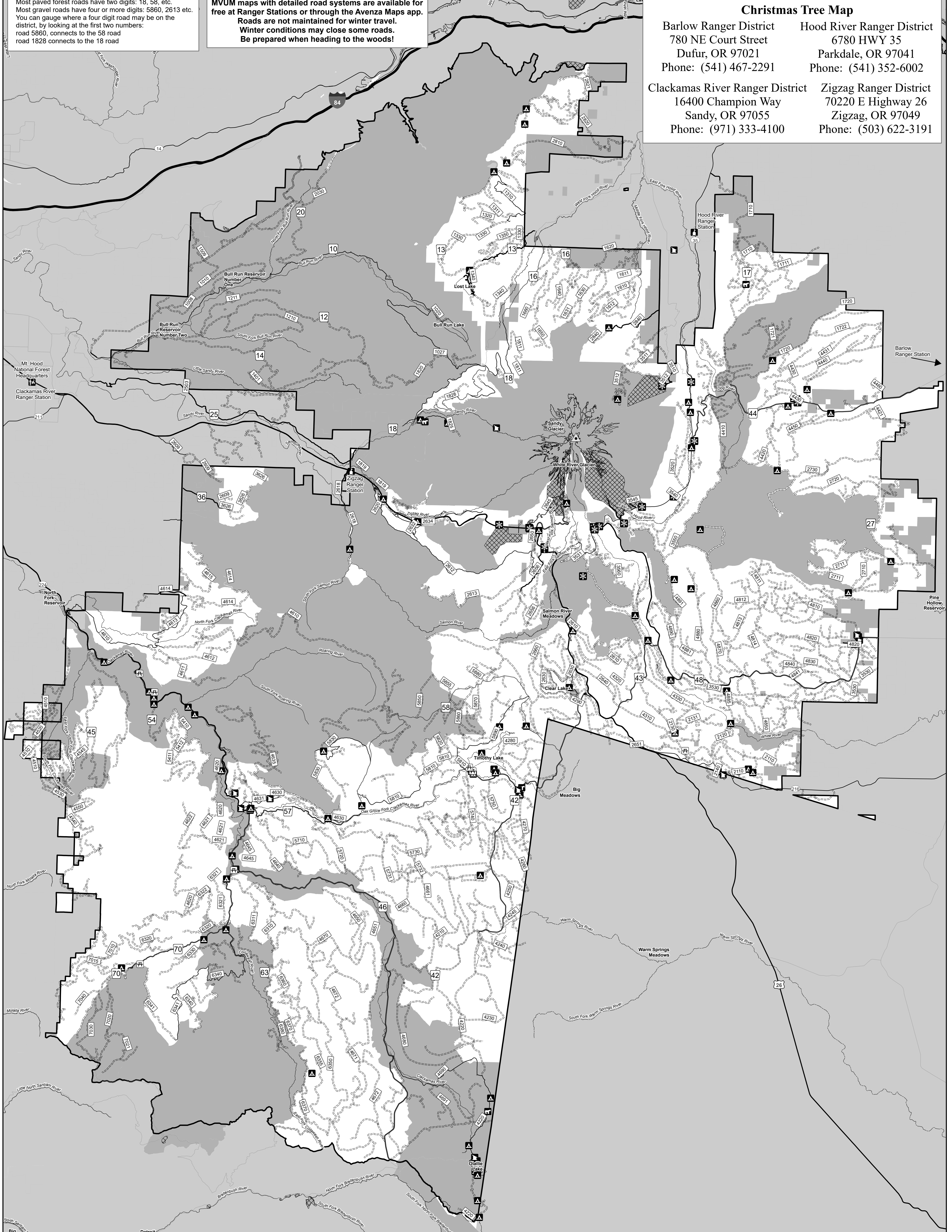
Mt. Hood National Forest Christmas Tree Map

Barlow Ranger District
780 NE Court Street
Dufur, OR 97021
Phone: (541) 467-2291

Hood River Ranger District
6780 HWY 35
Parkdale, OR 97041
Phone: (541) 352-6002

Clackamas River Ranger District
16400 Champion Way
Sandy, OR 97055
Phone: (971) 333-4100

Zigzag Ranger District
70220 E Highway 26
Zigzag, OR 97049
Phone: (503) 622-3191



Christmas Tree Permit Policy:

- Responsible harvesting enables this fun tradition to continue! Respect signage and closures.
- Forest roads are not plowed and may be closed due to snow depth or winter range habitat.
- Do not park on highways, tree cutting is prohibited within 100 feet of highways.
- Do not cut within 100 feet of a trail, 200 feet of recreation sites, 300 feet of a river, lake or stream; wilderness, municipal watersheds or areas posted as "No Christmas Tree Cutting."
- Sno-park permit required for areas maintained by Oregon Department of Transportation (ODOT).
- While choosing your tree, ensure there is another tree to grow within 12 feet of the one you cut.
- Tree Height up to 15 feet. Larger trees available at a "per foot" cost at your local Ranger District.
- Do not remove the top of the tree; cut down the entire tree to stump height of 6 inches or less.
- Protect natural resources. Do not cause damage. Scatter excess branches and pack out trash.
- Christmas Tree Permit purchased online at Recreation.gov must be printed to be valid. Place on the dashboard of your vehicle in clear view while harvesting and transporting your tree.
- Christmas Tree tags (sold at offices or local vendors) must be securely attached to the tree.

Helpful Tips:

- Check the latest weather conditions, forest warnings and road closures before you go.
- Be prepared for cold winter weather, ice, snow and winds. Avoid going out during low visibility, blizzard conditions or stormy days. If the road looks bad, don't drive it!
- Bring measuring tape, handsaw, gloves, loppers, tarp and tie-down straps or rope.
- Carry your tree carefully out of the woods. Dragging the tree will rub off needles and bark.
- Carefully tie down your load for the safety of you and others sharing the road.
- Stand freshly cut tree in container of water when you get it home, replenish water as needed.



11/13/2024

	Tree Cutting Allowed
	No Tree Cutting
	Ski Resorts
	No Cutting Allowed In
	CAMPGROUND
	HORSE CAMP
	PICNIC SITE
	SNO-PARK

This product is reproduced from geospatial information prepared by the USDA Forest Service. Geospatial information and GIS product accuracy may vary. Using GIS products for purposes other than those for which they were created may yield inaccurate or misleading results. USDA Forest Service reserves the right to correct, update, modify or replace GIS products without notification