

122°0'0"W 121°50'0"W 121°40'0"W 121°30'0"W 121°20'0"W 121°10'0"W

45°40'0"N

45°30'0"N

45°20'0"N

45°10'0"N

45°40'0"N

45°30'0"N

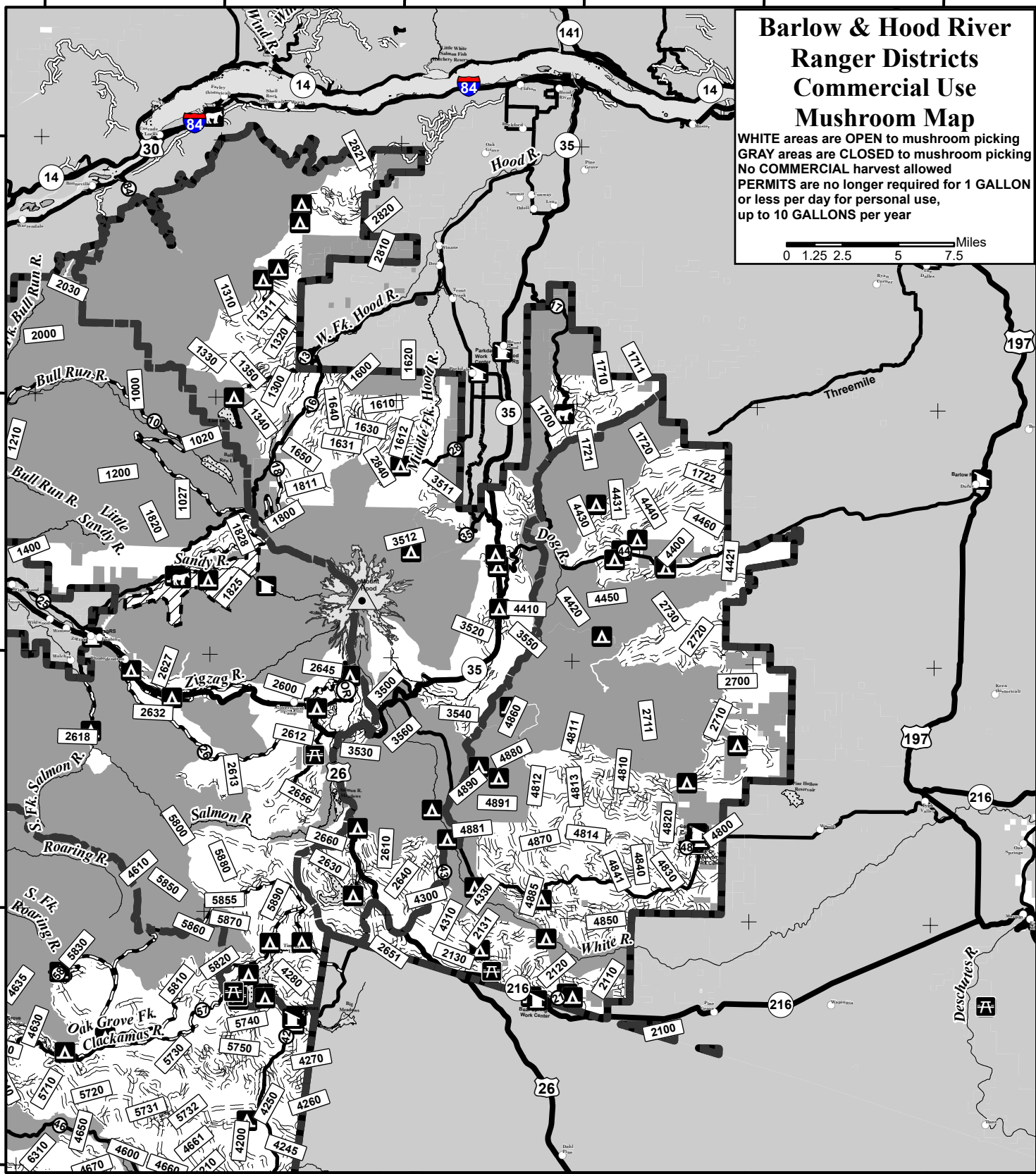
45°20'0"N

45°10'0"N

Barlow & Hood River Ranger Districts Commercial Use Mushroom Map

WHITE areas are OPEN to mushroom picking
GRAY areas are CLOSED to mushroom picking
No COMMERCIAL harvest allowed
PERMITS are no longer required for 1 GALLON
or less per day for personal use,
up to 10 GALLONS per year

0 1.25 2.5 5 7.5 Miles



122°0'0"W

121°50'0"W

121°40'0"W

121°30'0"W

121°20'0"W

121°10'0"W

Mt. Hood NF Boundary

Lake, Pond, Wetland

Mountain Peak

Reference the current
forest Motor Vehicle
Use Map (MVUM)
for travel restrictions.

Ranger District Boundaries

River

Campground

OPEN to Mushroom Picking

Highway

Horse Camp

CLOSED to Mushroom Picking

Paved Road

Picnic Site

Old Maid Flats -
Open With RESTRICTIONS

Road Maintained for
Passenger Vehicle

Administrative Site

Road Not Maintained
for Passenger Vehicle



This product is reproduced from information prepared by the USDA, Forest Service or from other suppliers. The Forest Service cannot assure the reliability or suitability of this information for a particular purpose. The data and produce accuracy may vary due to compilation from various sources, including modeling and interpretation, and may not meet National Map Accuracy Standards. This information may be updated, corrected or otherwise modified without notification. For more information contact: Mt. Hood National Forest Supervisors Office at 503-668-1700. The USDA is an equal opportunity provider and employer.



March 2024