

**UNITED STATES DEPARTMENT
OF AGRICULTURE
FOREST SERVICE**

Boundary Description and Final Map
ZIG ZAG RIVER WILD AND SCENIC RIVER
Mount Hood National Forest
Pacific Northwest Region



As entered into the
National Wild and Scenic River System
By The
Omnibus Public Land Management Act of 2009
Public Law 111-11, March 30, 2009

March 2022

NATIONAL WILD AND SCENIC RIVERS SYSTEM

Zig Zag River Wild and Scenic River

Mount Hood National Forest

I hereby certify that the legal boundary description and map made part of this description herewith represents the location of the boundary of the Zig Zag River Wild and Scenic River on the Mount Hood National Forest.

Signed: _____

Date: _____

Regional Land Surveyor
Pacific Northwest Region
USDA Forest Service

I hereby certify and accept the boundary description and map of the Zig Zag River Wild and Scenic River on the Mount Hood National Forest as entered into the National Wild and Scenic Rivers System under the Omnibus Public Land Management Act of 2009 (Public Law 111-11) dated March 30, 2009.

Signed: _____

Date: _____

Regional Forester
Pacific Northwest Region
USDA Forest Service

NATIONAL WILD AND SCENIC RIVER

Zig Zag River

Designated March 30, 2009

by the

Omnibus Public Land Management Act of 2009

Public Law 111-11

This description and the accompanying final map are based on the Congressionally approved 4.3-mile segment of the “Zig Zag River” for the creation of the Zig Zag River Wild and Scenic River contained within the Omnibus Public Land Management Act of 2009 (Public Law 111-11) dated March 30, 2009. This description and the accompanying final map shall govern all boundaries of the Wild and Scenic River and shall be considered as if contained in the original legislation, P.L. 111-11. In the case of any conflicts found between the final map and this description, the final map shall govern the resolution thereto.

Wild Segment: “The 4.3-mile segment of the Zig Zag River from its headwaters to the Mount Hood Wilderness boundary, to be administered by the Secretary of Agriculture as a wild river.” (Public Law 111-11)

A strip of land lying 1320 feet each side of the ordinary high water lines of the Zig Zag River, situated in the state of Oregon, County of Clackamas, and being a portion of the lands more particularly described as follows:

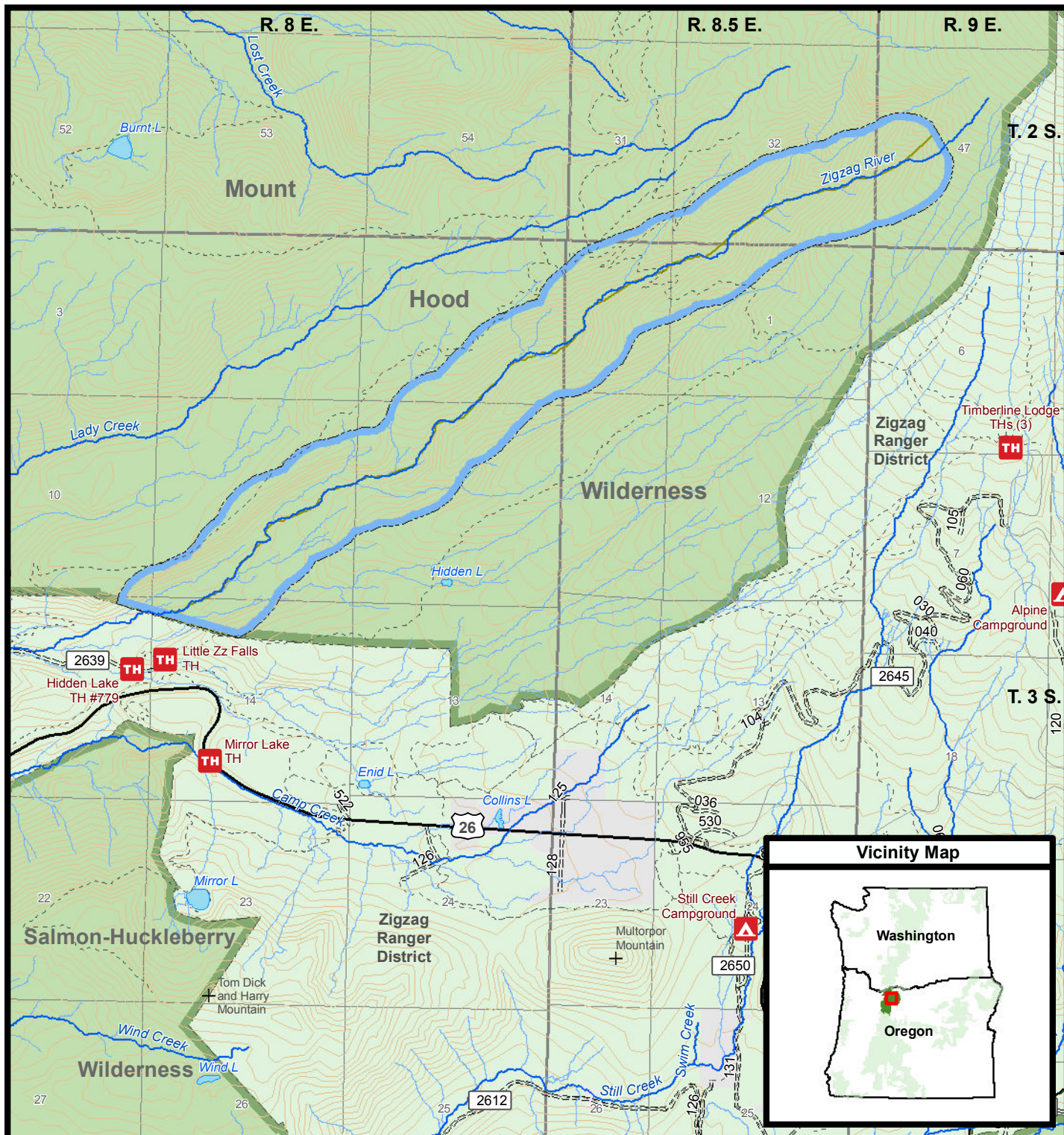
Willamette Meridian, Washington

- T. 2 S., R. 9 E., unsurveyed.
protraction block 47.
- T. 2 S., R. 8-1/2 E., unsurveyed.
protraction blocks 39 and 40.
- T. 3 S., R. 8-1/2 E.,
secs. 1, 2, and 11.
- T. 3 S., R. 8 E.,
secs. 1, 10, 11, 12, 14, and 15.

The sidelines of said strip of land shall be lengthened or shortened, as necessary, so as to begin at its intersections with the lines bearing North 31° 26' West and South 31° 26' East from the northeasterly most point of the headwaters of the Zig Zag River, being located approximately at the arc of latitude at 45°21'11.93" North and the arc of longitude at 121°43'09.23" West, and to end at the Mount Hood Wilderness Boundary, as designated under Public Law 88-577 and expanded under Public Laws 95-237 and 111-11, said end lines shall be bounded by the same, as designated under Public Law 111-11.

EXCEPTING THEREFROM any portion of said strip of land lying outside of the circle, 1320 feet radius from its origin in the thread of the main stem of the Zig Zag River at the arc of longitude at $121^{\circ}43'21.82''$ West.

The area described contains 1495 acres, more or less, and encompasses approximately 4.9 miles of the Zig Zag River. The bearings shown herein are geodetic, referenced to the true meridian, NAD 83 (2011).




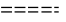



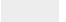
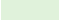
References

This map depicts the final boundaries for the Zigzag Wild and Scenic River, designated by Congress under the Omnibus Public Land Management Act of 2009 (Public Law 111-11) dated March 30, 2009, and shall be considered as if contained in the original legislation, P.L. 111-11.



0 0.5 1 1.5 Miles
80 FT Contour Interval

Map Creation Date - February 04, 2022

- Sheet 1 of 1
-  Zig Zag Wild and Scenic River
 -  Open Forest Roads
 -  Trails
 -  Ranger District Boundary
 -  Wilderness
 -  Non - Federal Land
 -  National Forest System Lands

Zigzag Wild and Scenic River
Mt. Hood National Forest
Pacific Northwest Region, Oregon
March 30, 2009, Public Law 111-11

Final Map

Contains 1495 Acres, more or less, of Federal Land
T.2S., R.9E. & T.2S., R.8-1/2E. &
T.3S., R.8-1/2E. & T.3S., R.8E.
Willamette Meridian, Clackamas County, Oregon State
U.S. Congressional District 3

Albers Conic Equal Area Projection
North American Datum 1983 (NAD 83)
Copies of this map are available in the
Office of the Regional Forester,
Pacific Northwest Region, Portland, OR