



United States Department of Agriculture

Mt. Hood National Forest

GUIDE TO WINTER RECREATION



Forest Service
Mt. Hood National Forest

Winter sports, such as cross-country skiing, snowshoeing, snowmobiling, sledding and more are some of the most popular recreation opportunities on Mt. Hood National Forest.

Trail Etiquette

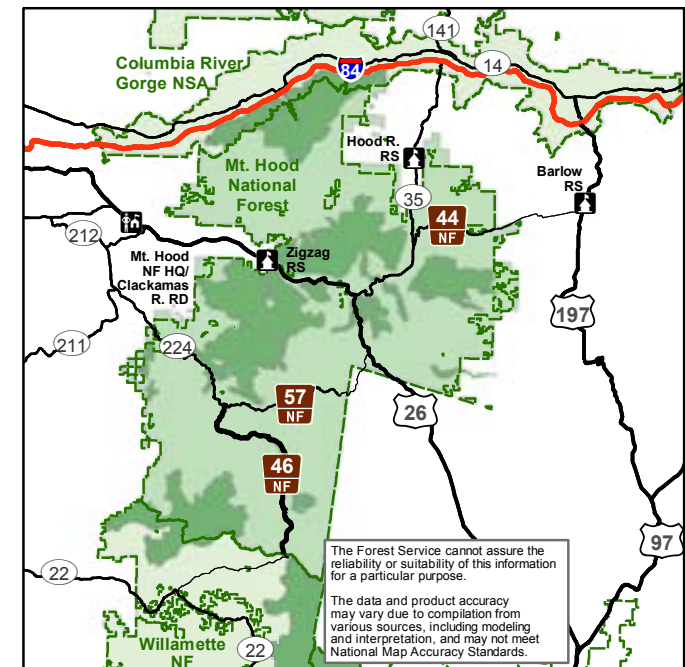
- Observe all posted guidelines and instructions.
- Snowshoers and hikers (when allowed on multi-use trail) should travel on the outside edge of the trail. Snowshoe/boot tracks do not mix well with skis especially for beginning skiers or on icy days.

Be Prepared

- A valid Sno-Park permit is required if you park in a designated winter recreation parking area (Sno-Park) between November 1 and April 30.
- Know the area and what to expect; ALWAYS check avalanche and weather reports prior to departure. Consult maps and local authorities about safety information and regulations for the area you plan to visit. Carry and use an avalanche beacon, probe and shovel. Monitor snow conditions frequently.
- Prepare for extreme weather, hazards and emergencies.
- Educate yourself by taking a winter backcountry travel course.
- Visit the backcountry in small groups, but never alone. Leave your itinerary with family or friends.
- Prepare your vehicle too: anti-freeze, washer fluid anti-freeze, tire chains, scraper, shovel, travel kit.

10 Essentials for Winter Hiking and Camping

1. **Navigation:** map, compass, GPS device, personal locator beacon, or satellite messenger.
2. **Light:** Flashlight, headlamp and batteries.
3. **Sun protection:** sunscreen, sunglasses and hat.
4. **First Aid Kit:** with all the essentials to care for common accidents and ailments.
5. **Knife or Multi-tool:** for a variety of uses.
6. **Fire:** matches, lighter, tinder and/or stove.
7. **Shelter:** tarp, tent, emergency blanket.
8. **Extra Food:** bring plenty to sustain you through a night or many more hours in the outdoors.
9. **Extra Water & Purification:** filter, tablets, or the ability to boil water.
10. **Extra Layers:** for changing weather conditions.



Oregon's Sno-Park program helps provide snow removal at about 100 winter recreation parking areas (Sno-Parks) across the state. Sno-Parks exist in most of Oregon's mountain passes and in most ski, snowmobile and snow play areas. There are three types of sno-park permits: a \$25 seasonal permit, a \$9 three-day permit, and a \$4 daily permit. All DMV offices and permit agents at winter resorts, sporting goods stores and other retail outlets sell these permits. Private agents can charge an additional service fee. A list of permit agents is available at www.tripcheck.com under "Travel Center."

Links

Mt. Hood National Forest: fs.usda.gov/mthood

NOAA: weather.gov

Northwest Avalanche Center: nwac.us

Oregon Sno-Parks: tripcheck.com/pages/sno-parks

Mt. Hood Express: mthoodexpress.com

Gorge to Mountain Express: ridecatbus.org/gorge-to-mountain-express/

Leave No Trace: Int.org

Contacts

Mt. Hood National Forest District Offices

Barlow Ranger District: 541-467-2291

Clackamas River Ranger District: 971-333-4100

Hood River Ranger District: 541-352-6002

Zigzag Ranger District: 503-622-3191

Emergency Contacts

Highway Patrol, Sheriff, Ambulance: 911

Clackamas County Sheriff: 503-655-8211

Hood River County Sheriff: 503-386-2098

Wasco County Sheriff: 503-506-2580

USDA is an equal opportunity provider, employer, and lender.

Sno-Park <i>A sno-park permit is required at all areas except those marked *</i>	Activity <i>A – Alpine skiing X – Cross country skiing B – Snowshoes P – Snow play M – Snowmobiles D – Dog Sledding</i>	Trails Groomed	Elevation (in feet)	Trailer Parking	Amenities
Barlow Pass: 2 miles east of US 26 on OR 35	X B	No	4150’	No	Toilet
Bennett Pass: 6 miles north of US 26 on OR 35	X B M	No	4700’	Yes	Toilet
*Billy Bob: Hwy 197 at Dufur to Forest Road 44	X B M D	M D	3500’	Yes	Toilet, shelter
Cooper Spur: 30 miles south of Hood River off OR 35	A X B P	A P	4000’	Yes	Full service ski area
Frog Lake: 4.5 miles south of OR 35 on US 26	X B M D	M D	3950’	Yes	Toilet
Glacier View: 0.5 mile west of Gov. Camp on US 26	X B	No	3600’	No	None
Government Camp: Government Camp Loop Road	Business District	N/A	3950’	Yes	Various
Government Camp Maintenance Station/ Mazamas	X B	X	4000’	Yes	Intermittent grooming
Hood River Meadows: 37 miles south of Hood River on OR 35	A X	A X	4500’	Yes	Full service ski area, additional fee required
Little John: 31 miles south of Hood River on OR 35	X B P M	No	3300’	Yes	Toilet, shelter
Mirror Lake: 2 miles west of Gov. Camp on US 26	X B	No	3500’	Yes	Toilet
Mt. Hood Meadows: 38 miles south of Hood River on OR 35	A B	A	5400’	Yes	Full service ski area, medical clinic
Nordic: Adjacent to Ski Bowl West	X B	No	3700’	No	No Services
Pocket Creek: 34.5 miles south of Hood River on OR 35	X B	No	3800’	Yes	Toilet
Ski Bowl East: Near Gov. Camp off of US 26	A X B P	A P	3850’	No	Full service ski area, commercial tubing hill
Ski Bowl West: Across from Gov. Camp on US 26	A X B	A	3650’	Yes	Full service ski area, additional fee required
Skyline Road: 10 miles south of OR 35 on US 26	X M D	M D	3600’	Yes	Toilets, day use area, shelter
Snow Bunny: 2 miles east of Gov. Camp on US 26	X B P	No	3850’	Yes	Toilet
Summit: East end of Gov. Camp on US 26	A X B P	A P	3900’	Yes	Ski & tubing hill; toilets at Gov. Camp Rest Area
Teacup Lake: 36.5 miles south of Hood River on OR 35	X	X	4250’	Yes	Full service ski area, additional fee required
Tilly Jane: 30 miles south of Hood River off OR 35	X B	No	3750’	No	None
Timberline: 6 miles north of Gov. Camp off US 26	A X** B	A	6000’	Yes	Full service ski area, fee required
Trillium Lake: 3 miles east of Gov. Camp on US 26	X B M	X	3700’	Yes	Intermittent grooming, toilet near lake
White River BSA: 4 miles north of US 26 on OR 35	X B	No	4200’	No	Boy Scout Lodge
White River East: 4 miles north of US 26 on OR 35	X M	No	4100’	Yes	None
White River West: 4 miles north of US 26 on OR 35	X B	No	4200’	Yes	Toilet

* No Sno-Park Pass required, valid recreation pass is required

** Expert only due to ungroomed/steep descent