



POTAMUS

Ecosystem

Analysis

Map Appendix

Umatilla National Forest

October 2004

Figure 2-1. Subsection map	4
Figure 2-2. Land-type Associations.....	5
Figure 2-3. Soil Resource Inventory.....	6
Figure 2-4. Harvest unit.....	7
Figure 3-1. Madison Butte and Arbuckle SNOTEL Sites, Annual Precipitation and 30-Year Averages, 1961-1991.....	8
Figure 3-2. Decadal Hydrograph at NFJD Monument Gage.....	8
Figure 3-3. Percent annual runoff at NFJD River Gages.....	9
Figure 3-4. Miles of stream by Strahler stream order.....	9
Figure 3-5. Water Quality and Aquatic Monitoring Locations.....	10
Figure 3-6. Water Temperatures on Potamus Creek.....	10
Figure 4-1. Chinook Distribution and habitat use in the Potamus Watershed and surrounding area	11
Map 5-1. Upland forest potential vegetation groups of the Potamus analysis area.....	12
Map 5-2. Large wildfires (red color) occurring in the Potamus analysis area (green color).....	12
Map 5-3. Existing (upper) and historical (lower) cover types of the Potamus analysis area.....	13
Map 5-4. Existing and historical forest density classes of the Potamus analysis area.....	14
Map 5-5. Existing and historical forest size classes of the Potamus analysis area.....	14
Map 5-6. Existing and historical forest structural classes of the Potamus analysis area.....	14
Map 5-7. Existing and historical forest canopy layering of the Potamus analysis area.....	14
Map 5-8. Existing susceptibility ratings for bark beetles in ponderosa pine, defoliators, Douglas- fir beetle, and fir engraver.....	14
Map 5-9. Historical susceptibility ratings for bark beetles in ponderosa pine, defoliators, Douglas-fir beetle, and fir engraver.....	14
Map 6-1. Historical fire regimes of the Potamus analysis area.....	15
Map 6-2. Large wildfires (red color) occurring within the Potamus analysis area (green).....	15
Map 6-3. Existing (upper) and historical (lower) canopy fuel loading for the Potamus analysis area.....	17
Map 6-4. Existing (upper) and historical (lower) fuel models for the Potamus analysis area.....	18
Map 6-5. Existing (upper) and historical (lower) fire regime condition classes for the Potamus analysis area.....	19
Map 7-10. Inventoried Noxious Weed Sites in the Potamus Watershed.....	20
Map 7-11. Noxious weed susceptibility and risk rating for the Potamus watershed.....	21
Map 8-1. Reference (1939) habitats in the Potamus analysis area.....	22
Map 8-2. Current (2004) habitats in the Potamus analysis area.....	23
Map 8-3. Reference (1939) structural condition in the Potamus analysis area.....	24
Map 8-4. Current (2004) structural condition in the Potamus analysis area.....	25
Map 8-5. Forest Plan dedicated (C1) and managed (C2) old growth areas in the analysis area.....	26
Map 8-6. Reference (1939) old forest habitats with connectivity in the Potamus analysis area.....	27
Map 8-7. Current (2004) old forest habitats with connectivity in the Potamus analysis area.....	28
Map 8-8. Aspen stands in the Potamus analysis area.....	29
Map 8-9. Reference (1939) Rocky Mountain Elk habitat availability in the Potamus analysis area.....	30
Map 8-10. Current (2004) Rocky Mountain Elk habitat availability in the Potamus analysis area.	31
Map 8-11. Elk habitat effectiveness (HEI) analysis areas in the Potamus watershed.....	32
Map 8-12. Reference (1939) Pileated woodpecker habitat availability in the Potamus analysis area.....	33

Map 8-13. Current (2004) Pileated woodpecker habitat availability in the Potamus analysis area. 34

Map 8-14. Reference (1939) Northern three-toed woodpecker habitat availability in the Potamus analysis area. 35

Map 8-15. Current (2004) Northern three-toed woodpecker habitat availability in the Potamus analysis area. 36

Map 8-16. Reference (1939) Pine marten habitat availability in the Potamus analysis area. 37

Map 8-17. Current (2004) Pine marten habitat availability in the Potamus analysis area. 38

Map 8-18. Reference (1939) Wolverine foraging habitat availability in the Potamus analysis area. 39

Map 8-19. Current (2004) Wolverine foraging habitat availability in the Potamus analysis area. 40

Map 8-20. Reference (1939) Northern goshawk habitat availability in the Potamus analysis area. 41

Map 8-21. Current (2004) Northern goshawk habitat availability in the Potamus analysis area. 42

SOILS & GEOLOGY

SUBSECTIONS

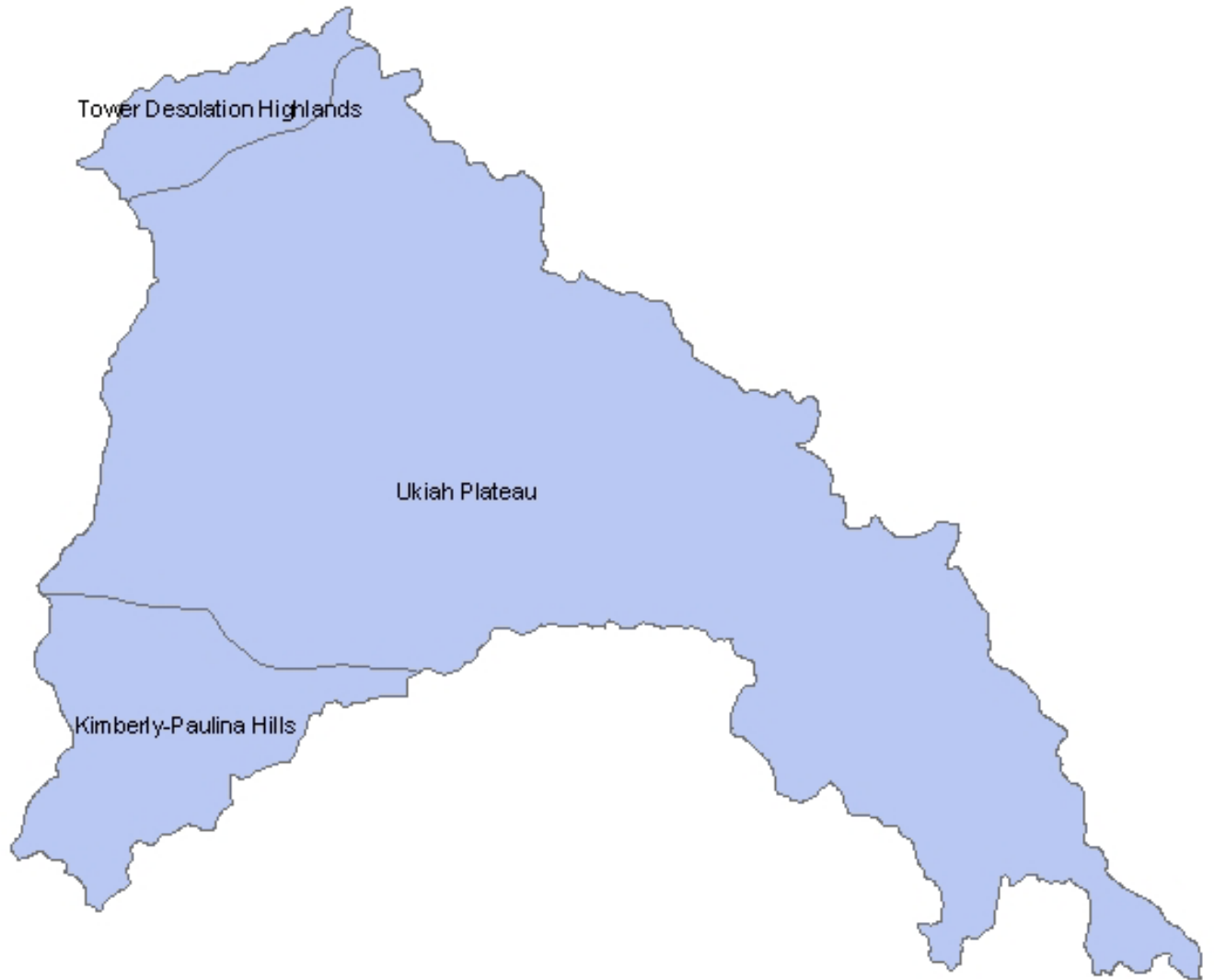


Figure 2-1. Subsection map

LAND TYPE ASSOCIATIONS

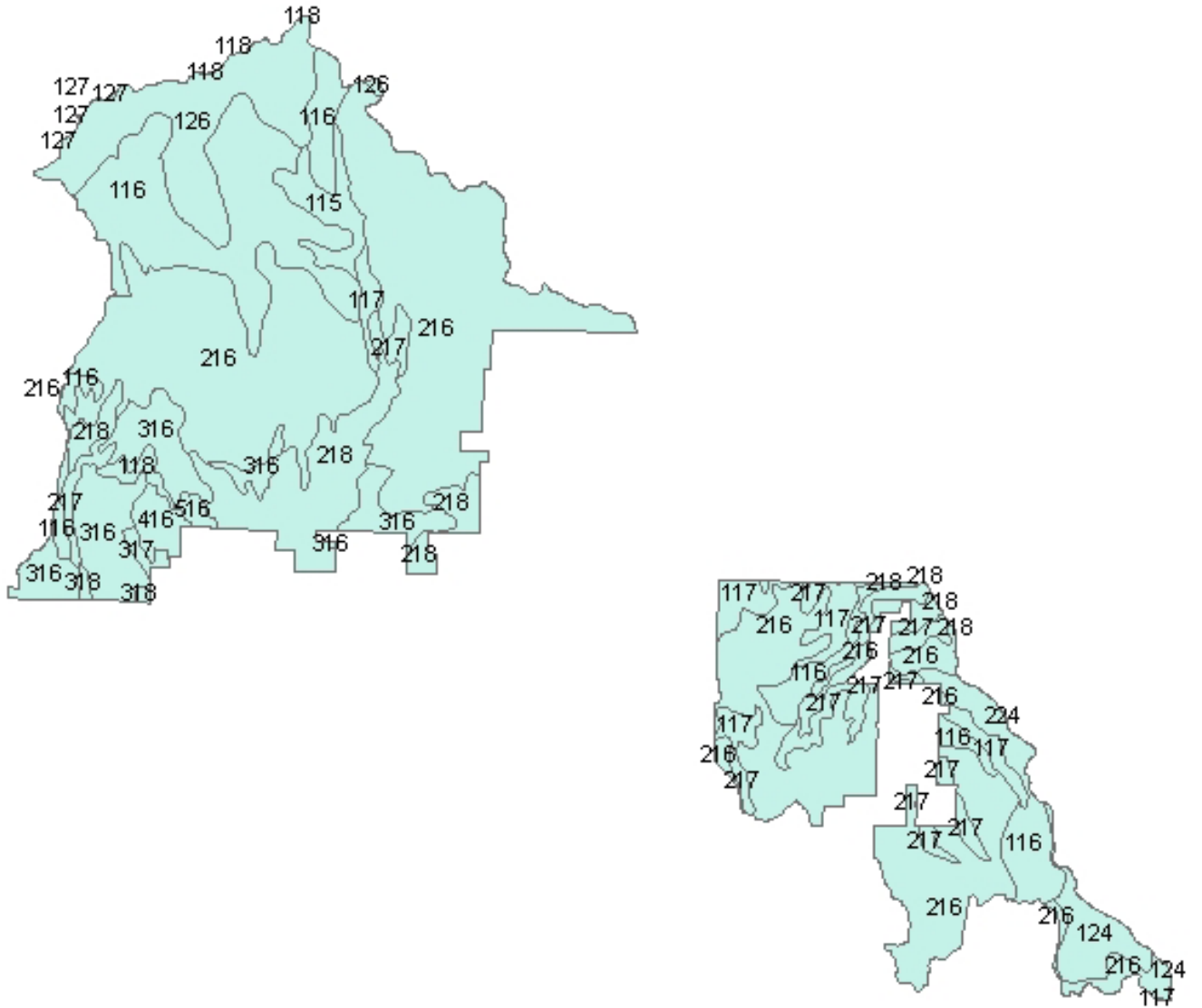


Figure 2-2. Land-type Associations

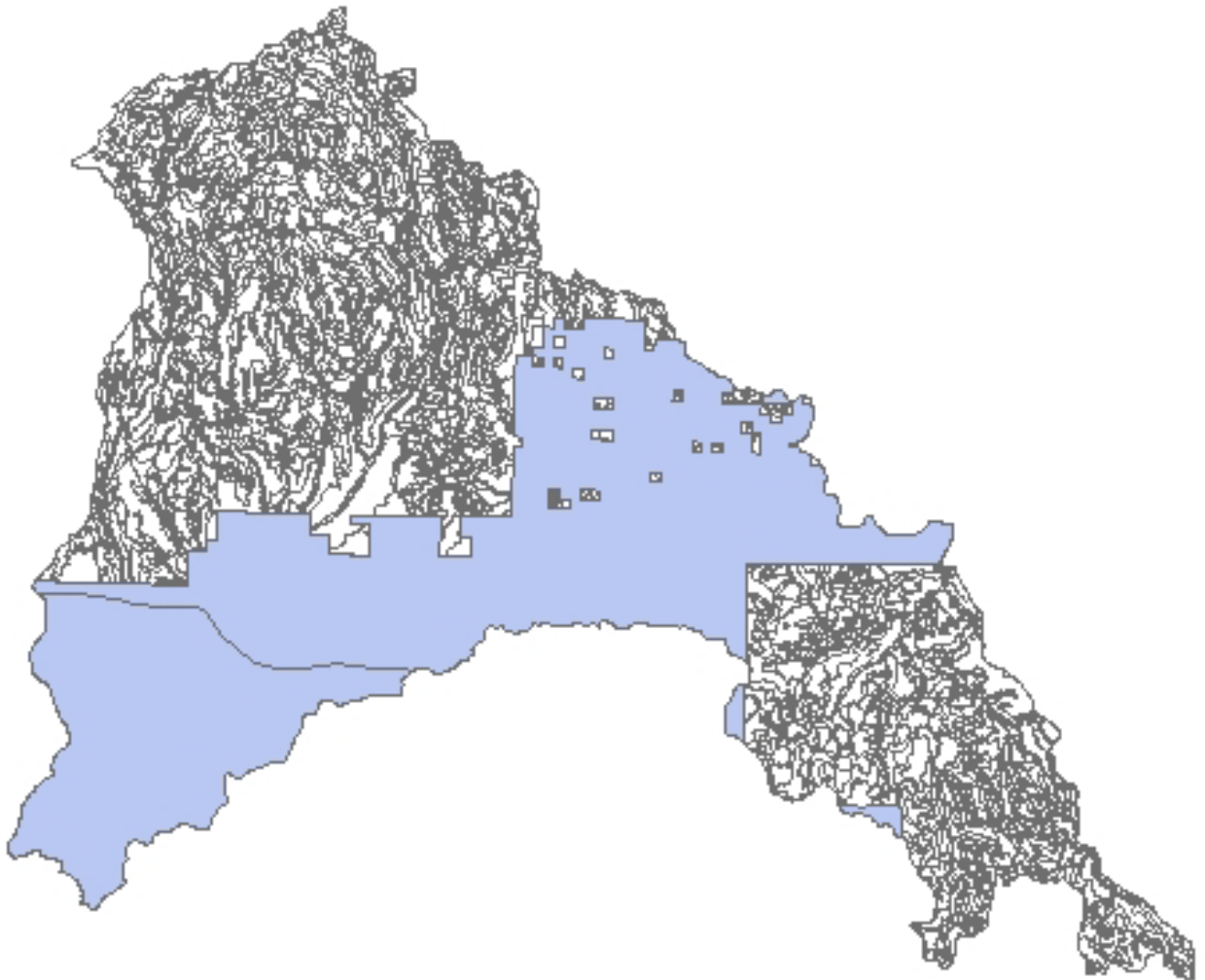


Figure 2-3. Soil Resource Inventory

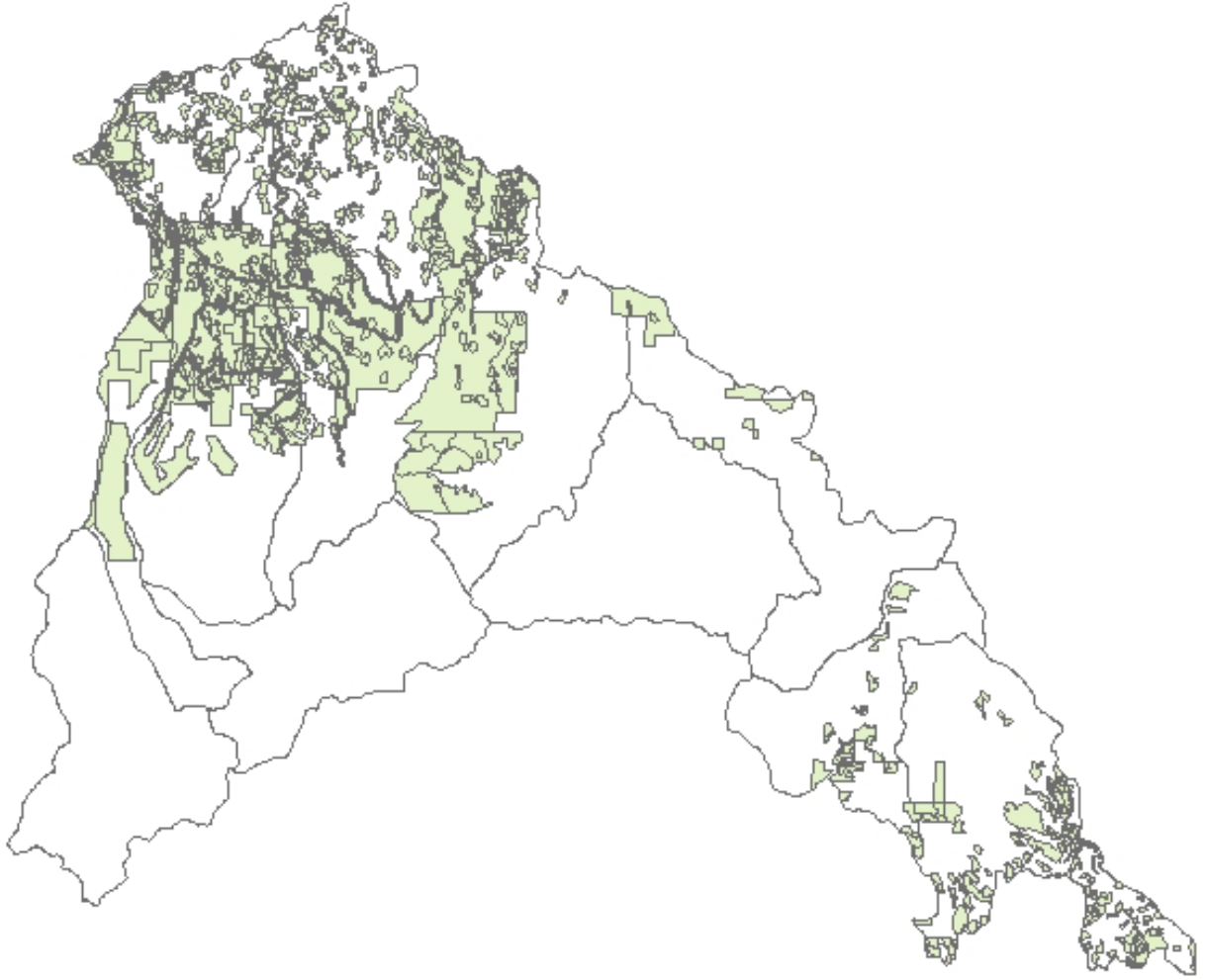


Figure 2-4. Harvest unit

POTAMUS ECOSYSTEM ANALYSIS

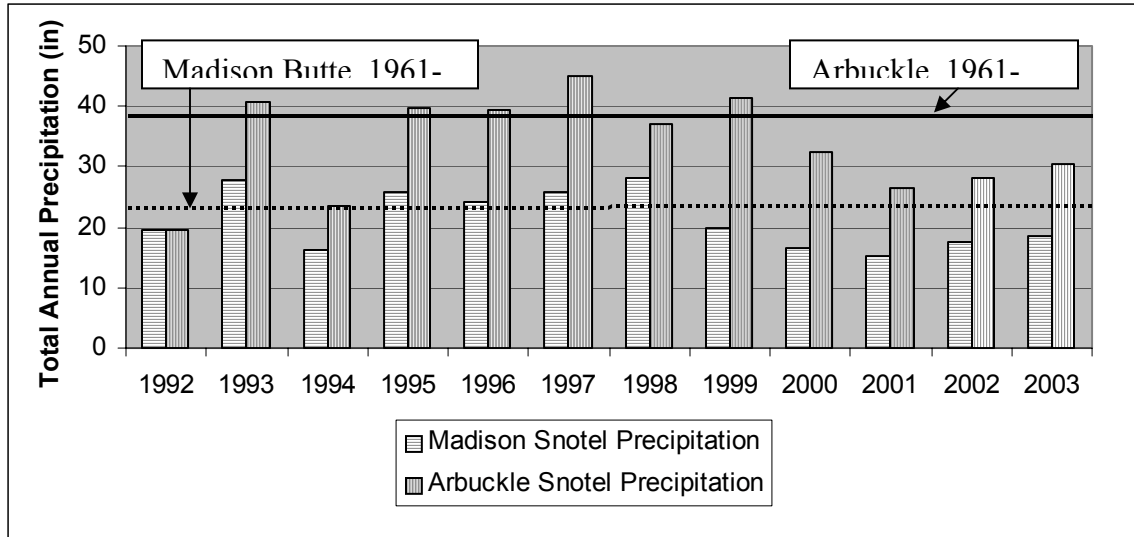


Figure 3-1. Madison Butte and Arbuckle SNOTEL Sites, Annual Precipitation and 30-Year Averages, 1961-1991.

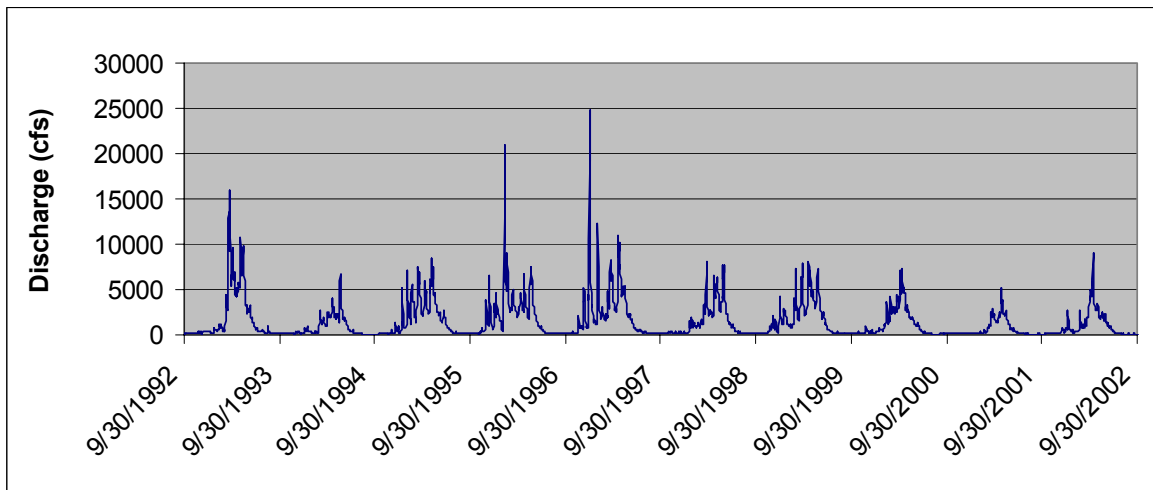


Figure 3-2. Decadal Hydrograph at NFJD Monument Gage.

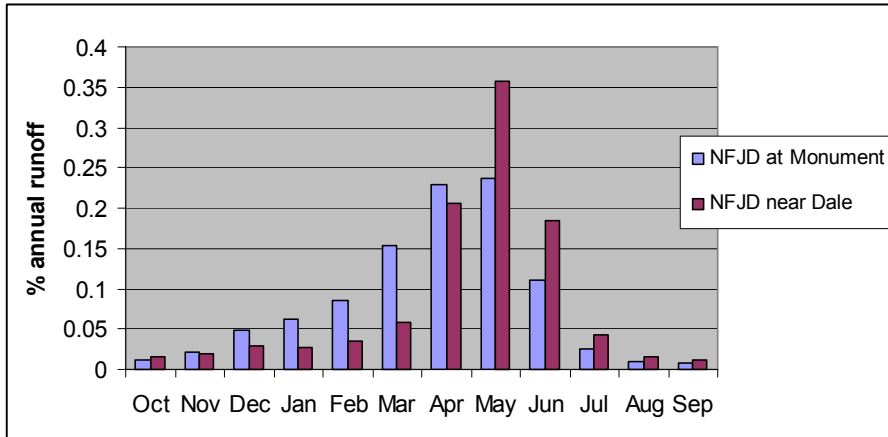


Figure 3-3. Percent annual runoff at NFJD River Gages.

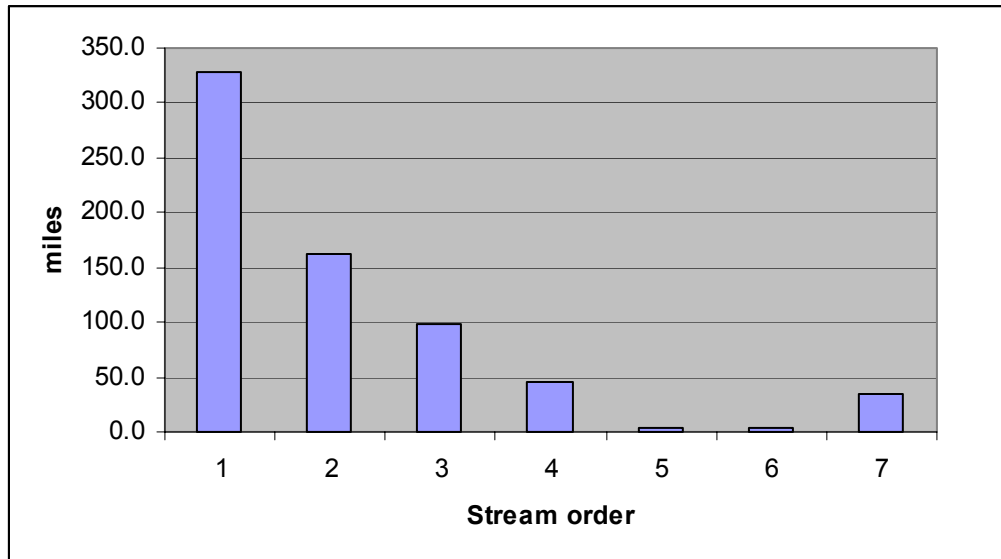


Figure 3-4. Miles of stream by Strahler stream order.

POTAMUS ECOSYSTEM ANALYSIS

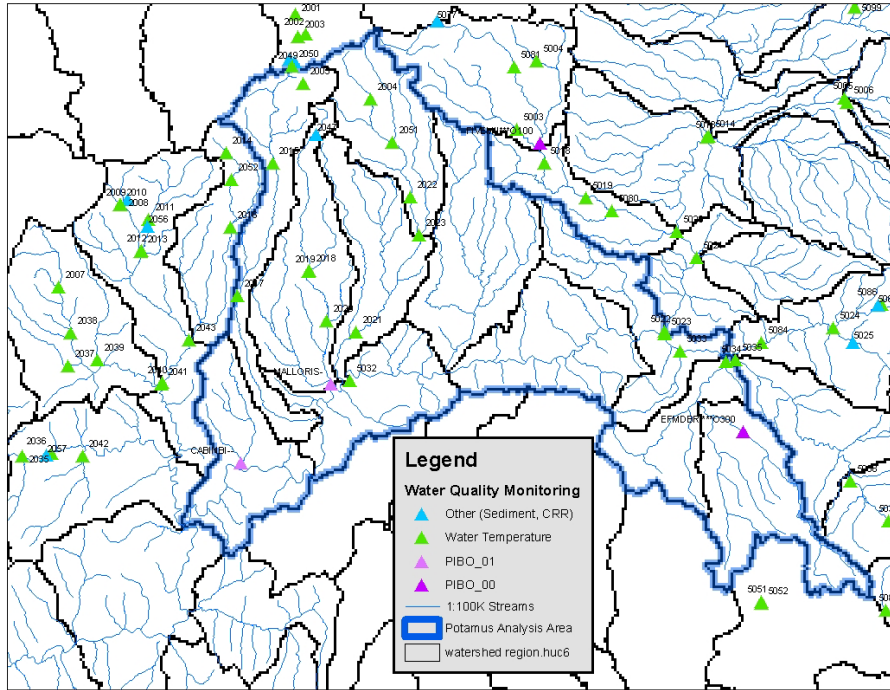


Figure 3-5. Water Quality and Aquatic Monitoring Locations

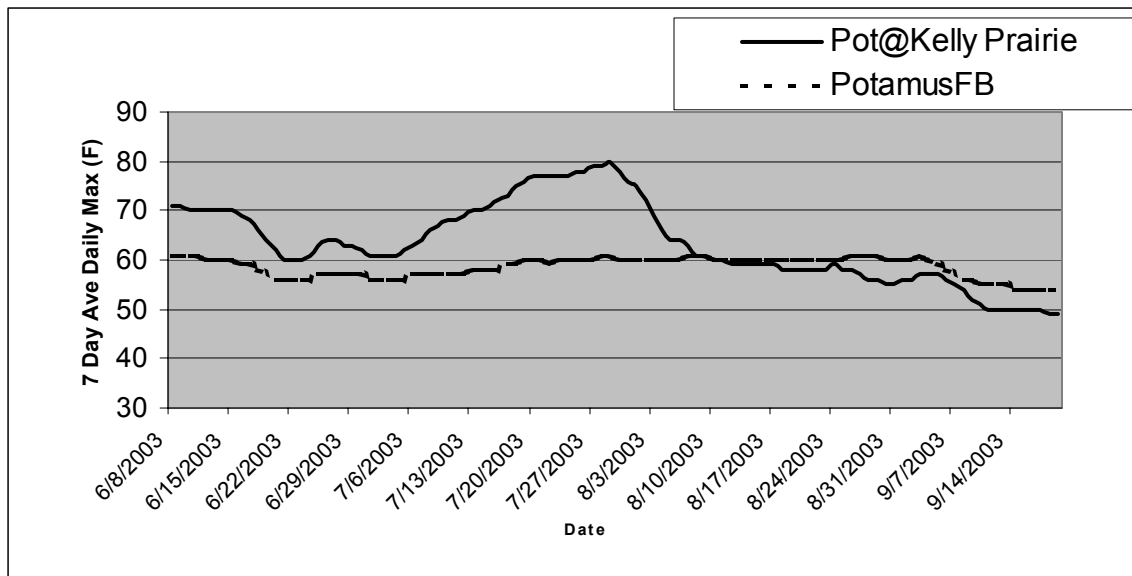


Figure 3-6. Water Temperatures on Potomus Creek.

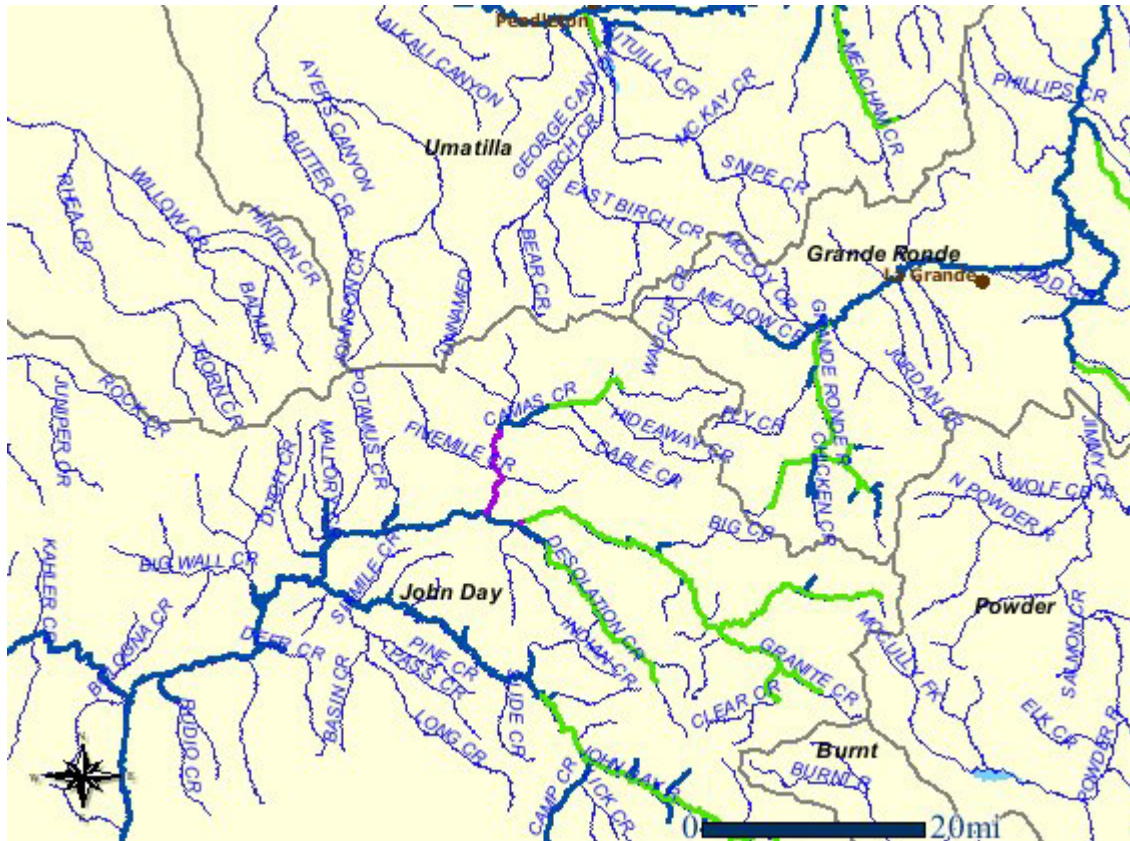
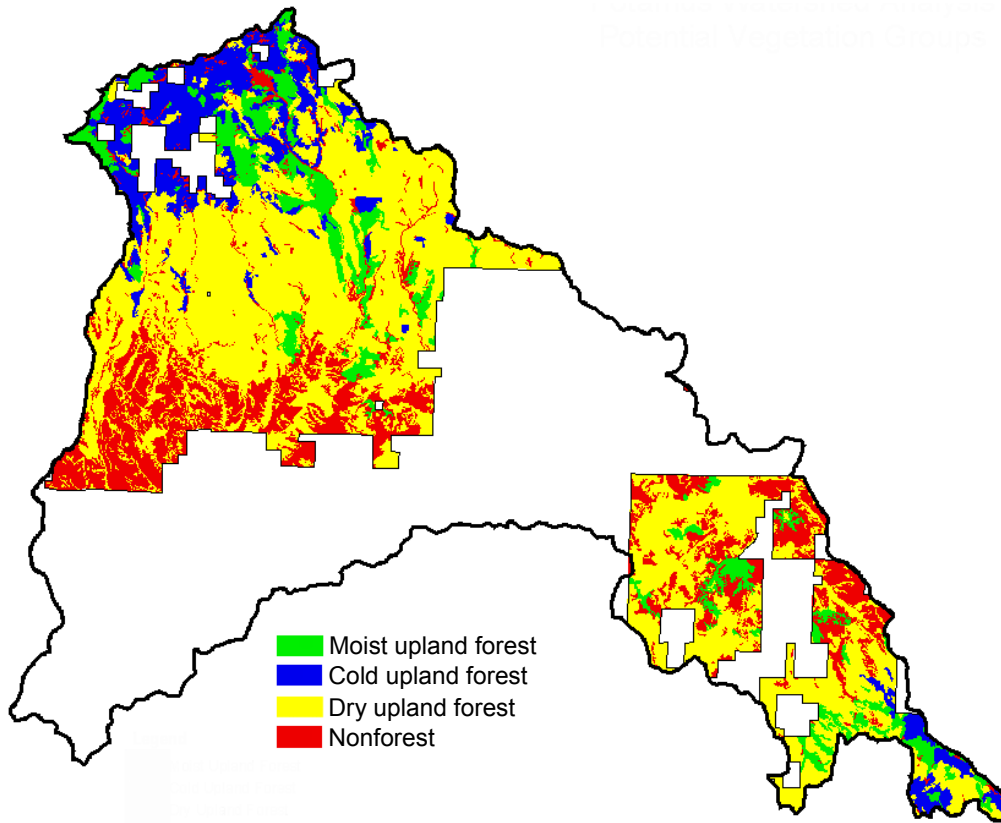
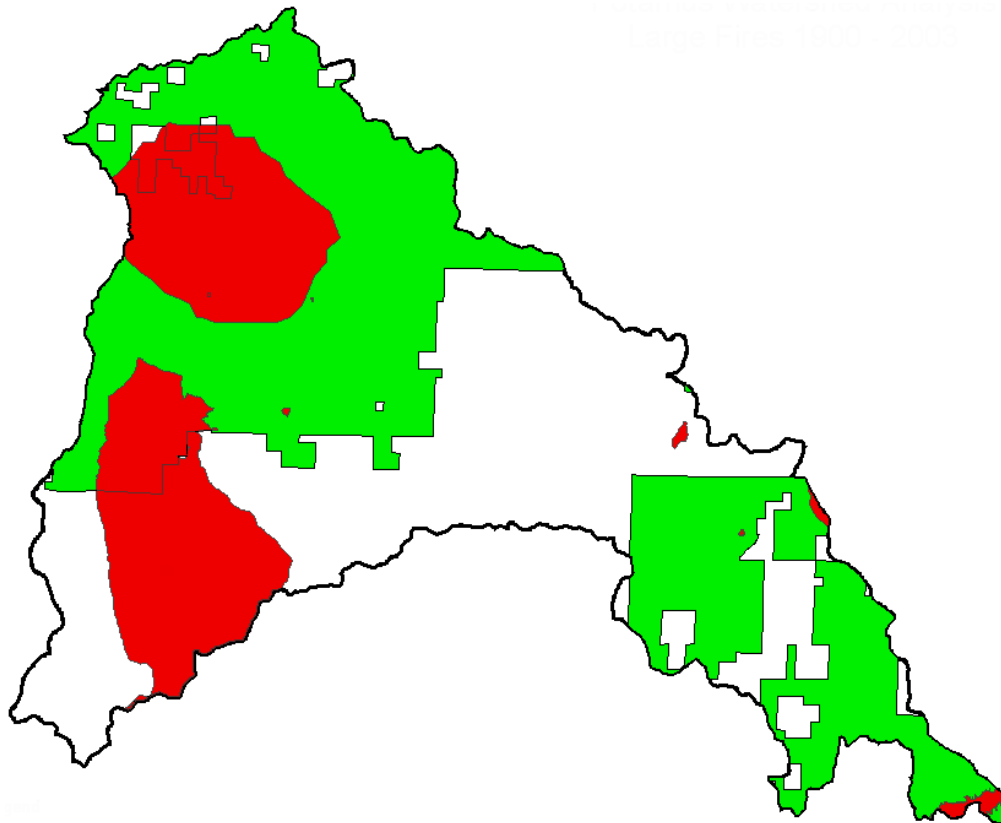


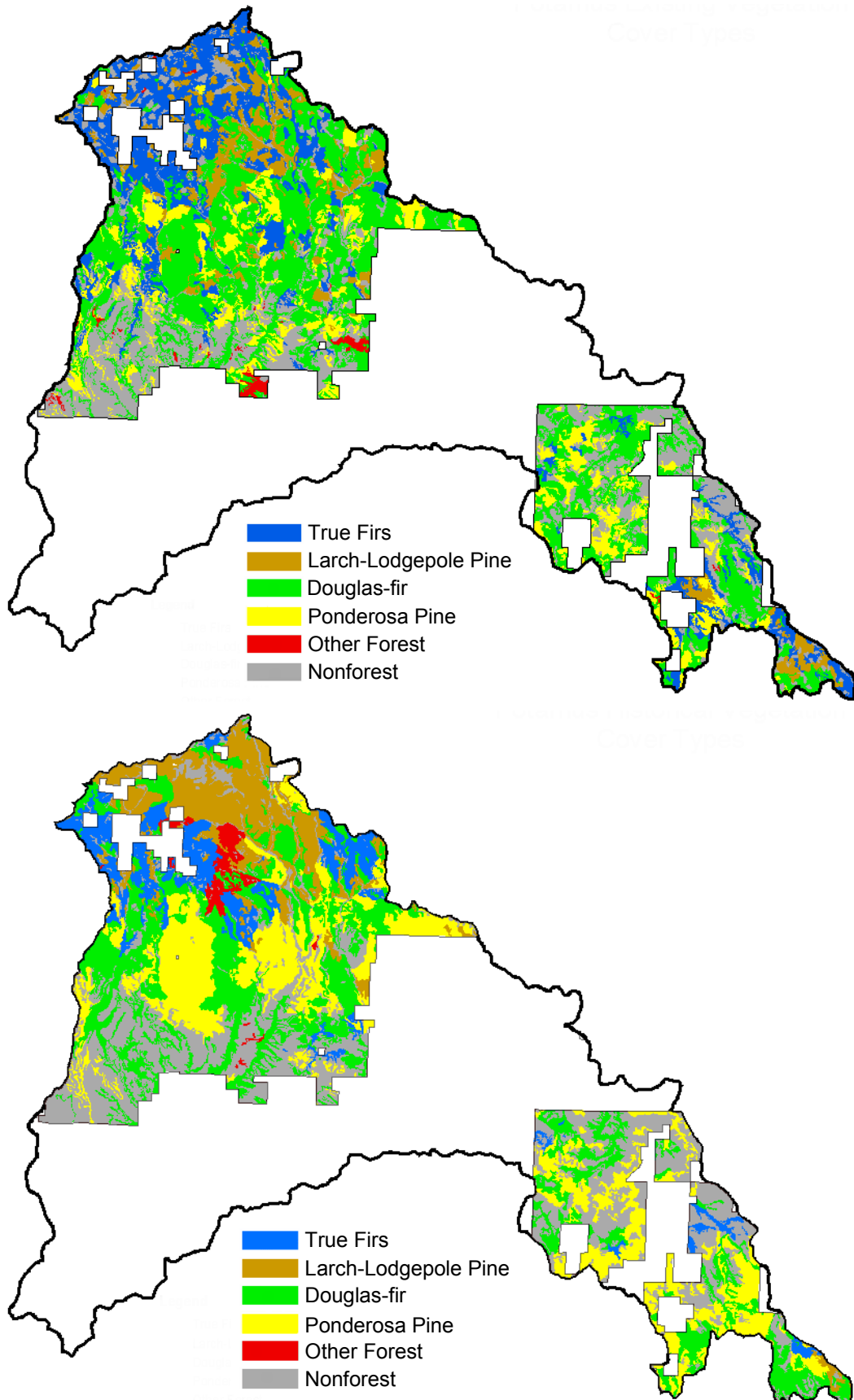
Figure 4-1. Chinook Distribution and habitat use in the Potamus Watershed and surrounding area.



Map 5-1. Upland forest potential vegetation groups of the Potamus analysis area.



Map 5-2. Large wildfires (red color) occurring in the Potamus analysis area (green color).



Map 5-3. Existing (upper) and historical (lower) cover types of the Potamus analysis area.

Map 5-4. Existing and historical forest density classes of the Potamus analysis area.

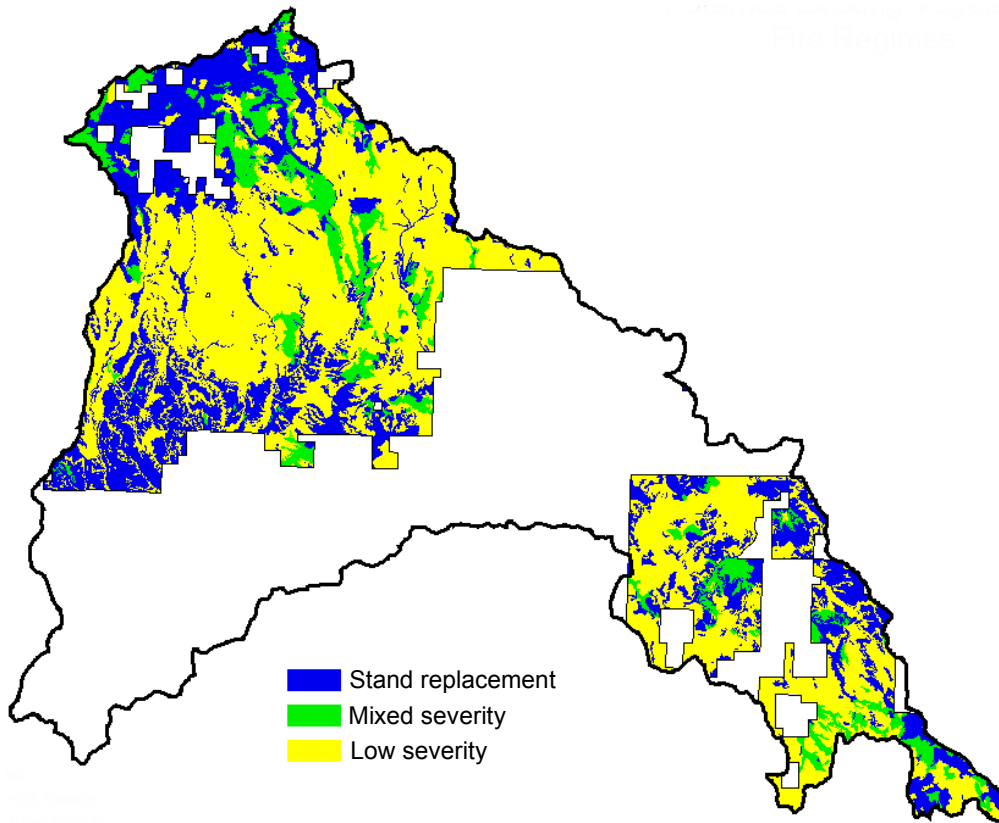
Map 5-5. Existing and historical forest size classes of the Potamus analysis area.

Map 5-6. Existing and historical forest structural classes of the Potamus analysis area.

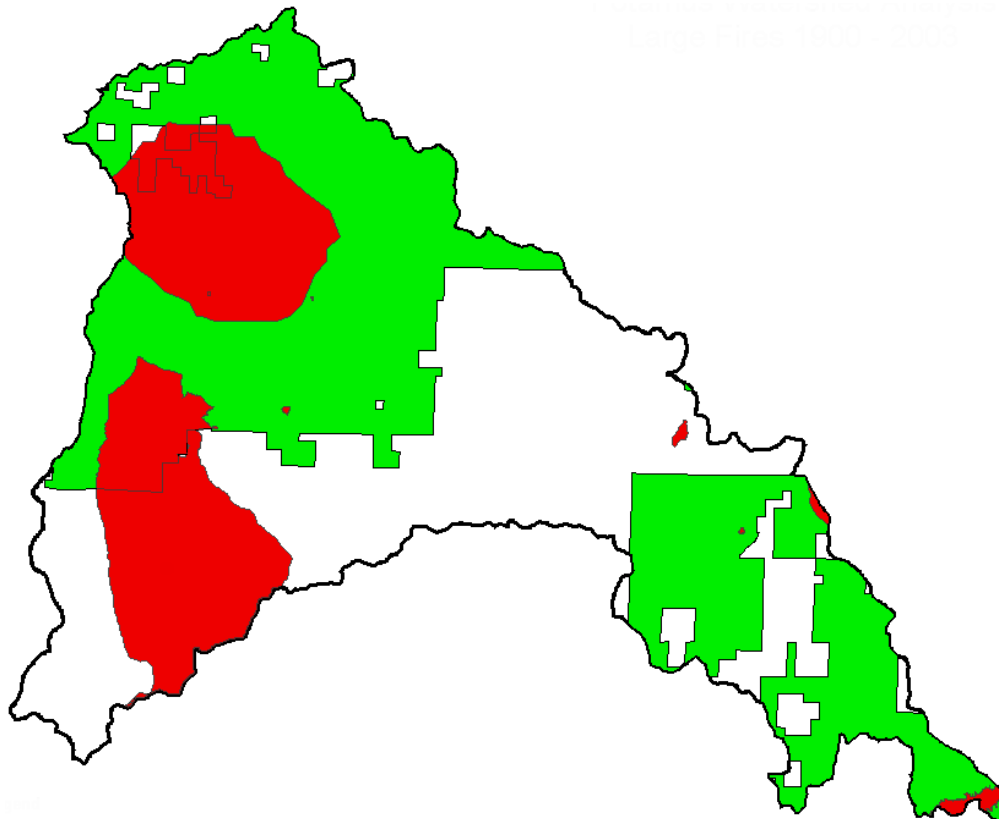
Map 5-7. Existing and historical forest canopy layering of the Potamus analysis area.

Map 5-8. Existing susceptibility ratings for bark beetles in ponderosa pine, defoliators, Douglas-fir beetle, and fir engraver.

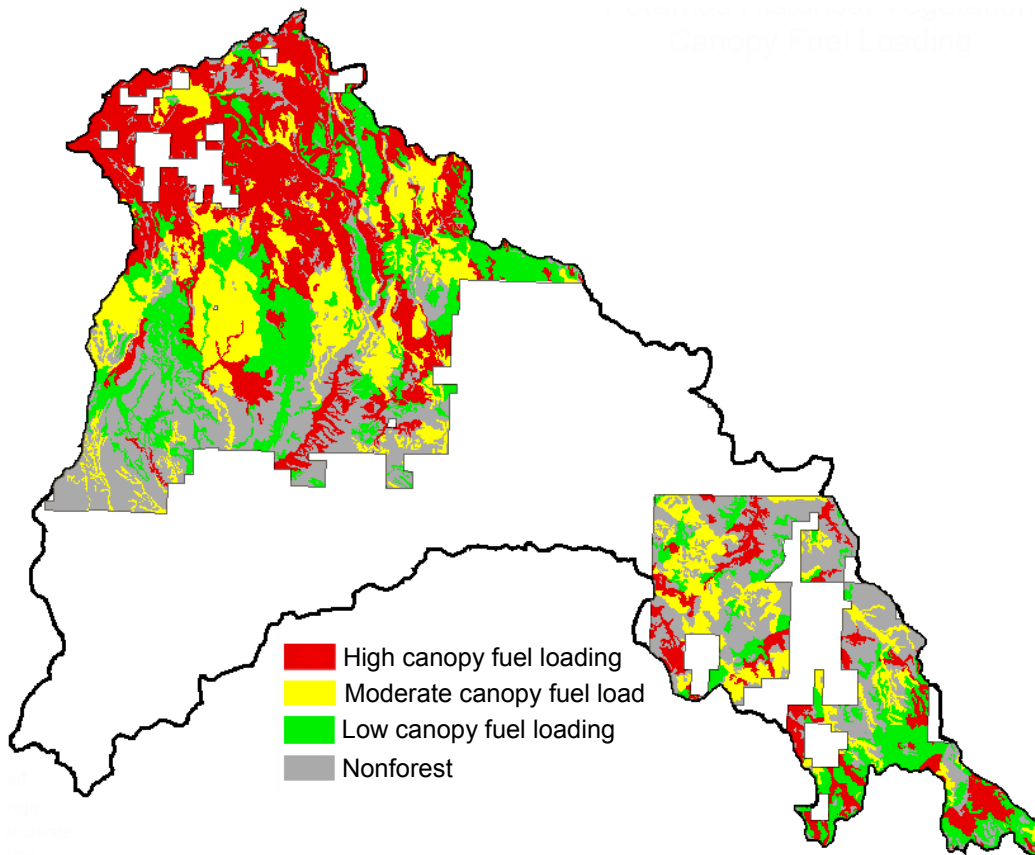
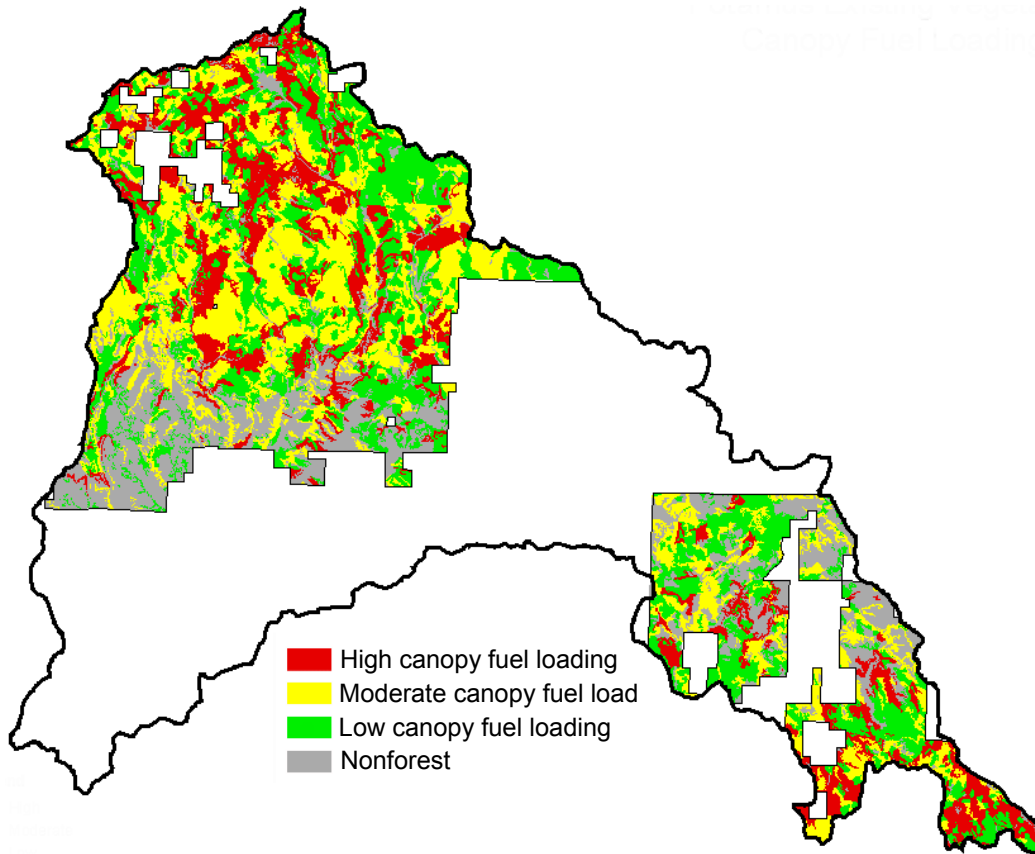
Map 5-9. Historical susceptibility ratings for bark beetles in ponderosa pine, defoliators, Douglas-fir beetle, and fir engraver.



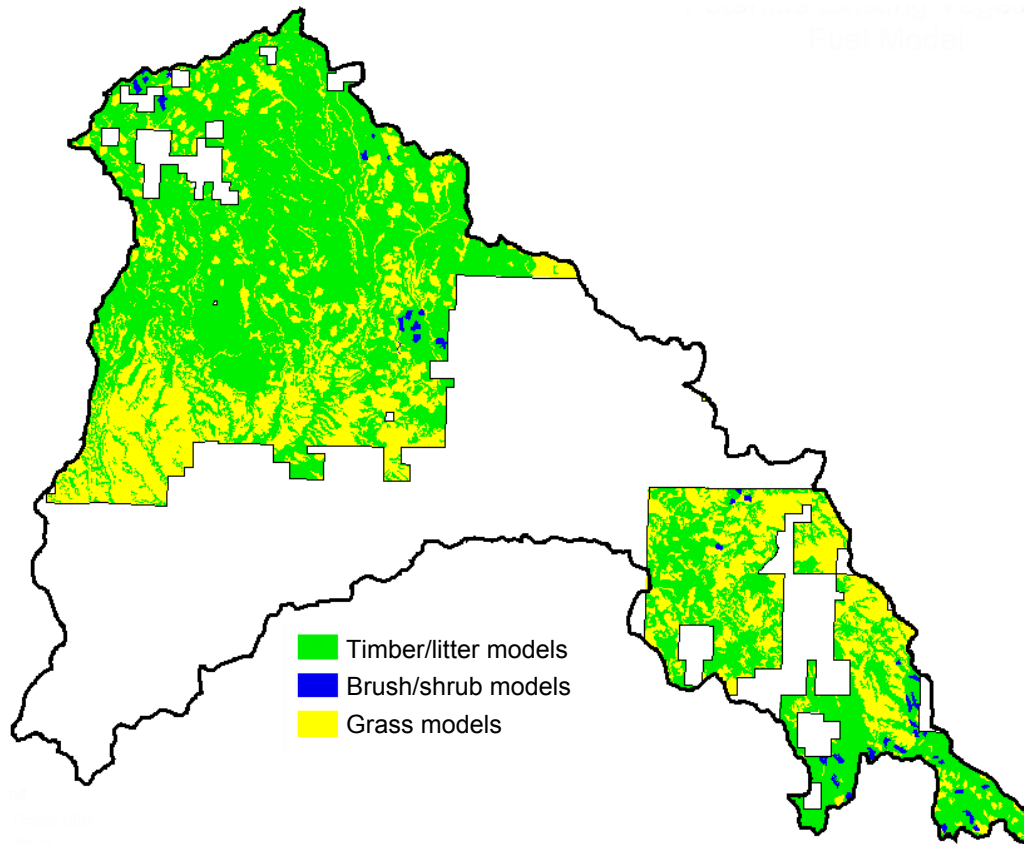
Map 6-1. Historical fire regimes of the Potamus analysis area.

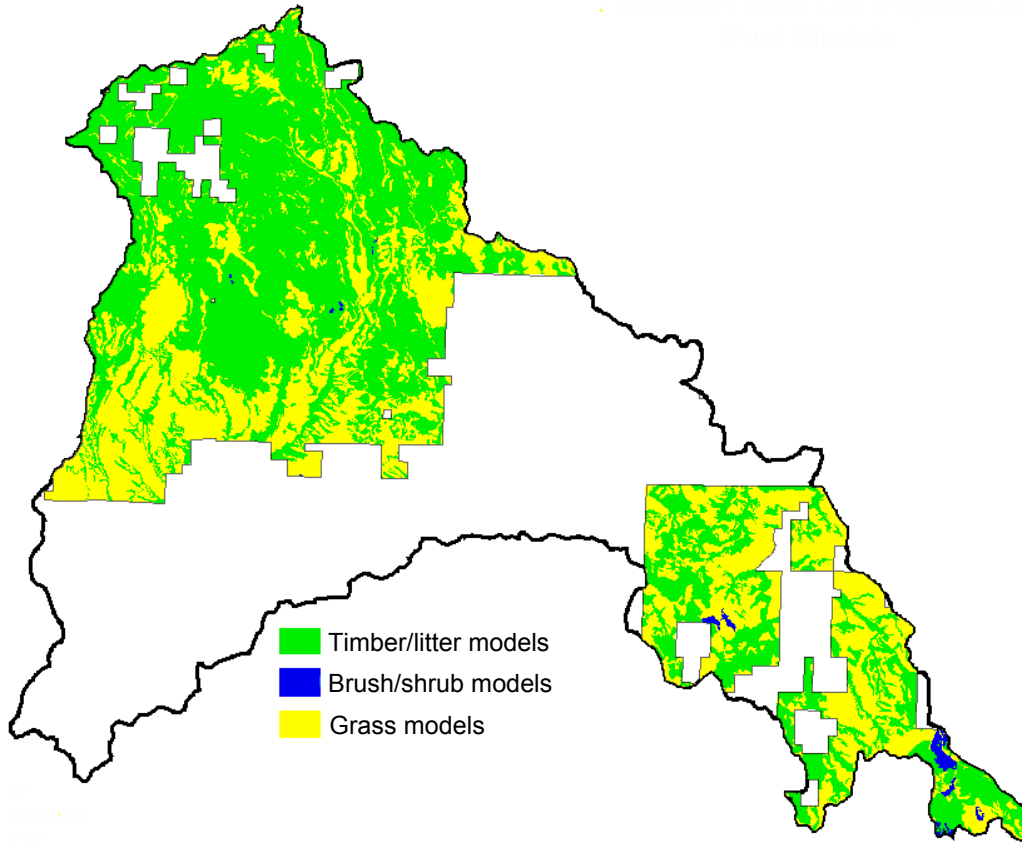


Map 6-2. Large wildfires (red color) occurring within the Potamus analysis area (green).

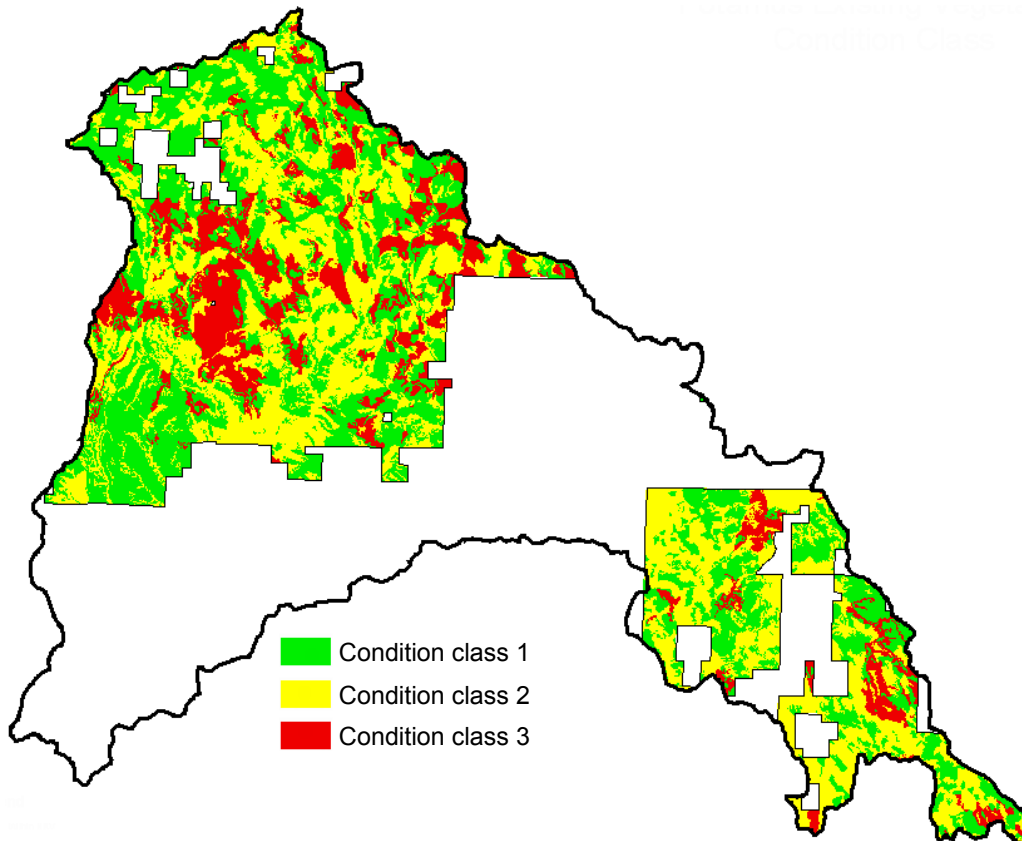


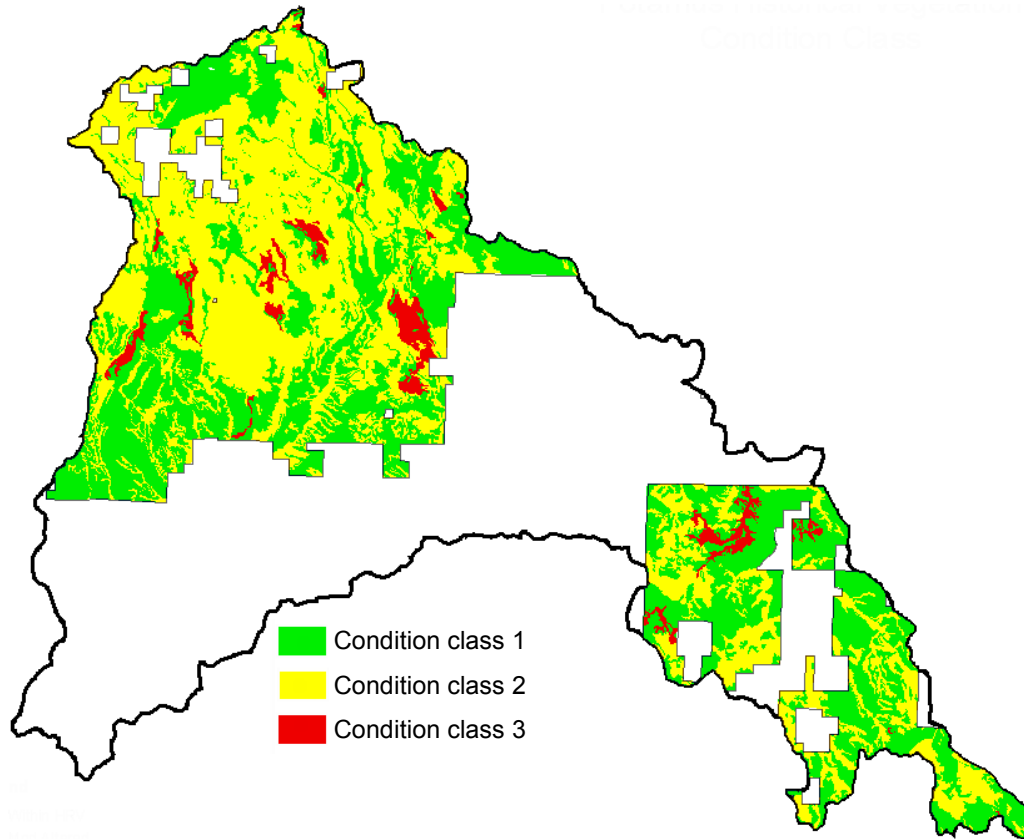
Map 6-3. Existing (upper) and historical (lower) canopy fuel loading for the Potamus analysis area.



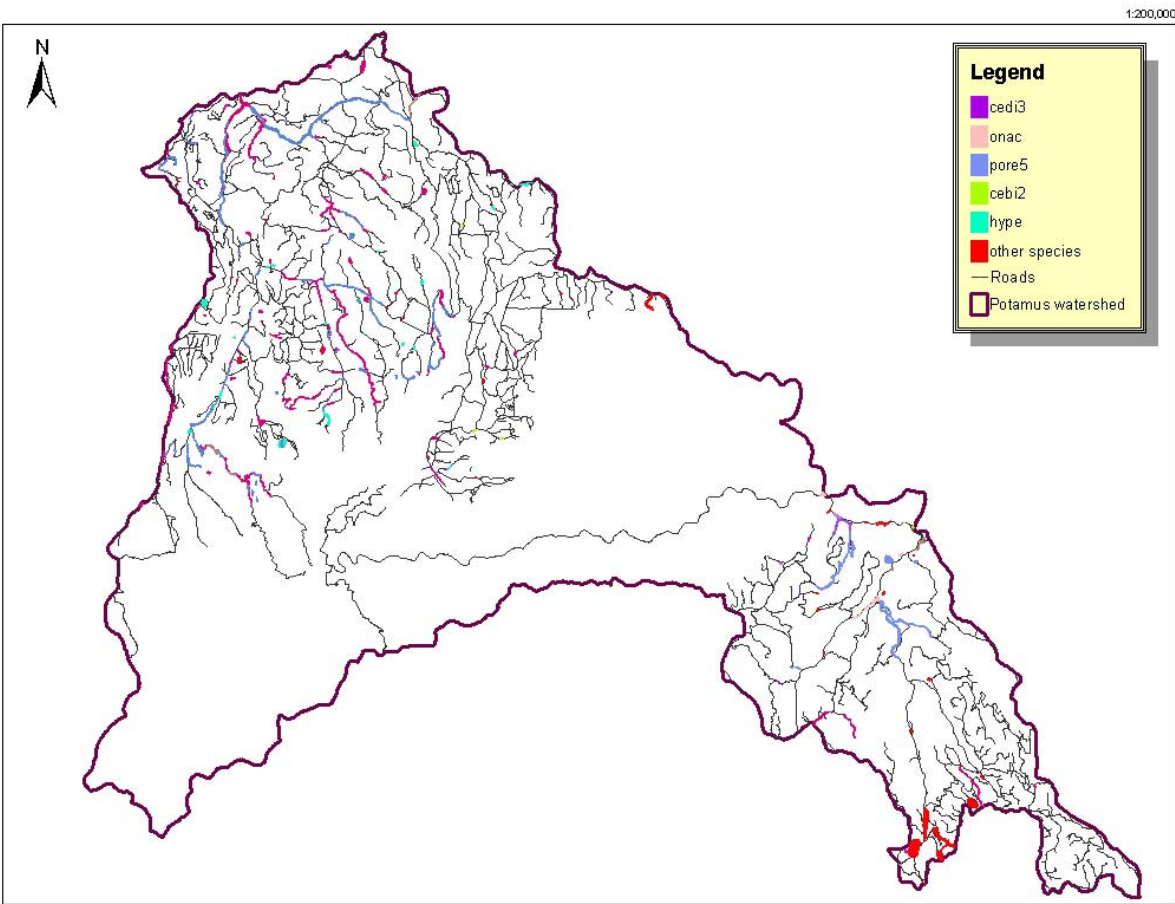


Map 6-4. Existing (upper) and historical (lower) fuel models for the Potamus analysis area.

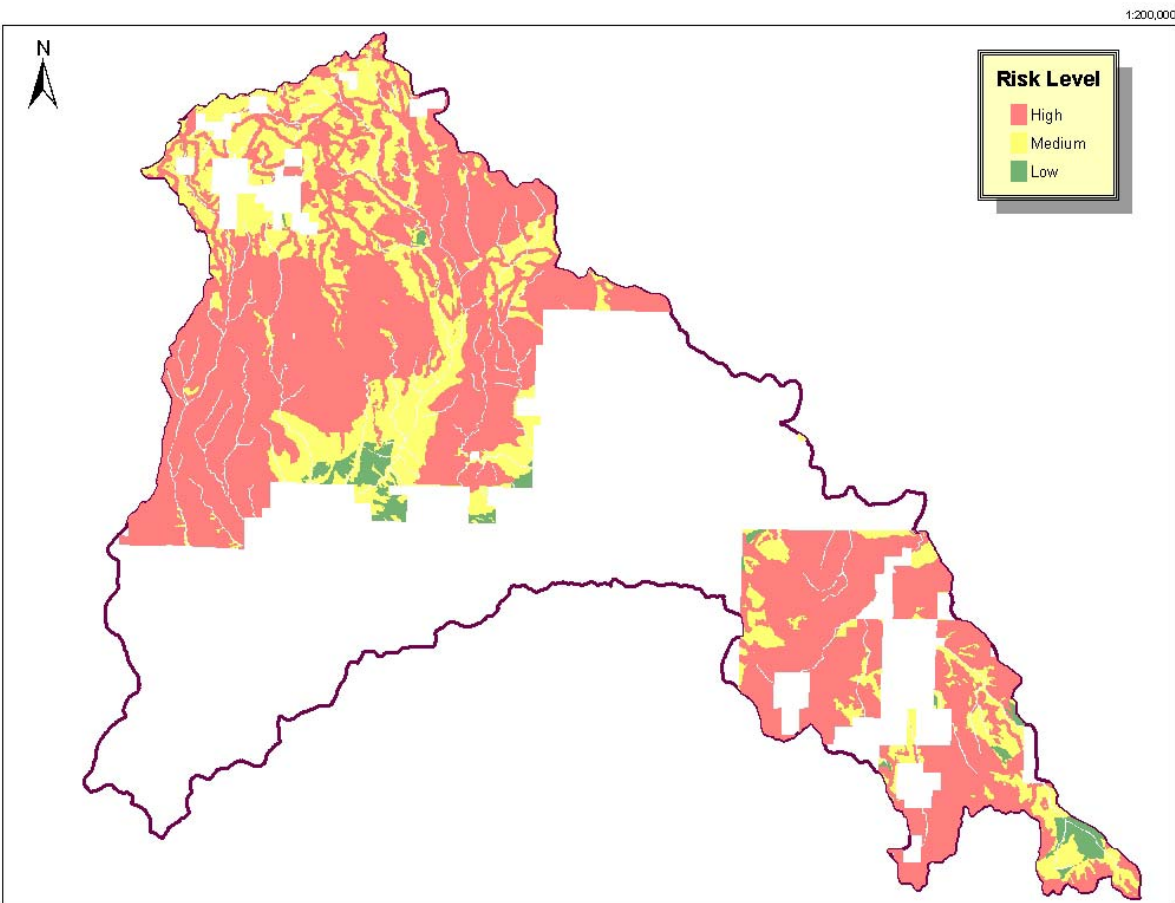




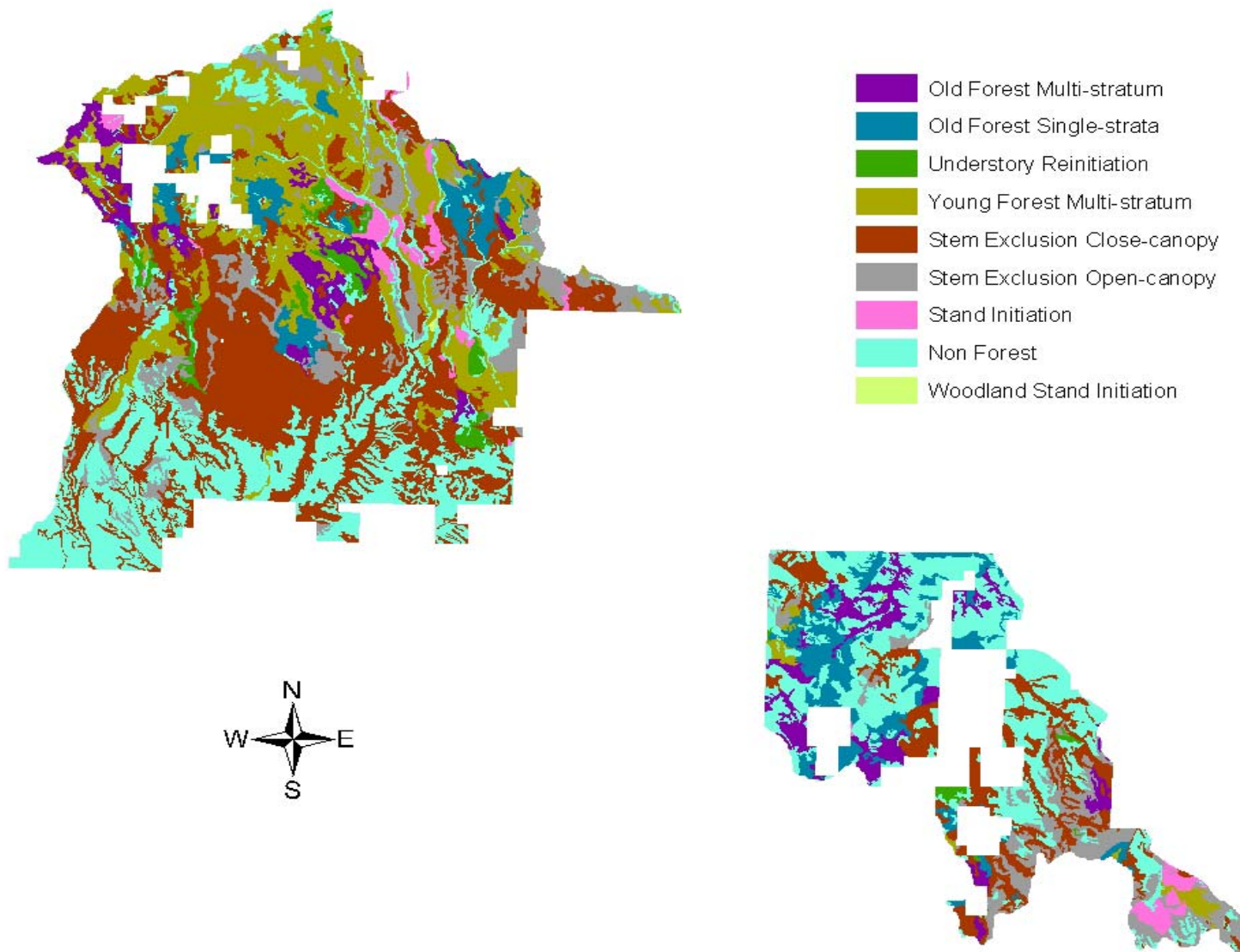
Map 6-5. Existing (upper) and historical (lower) fire regime condition classes for the Potomus analysis area.



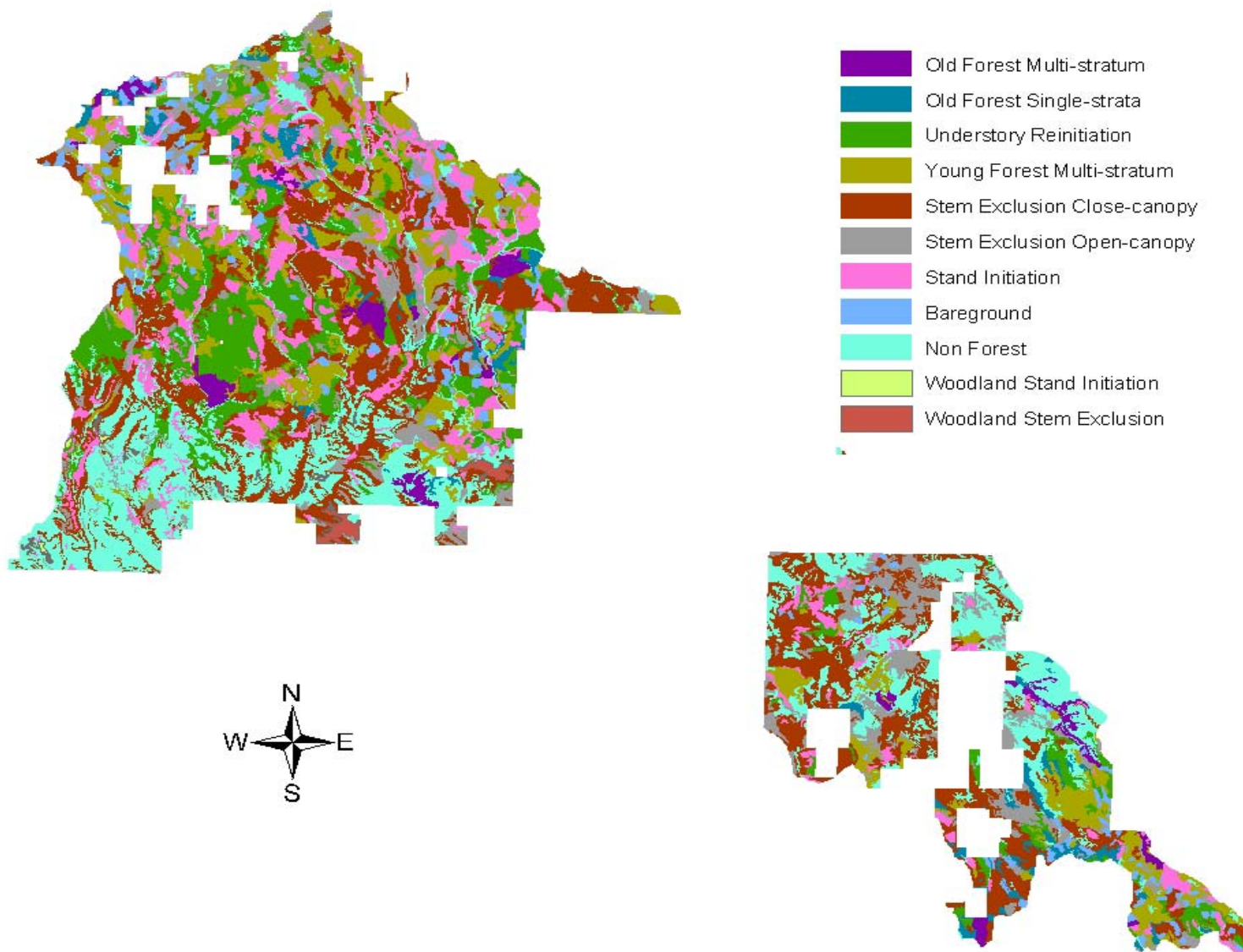
Map 7-10. Inventoried Noxious Weed Sites in the Potamus Watershed



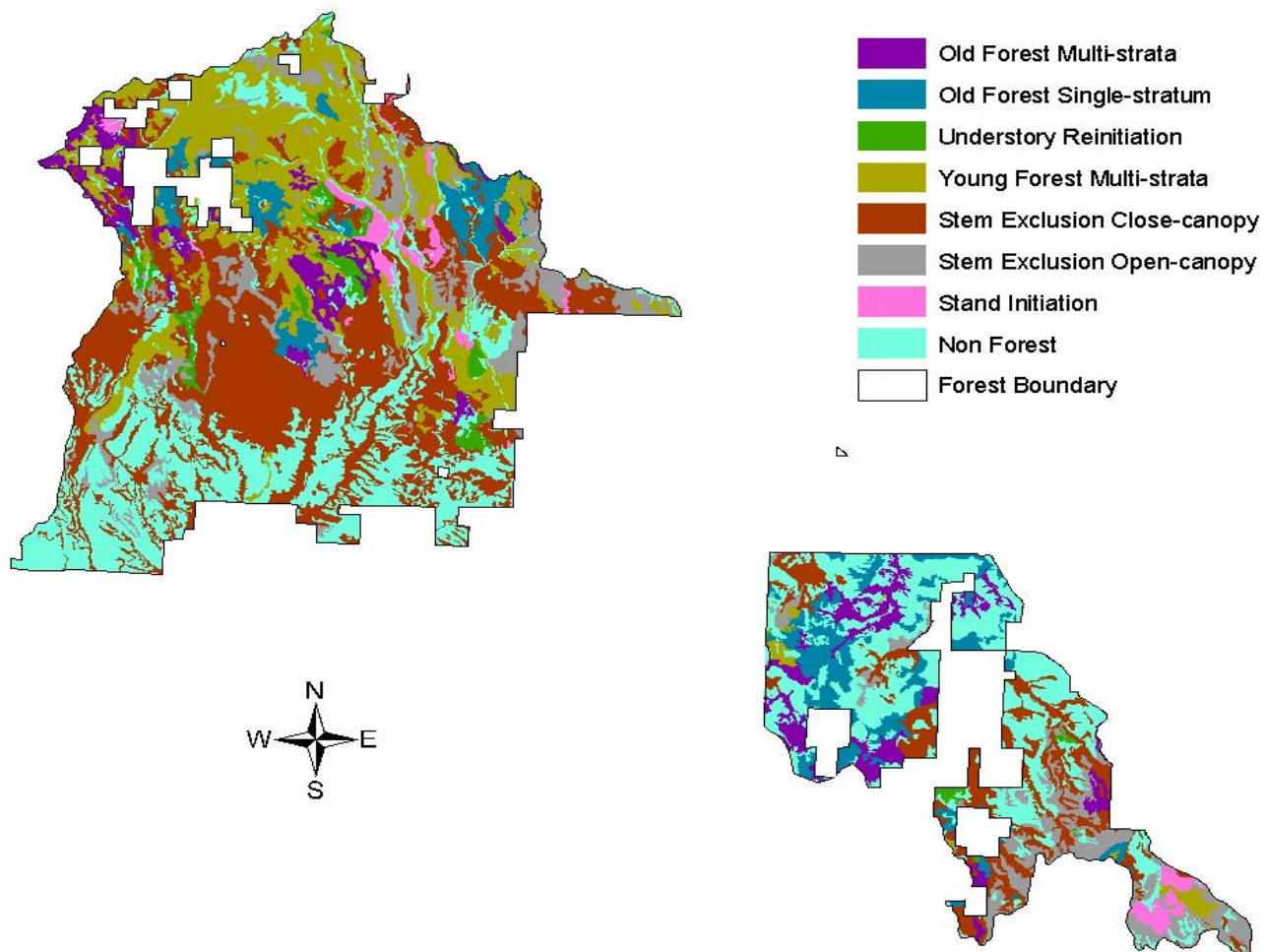
Map 7-11. Noxious weed susceptibility and risk rating for the Potamus watershed.



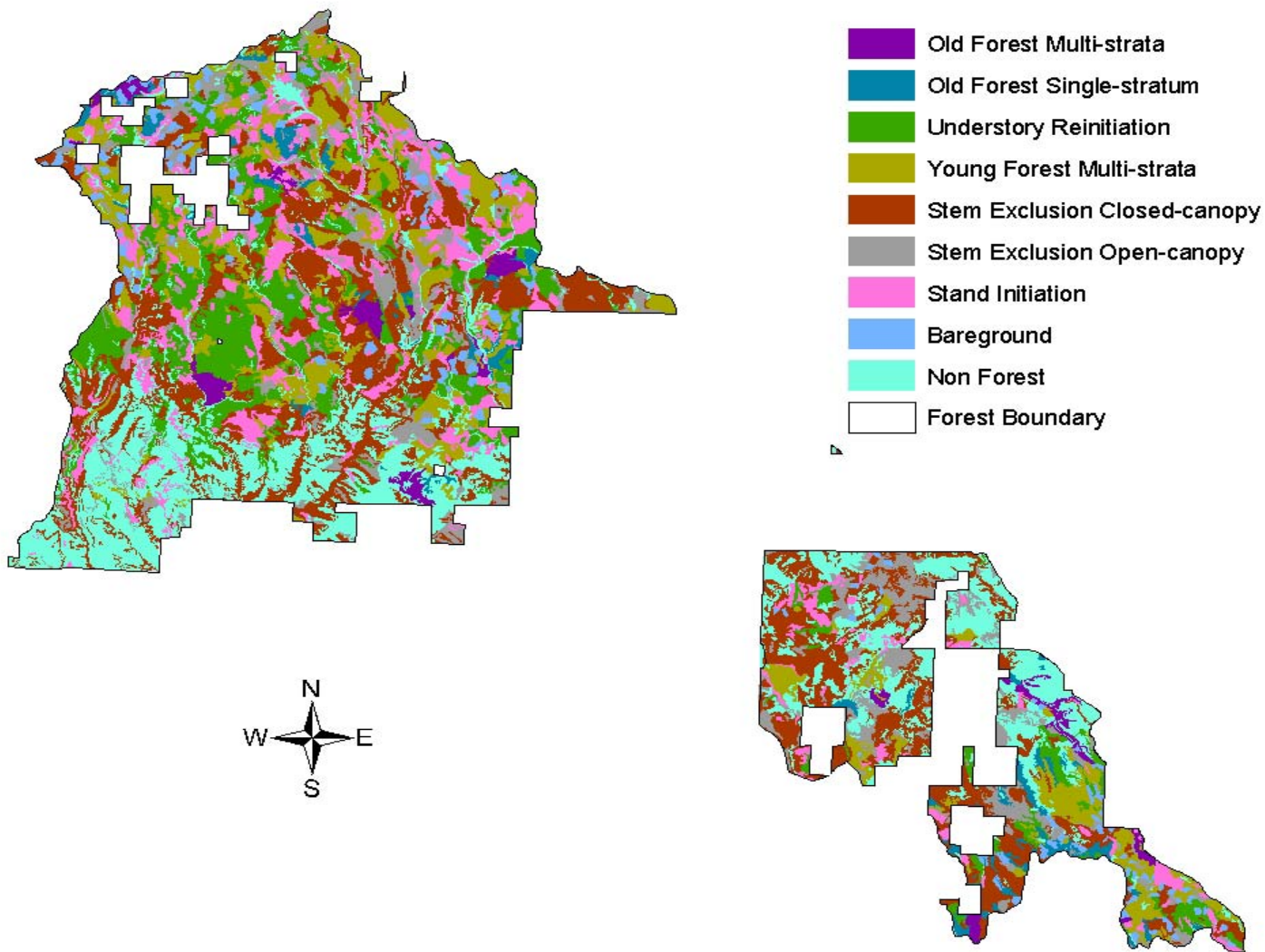
Map 8-1. Reference (1939) habitats in the Potamus analysis area.



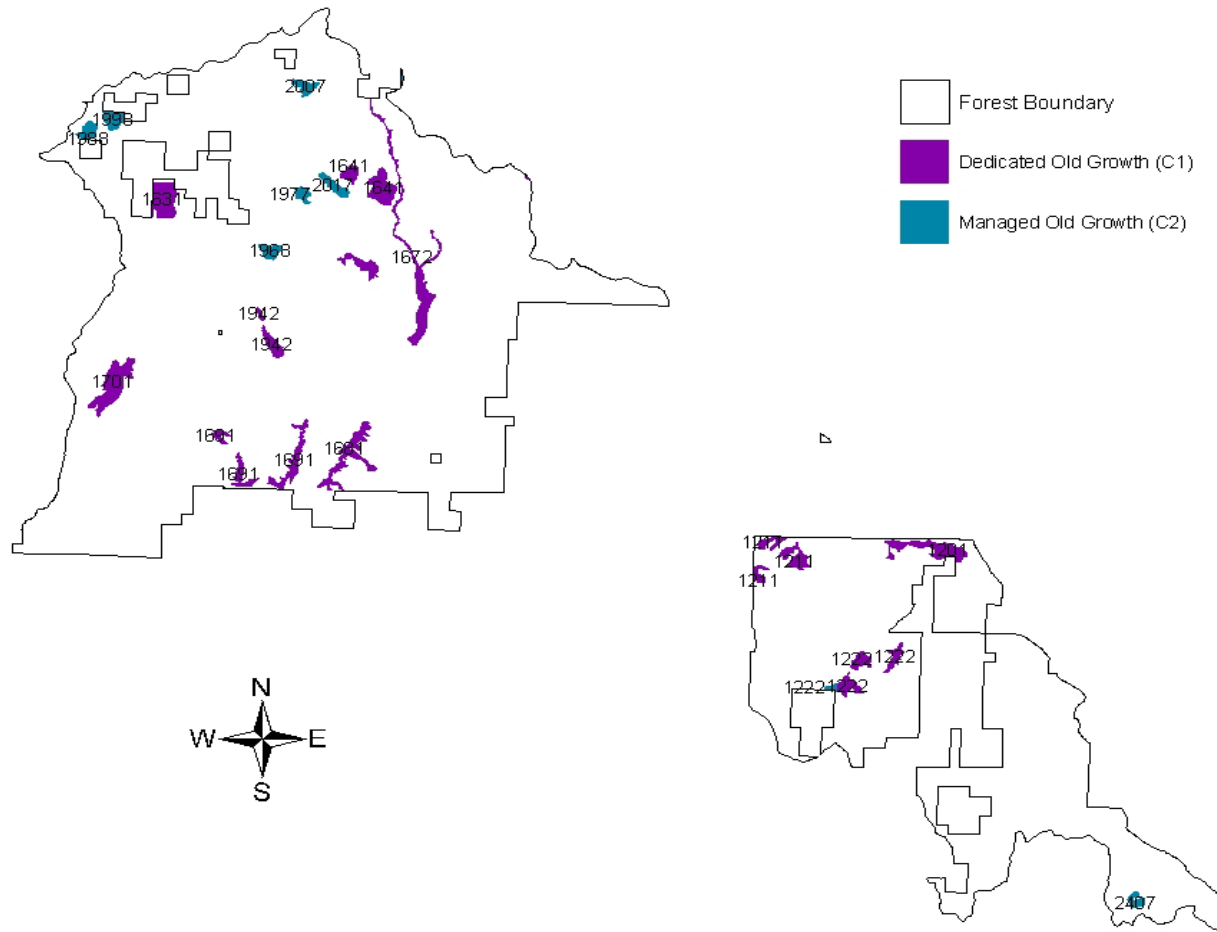
Map 8-2. Current (2004) habitats in the Potamus analysis area.



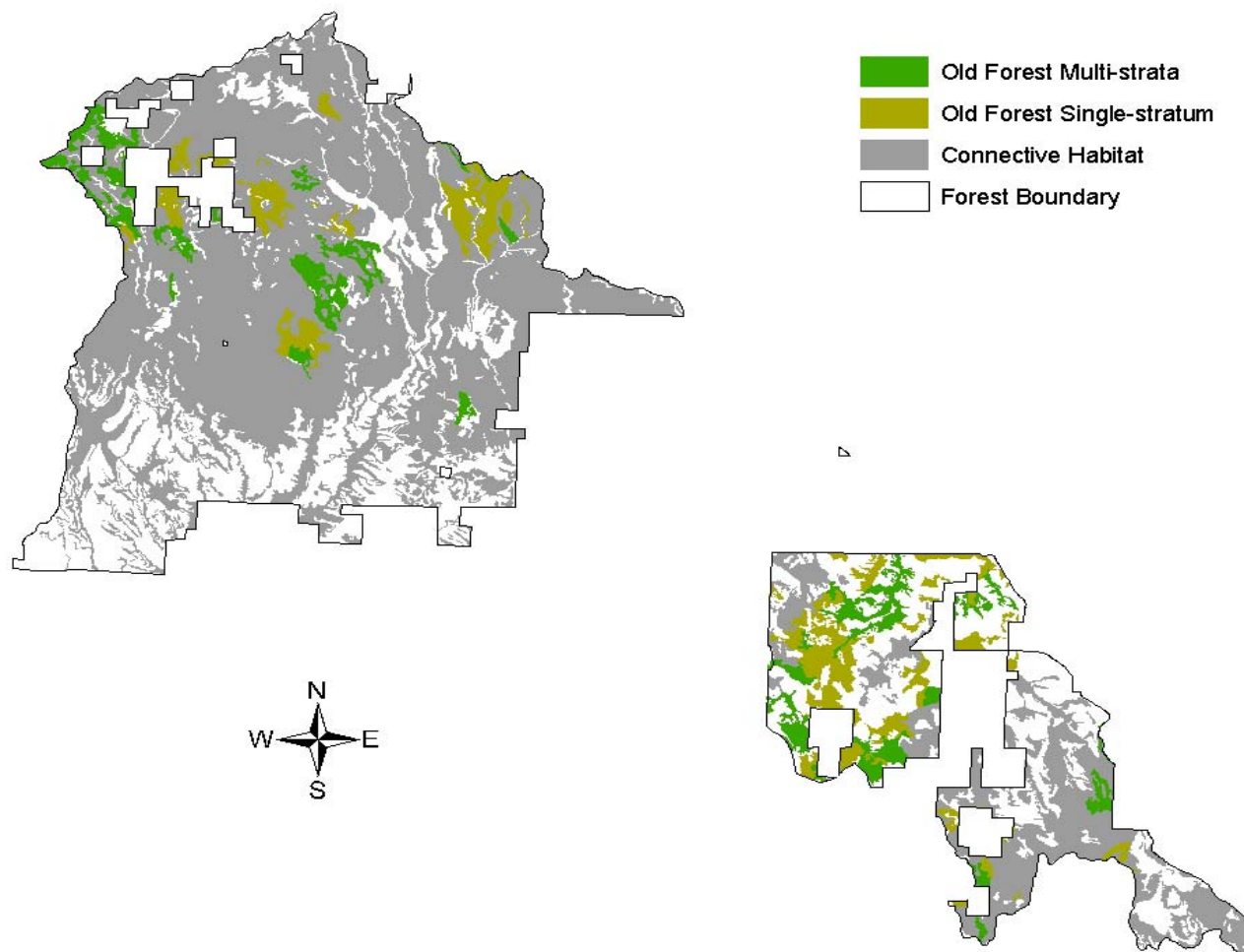
Map 8-3. Reference (1939) structural condition in the Potamus analysis area.



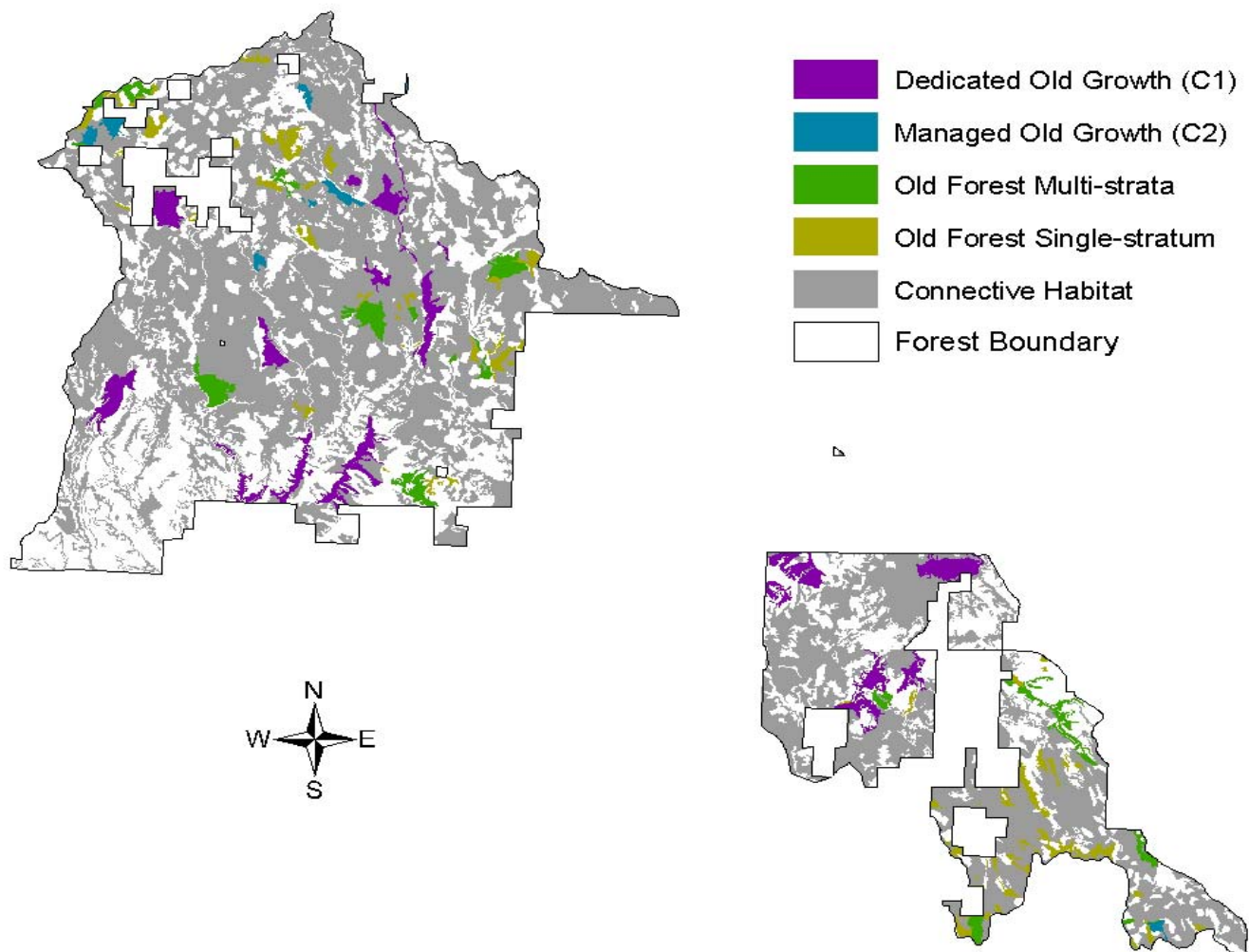
Map 8-4. Current (2004) structural condition in the Potamus analysis area.



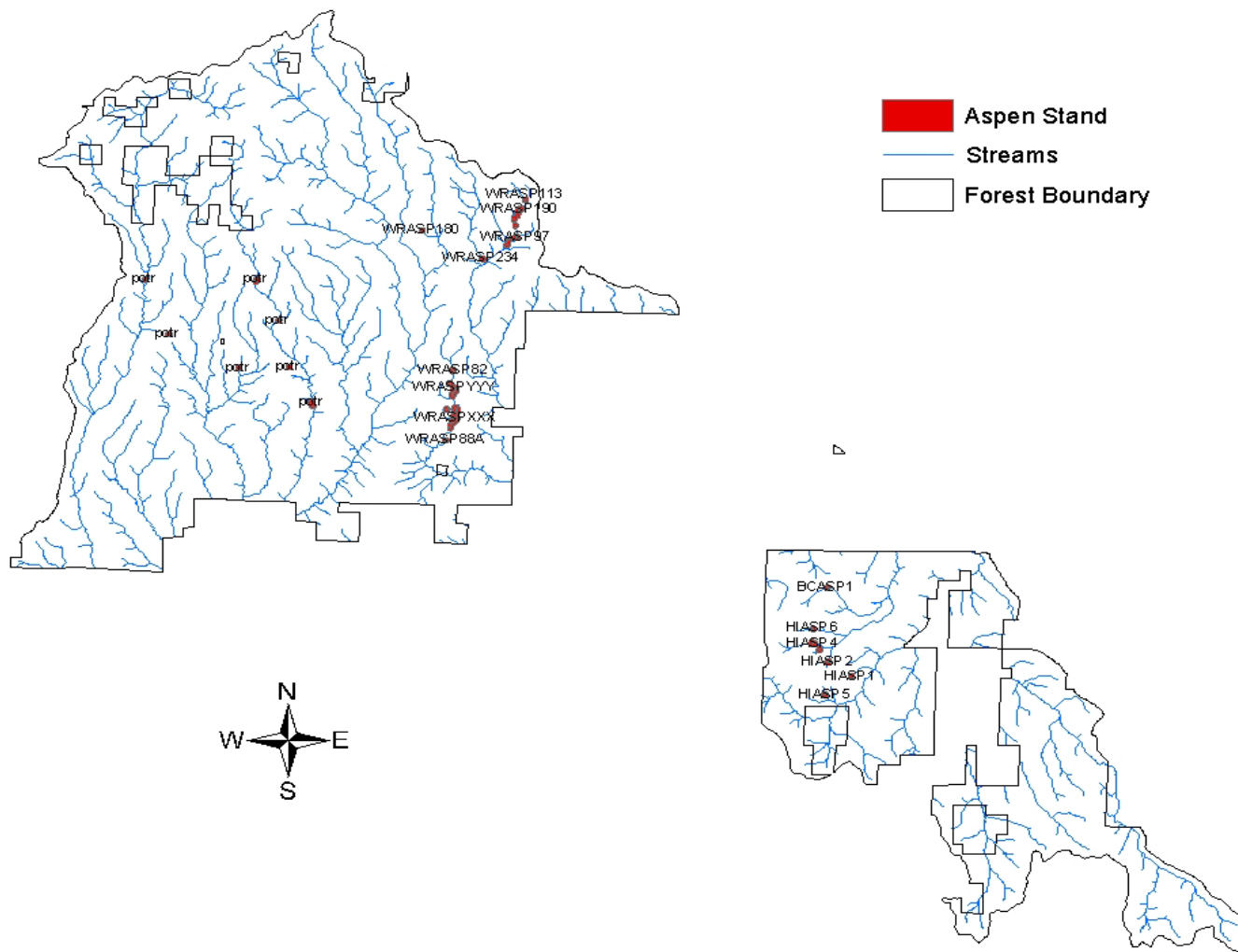
Map 8-5. Forest Plan dedicated (C1) and managed (C2) old growth areas in the analysis area.



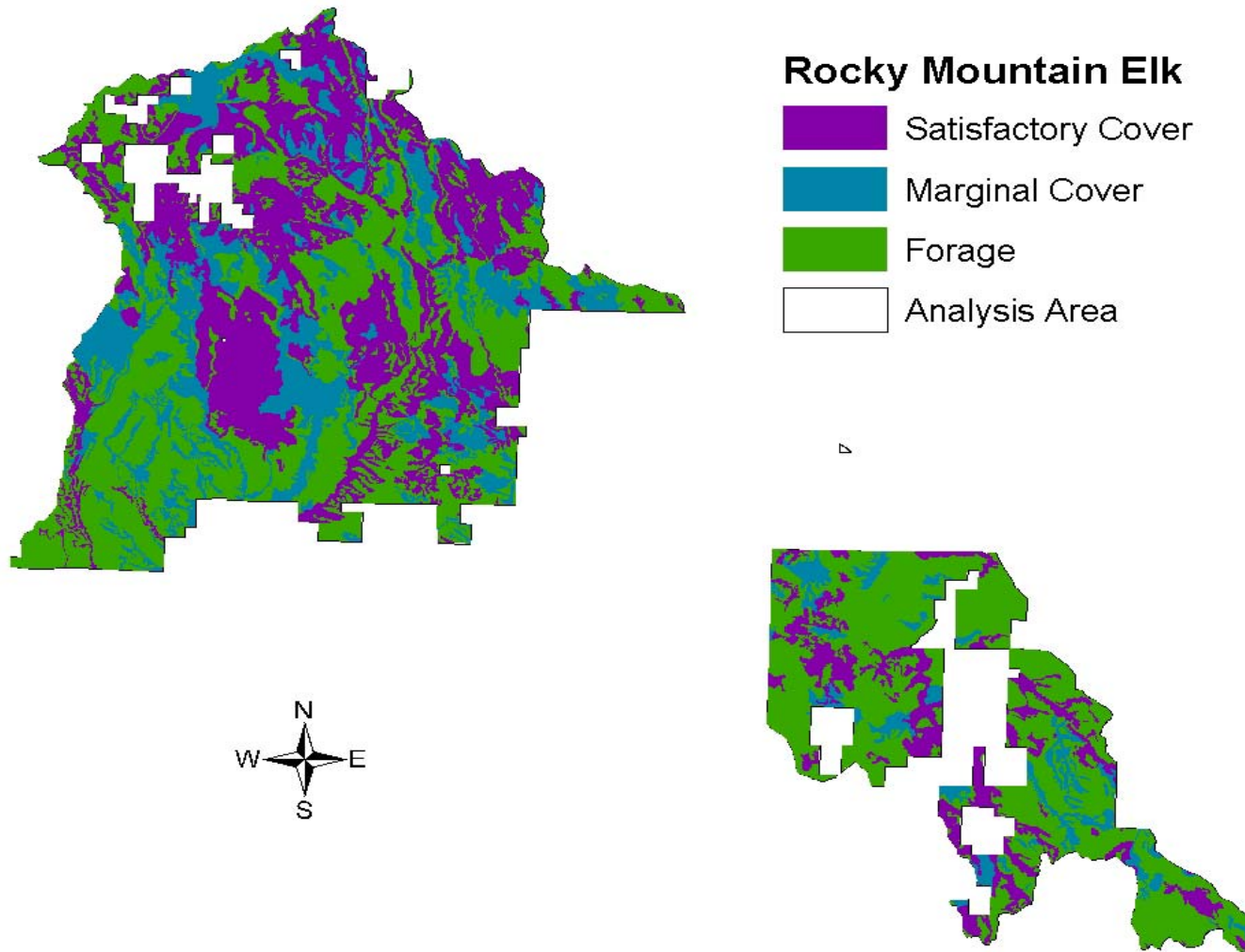
Map 8-6. Reference (1939) old forest habitats with connectivity in the Potomus analysis area.

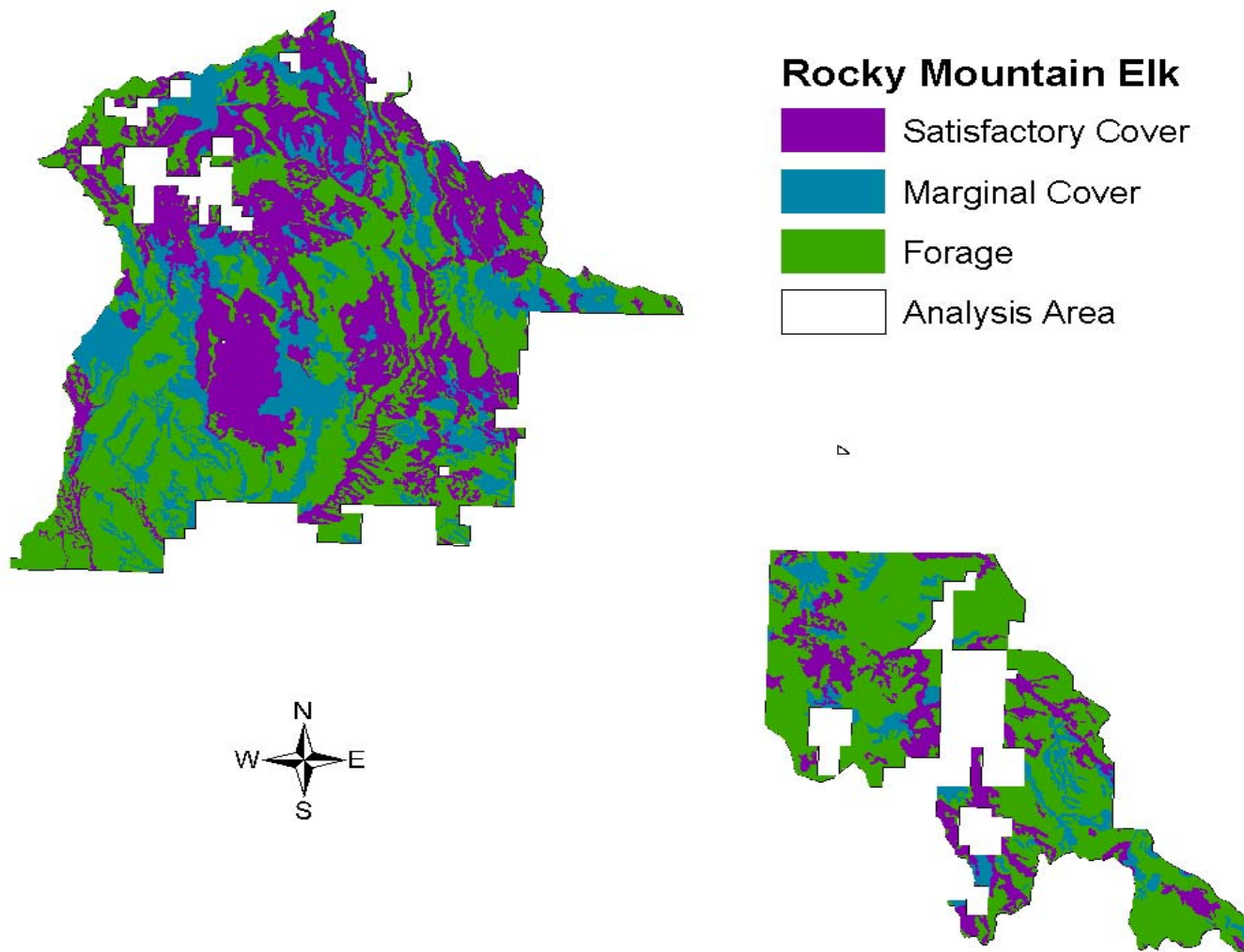


Map 8-7. Current (2004) old forest habitats with connectivity in the Potamus analysis area.

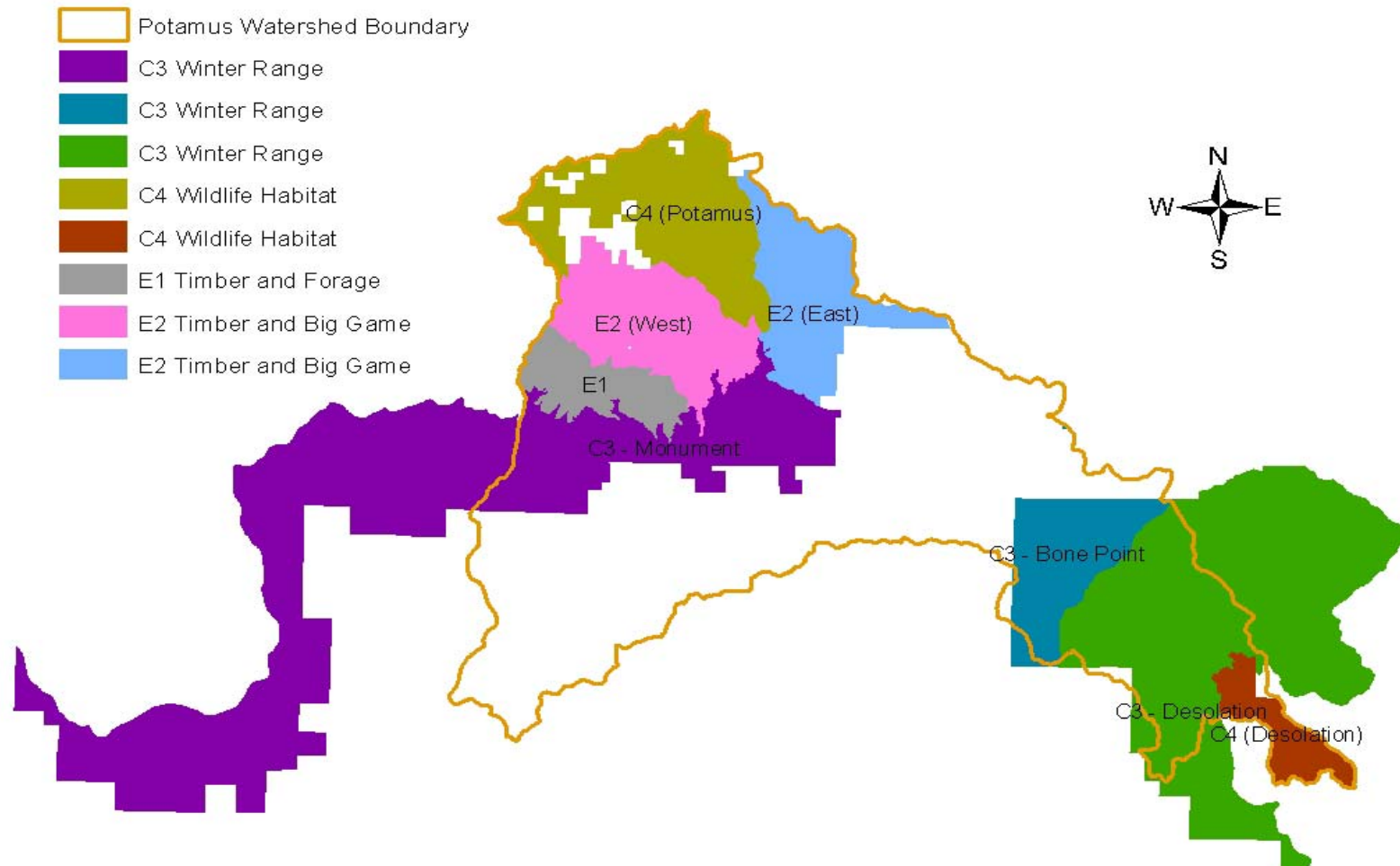


Map 8-8. Aspen stands in the Potamus analysis area.

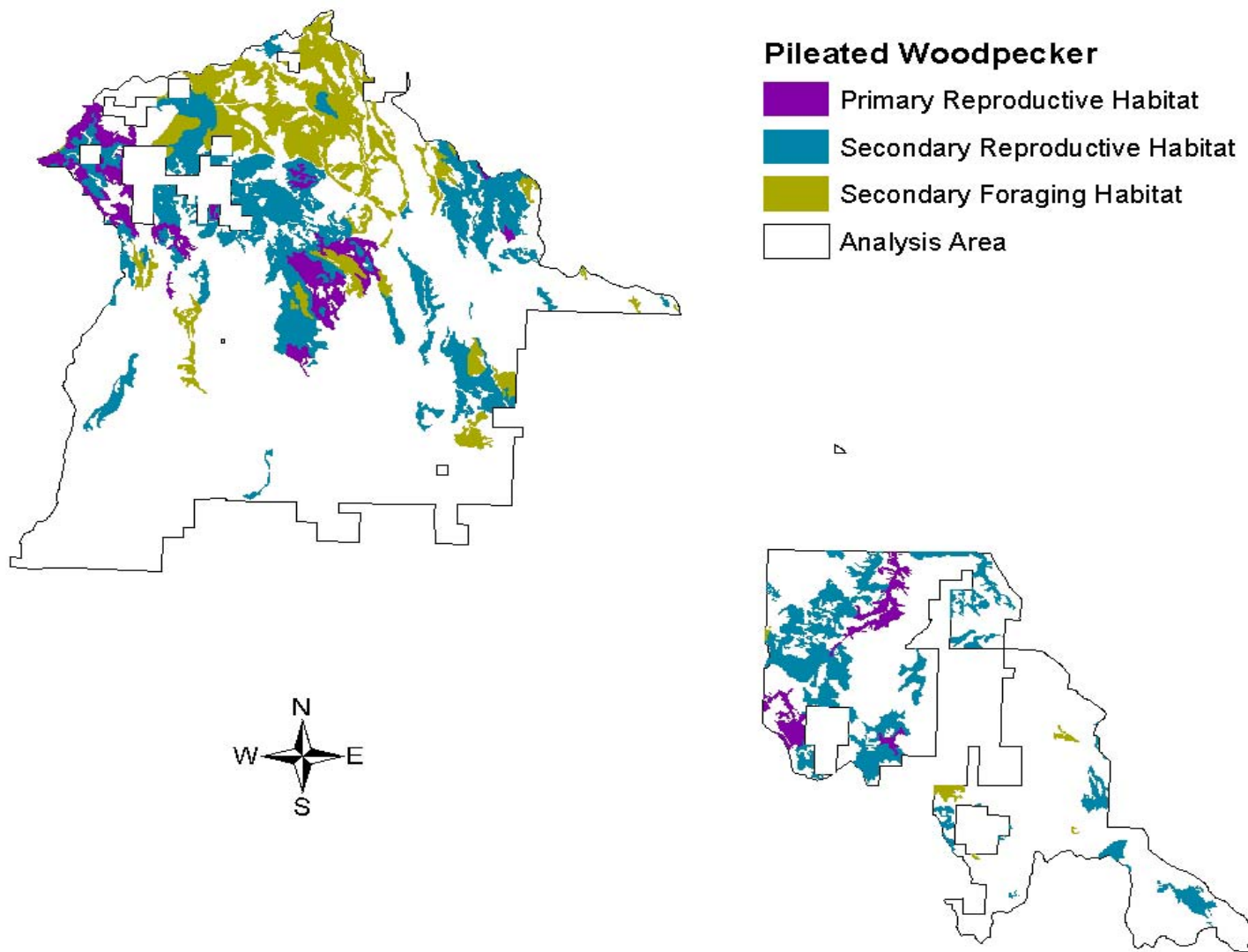




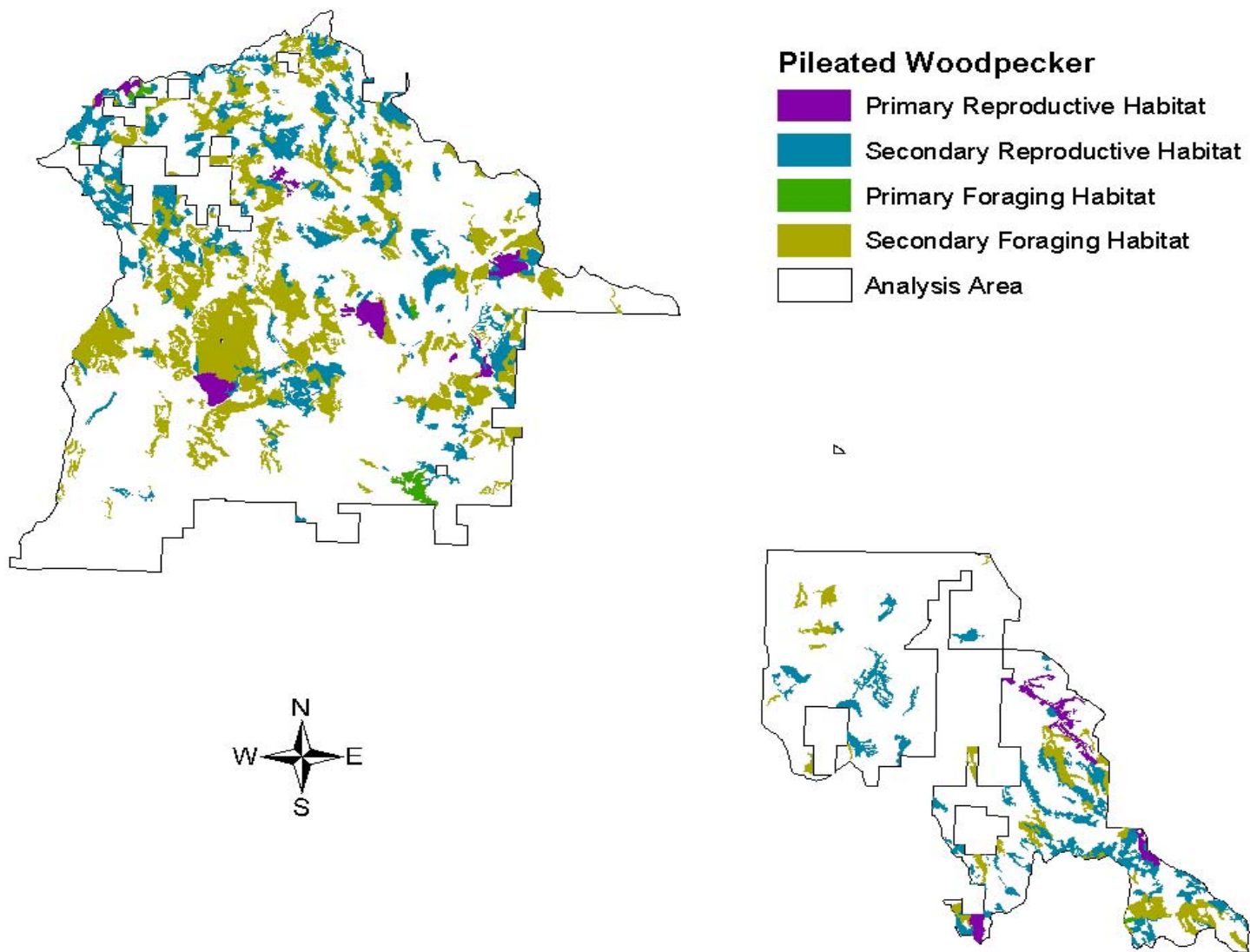
Map 8-10. Current (2004) Rocky Mountain Elk habitat availability in the Potamus analysis area.



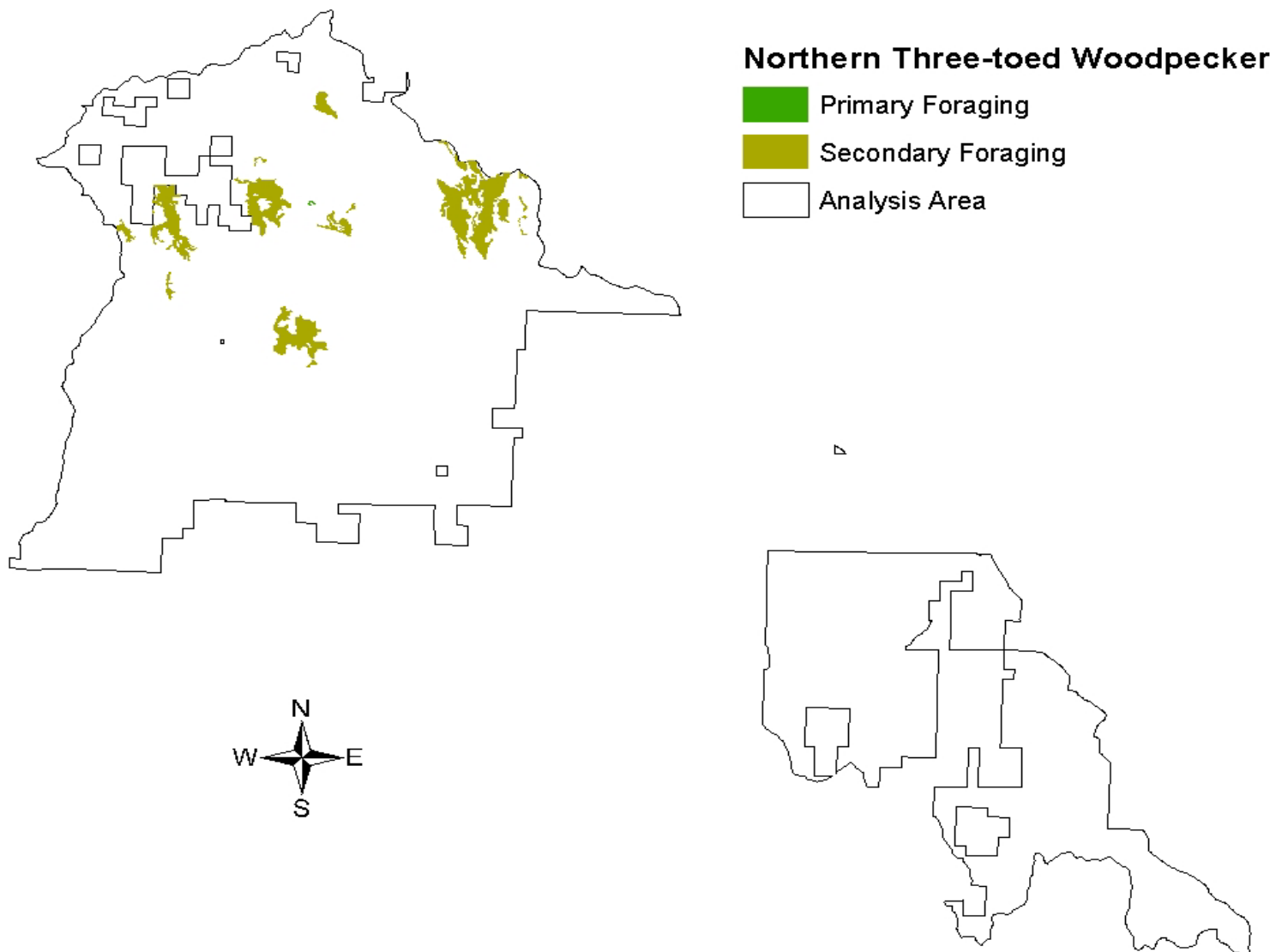
Map 8-11. Elk habitat effectiveness (HEI) analysis areas in the Potamus watershed.



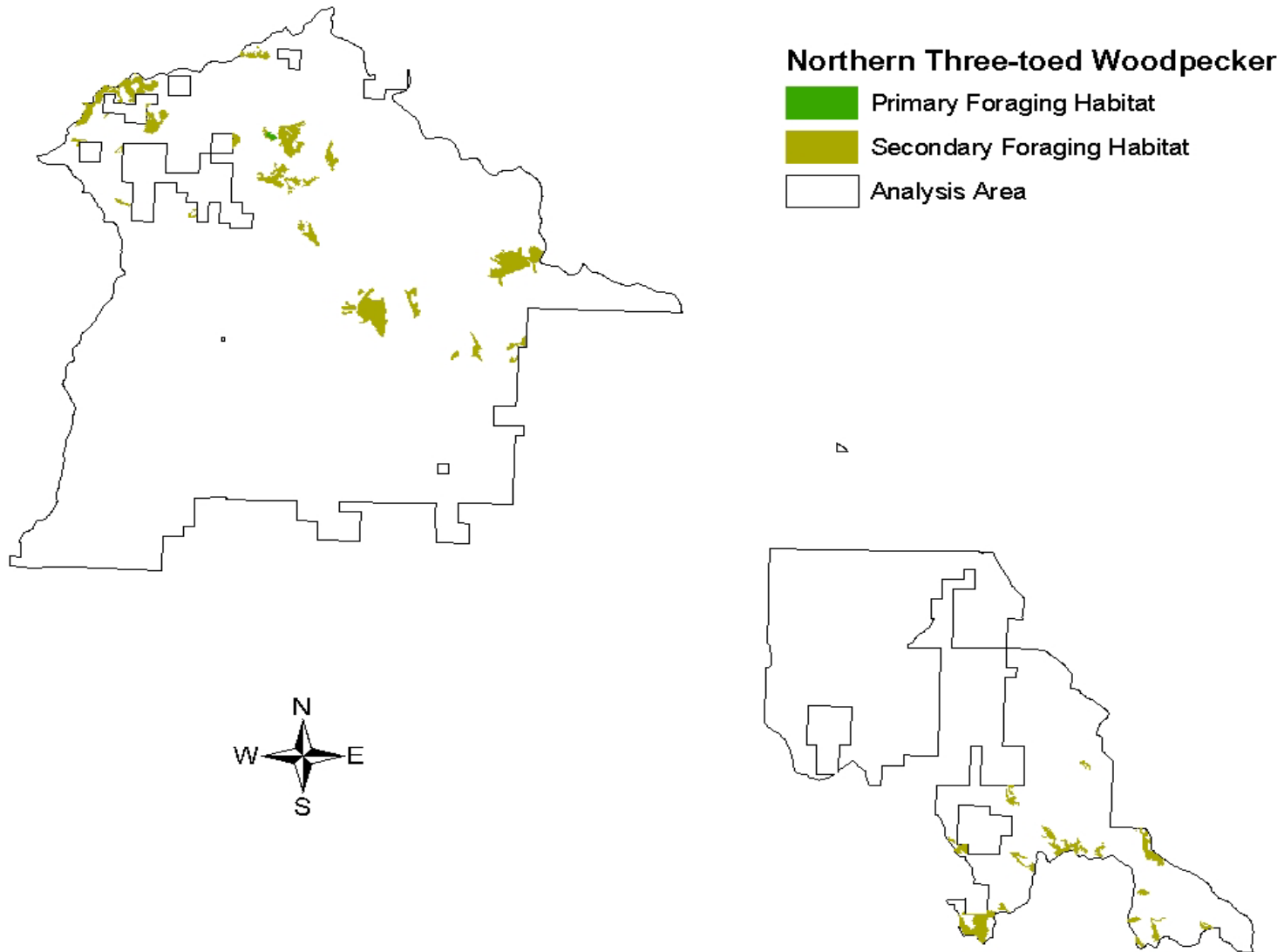
Map 8-12. Reference (1939) Pileated woodpecker habitat availability in the Potamus analysis area.



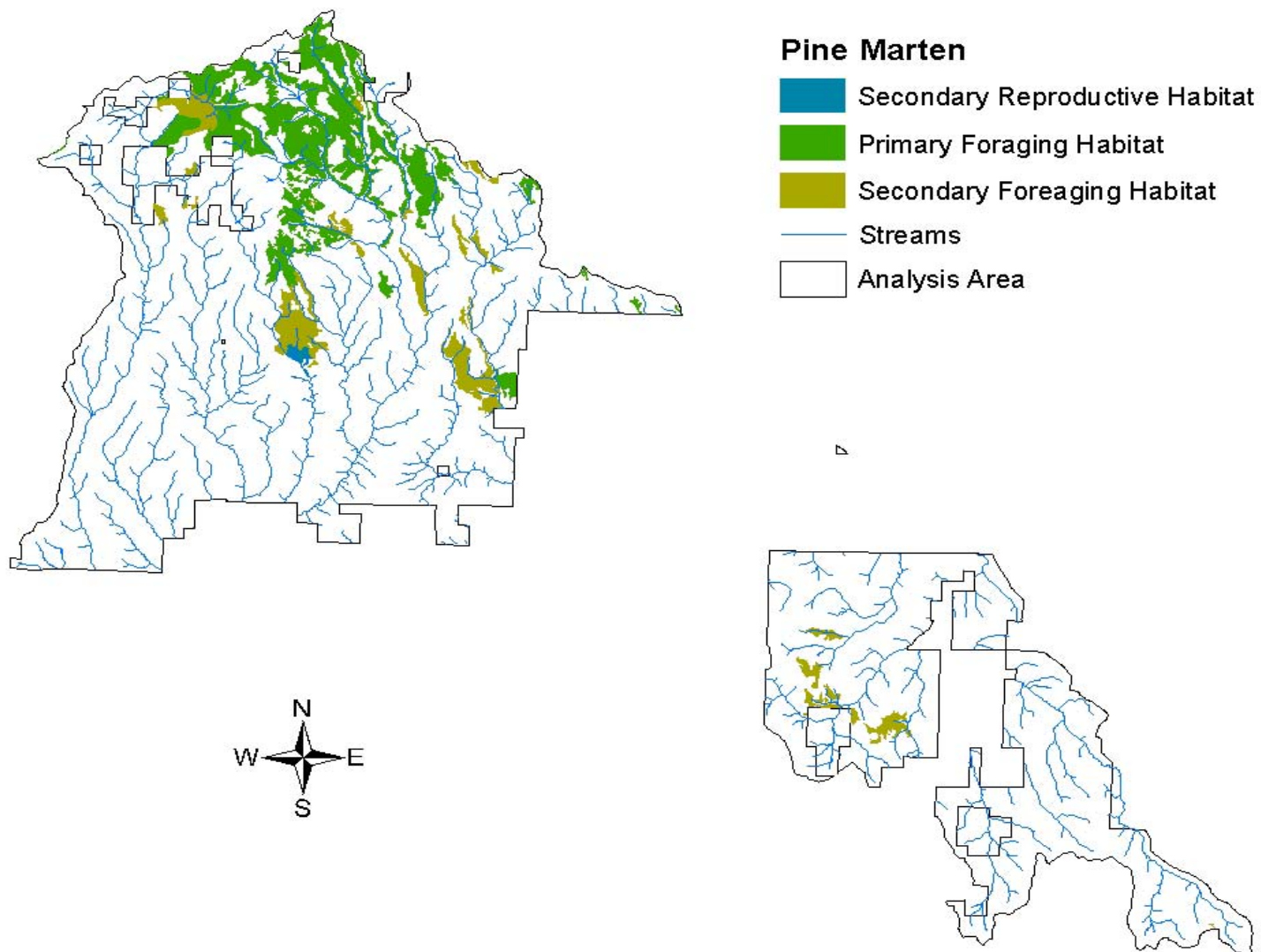
Map 8-13. Current (2004) Pileated woodpecker habitat availability in the Potomus analysis area.



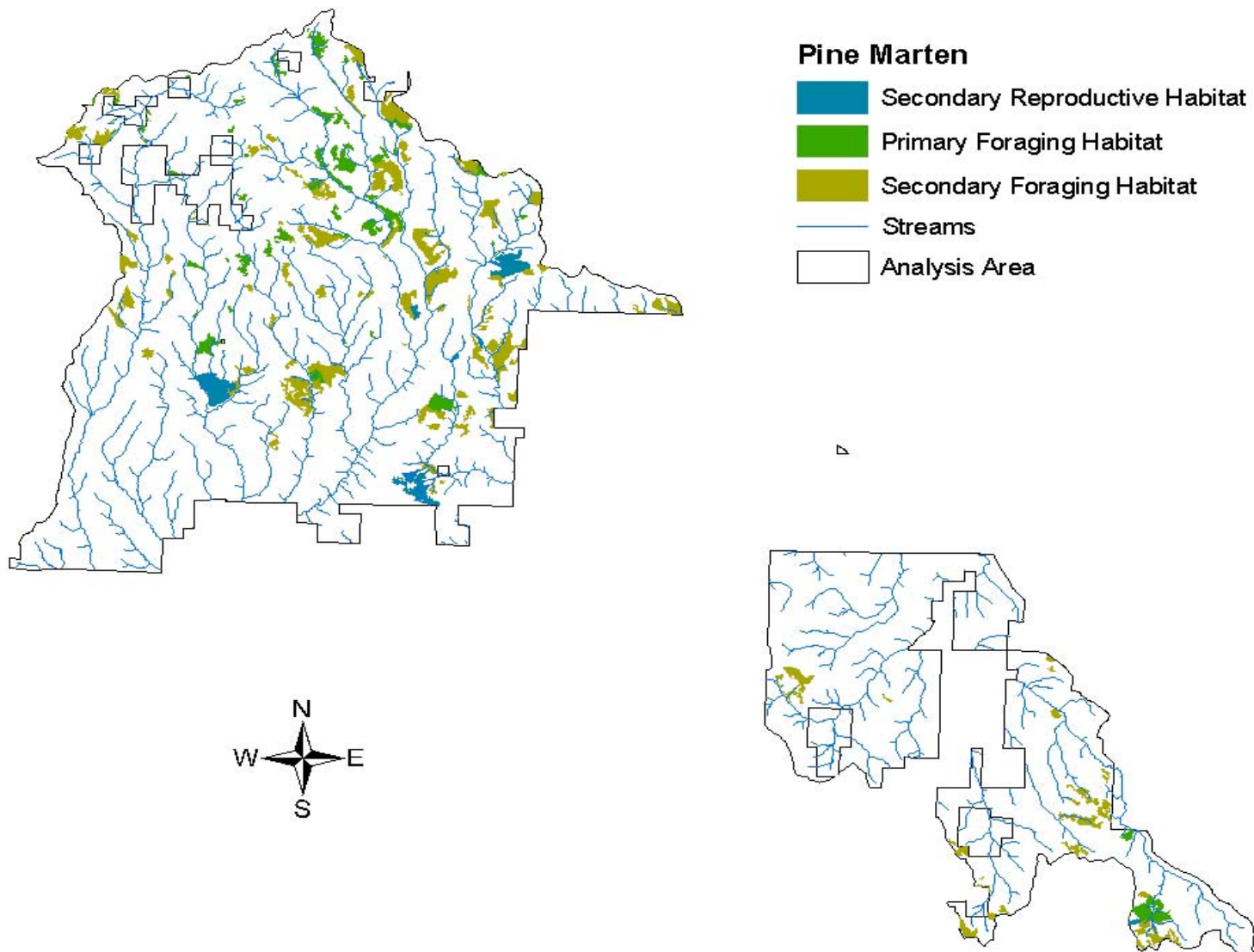
Map 8-14. Reference (1939) Northern three-toed woodpecker habitat availability in the Potamus analysis area.



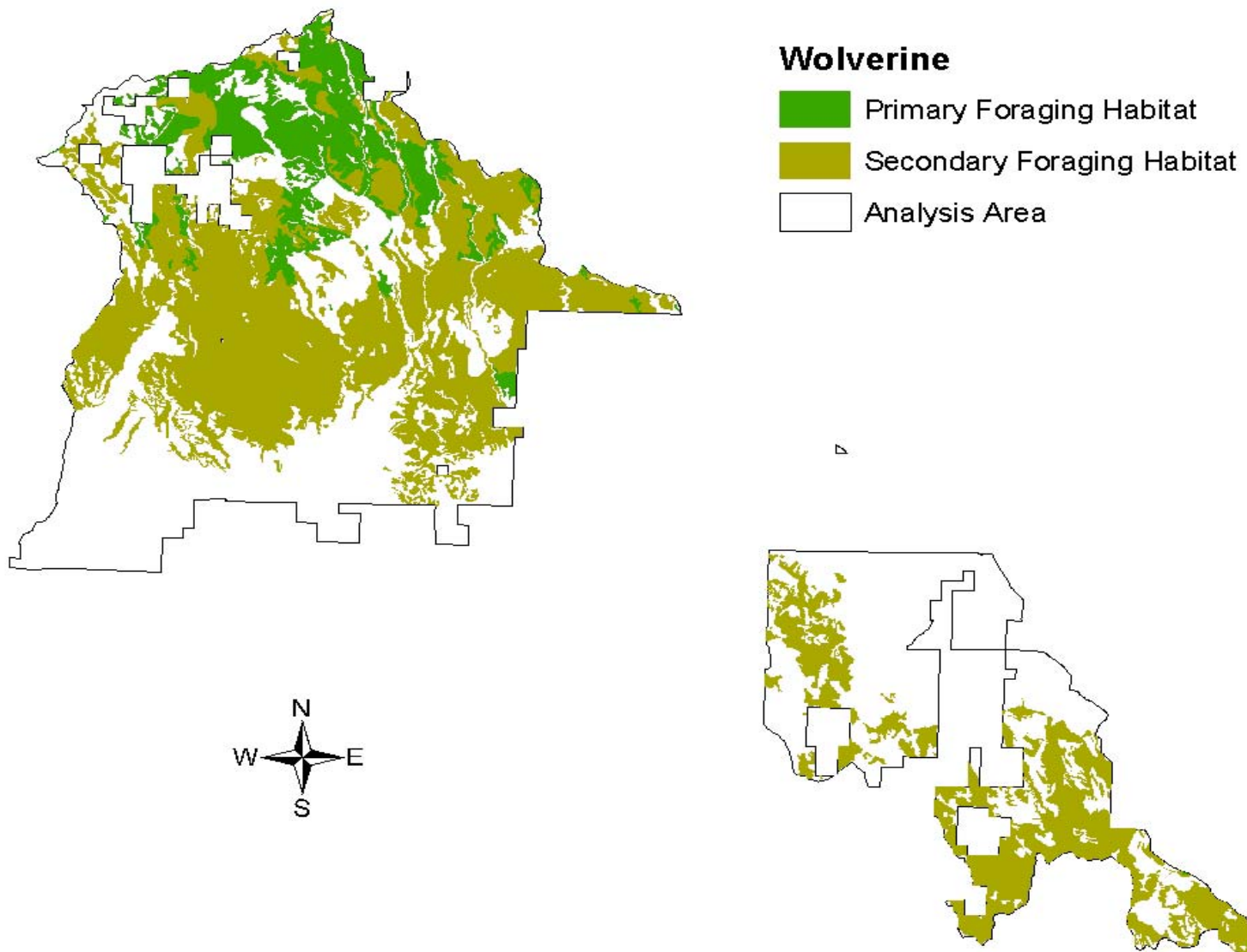
Map 8-15. Current (2004) Northern three-toed woodpecker habitat availability in the Potamus analysis area.



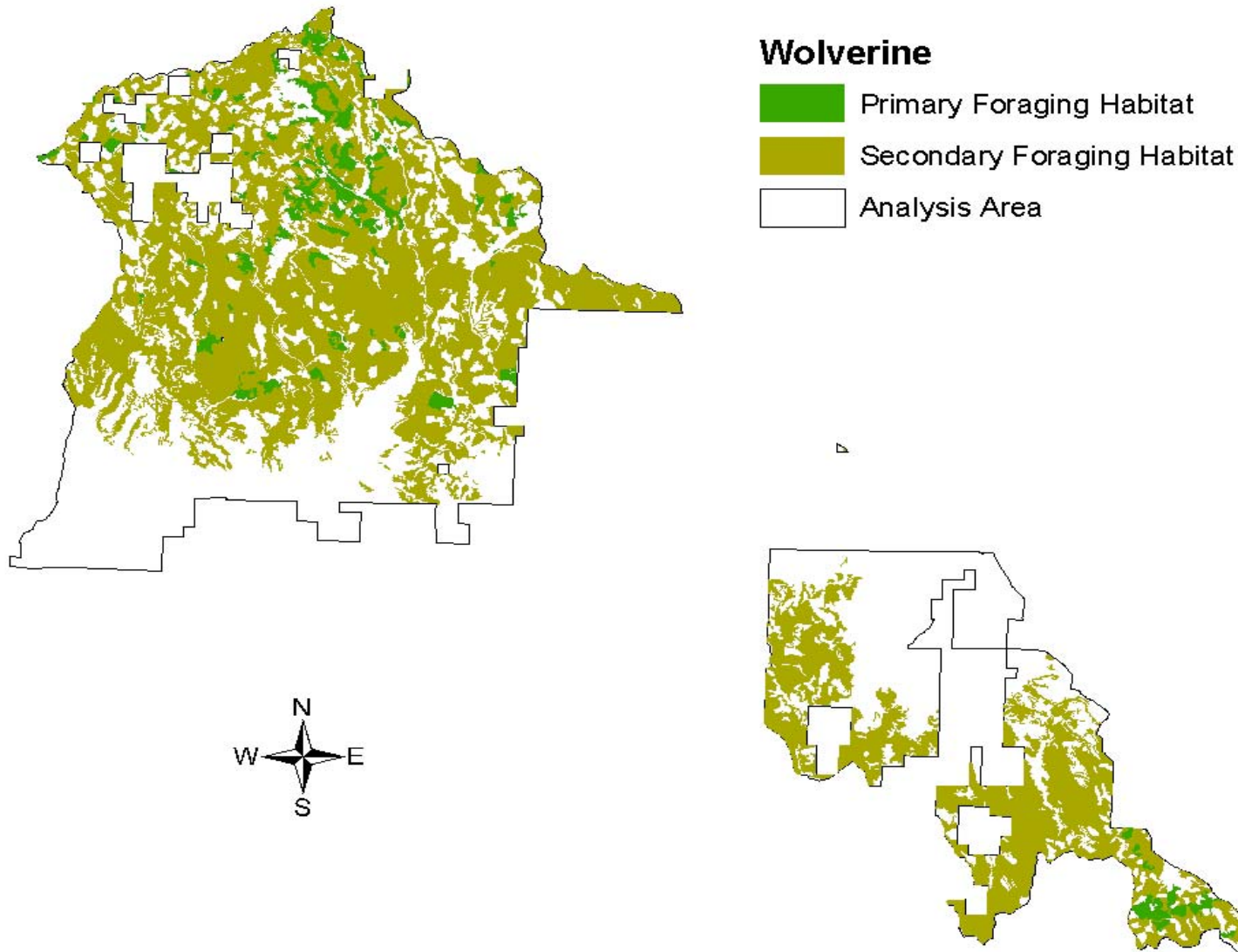
Map 8-16. Reference (1939) Pine marten habitat availability in the Potamus analysis area.



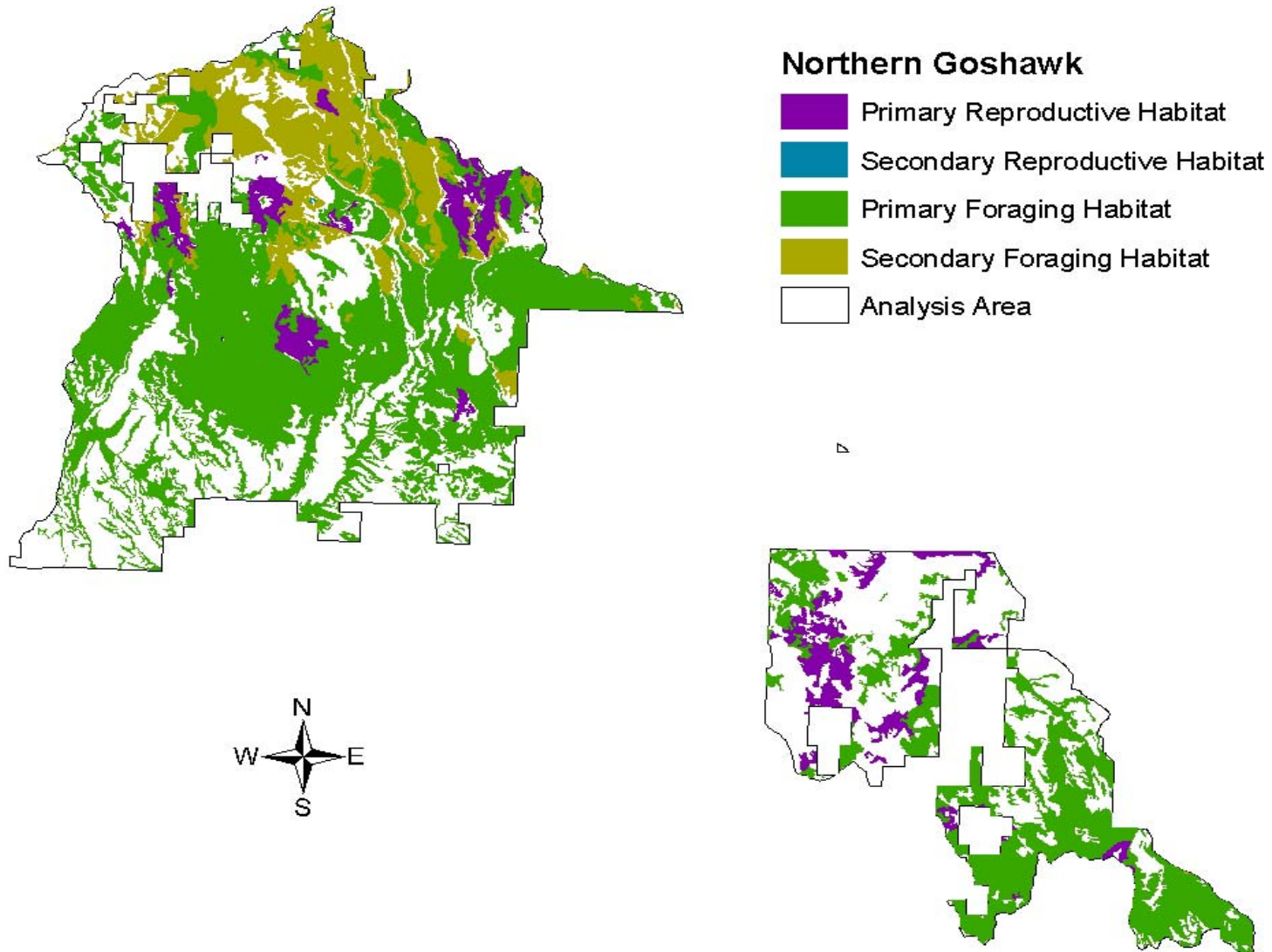
Map 8-17. Current (2004) Pine marten habitat availability in the Potamus analysis area.



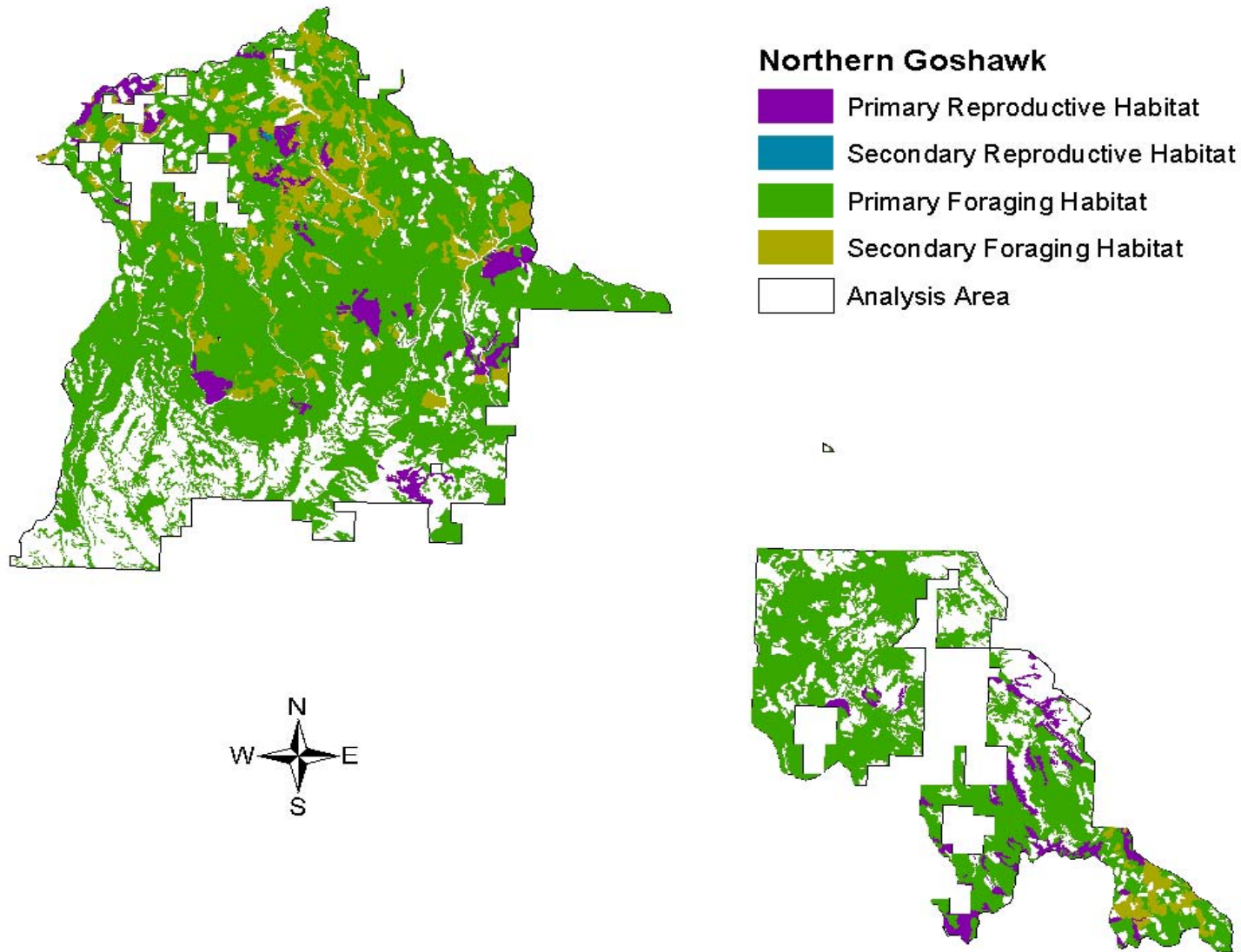
Map 8-18. Reference (1939) Wolverine foraging habitat availability in the Potamus analysis area.



Map 8-19. Current (2004) Wolverine foraging habitat availability in the Potamus analysis area.



Map 8-20. Reference (1939) Northern goshawk habitat availability in the Potomus analysis area.



Map 8-21. Current (2004) Northern goshawk habitat availability in the Potamus analysis area.