

Soil Burn Severity



High soil burn severity:
All or nearly all of the pre-fire ground cover and surface organic matter (litter, duff, and fine roots) is generally consumed, and charring may be visible on larger roots. Soil is often gray, orange, or reddish at the ground surface where large fuels were concentrated and consumed.



Moderate soil burn severity:
Up to 80 percent of the pre-fire ground cover (litter and ground fuels) may be consumed but generally not all of it. There may be potential for recruitment of effective ground cover from scorched needles or leaves remaining in the canopy that will soon fall to the ground. Soil structure is generally unchanged.



Low soil burn severity:
The ground surface, including any exposed mineral soil, may appear (lightly charred), and the canopy and understory vegetation will likely appear "green."



Very Low or Unburned:
Little to no burn expected within these areas. Canopy and ground litter completely intact. Little to no vegetative mortality expected.

For additional information including photo examples of soil burn severity see the Field Guide for Mapping Post-Fire Soil Burn Severity at http://www.fs.fed.us/rm/pubs/rmrs_qtr243.pdf

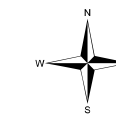


Burned Area Emergency Response

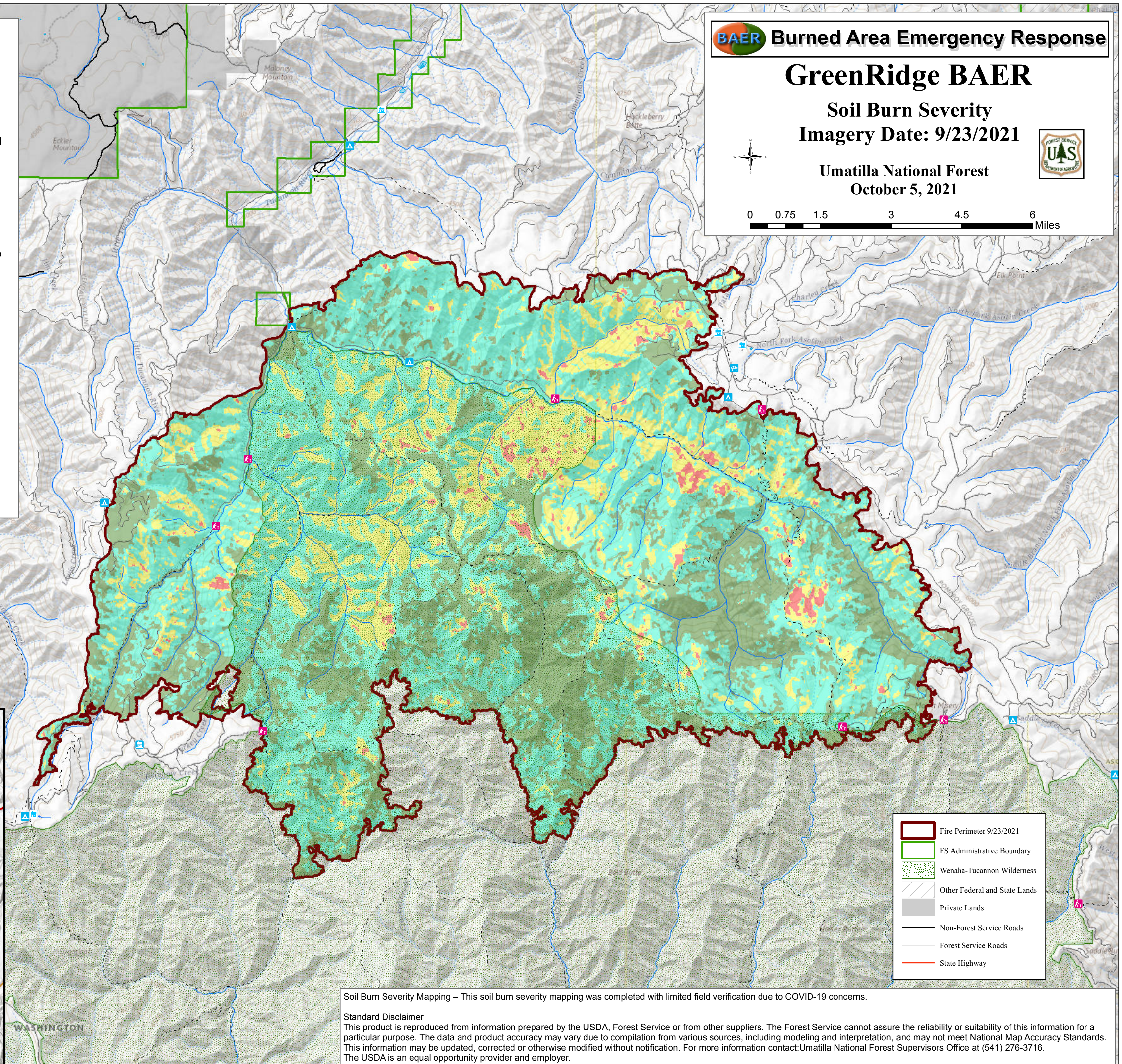
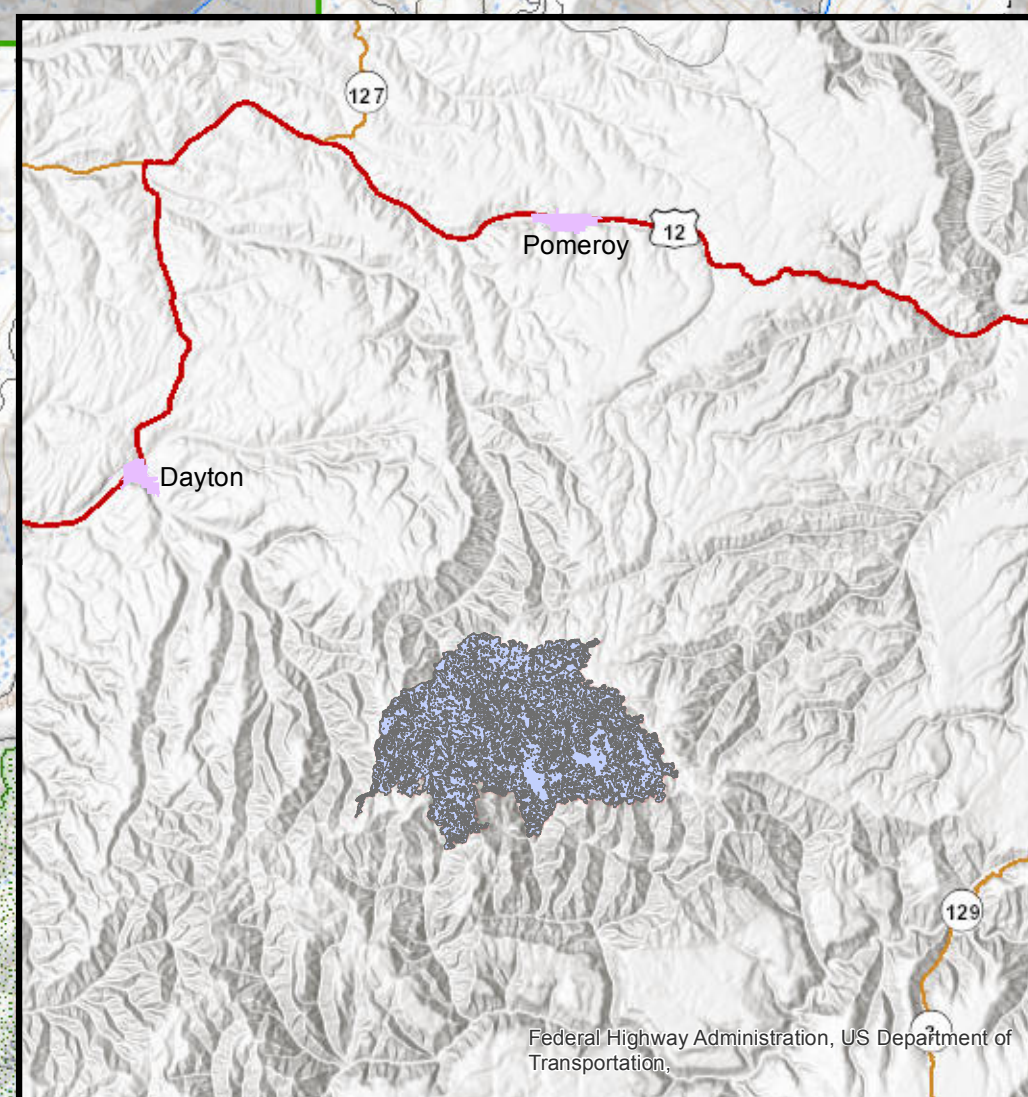
GreenRidge BAER

Soil Burn Severity
Imagery Date: 9/23/2021

Umatilla National Forest
October 5, 2021



0 0.75 1.5 3 4.5 6 Miles



- Fire Perimeter 9/23/2021
- FS Administrative Boundary
- Wenaha-Tucannon Wilderness
- Other Federal and State Lands
- Private Lands
- Non-Forest Service Roads
- Forest Service Roads
- State Highway

Soil Burn Severity Mapping – This soil burn severity mapping was completed with limited field verification due to COVID-19 concerns.

Standard Disclaimer

This product is reproduced from information prepared by the USDA, Forest Service or from other suppliers. The Forest Service cannot assure the reliability or suitability of this information for a particular purpose. The data and product accuracy may vary due to compilation from various sources, including modeling and interpretation, and may not meet National Map Accuracy Standards. This information may be updated, corrected or otherwise modified without notification. For more information contact: Umatilla National Forest Supervisors Office at (541) 276-3716. The USDA is an equal opportunity provider and employer.

Airbus, USGS, NGA, NASA, CIGIAR, NCEAS, NLS, OS, NIMA, Geodatastyrelsen, GSA, GST and the GIS User Community