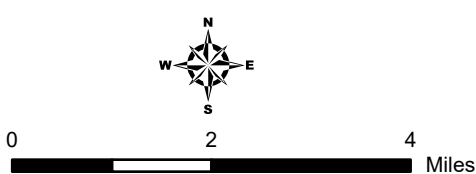
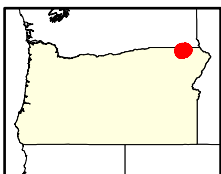
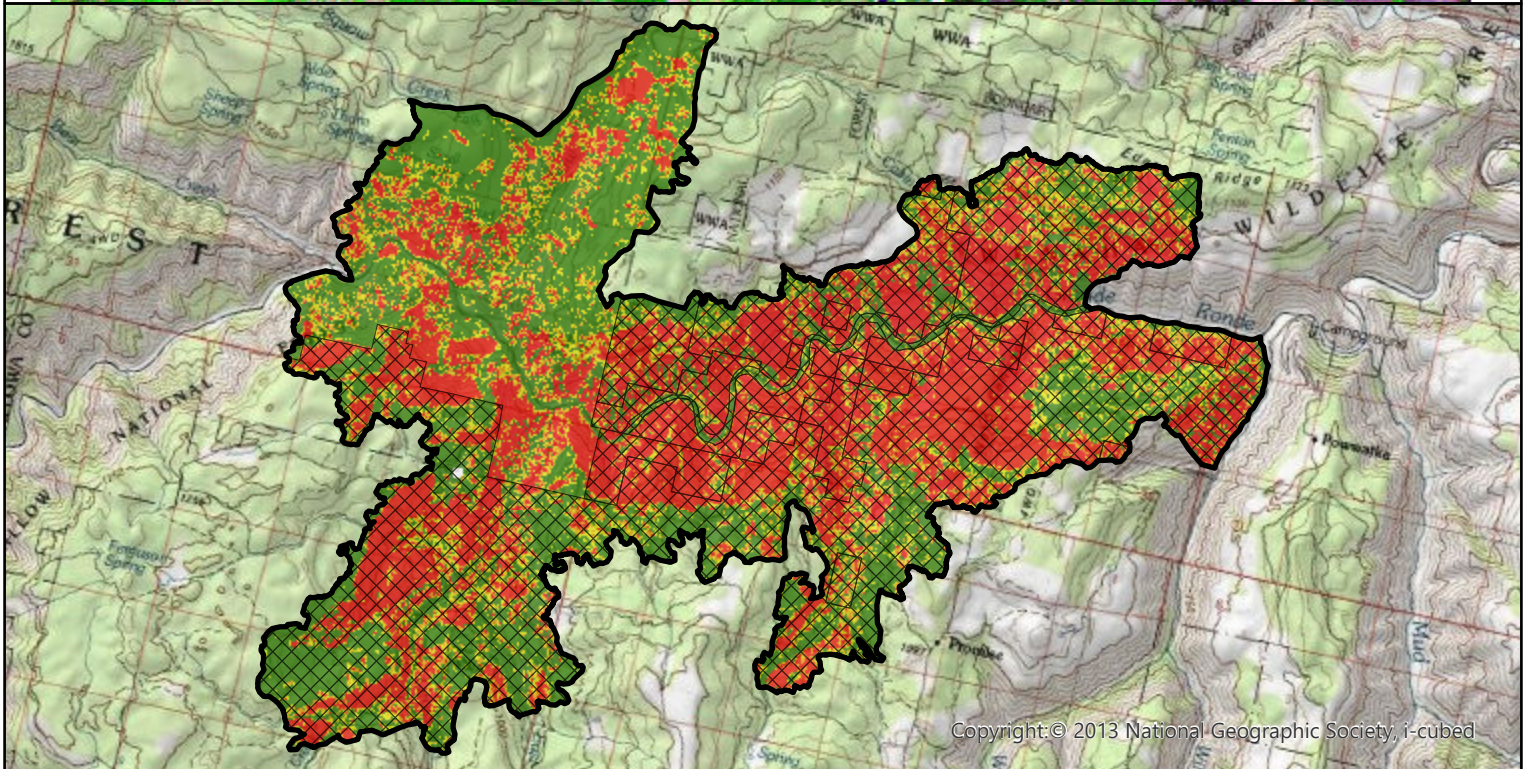


2021 ELBOW CREEK Fire (OR4586811763020210715)

Post-fire imagery (top, 2021-08-29, Sentinel-2) and modeled RAVG data (bottom)



- Burn Area Boundary
- FS Wilderness
- Non-FS Land

Basal Area Loss

- 0% - < 25%
- 25% - < 50%
- 50% - < 75%
- 75% - 100%
- Unmappable



Rapid Assessment of Vegetation Condition after Wildfire (RAVG). Map produced by the USDA Forest Service Geospatial Technology and Applications Center (GTAC). For more information visit <https://fsapps.nwcg.gov/ravg/> or send email to SM.FS.PostFireRAVG@usda.gov.