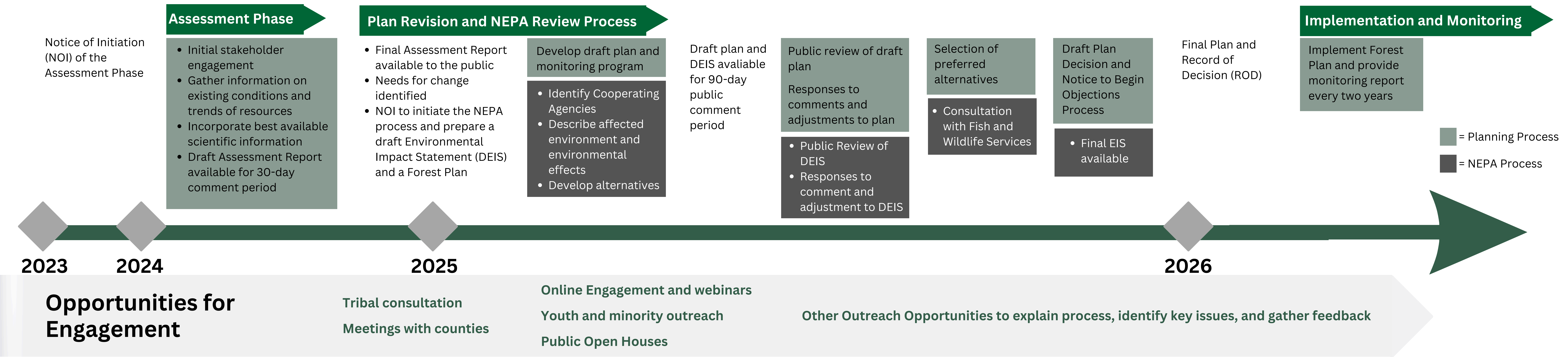


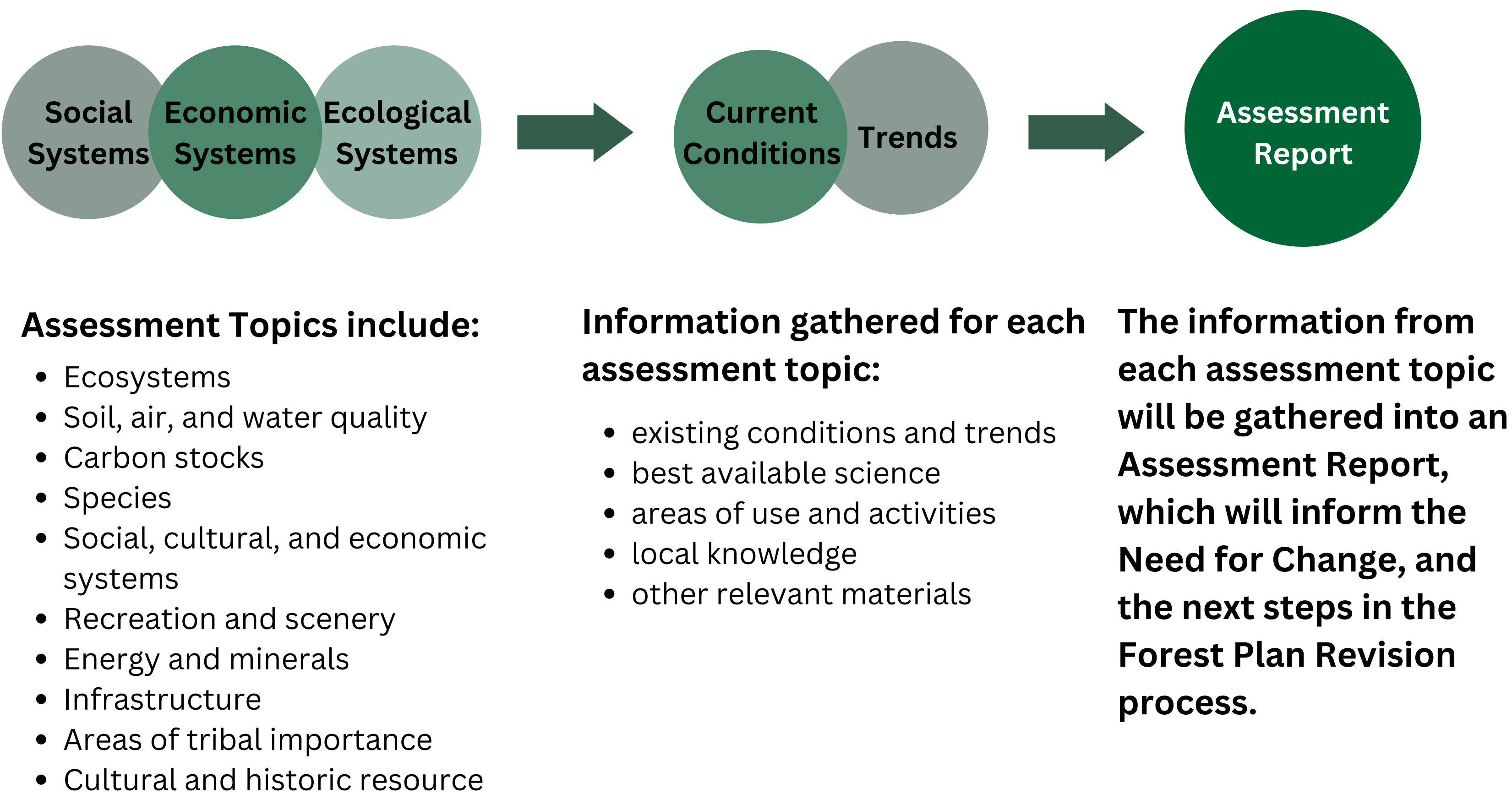
Blue Mountains Forest Plan Revision - *The plan, the process, and how to participate*

Forest Plan Revision Roadmap



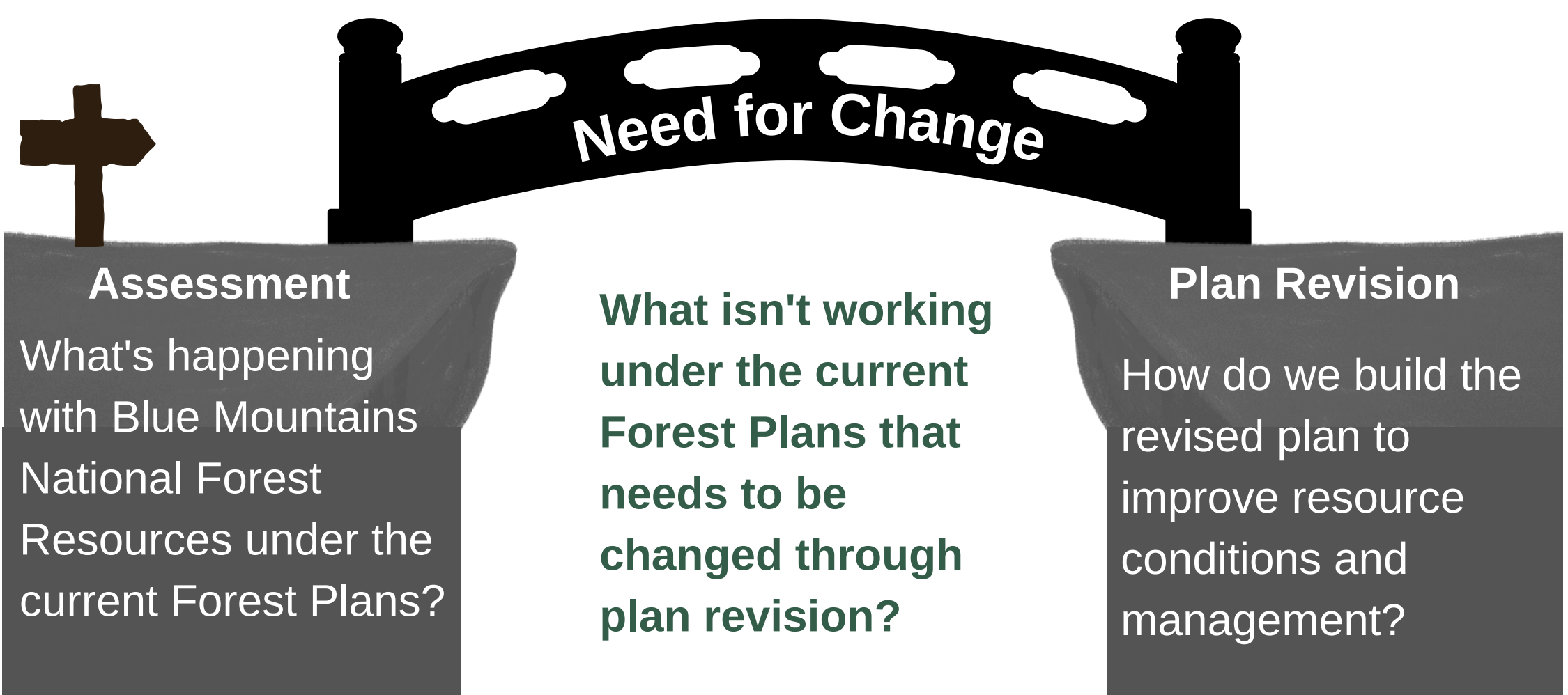
Where are we now?

The Blue Mountains National Forests are currently in the **Assessment Phase**, in which the Forest Service and partners identify and evaluate existing economic, social and ecological conditions in and around the Blue Mountains National Forests.



What are the next steps?

Identify the Need for Change - connecting the findings of the Assessment Report to Plan Revision.



What is a Forest Plan?

Similar to a comprehensive city plan, the Forest Plan guides **what** we do, **where** we do it, and **how** we do it for 15+ years, while specific activities are authorized by project-level decisions.

Why are we revising the Forest Plan?

It's the law - The National Forest Management Act (NFMA) requires every National Forest to develop a Forest Plan and revise that plan at least every 15 years. The Malheur, Umatilla, and Wallowa-Whitman National Forests are operating under plans there were signed in the 1990s and need to be revised to be compliant with NFMA and provide updated frameworks to guide forest management that considers current science and local, economic, social and environmental conditions.

A lot has changed - Since the current Forest Plans were implemented more than 30 years ago, there have been:

- new laws, regulations and policies
- changes in population and public values
- bigger and more devastating fires
- new invasives and outbreaks that the previous plans did not anticipate, such as the mountain pine beetles epidemic
- changes and increases in activities and uses
- advances in science and information that need to be incorporated into the revised Forest Plan

How can you help?

Be an active stakeholder in developing a future vision for the Blue Mountains National Forests. Your input will help develop plan direction that will provide for healthy, diverse, and productive forests in addition to the many benefits and uses desired by local communities and visitors.

Provide input on subjects such as:

- what you and your community value
- available information
- areas you use and how you use them
- goods and services produced
- other relevant material and priority issues that will inform the need to change the current plan

Stay in touch! Sign up for our mailing list to receive updates on the Blue Mountains Forest Plan Revision process.

Join the mailing list by emailing: sm.fs.bluesforests@usda.gov or by following the QR code below.

