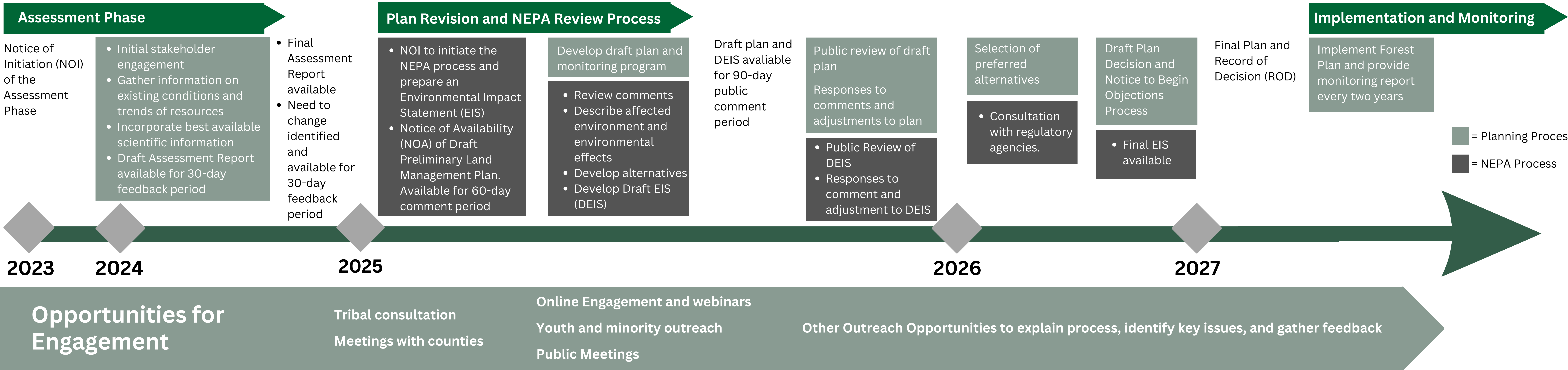


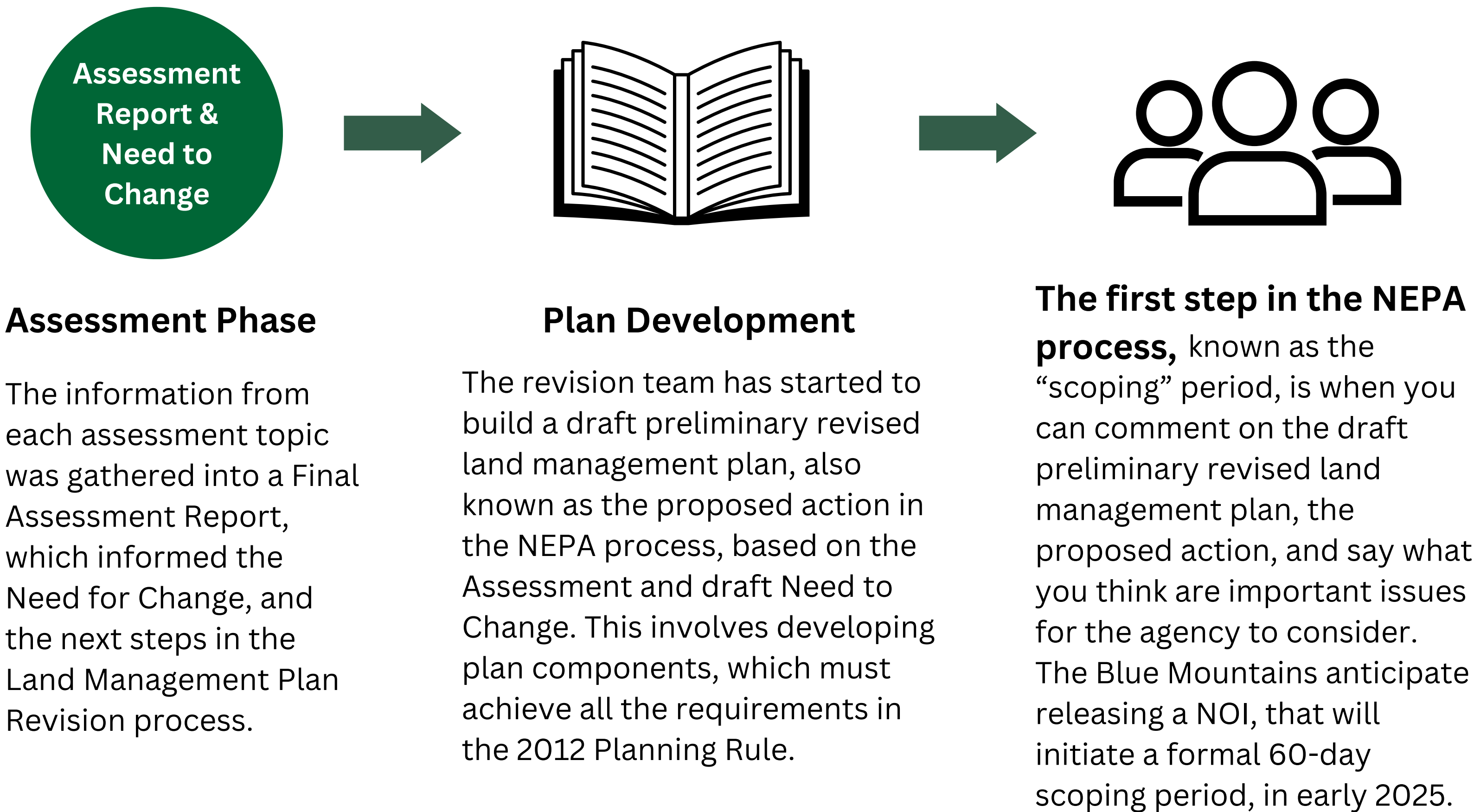
Blue Mountains Land Management Plan Revision - *The plan, the process, and how to participate*

Land Management Plan Revision Roadmap



Where are we now?

The Blue Mountains National Forests are currently transitioning into the **NEPA process and plan development**, in which the Forest Service and public will begin to build a revised land management plan based on the Assessment and the Need to Change the 1990 plans for the Blue Mountains National Forests.



What are the next steps?

Identify significant issues based on public scoping comments and develop alternatives.

After the scoping period, the Forest Service will develop a proposed plan, analyze the environmental effects of the proposed plan, as well as alternatives, in a detailed document called a draft environmental impact statement (EIS). The Forest Service will make the proposed plan and the draft EIS available for public review and comment. You will have at least 90-days to comment on the proposed plan and draft EIS for a plan revision. ***Commenting during the scoping and/or DEIS period may establish an individual’s eligibility to object to the eventual draft decision.***

What is a Land Management Plan?

Similar to a comprehensive city plan, the Land Management Plan guides **what** we, the Forest Service, do, **where** we do it, and **how** we do it for 15+ years, while specific activities are authorized by project-level decisions.

Why are we revising the Land Management Plan?

It’s the law - The National Forest Management Act (NFMA) requires every National Forest to develop a Land Management Plan and revise that plan at least every 15 years. The Malheur, Umatilla, and Wallowa-Whitman National Forests are operating under plans there were signed in the 1990s and need to be revised to be compliant with NFMA and provide updated frameworks to guide forest management that considers current science and local, economic, social and environmental conditions.

A lot has changed - Since the current Plans were implemented more than 30 years ago, there have been:

- new laws, regulations and policies
- changes in population, public values, and community needs
- bigger and more devastating fires
- new invasives and outbreaks that the previous plans did not anticipate, such as the mountain pine beetles epidemic
- changes and increases in activities and uses
- advances in science and information that need to be incorporated into the revised Land Management Plan

How can you help?

Be an active stakeholder in developing a future vision for the Blue Mountains National Forests. Your input will help develop plan direction that will provide for healthy, diverse, and productive forests in addition to the many benefits and uses desired by local communities and visitors.

Provide input on subjects such as:

- what you and your community value
- available information
- areas you use and how you use them
- goods and services produced
- other relevant material and priority issues that will inform the need to change the current plan

Join the mailing list by emailing: sm.fs.bluesforests@usda.gov.

Interested in learning more about the land management process, follow the link: <https://tinyurl.com/35wtfbpj> or scan the QR code.

