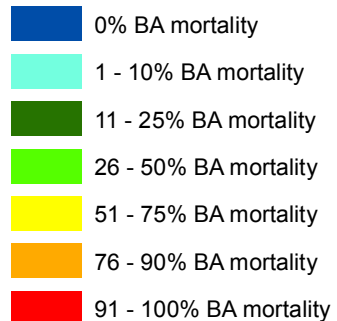


Vegetation Mortality Basal Area Loss



Post-fire vegetation mortality products are intended primarily for use in assessing fire-related reforestation needs. These data help staff on local units prioritize areas for further assessment and support reforestation funding requests and decisions. They facilitate post-fire vegetation management decision-making by reducing planning and implementation costs. These data also serve a variety of related Agency objectives, such as wildlife habitat analysis and salvage harvest planning. In contrast, the soil burn severity map helps the BAER program meet its first priority, which is to address emergency soil stabilization needs to prevent further damage to life, property, and natural and cultural resources.

See <https://fsapps.nwcg.gov/ravg/background-products-applications> for info on vegetation mortality data.

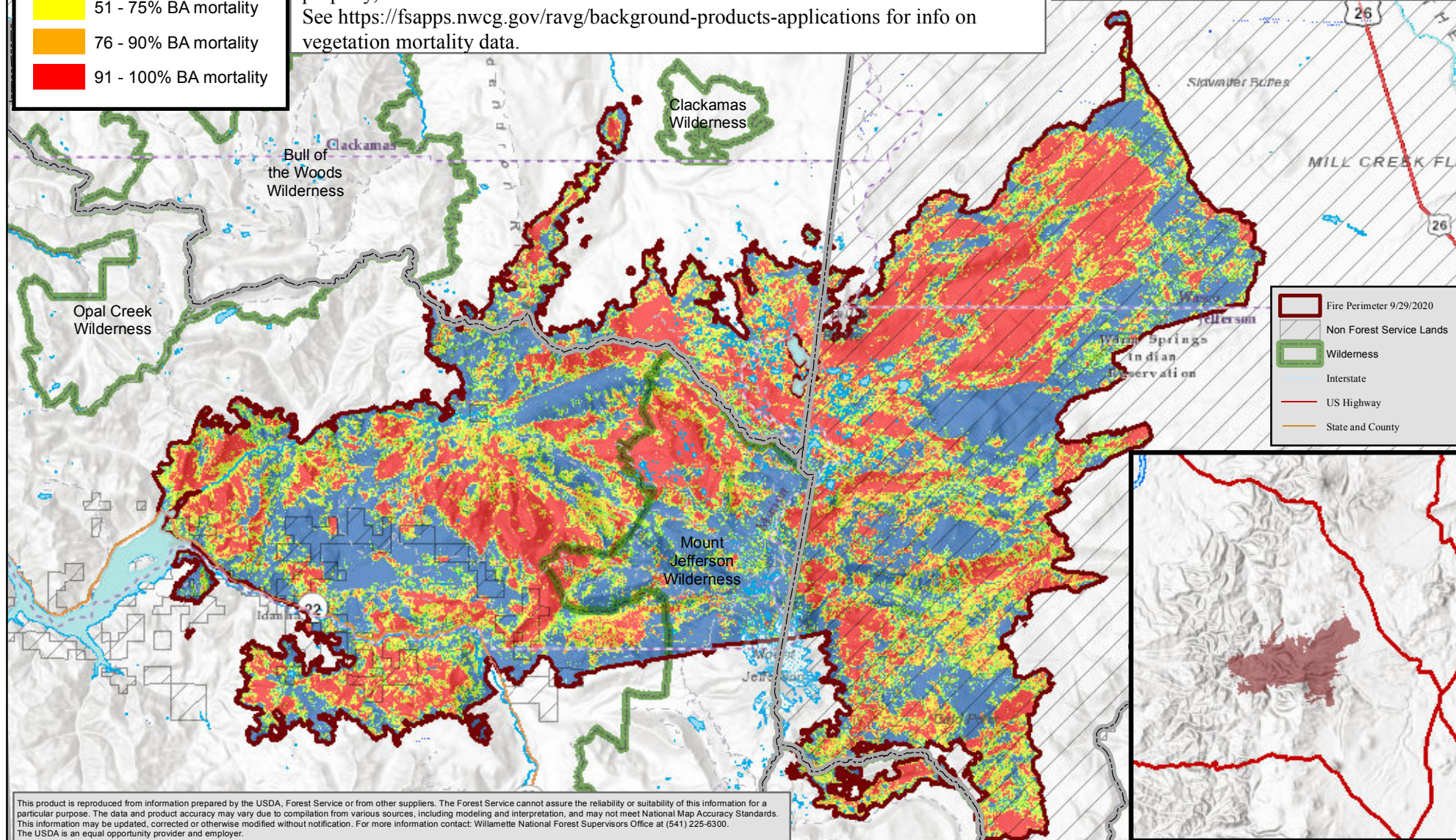
BAER Burned Area Emergency Response

Lionshead BAER Vegetation Mortality Basal Area Loss

Willamette National Forest
October 11, 2020



0 1.25 2.5 5 7.5 10 Miles



This product is reproduced from information prepared by the USDA, Forest Service or from other suppliers. The Forest Service cannot assure the reliability or suitability of this information for a particular purpose. The data and product accuracy may vary due to compilation from various sources, including modeling and interpretation, and may not meet National Map Accuracy Standards. This information may be updated, corrected or otherwise modified without notification. For more information contact: Willamette National Forest Supervisors Office at (541) 225-6300. The USDA is an equal opportunity provider and employer.