



Black Creek Hiking Trail

De Soto Ranger District



Ranger District Office
654 Frontage Drive West
Wiggins, MS 39577
601-528-6160



Location
1700 Highway 29
Brooklyn, MS 39425



Open Dates/Hours
Open year round unless weather conditions require closures.



Campsites
Primitive camping is available



Water
Water is available if using filter



Restrooms
Restrooms are not available



Trash Pick-up
Pack out all trash



Fees
Day Use – Free

Discover the hidden beauty of the piney woods in the Gulf Coastal Plain by hiking one of Mississippi's longest and most challenging trails. The Black Creek Trail is 40 miles in length and travels next to the Black Creek Wild and Scenic River, over rolling hills and meanders through the flat land of the Black Creek flood plain. Approximately 10.8 miles of the trail is located in the Black Creek Wilderness. Hikers can access the trail from Hwy 29 Trailhead, Fairley Bridge Landing, CCC Camp, and Big Creek Landing.

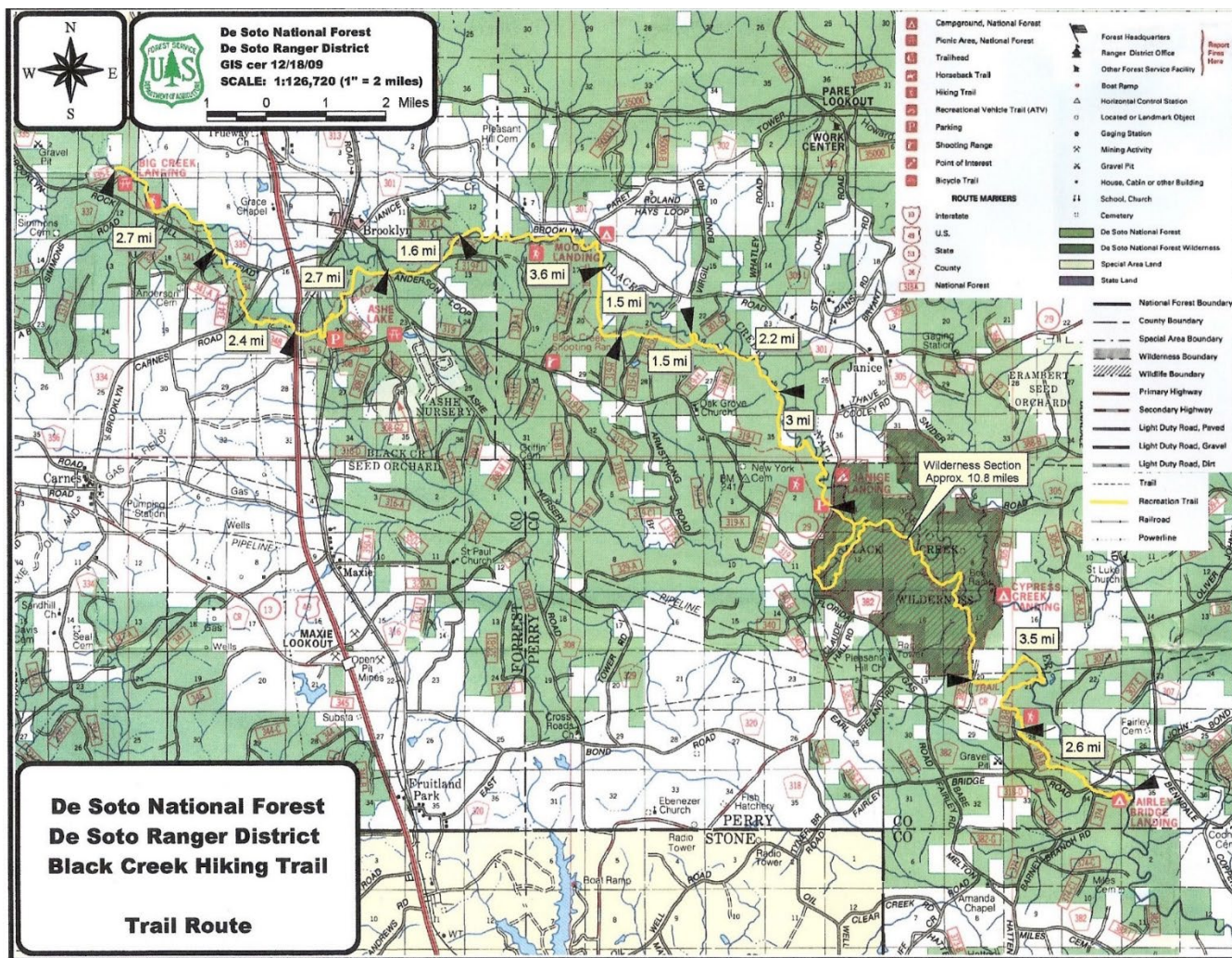
Trails nearby:

Closest Town: Brooklyn
County: Forest & Perry

Latitude: 30° 59' 12.440
Longitude: 89° 03' 15.230



Black Creek Hiking Trail



www.fs.usda.gov/recremain/mississippi/recreation

USDA is an equal opportunity provider, employer and lender.



You are responsible for your own safety. All outdoor activities have inherent risks and you may encounter a variety of unexpected and/or dangerous conditions. It is your responsibility to be informed and take precautions. Learn more at www.fs.usda.gov/r8.