



Woodman Springs Shooting Range

Homochitto Ranger District



Ranger District Office
1200 Hwy. 184 East
Meadville, MS 39653
601-384-5876

Woodman Springs Shooting Ranger offers a shooting shelter and 25, 50, and 100 yard markers. It has 4 concrete shooting tables. No attendant is on duty. Please follow all gun handling rules.



Location
Located approximately 3 miles north of Gloster on Hwy 33

Trails nearby: Brushy Creek Horse Trail



Open Dates/Hours
Open year-round unless weather conditions require closures

Closest Town: Gloster **Latitude:** 31.240231
County: Amite **Longitude:** -91.013457

Day Use Hours: Sunrise to sunset



Campsites
Camping is not available



Water
Water is not available



Restrooms
Restrooms are not available



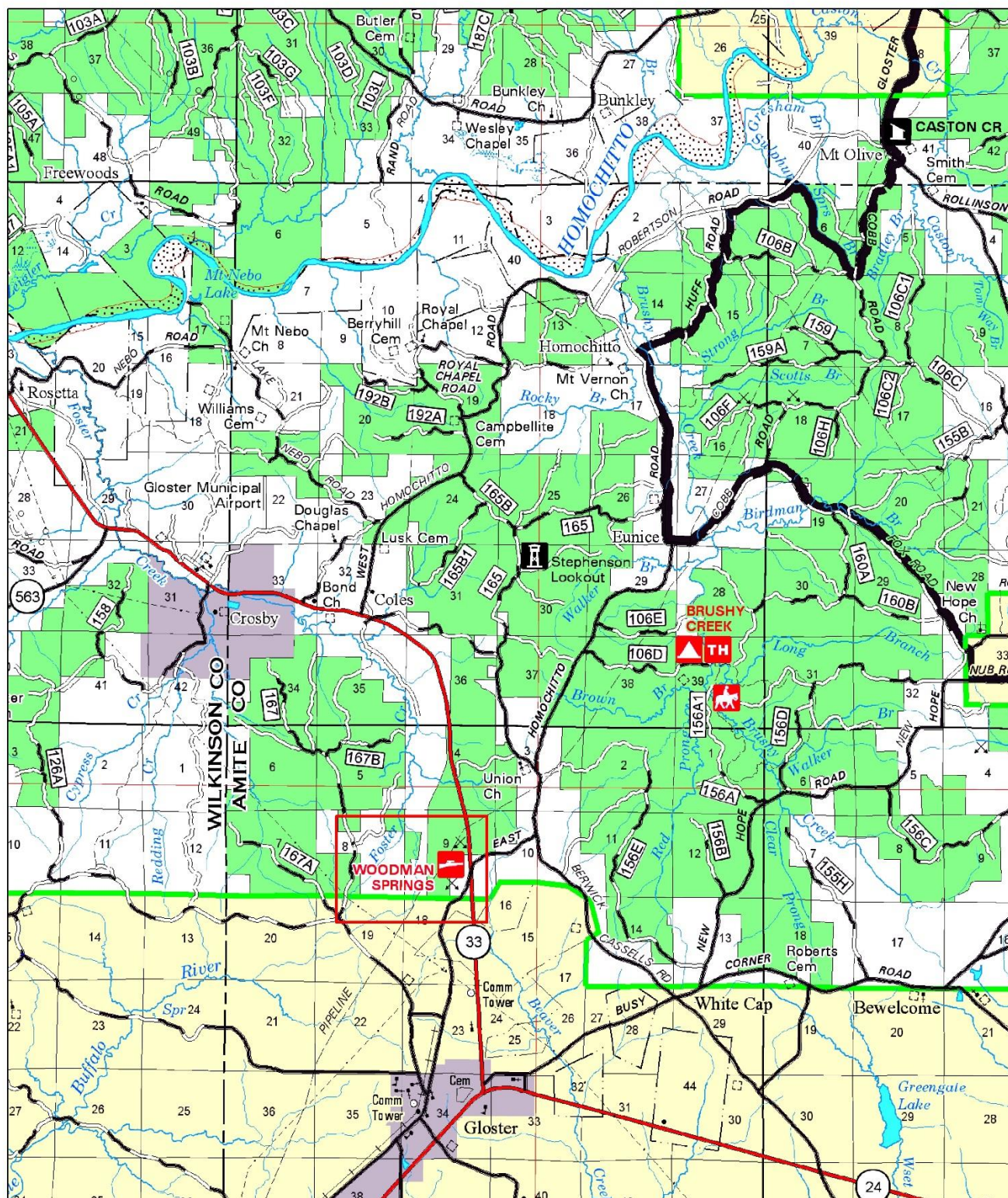
Trash Pick-up
Trash pick-up is available



Fees
Range Use - \$3 per vehicle



Woodman Springs Shooting Range



www.fs.usda.gov/recremain/mississippi/recreation

USDA is an equal opportunity provider, employer and lender.



You are responsible for your own safety. All outdoor activities have inherent risks and you may encounter a variety of unexpected and/or dangerous conditions. It is your responsibility to be informed and take precautions. Learn more at www.fs.usda.gov/r8.