



P.O.W. Lake Recreation Area

De Soto Ranger District



Ranger District Office
654 Frontage Drive West
Wiggins, MS 39577
601-528-6160



Location
10000 Bethel Road
Saucier, MS 39574



Open Dates/Hours
Open year round unless weather conditions require closures.



Campsites
No camping is allowed



Water
Water is not available



Restrooms
Restrooms are not available



Trash Pick-up
Pack out all trash



Fees
Day Use – Free

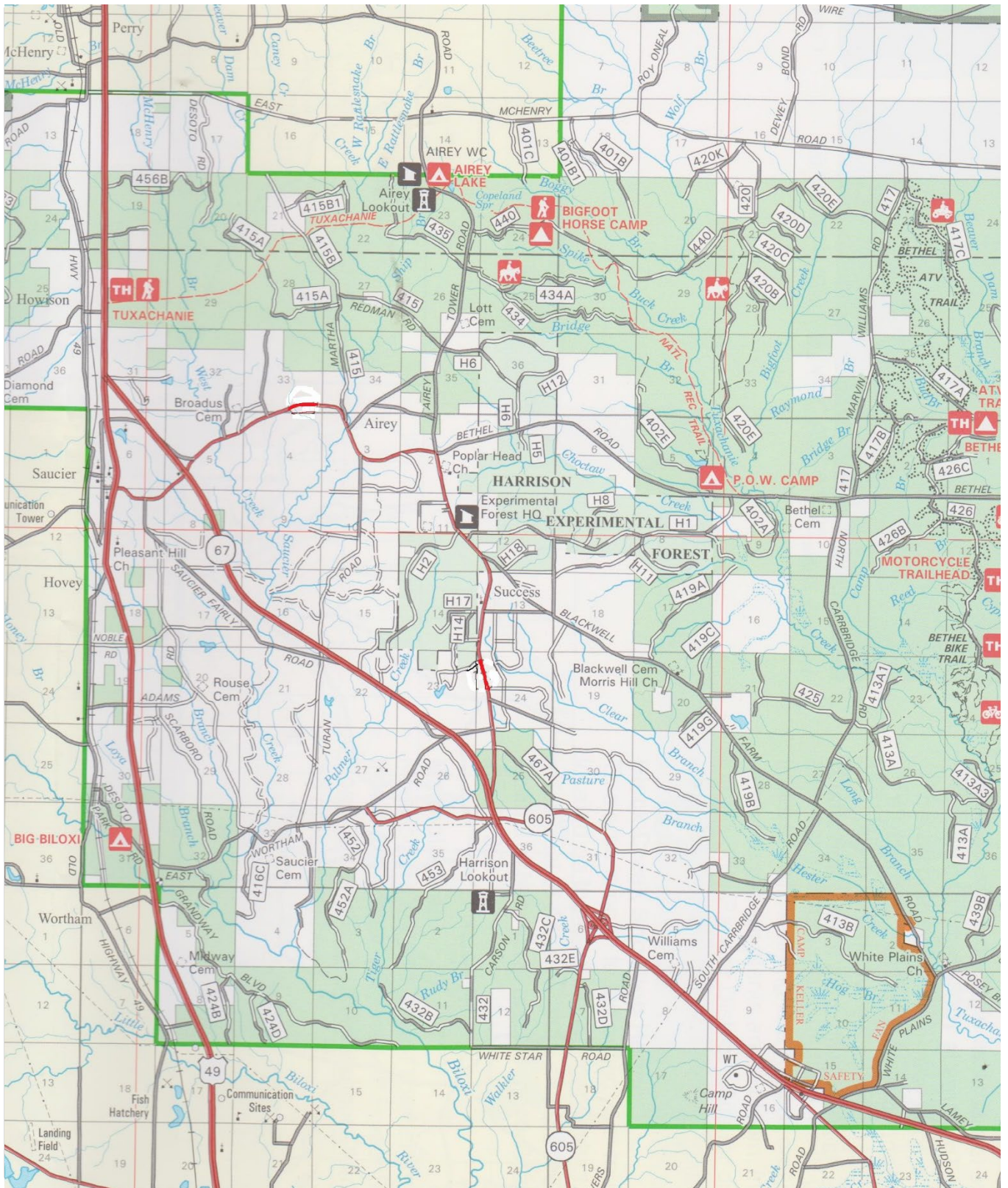
The P.O.W. Recreation Area lies beside a 7 acre lake at the southern end of the Tuxachanie Hiking Trail. The site is an abandoned World War II Navy rifle range. The old ammunition bunkers are still present. This rustic area provides primitive camping, fishing, and hiking. The lake provides fishing opportunities for bass, bluegill, and catfish.

Trails nearby: Tuxachanie Hiking and Bigfoot Horse Trails

Closest Town: Saucier **Latitude:** 30° 38' 15.689
County: Harrison **Longitude:** 89° 00' 18.112



P.O.W. Lake Recreation Area



www.fs.usda.gov/recremain/mississippi/recreation

USDA is an equal opportunity provider, employer and lender.



You are responsible for your own safety. All outdoor activities have inherent risks and you may encounter a variety of unexpected and/or dangerous conditions. It is your responsibility to be informed and take precautions. Learn more at www.fs.usda.gov/r8.