



Rattlesnake Bay OHV Trail

De Soto Ranger District



Ranger District Office
654 Frontage Drive West
Wiggins, MS 39577
601-528-6160



Location
3440 Highway 29
New Augusta, MS 39462



Open Dates/Hours
Open year round unless weather conditions require closures. Trail may be closed due to weather conditions and riders may find the gate closed as a result.

Day Use Hours: Sunrise to sunset

“Call Before You Haul”
(601)528-6180

Rattlesnake Bay Off-highway Vehicle (OHV) Trail was established for all terrain vehicles of widths no greater than 50 inches. The trail is 31.6 miles in length and provides riders with a winding, curving trail that follows contours and avoids steep slopes and wet drainages with three loops lengths of two miles, seven miles and 22 miles. The trail is located in the special use permit area for the Camp Shelby Military Training Site. Wheeled traffic, tank, and foot maneuver exercises may occur and are sometimes conducted in the area during the months of May through September. A few miles of the trail are used for some of these exercises; however, riding can still occur in the area.

Trails nearby: None

Closest Town: New Augusta **Latitude:** 31° 10' 04.930
County: Perry **Longitude:** 89° 00' 07.404



Campsites
Primitive camping is available



Water
Water is not available



Restrooms
Chemical toilet available



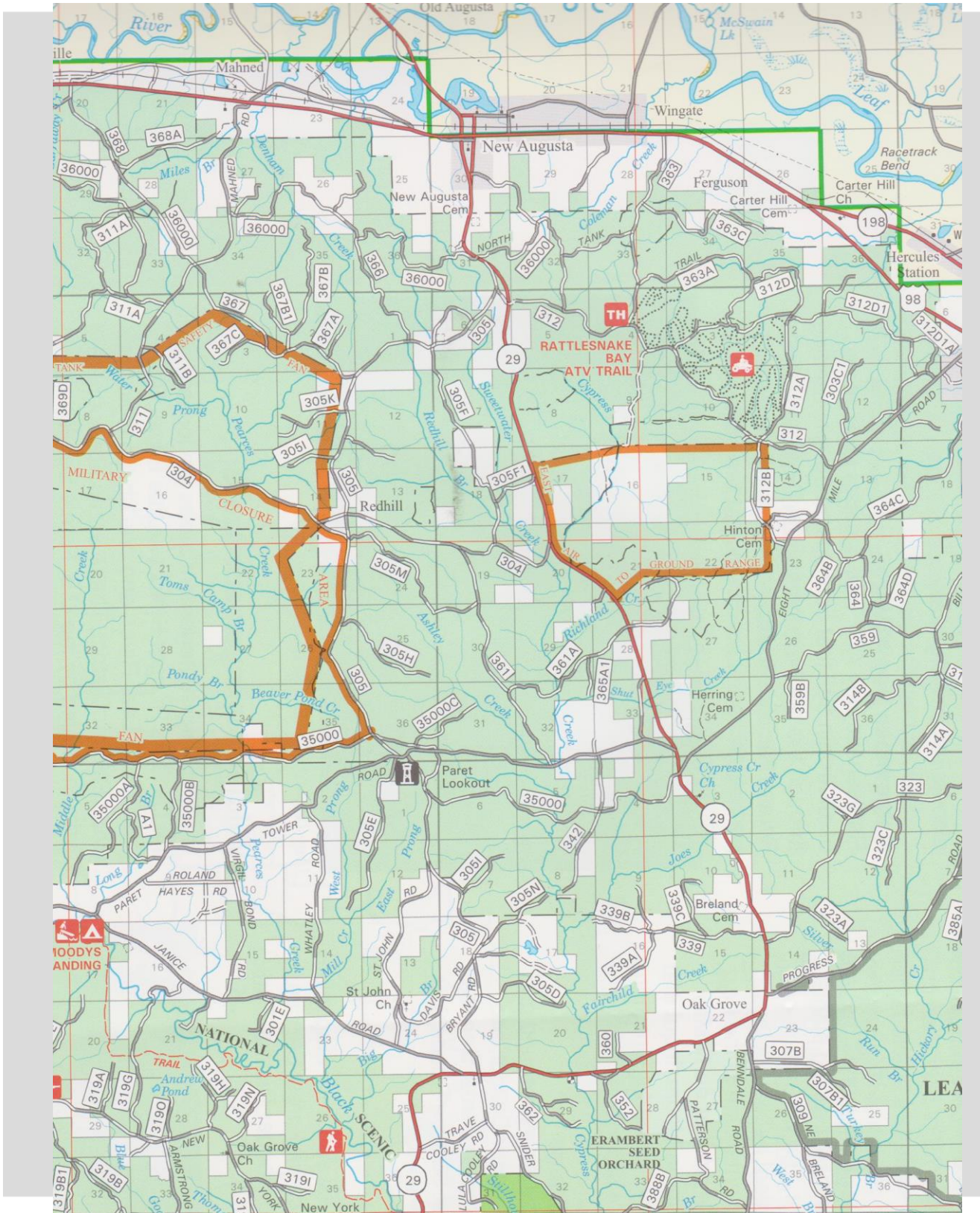
Trash Pick-up
Pack out all trash



Fees
OHV Use – \$10.00 per vehicle
\$60 Annual Pass available



Rattlesnake Bay OHV Trail



www.fs.usda.gov/recremain/mississippi/recreation

USDA is an equal opportunity provider, employer and lender.



You are responsible for your own safety. All outdoor activities have inherent risks and you may encounter a variety of unexpected and/or dangerous conditions. It is your responsibility to be informed and take precautions. Learn more at www.fs.usda.gov/r8.