



Nebo Ridge Trail



Location specific information

Use type: hiking, horse riding, mountain biking

Length of trail: 8.3 miles

Facilities: The northern trailhead has a parking area and may be able to accommodate horse trailers. The southern trailhead is small and cannot accommodate horse trailers.

Special features: scenic views from ridgetop trail

Directions

GPS coordinates to North trailhead:
39° 4' 46.103"N, 86° 14' 55.615"W

GPS coordinates to South trailhead:
39° 1' 6.266"N, 86° 14' 31.712"W

To north trailhead: From the Ind. 46/135 intersection (east of Nashville), go south on Ind. 135 for 9 miles to Story. Continue straight on Elkinsville Road for 3 miles, bearing left at the fork. The parking lot is on the left.

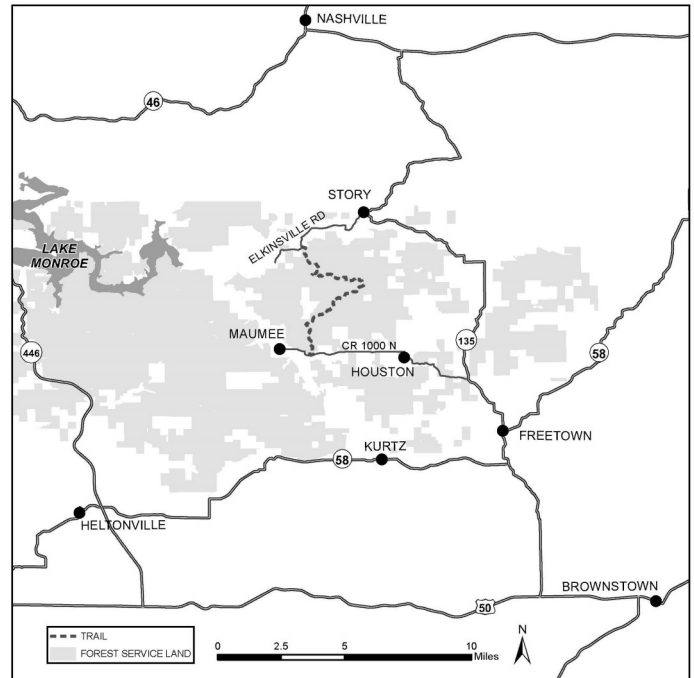
To south trailhead: From Story, go south on Ind. 135. Turn right on County Road 1100 N, then turn left on County Road 675 W to Houston. Bear right onto County Road 975, then 800 W, to left on W 1000 N. Parking on right.

Safety

In case of emergency call 911

Nearest hospital: Seymour, Ind.

Brown County Sheriff: 812-988-6655



Indiana Conservation Officer Dispatch:
812-837-9536

Use caution during hunting seasons.
Blaze orange clothing is recommended.

Etiquette and rules

Horse riders and mountain bikers (age 17 years and older) are required to have a permit and stay on designated trails. Permits are available from our offices, local vendors and online. Forest trails are closed to all motorized vehicles and e-bikes.

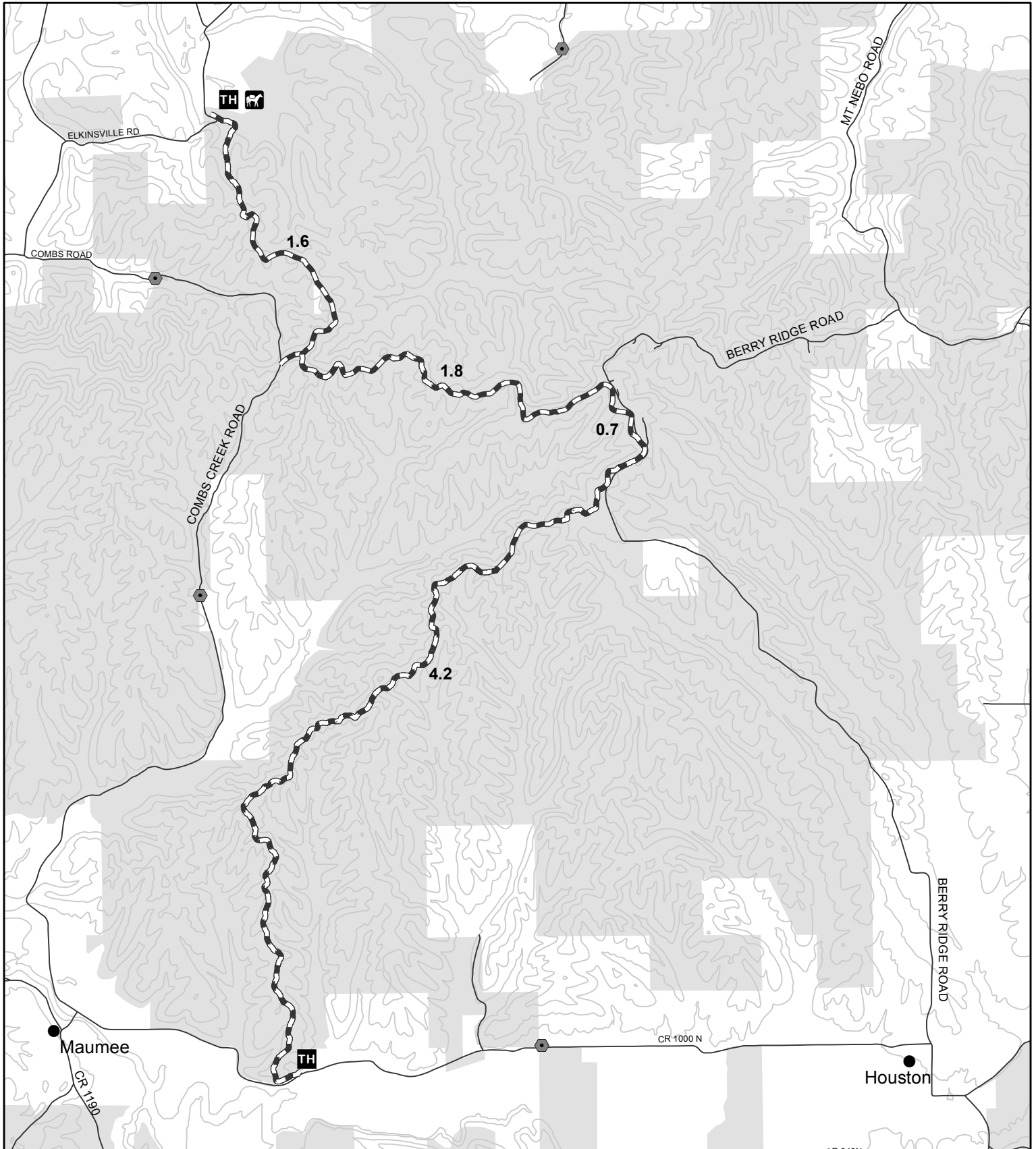
Follow Leave No Trace principles.

Private and public land ownership is scattered within the forest boundary. Visitors must take care to stay on National Forest System lands and respect private property.



Scan here to see a georeferenced map.

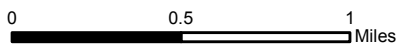
NEBO RIDGE TRAIL



LEGEND

Updated 3/18

- TRAILHEAD
- HORSE TRAILER PARKING
- GATES
- TRAILS
- ROADS
- 50 FT CONTOUR
- FOREST SERVICE LAND



Original data compiled from multiple source data and may not meet National Mapping Accuracy Standards. For specific data source information contact the Hoosier National Forest. No warranty is made to the contents or accuracy of the data. USDA is an equal opportunity provider, employer, and lender.

