



# Youngs Creek Campground and Trails



## Location specific information

Use type: hiking, mountain biking, horse riding and primitive camping

Length of trail: 11.7 miles

Facilities: trailhead with horse trailer parking, additional parking lot, picnic shelter, primitive campground with vault toilets, hitching racks, highline posts, water for livestock (not potable for humans) provided April - October but we recommend bringing water

Special features: shady trails, scenic hardwood forest, variety of terrain

## Directions

GPS coordinates:

38° 30' 13.276"N, 86° 27' 57.505"W

From Paoli, go south on Ind. 37. Turn right onto Beech Grove Road and continue 0.9 miles. Turn left onto County Road 50 W. Drive 1.2 miles to the entrance on the left.

## Safety

In case of emergency call 911

Nearest hospital: Paoli, Ind.

Orange County Sheriff: 812-723-2417

Indiana Conservation Officer Dispatch: 812-837-9536

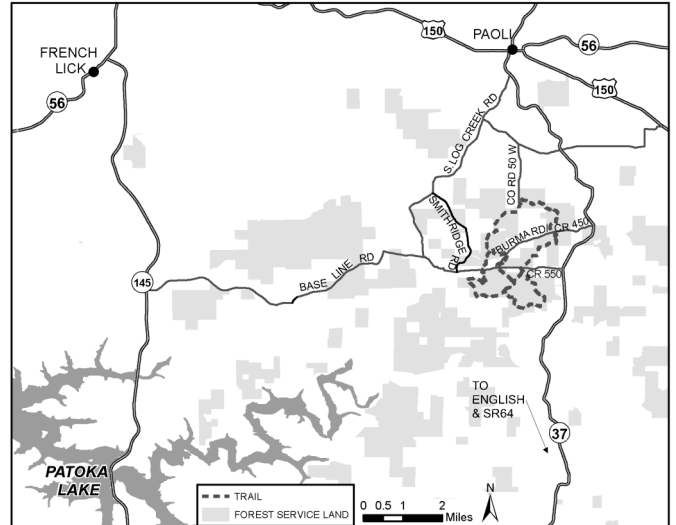
Use caution during hunting seasons. Blaze orange clothing is recommended.

## Etiquette and rules

Horse riders and mountain bikers (age 17 years and older) are required to have a permit and stay on designated trails. Permits are available from our offices, local vendors and online. Forest trails are closed to all motorized vehicles and e-bikes.

Follow Leave No Trace principles.

Private and public land ownership is scattered within the forest boundary. Visitors must take care to stay on National Forest System lands and respect private property.

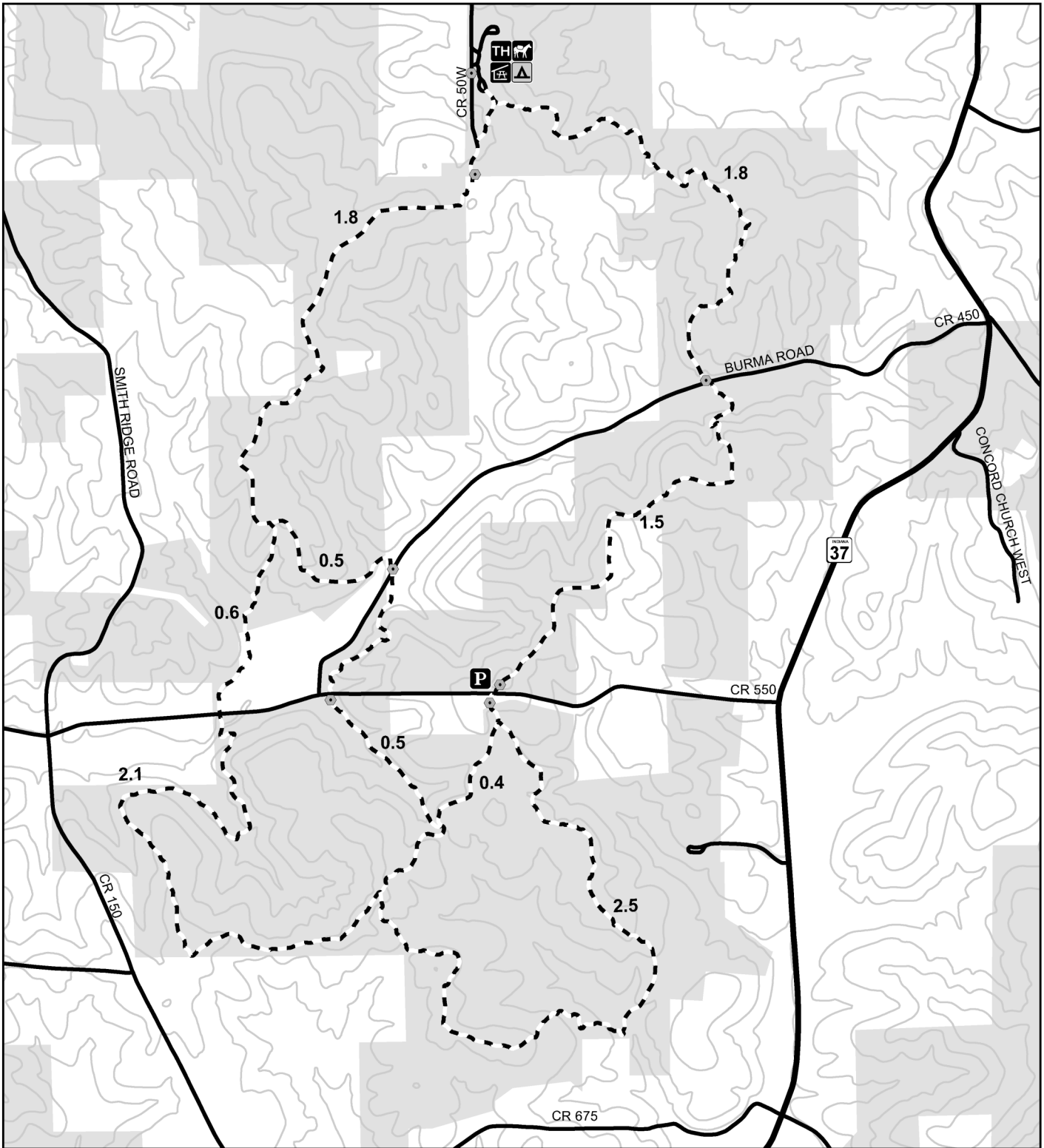


**Firewood Restrictions:** Possessing, storing, or transporting any part of a tree EXCEPT as described below (36 CFR 261, 58(t): It is kiln-dried scrap lumber with no bark (processed lumber). It is from your home or other Indiana location and has all bark removed. It has an Indiana DNR compliance stamp. Downed dead wood which is collected and used within the developed recreational area that the campsite is located, or collected and used within the immediate vicinity of a dispersed campsite on the Hoosier National Forest. Downed dead wood obtained on the Hoosier National Forest within the same defined county, or from the Hoosier National Forest from those counties directly adjoining, and which is obtained by the holder of a valid firewood permit.



Scan here to see a geo-referenced map.

# YOUNGS CREEK HORSE CAMP AND TRAILS

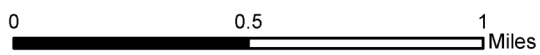


## LEGEND

- |                         |                |         |                     |
|-------------------------|----------------|---------|---------------------|
| PARKING                 | PICNIC SHELTER | TRAIL   | 50 FT CONTOUR       |
| YOUNGS CREEK HORSE CAMP | TRAILHEAD      | ROAD    | FOREST SERVICE LAND |
| HORSE TRAILER PARKING   | GATE           | Highway |                     |



Updated 2/2020



Original data compiled from multiple source data and may not meet National Mapping Accuracy Standards. For specific data source information contact the Hoosier National Forest. No warranty is made to the contents or accuracy of the data. USDA is an equal opportunity provider, employer, and lender.