



Brown County D Trail



Location Specific Information

Use type: hiking, mountain biking, horse riding

Length of trail: 2.0 miles

Facilities: A small parking area is located at the trailhead.

Special features: This trail winds through scenic hardwood forest, offering views along the way, and connects to trails within Yellowwood State Forest and Brown County State Park to the north.

Directions

GPS coordinates:

39°5'9"N , 86°16'19"W

Take Ind. 135 to the intersection in Story. Travel west 2.7 miles on Elkinsville Road to Blue Creek Road. Turn Right onto Blue Creek Road and travel 2.3 miles to the end of the road. The trailhead is located on the north side at the end of Blue Creek Road.

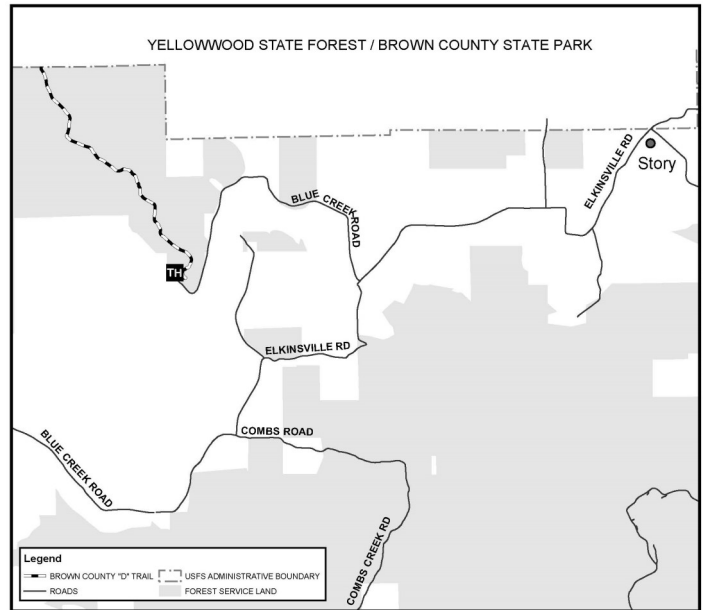
Safety

In case of emergency call 911

Nearest hospital: Bloomington, Ind.

Brown County Central Dispatch:
812-988-6655

Indiana Conservation Officer Dispatch:
812-837-9536



Use caution during hunting seasons. Blaze orange clothing is recommended.

Etiquette and rules

Horse riders and mountain bikers (age 17 years and older) are required to have a permit and stay on designated trails. Permits are available from our offices and local vendors (see website). Forest trails are closed to all motorized vehicles.

Follow Leave No Trace principles.

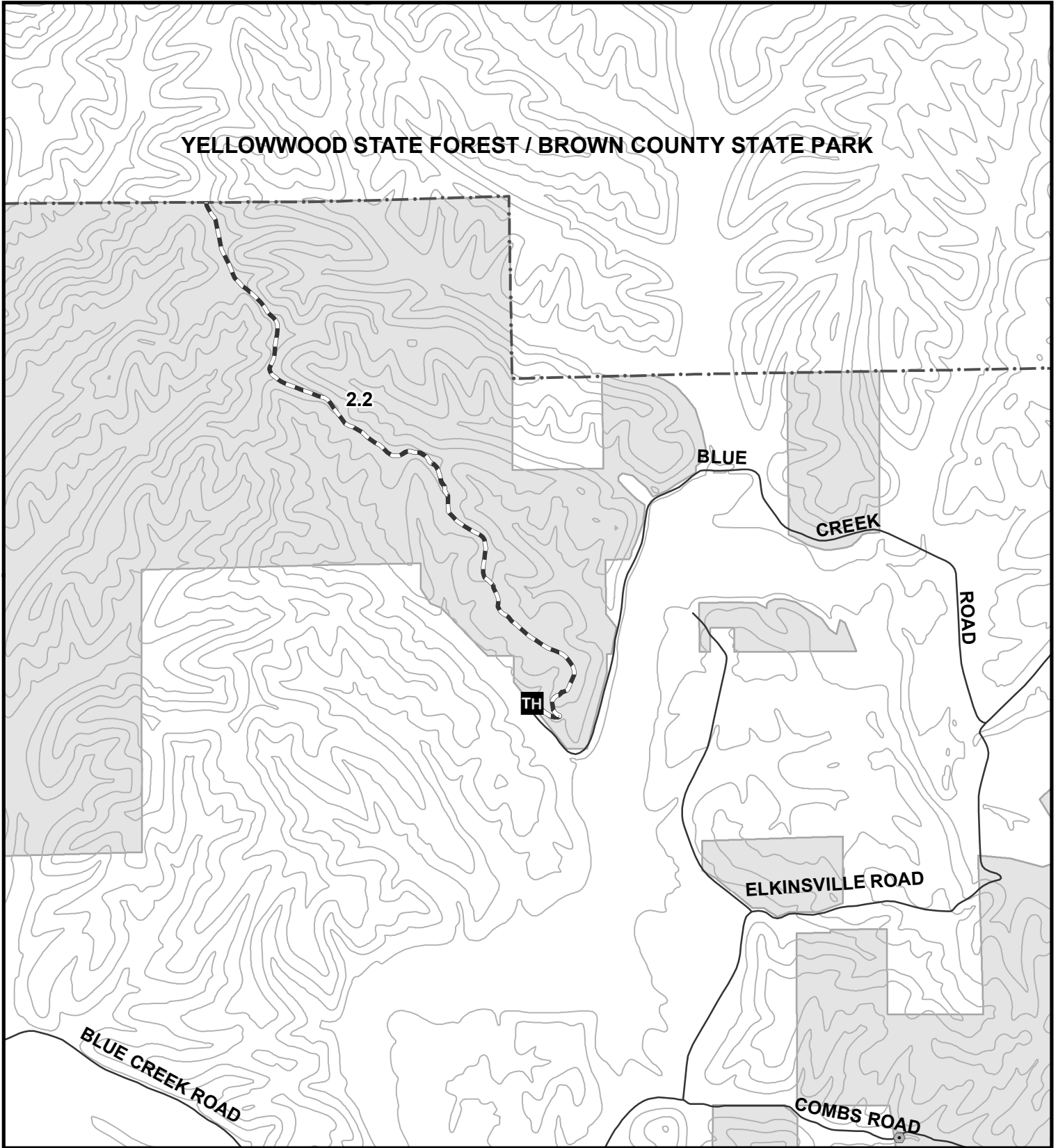
Private and public land ownership is scattered within the Forest boundary. Visitors must take care to stay on National Forest System lands and respect private property.



Scan here to see a detailed map.

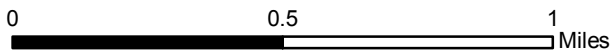


BROWN COUNTY "D" TRAIL



LEGEND

- TH** TRAILHEAD
- 50 FT CONTOUR
- USFS ADMINISTRATIVE BOUNDARY
- GATES
- BROWN COUNTY "D" TRAIL
- FOREST SERVICE LAND



Updated 9/18



Original data compiled from multiple source data and may not meet National Mapping Accuracy Standards. For specific data source information contact the Hoosier National Forest.
 No warranty is made to the contents or accuracy of the data.
 USDA is an equal opportunity provider, employer, and lender.