

Allegheny National Forest Interactive Hunting Map Guide

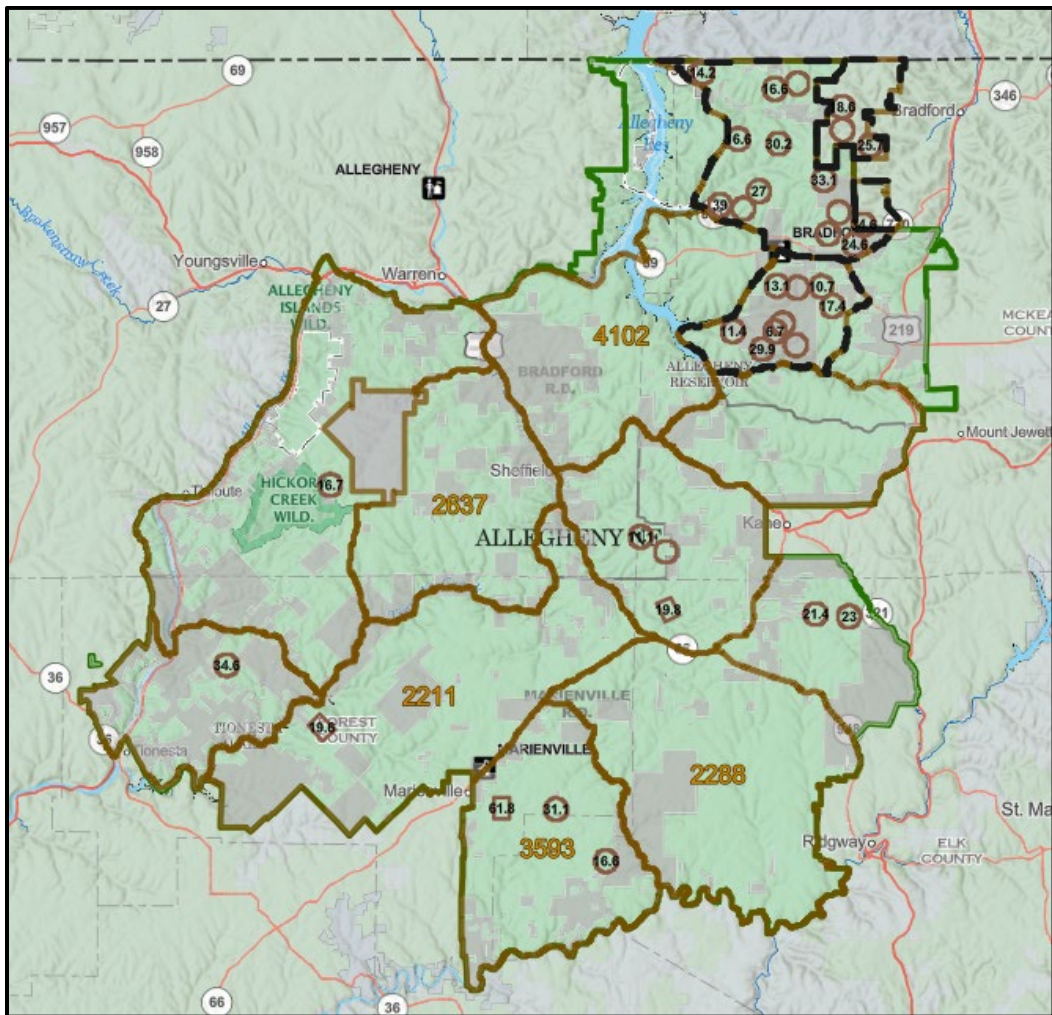


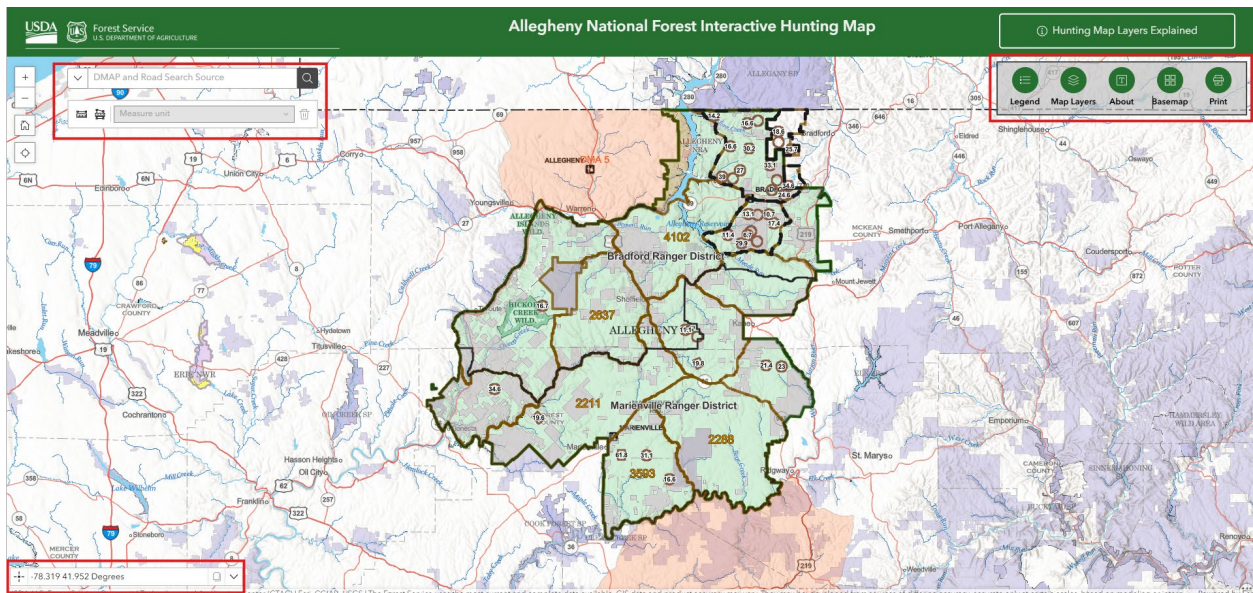
Table of Contents:

Contents

Table of Contents:	2
Map Widgets	3
Map Layers	3
My Location Widget.....	5
Home Button Widget.....	5
Zoom Slider Widget.....	6
Search Widget	6
Basemap Widget.....	7
Legend Widget	8
Print Widget	8
Measurement Widget.....	10
Layers Explained Page	11
Forest Boundary, Ranger District Boundaries, & Non-Forest Service Ownership Layers	11
Deer Management Assistance Program (DMAP) Unit & Deer Density Index Layers	12
Forest Type Layer	12
Forest Age Class Layer	12
National Forest System Roads Layers	12

Map Widgets

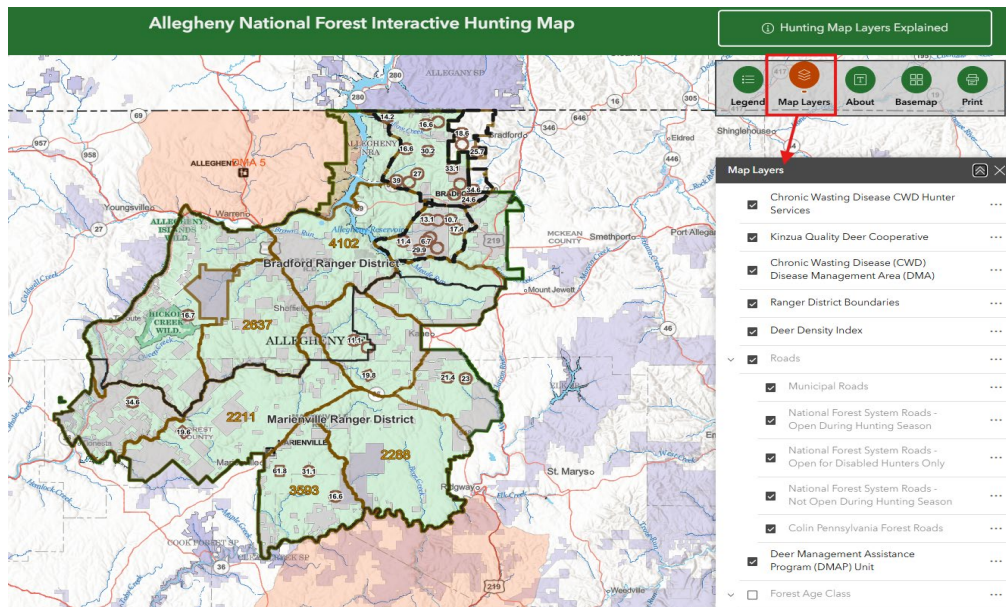
Widgets, which can be thought of as tools, are features embedded in the map designed to make the map usable in many ways. These are the widgets in the map: My Location, Home Button, Zoom Slider, Search, Basemap, Legend, Layer List, Print, Measure, and Coordinate Conversion.



Map Layers

The information available in the Allegheny National Forest (ANF) Interactive Hunting Map (simply referred to from this point forward as the map) is displayed as layers. The term layer refers to a dataset that displays geographic information by using symbols and text on a map. Layers are used to separate information into different categories to make the map easier to read and understand.

There are multiple layers in the map. By default, the map opens with three layers (Forest Boundary, Ranger District Boundaries, and Deer Management Assistance Program (DMAP) Unit) and hunting road layers already turned on. To turn these layers off and on, open the Map Layers widget icon. This will open a list of all layers available in the map. Click on the box in front of the layer name to turn each layer on or off. If a blue blinking dot appears to the right of a layer, that indicates the layer is currently loading on the map.



All layers can be turned on, though more information is displayed and can be hard to interpret. To maximize readability, only turn on layers you're interested in viewing.

Some layers have a certain visibility range, if you are zoomed too far out or in the layer will be grayed out. To view, adjust your zoom using the Zoom Slider widget.

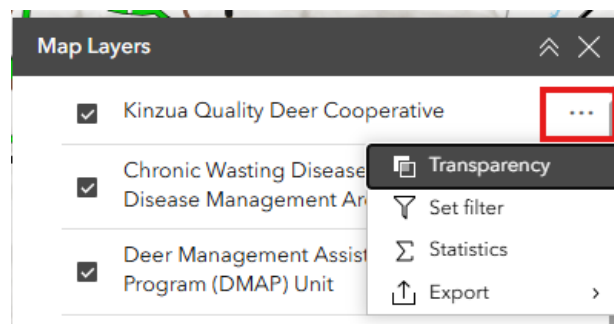
By clicking the three dots to the right side of a layer, the following functions are available:

Transparency: Sets the transparency for the layer.

Set Filter: Allows the user to set a filter to only display certain features.

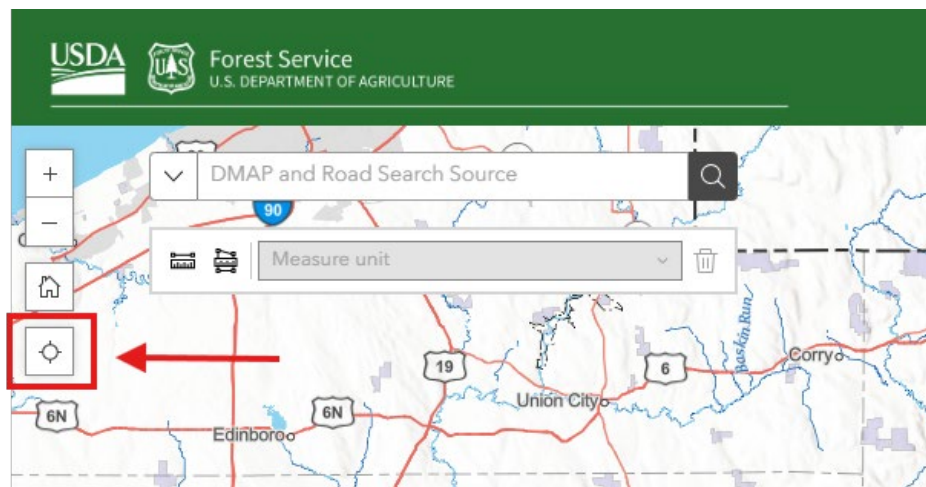
Statistics: Calculates statistics on attributes in the dataset.

Export: Allows the export of data.



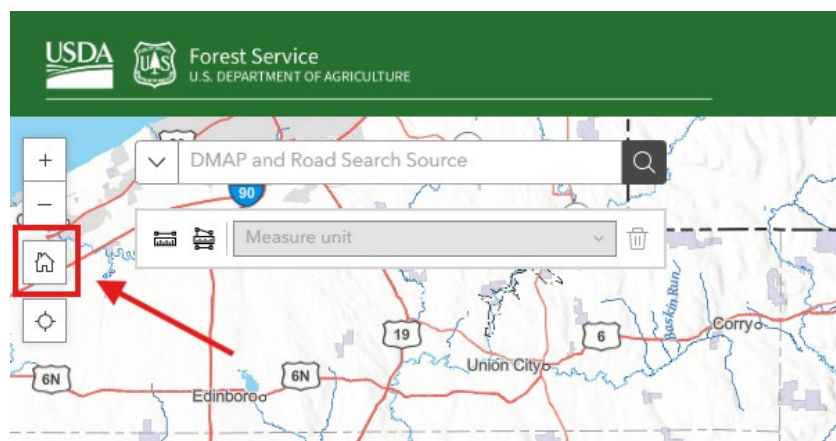
My Location Widget

If connected to an internet network, the My Location widget allows the detection of your physical location and displays it on the map. Click the My Location widget icon to enable your location detection.



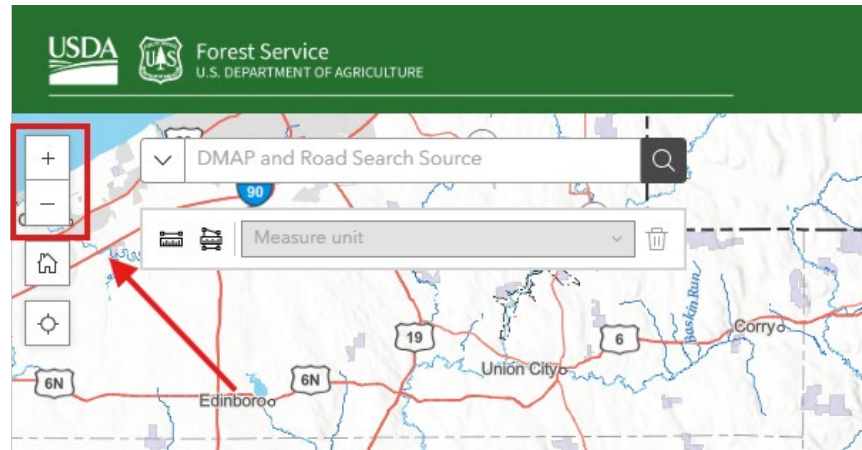
Home Button Widget

The Home Button widget resets the map to the map size displayed when initially opened. Click the Home Button widget icon at any time to return the map extent to the default map extent.



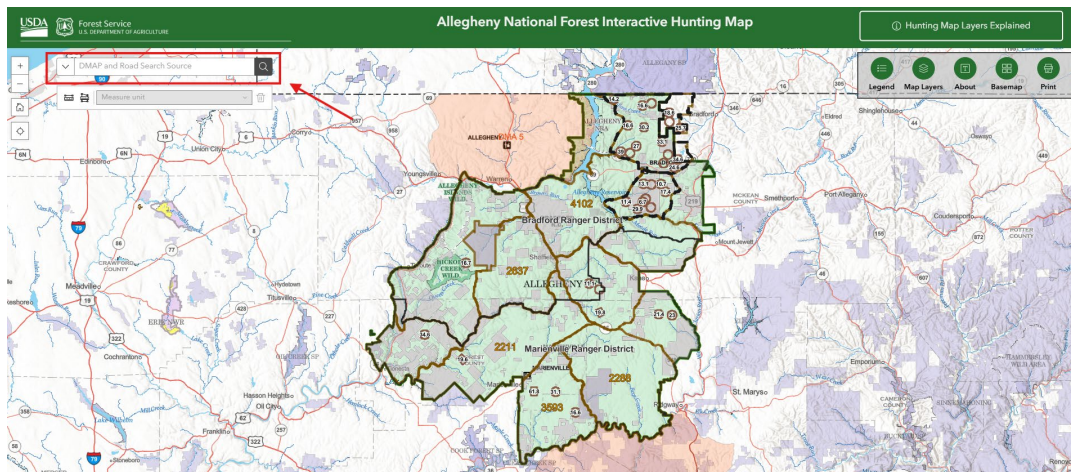
Zoom Slider Widget

The Zoom Slider widget zooms in (plus sign) or out (minus sign) at pre-determined increments, or extents, on the map. Click on the Zoom Slider widget icon to zoom in or out.



Search widget

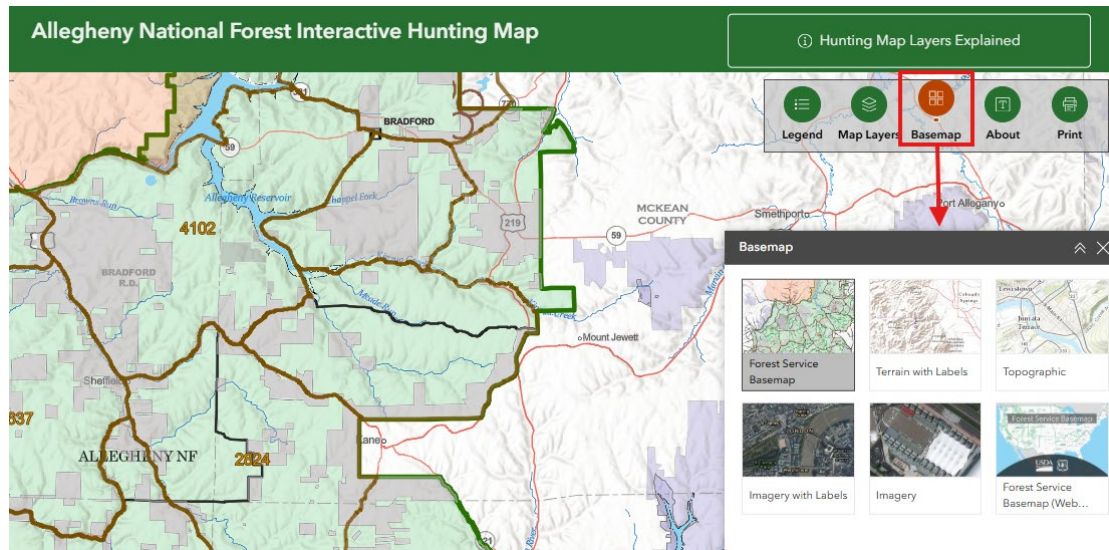
If there is a location on the map you would like to search for, type the location name in the Search widget bar.



When you enter a name or keyword in the search box, suggestions will appear as you type. A popup will appear at the location of the place on the map with additional information. By clicking on the three dots in the pop-up, you have the option to pan to, add a marker, or get directions to/from the location

Basemap Widget

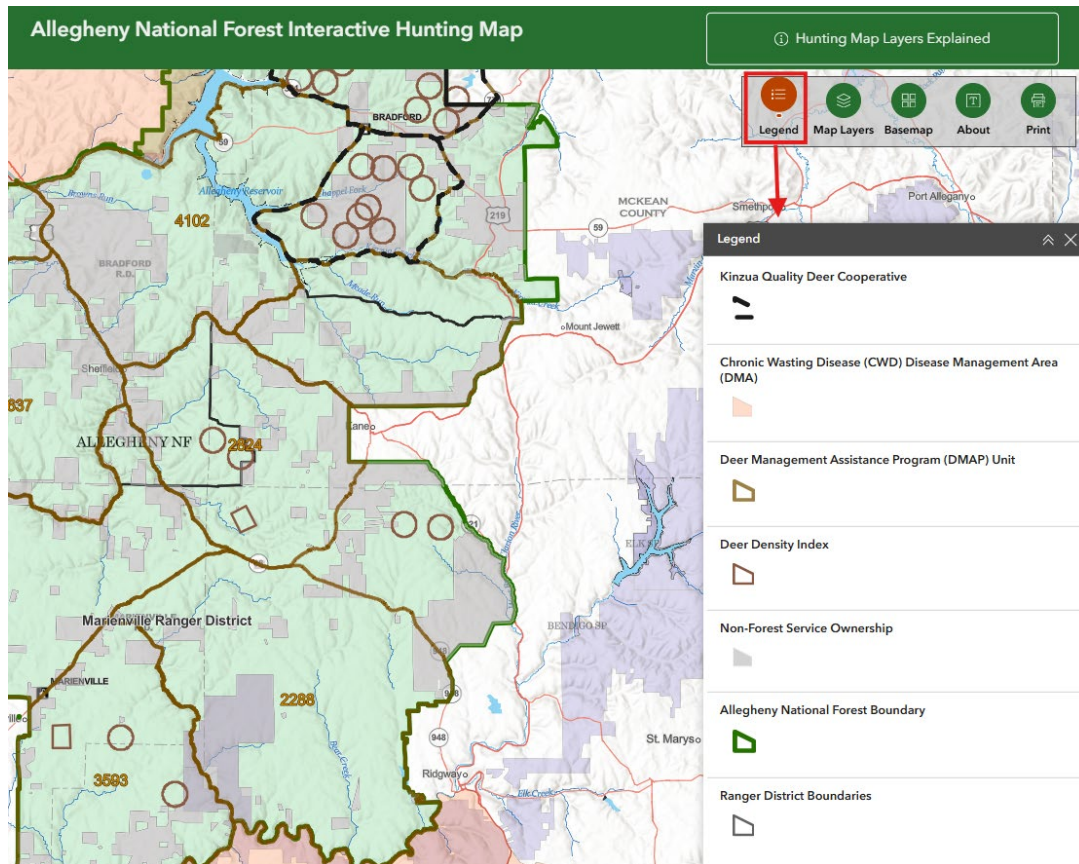
The Basemap widget allows you to select which basemap, or background, you would like to view with the map. Click the Basemap widget icon to display and select from the available basemaps.



Different basemaps may be more useful than others depending on the extent you are viewing the map. Each basemap option offers different background details about the landscape. A topographic map, for example, makes waterways and mountains easy to recognize. Please note, basemaps are not visible at all zoom extents.

Legend Widget

The Legend widget displays labels and symbols for layers that are turned on in the map. Click the Legend widget icon to display the legend window.



Print Widget

The Print widget connects the map with a printing service to allow the current map to print. Click the Print widget icon to open the Print widget. Update the name of the map select print to produce a georeferenced PDF.

Allegheny National Forest Interactive Hunting Map

Hunting Map Layers Explained

Legend

Map Layers

Basemap

About

Print

Print

Print template

Results

Template

Letter (8.5 x 11) Landscape

Title

ArcGIS Web Map

Advanced

Show print area

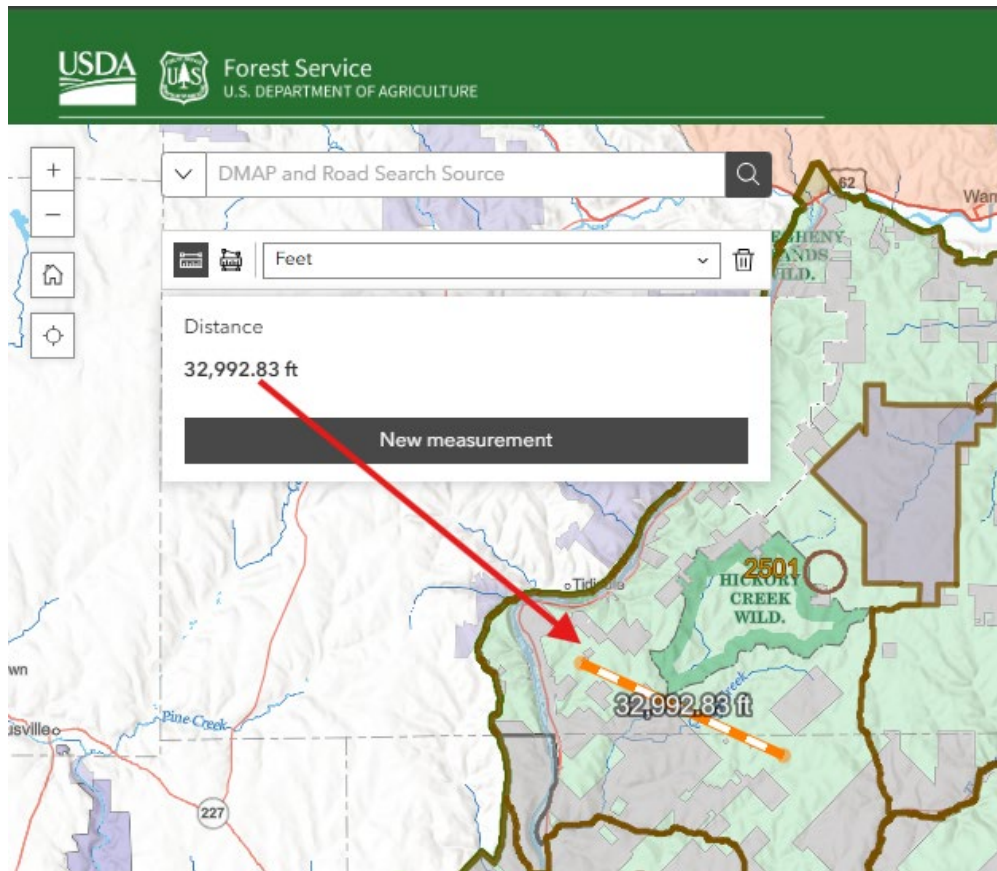
Print

data available. GIS data and product accuracy may vary. They may be developed from sources of differing accuracy, accurate only at certain scales, ba

Page | 9

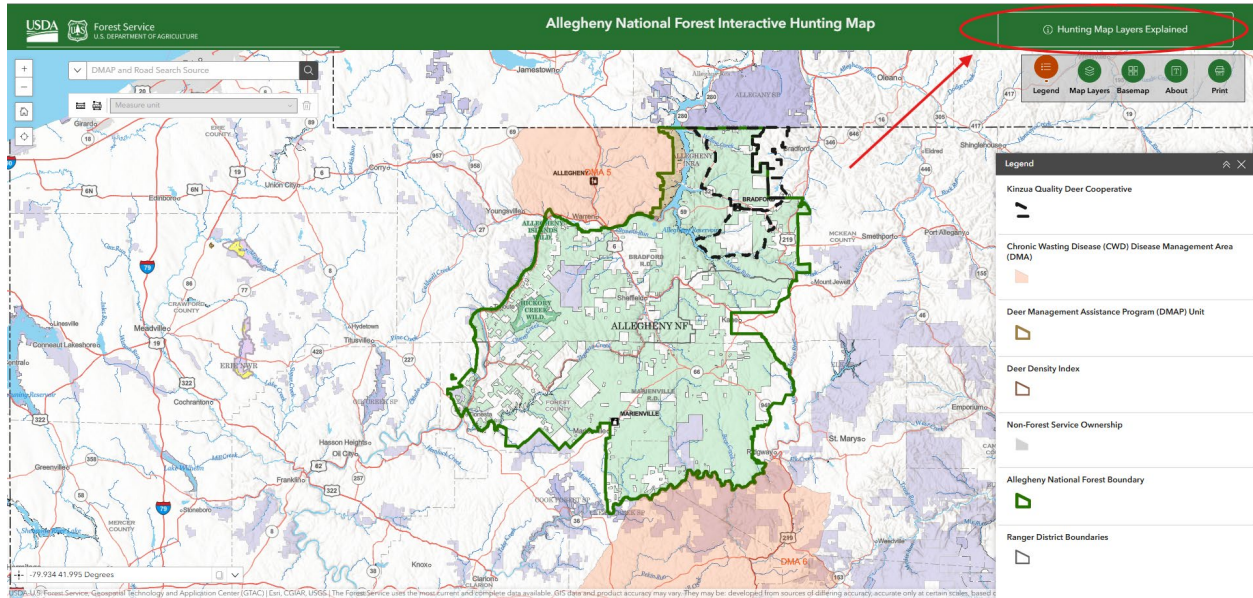
Measurement Widget

The Measurement widget allows you to measure the area of a polygon or length of a line. Click on the length or area icon on the widget and select a unit of measure.

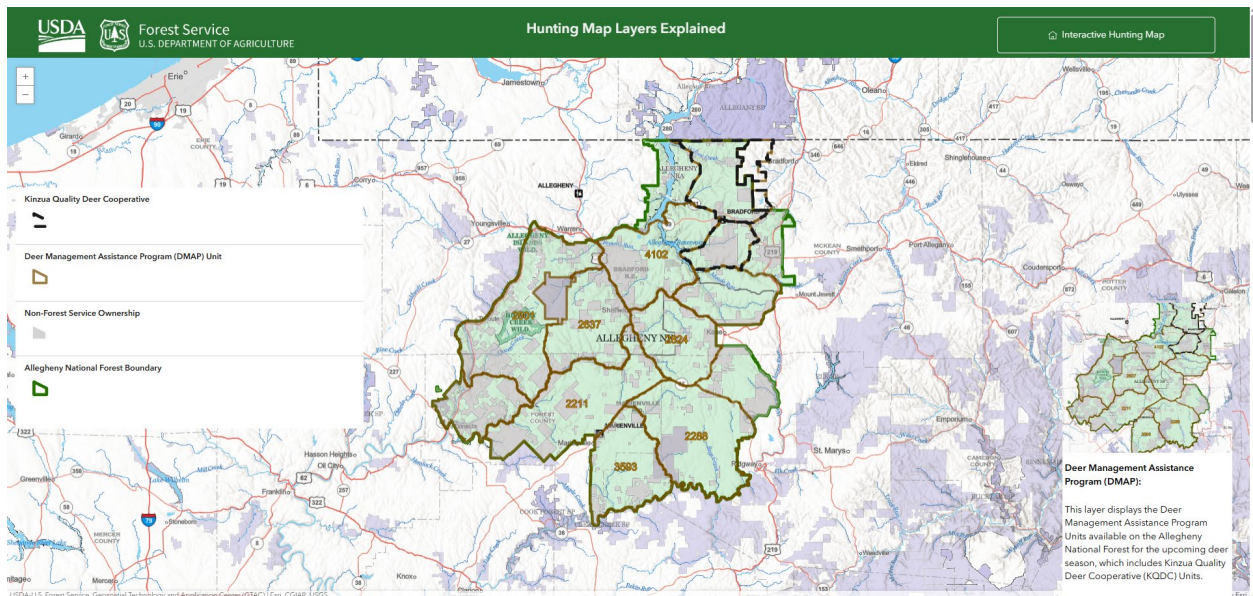


Layers Explained Page

Below is a screenshot of the Homepage of the hunting map. The button on the top right, of the screenshot below, shows the button that takes you to the Layers Explained page.



The screenshot below shows the Hunting Map Layers Explained page.



Forest Boundary, Ranger District Boundaries, & Non-Forest Service Ownership Layers

The Forest Boundary and Ranger District Boundaries layers show the administrative boundaries of the ANF and the two Ranger Districts (Bradford and Marienville Ranger

Districts) that make up the ANF. These boundaries include not only Forest Service (ANF) ownership, but also private lands and other governmental (both state and federal) agency lands. The Non-Forest Service Ownership layer shows the private lands and other governmental (both state and federal) agency lands within the ANF Forest Boundary.

National Forest System Roads Layers

The National Forest System Road layers show roads on the ANF that are open or closed during the hunting season, and roads only open for disabled hunters. A list of these roads and the dates they are open are available on the Allegheny National Forest website.

A Disabled Persons Hunting Permit issued by the Pennsylvania Game Commission is required to use the roads only open for disabled hunters during the hunting season.

The ANF's Motor Vehicle Use Map (MVUM) contains current road policy. MVUM maps are available at any of the offices or on the web under the Maps and Guides section.

Deer Management Assistance Program (DMAP) Unit & Deer Density Index Layers

The Deer Management Assistance Program (DMAP) Unit layer shows where DMAP units are available on the ANF for the upcoming deer season.

The Deer Density Index layer shows where estimates of deer density (deer per square mile) have been completed using deer pellet-group counts completed in the spring. Depending on when deer pellet group counts were able to be completed, the labeling displays either 1, 2, or 3 year-average deer density.

Forest Type Layer

The Forest Type layer shows where different forest types (oak, aspen, other hardwoods, conifer, shrub, and non-forested) are found across the ANF.

Forest Age Class Layer

The Forest Age Class layers (0-10, 11-20, 21-50, and 51+) show the age class of forested stands on the ANF.