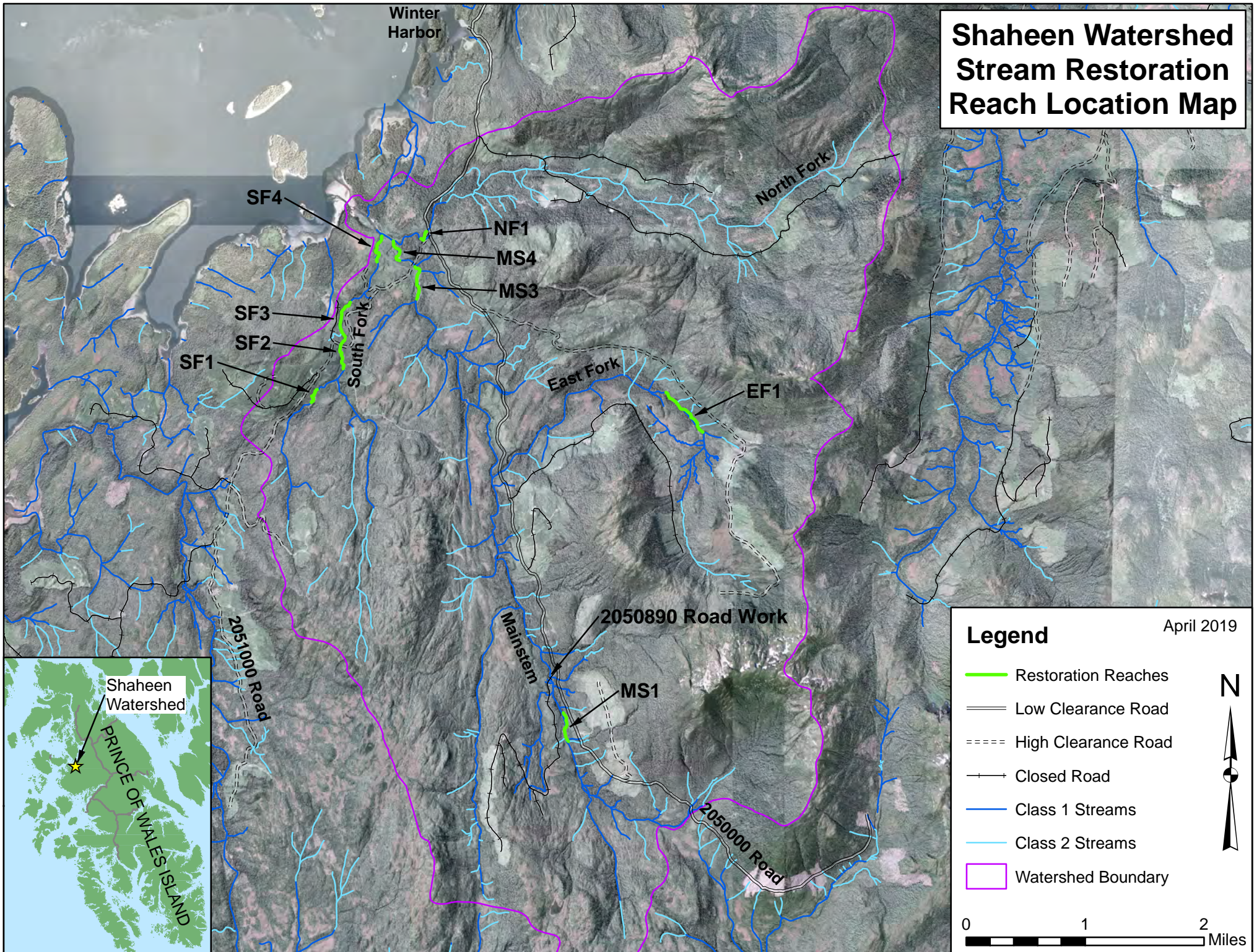
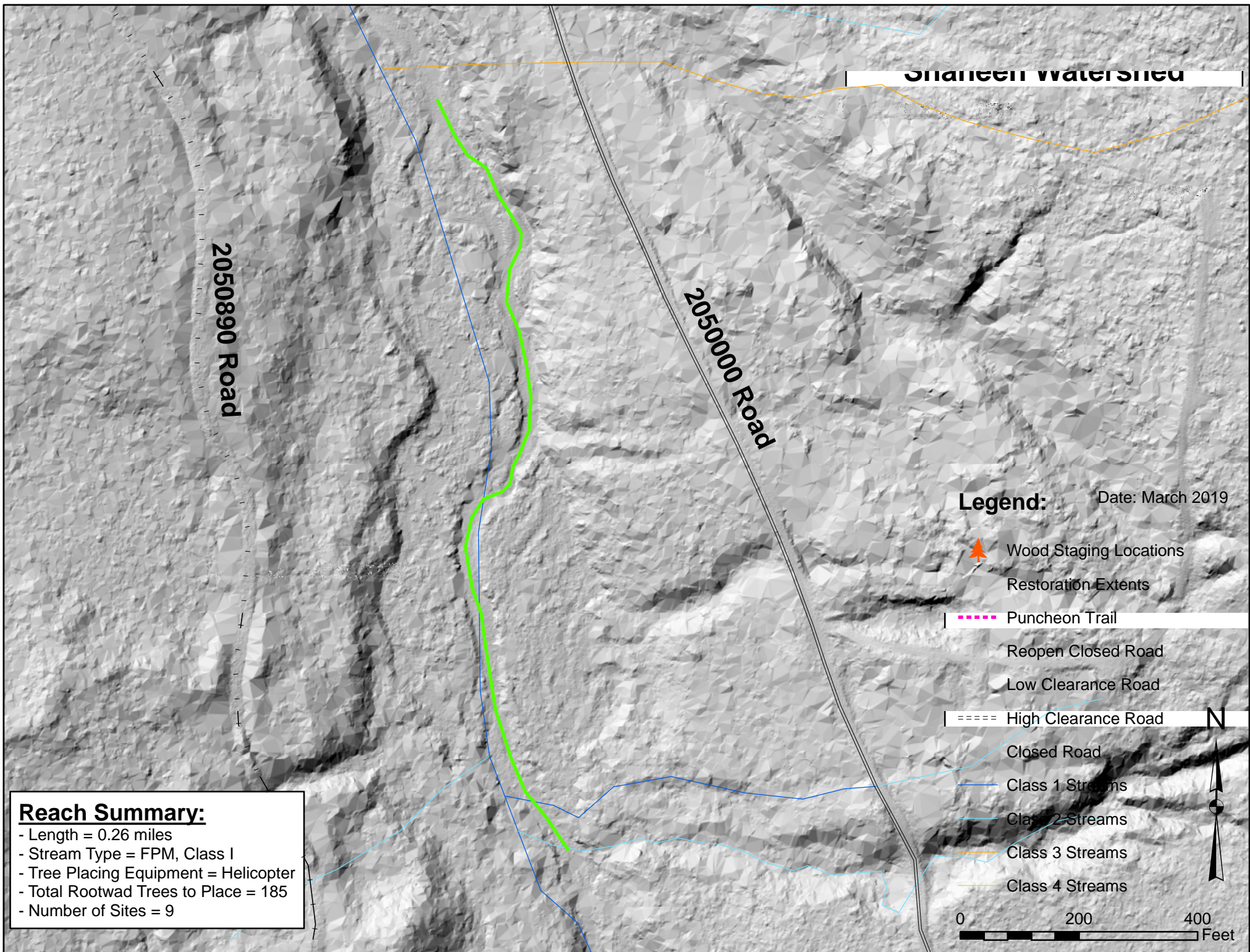


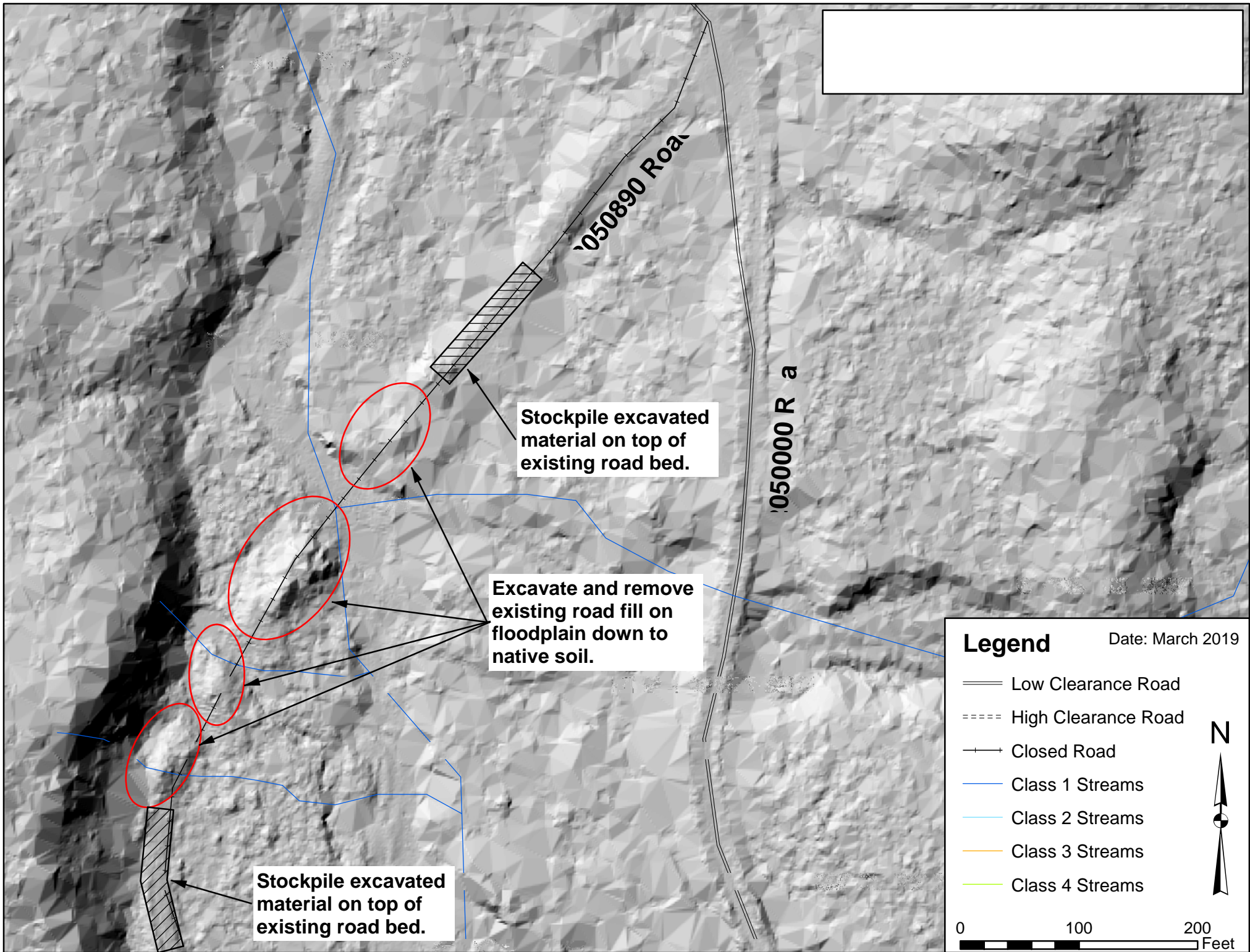
# Shaheen Watershed Stream Restoration Reach Location Map













# Reach MS3 Shaheen Watershed Stream Restoration Design

Bridge












2051000 Road

## Reach Summary:

- Length = 0.32 miles
- Stream Type = FPL, Class I
- Tree Placing Equipment = Excavator
- Total Rootwad Trees to Place = 300
- Total Old-Growth Trees to Tip = 2
- Number of Sites = 10

## Legend:

Date: March 2019

-  Wood Staging Locations
-  Restoration Extents
-  Puncheon Trail
-  Reopen Closed Road
-  Low Clearance Road
-  High Clearance Road
-  Closed Road
-  Class 1 Streams
-  Class 2 Streams
-  Class 3 Streams
-  Class 4 Streams

0 200 400 Feet

N





# Reaches MS4 and SF4 Shaheen Watershed Stream Restoration Design

## Legend:

Date: March 2019


 Wood Staging Locations


 Restoration Extents


 Puncheon Trail


 Reopen Closed Road

 Low Clearance Road

 High Clearance Road

 Closed Road

 Class 1 Streams

 Class 2 Streams

 Class 3 Streams

 Class 4 Streams

0 200 400 Feet



2051000 Road

Reach SF4

Reach MS4

Reach MS3

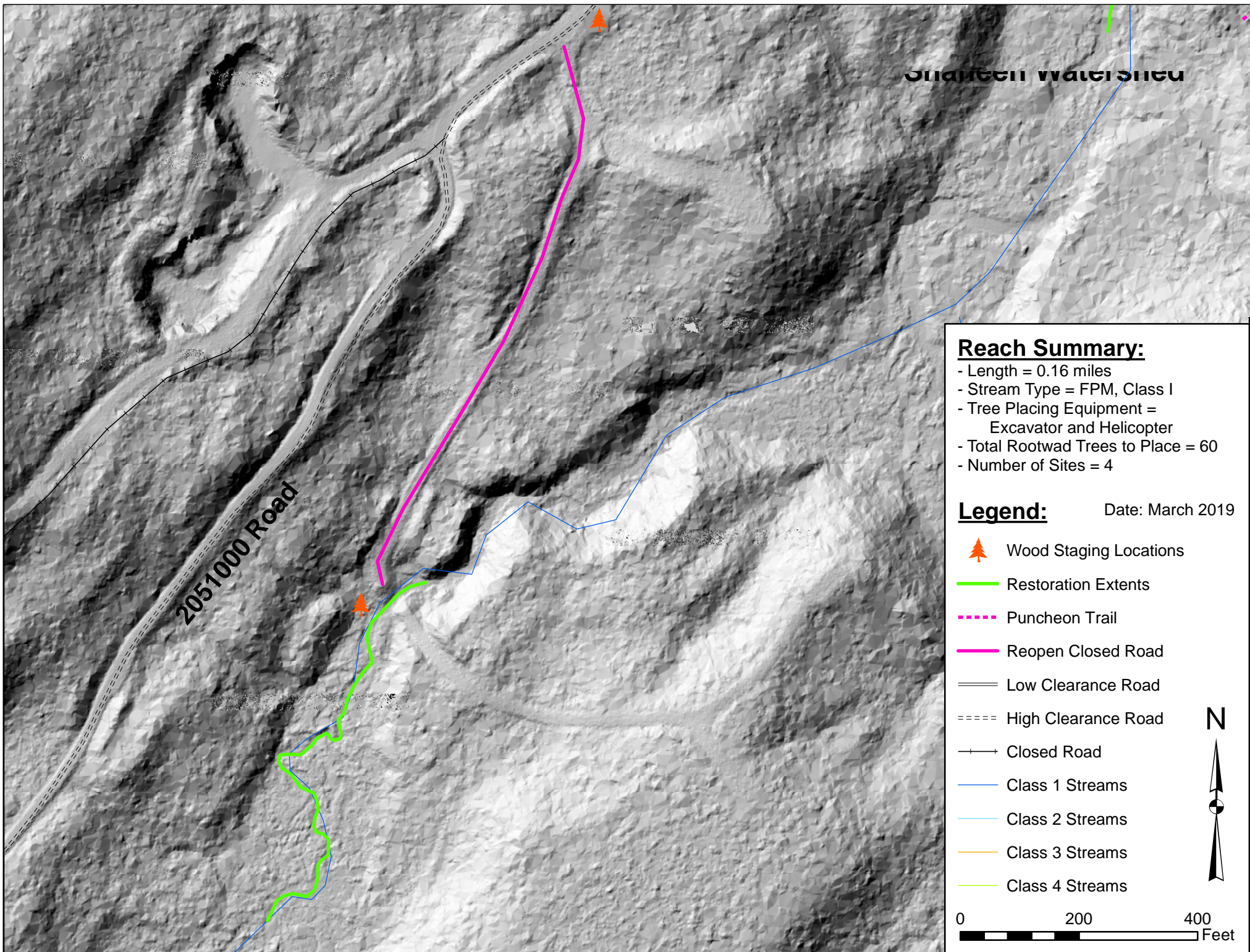
## SF4 Reach Summary:

- Length = 0.27 miles
- Stream Type = FPM, Class I
- Tree Placing Equipment = Excavator
- Total Rootwad Trees to Place = 65
- Number of Sites = 12

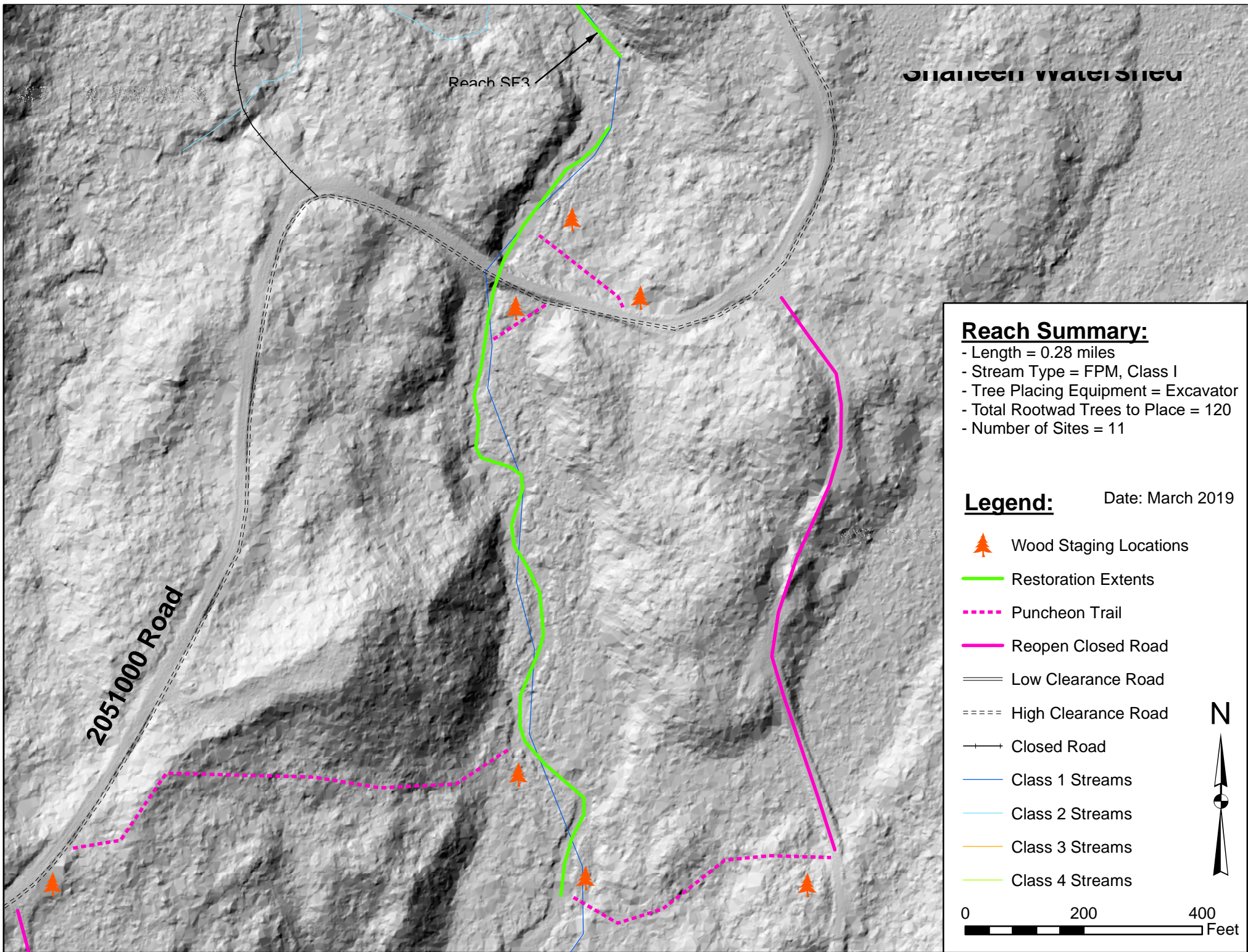
## MS4 Reach Summary:

- Length = 0.22 miles
- Stream Type = FPL, Class I
- Tree Placing Equipment = Excavator
- Total Rootwad Trees to Place = 220
- Total Old-Growth Trees to Tip = 1
- Number of Sites = 10

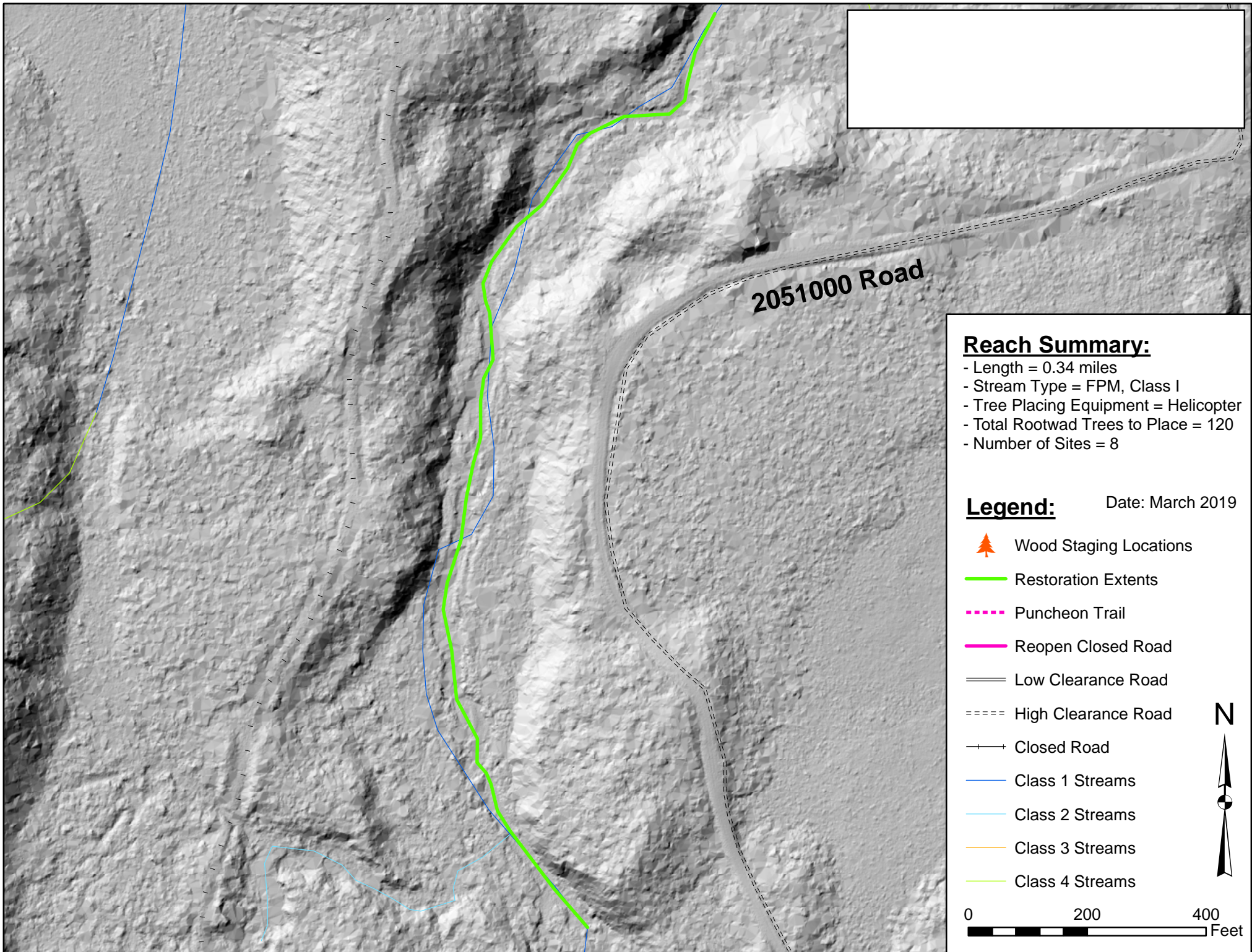






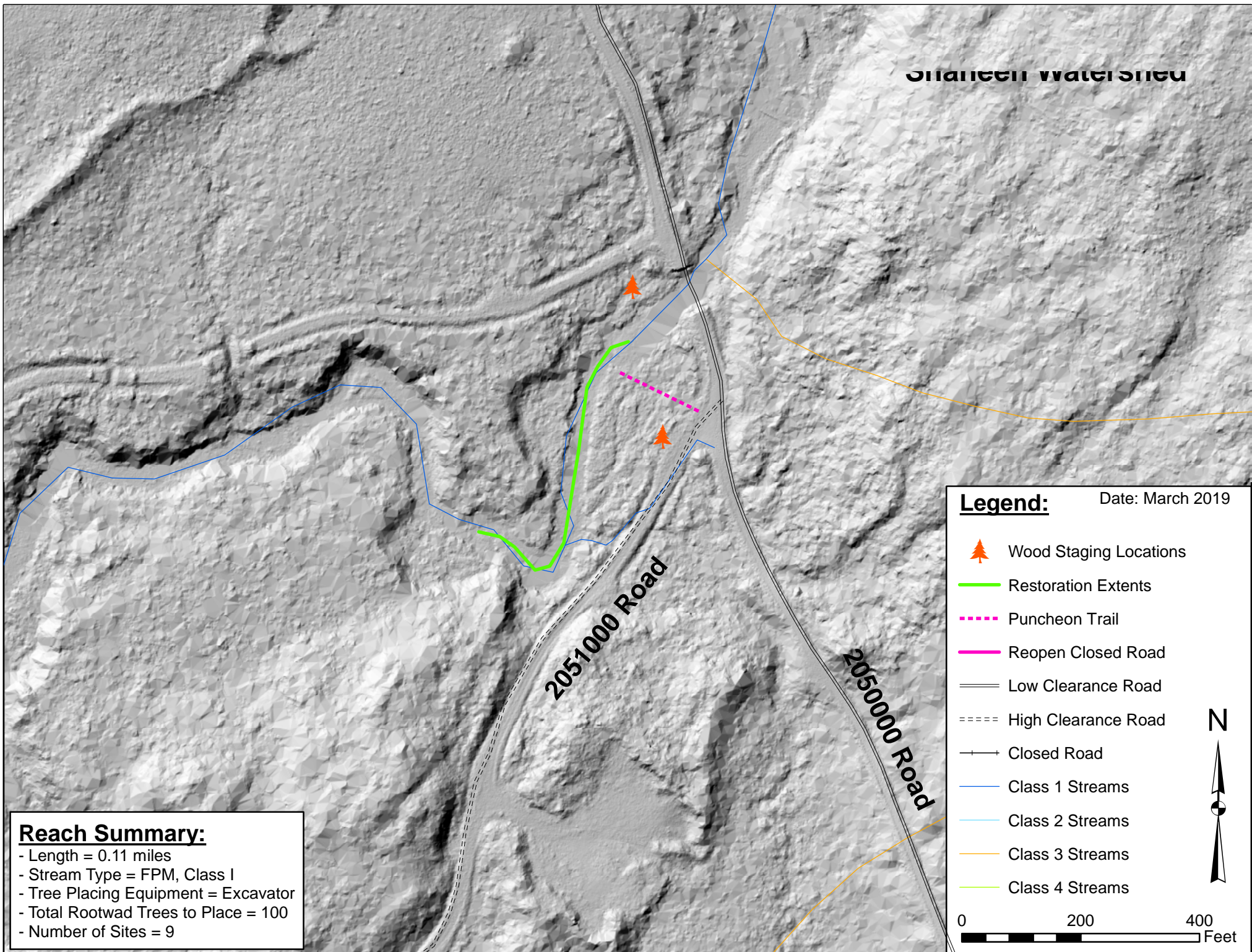








## SHATEEN WATERSHED



### Reach Summary:

- Length = 0.11 miles
- Stream Type = FPM, Class I
- Tree Placing Equipment = Excavator
- Total Rootwad Trees to Place = 100
- Number of Sites = 9



