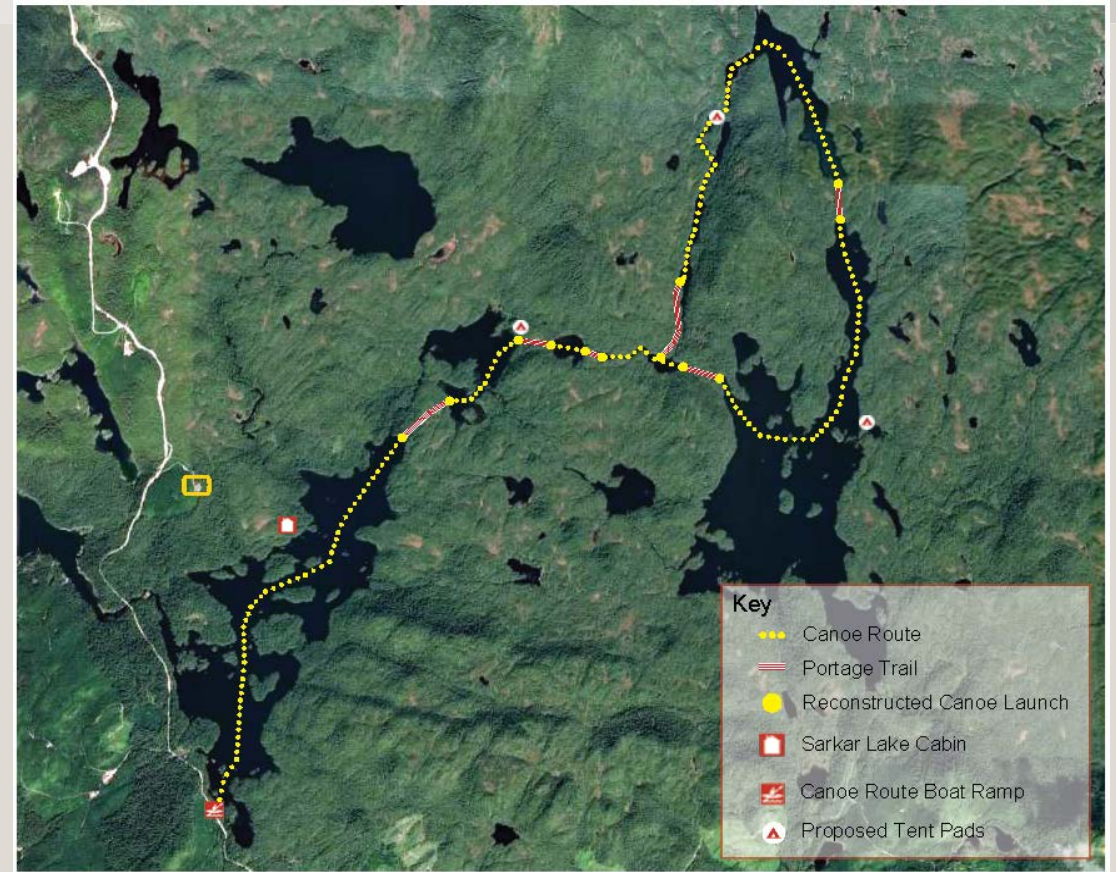


PRINCE OF WALES RECREATION PLANS

YEAR 2022 AND BEYOND

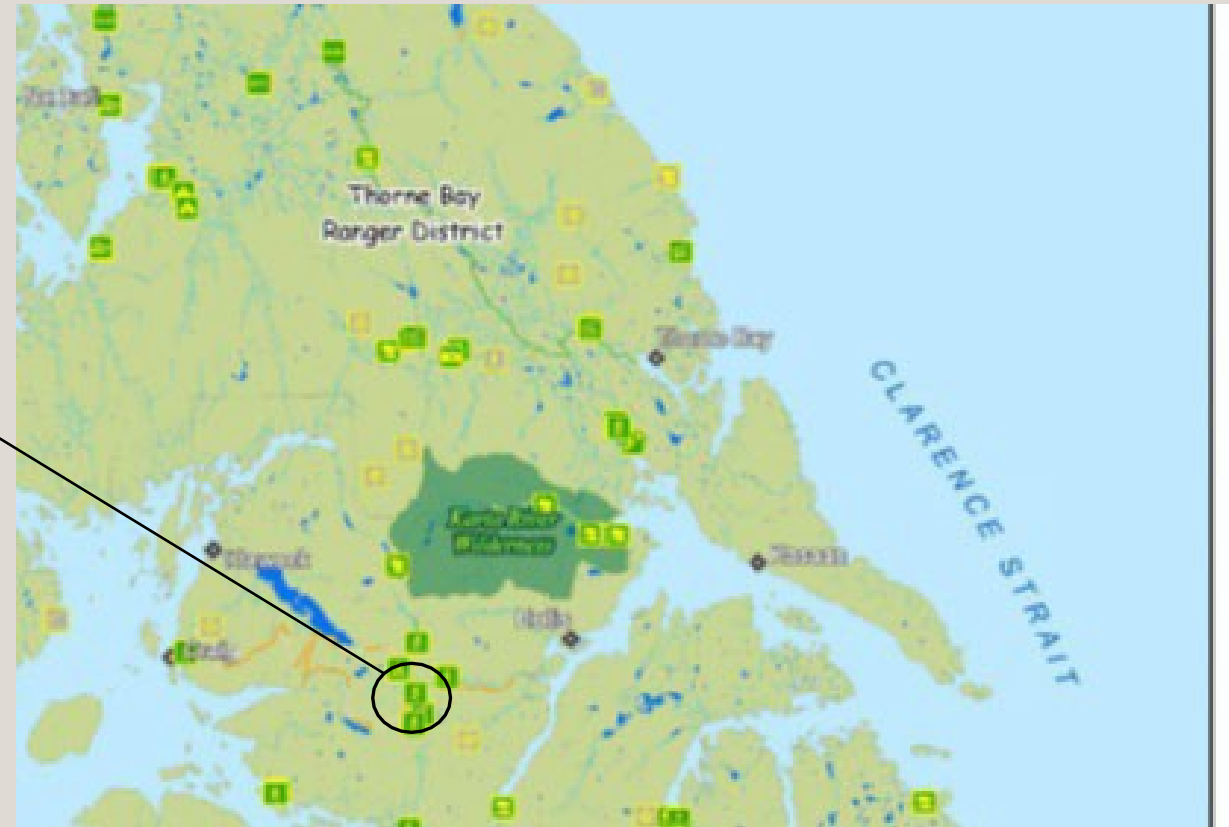
SARKAR CANOE ROUTE ENHANCEMENTS

- Creating user friendly launches
- Installing seine netting onto boardwalk
- Cabin maintenance



HARRIS RIVER CAMPGROUND AND PICNIC SITE IMPROVEMENTS

- Replace or modify leaking vault toilets
- Resurface road and campsites
- Replace picnic tables

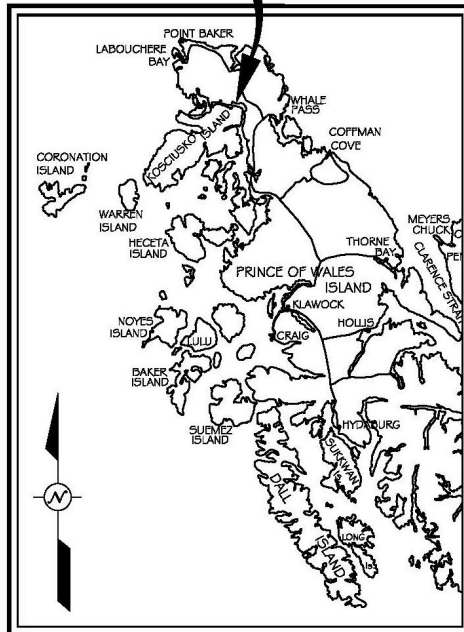


EL CAPITAN RECREATION AREA IMPROVEMENTS

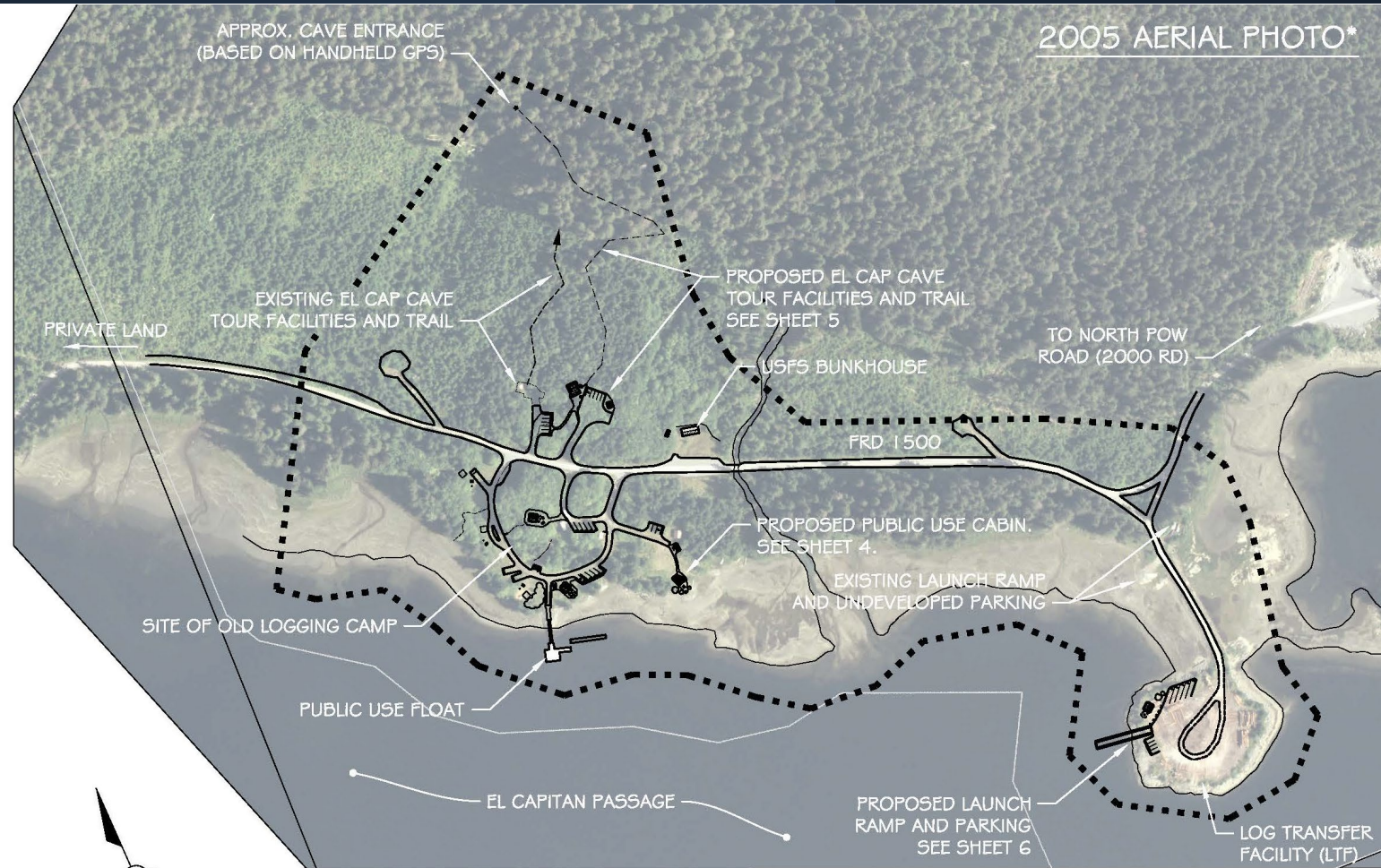
2021

Planning & Design

PROJECT
LOCATION



VICINITY MAP

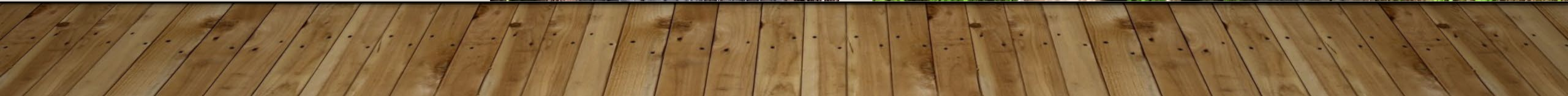


2005 AERIAL PHOTO*

*NOTE: BUILDINGS SHOWN IN PHOTO NEAR PROPOSED CABIN AND CAMPING LOOP ROAD NO LONGER EXIST.

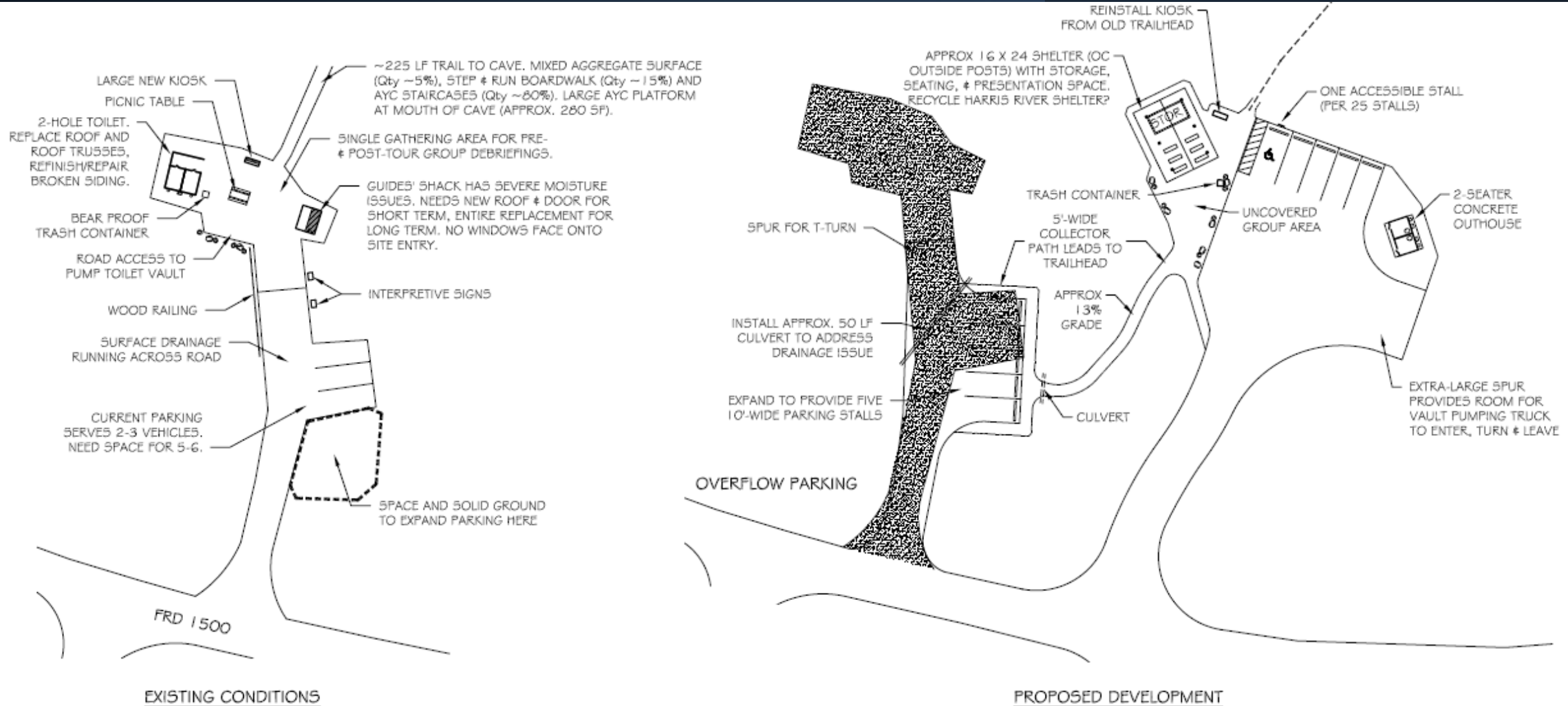
EL CAPITAN REC AREA IMPROVEMENTS

2022 - Construct new trail and trailhead to cave. Admin Cabin improvements



EL CAPITAN RECREATION AREA IMPROVEMENTS

2022 - Construct new trail and trailhead to cave. Admin Cabin improvements



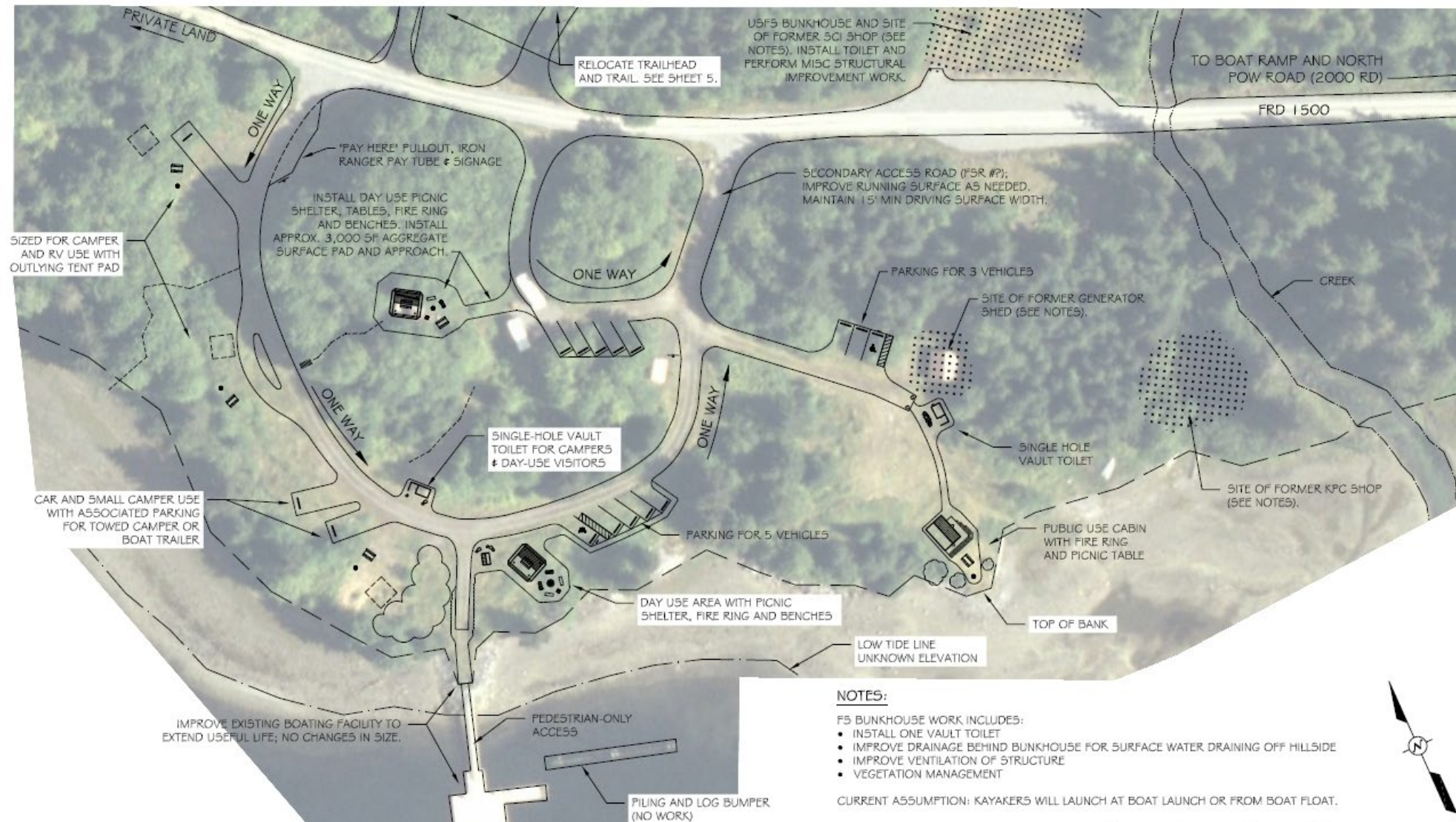
EL CAPITAN REC AREA IMPROVEMENTS

2024 Campground improvements and cabin construction



EL CAPITAN RECREATION AREA IMPROVEMENTS

2024 Campground
improvements & Cabin
Construction



SUNNAHAE TRAIL RECONSTRUCTION



SUNNAHAE TRAIL RECONSTRUCTION



- 2021 – Planning and design Phase IV
- 2022 – Resurface 4,300' of existing trail and rerouting and reconstructing from 2.0 mile post to final rest area.



SUNNAHAE TRAIL RECONSTRUCTION

View from the end the new of the Trail



One Duck Trail and Shelter

- This project will address deferred trail maintenance, including tread work and stabilizing areas with erosion.
- The trail will also be extended 300 feet to new shelter location.
- The new shelter will be higher and drier and on a more sustainable foundation.



One Duck Trail and Shelter

- The Harbor Mountain Shelter on the Sitka Ranger District. The new One Duck Shelter will be based off this design.



Winter Sports Improvements

- Community members have expressed interest in committing personal time and equipment to improve and develop infrastructure that will support access and safety related to snow-machine and other over-the-snow uses
- The proposed trail improvements include trail brushing, route relocation, road repair and route pioneering.
- The goal of the improvements is to make it easier for less experienced users to access the backcountry and build confidence, while making a safer experience for all users.
- Easier access will expand this user group and promote the Island's economy during winter when other recreation activities are limited

Seven of the traditional over-the-snow use areas are proposed for various improvements.

- Polk Inlet/West Ridge
- Barron Mountain
- Black Bear
- Control Lake/Summit
- One Duck
- North Thorne
- Trumpeter

Prince of Wales Over-the-Snow Primary Use Areas



FUTURE PROJECTS

- Karta River Wilderness Area
 - Trail and Cabin Deferred Maintenance
- Neck Lake Enhancement
 - Vault toilet, pavilion, improved launch
- Twelve Mile Arm Cabin vault toilet
- Beaver Falls Trail and Viewing Deck reconstruction
- Deweyville Trail Construction
- Honker Divide Canoe Route enhancements
- Staney Creek Cabin deferred maintenance
- Decommission Josephine Lake Cabin
- Hollis to Harris Trail Construction
- Buoy Maintenance