



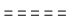





NATHANIA CREEK

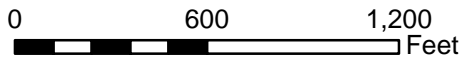
30 Road

3000580 Road

Legend:

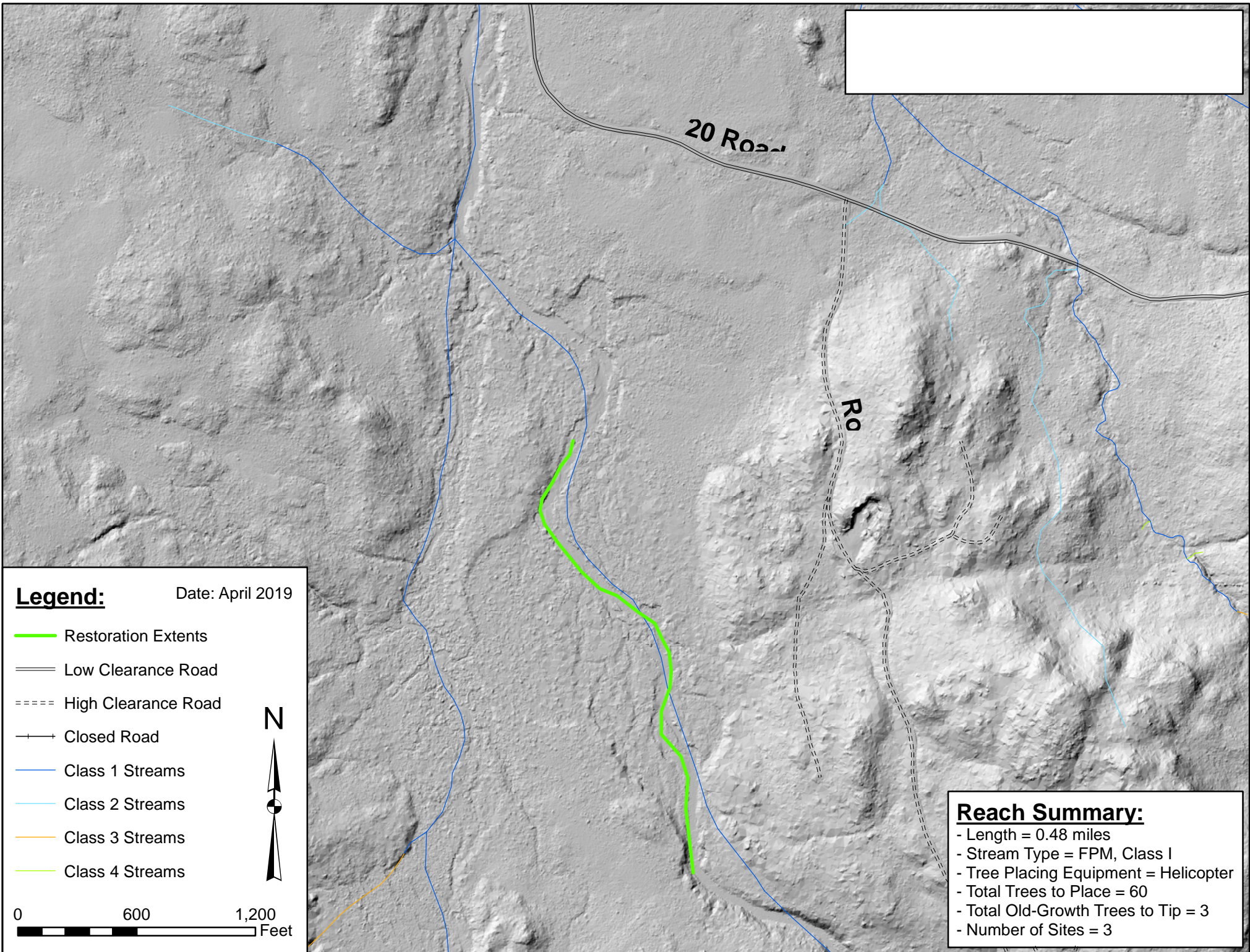
Date: April 2019

-  Restoration Extents
-  Low Clearance Road
-  High Clearance Road
-  Closed Road
-  Class 1 Streams
-  Class 2 Streams
-  Class 3 Streams
-  Class 4 Streams





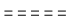
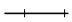




Reach Summary:

- Length = 0.39 miles
- Stream Type = FPM, Class I
- Tree Placing Equipment =
Excavator and Helicopter
- Total Trees to Place = 100
- Number of Sites = 5



Legend:

Date: April 2019

-  Restoration Extents
-  Low Clearance Road
-  High Clearance Road
-  Closed Road
-  Class 1 Streams
-  Class 2 Streams
-  Class 3 Streams
-  Class 4 Streams

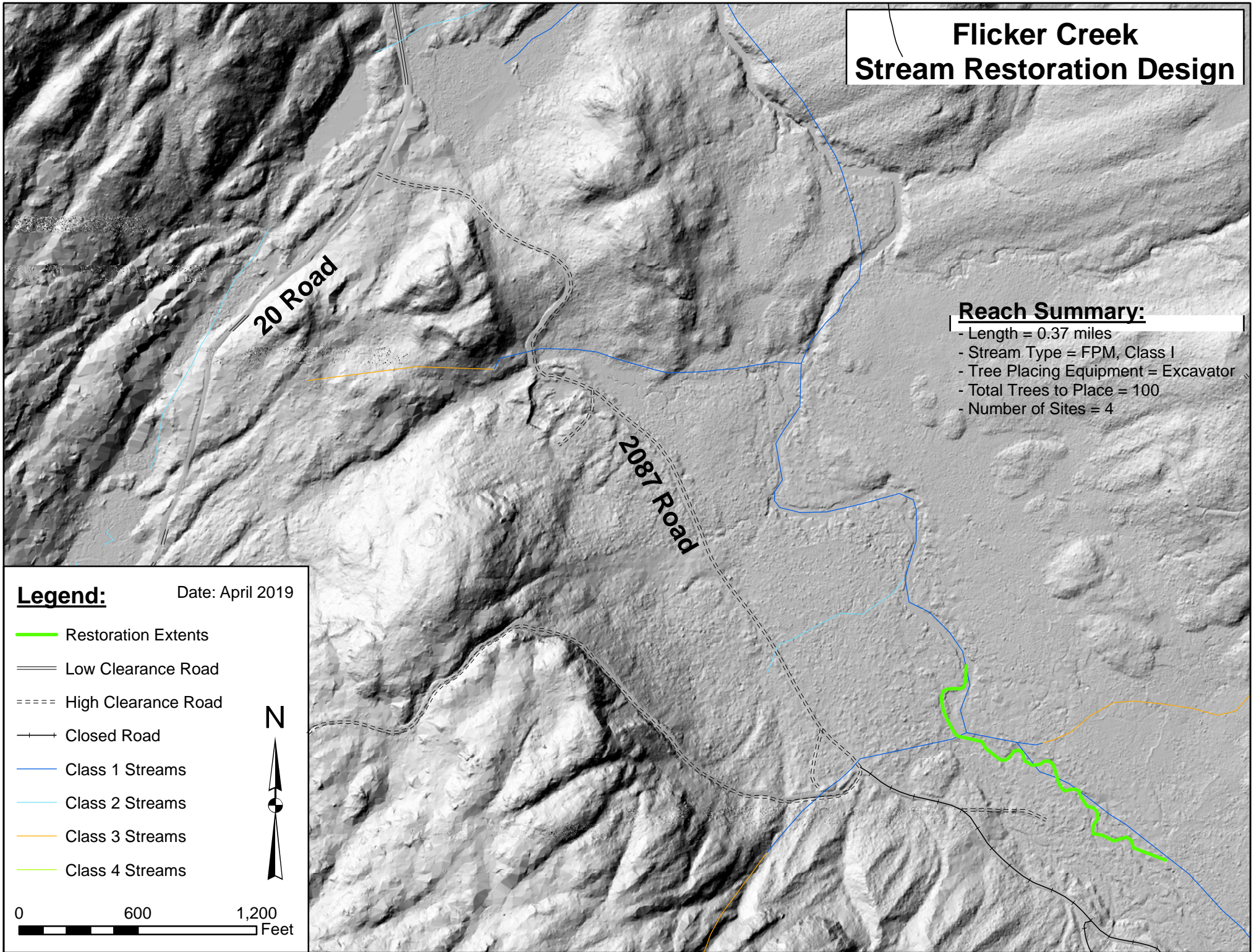


0 600 1,200 Feet

Reach Summary:

- Length = 0.48 miles
- Stream Type = FPM, Class I
- Tree Placing Equipment = Helicopter
- Total Trees to Place = 60
- Total Old-Growth Trees to Tip = 3
- Number of Sites = 3

Flicker Creek Stream Restoration Design



Reach Summary:

- Length = 0.37 miles
- Stream Type = FPM, Class I
- Tree Placing Equipment = Excavator
- Total Trees to Place = 100
- Number of Sites = 4

Legend:

Date: April 2019

- Restoration Extents
- == Low Clearance Road
- ==== High Clearance Road
- + Closed Road
- Class 1 Streams
- Class 2 Streams
- Class 3 Streams
- Class 4 Streams



0 600 1,200 Feet