

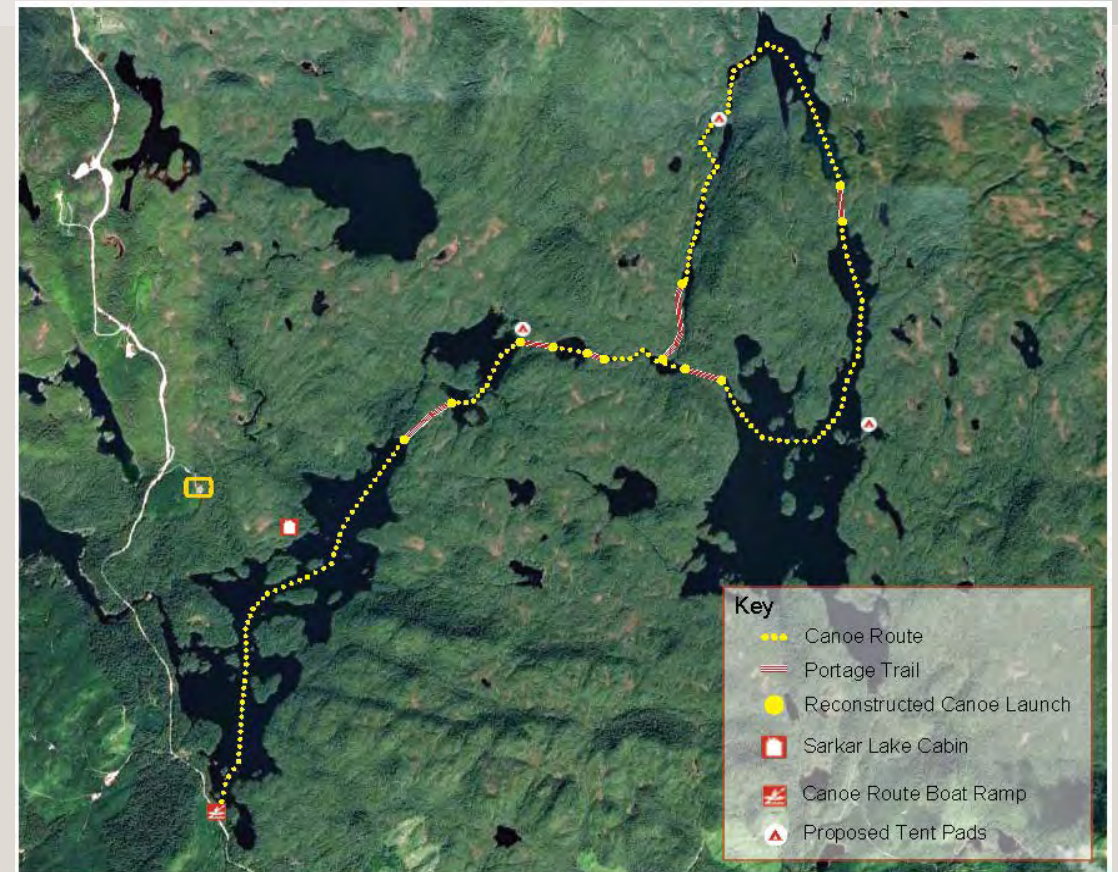
# PRINCE OF WALES RECREATION PLANS

---

YEAR 2023 AND BEYOND

# SARKAR CANOE ROUTE ENHANCEMENTS

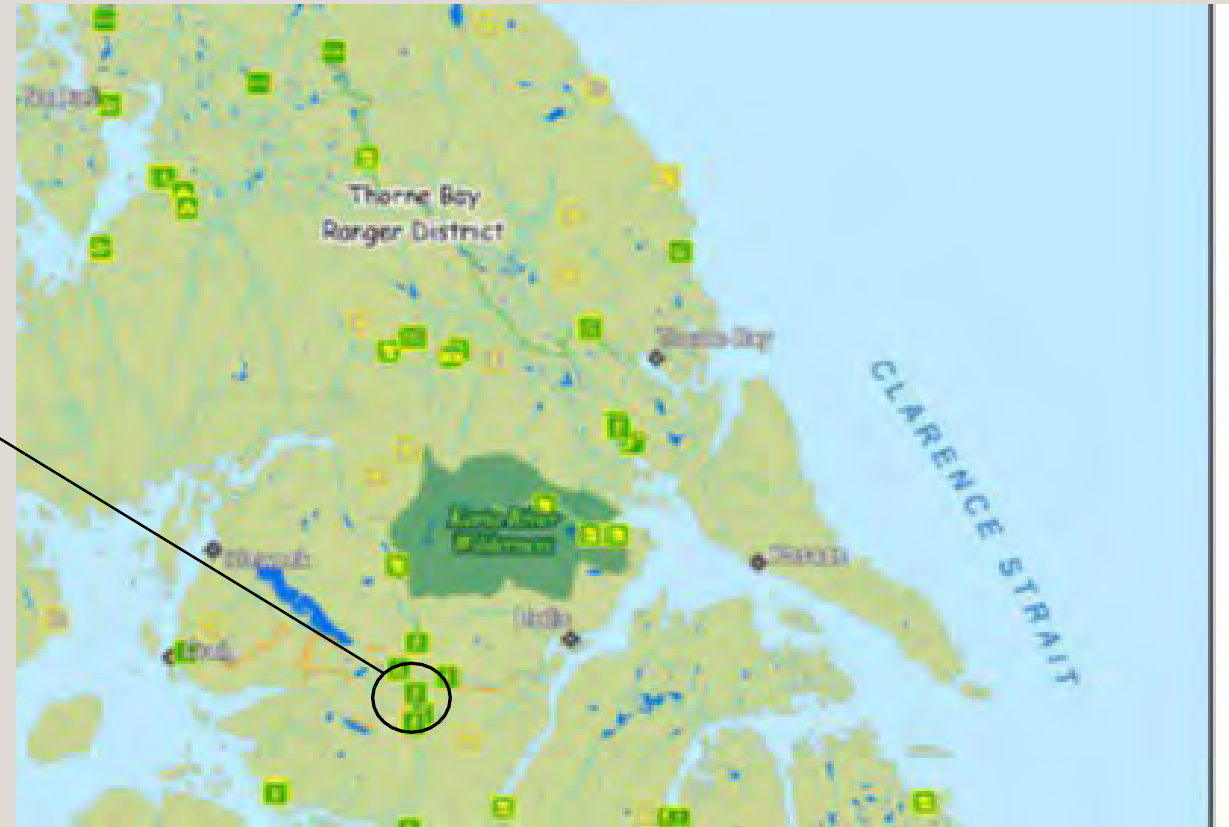
- Creating user friendly launches
- Installing seine netting onto boardwalk
- Cabin maintenance



# HARRIS RIVER CAMPGROUND AND PICNIC SITE IMPROVEMENTS

---

- Replace or modify leaking vault toilets
- Resurface road and campsites
- Replace picnic tables
- Replace deteriorating BBQ stands or pits



# EL CAPITAN RECREATION AREA IMPROVEMENTS

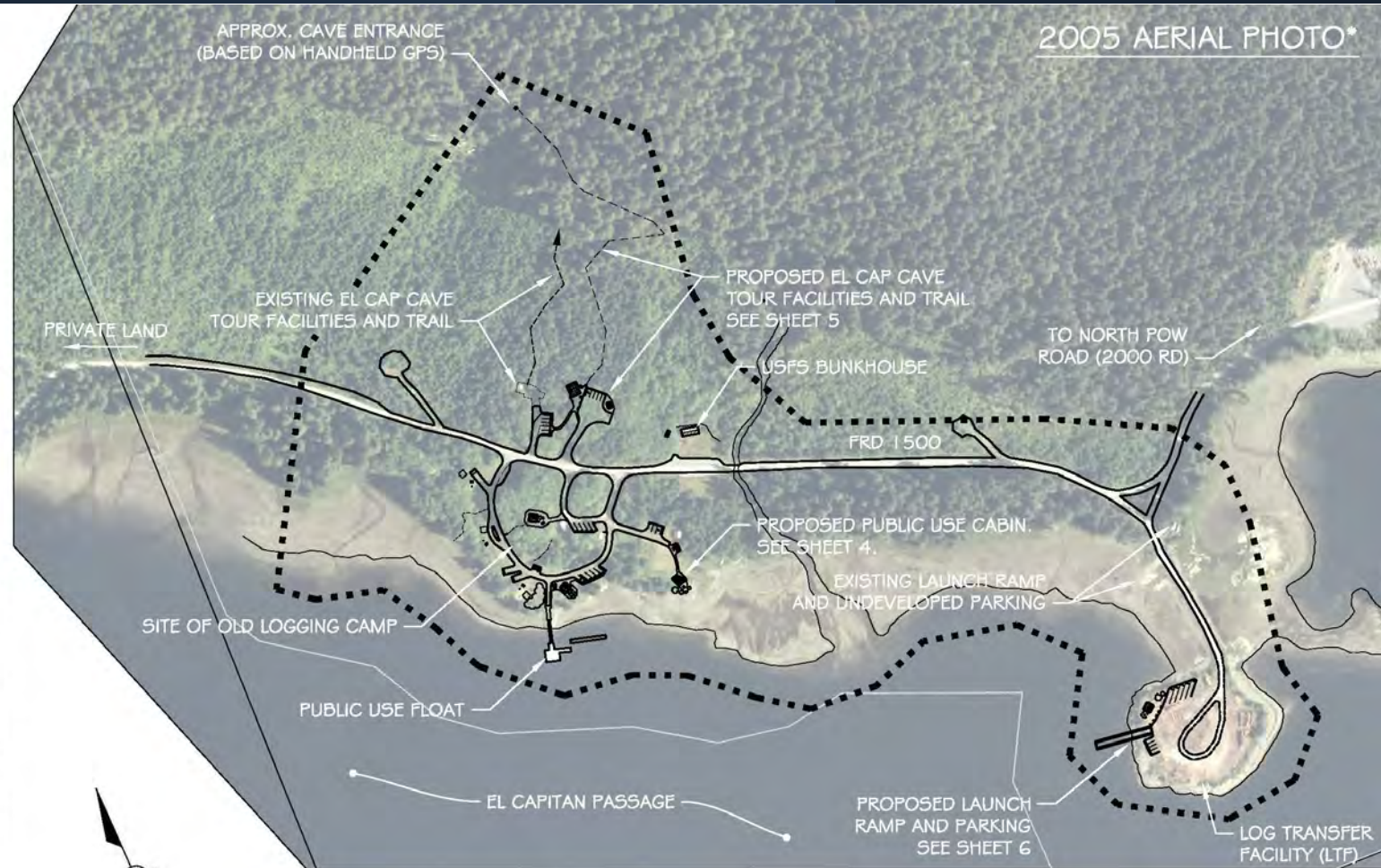
2021

Planning & Design

PROJECT  
LOCATION



VICINITY MAP

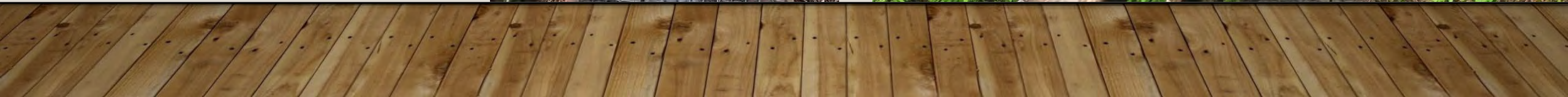


**\*NOTE:** BUILDINGS SHOWN IN PHOTO NEAR PROPOSED CABIN AND CAMPING LOOP ROAD NO LONGER EXIST.

# EL CAPITAN REC AREA IMPROVEMENTS

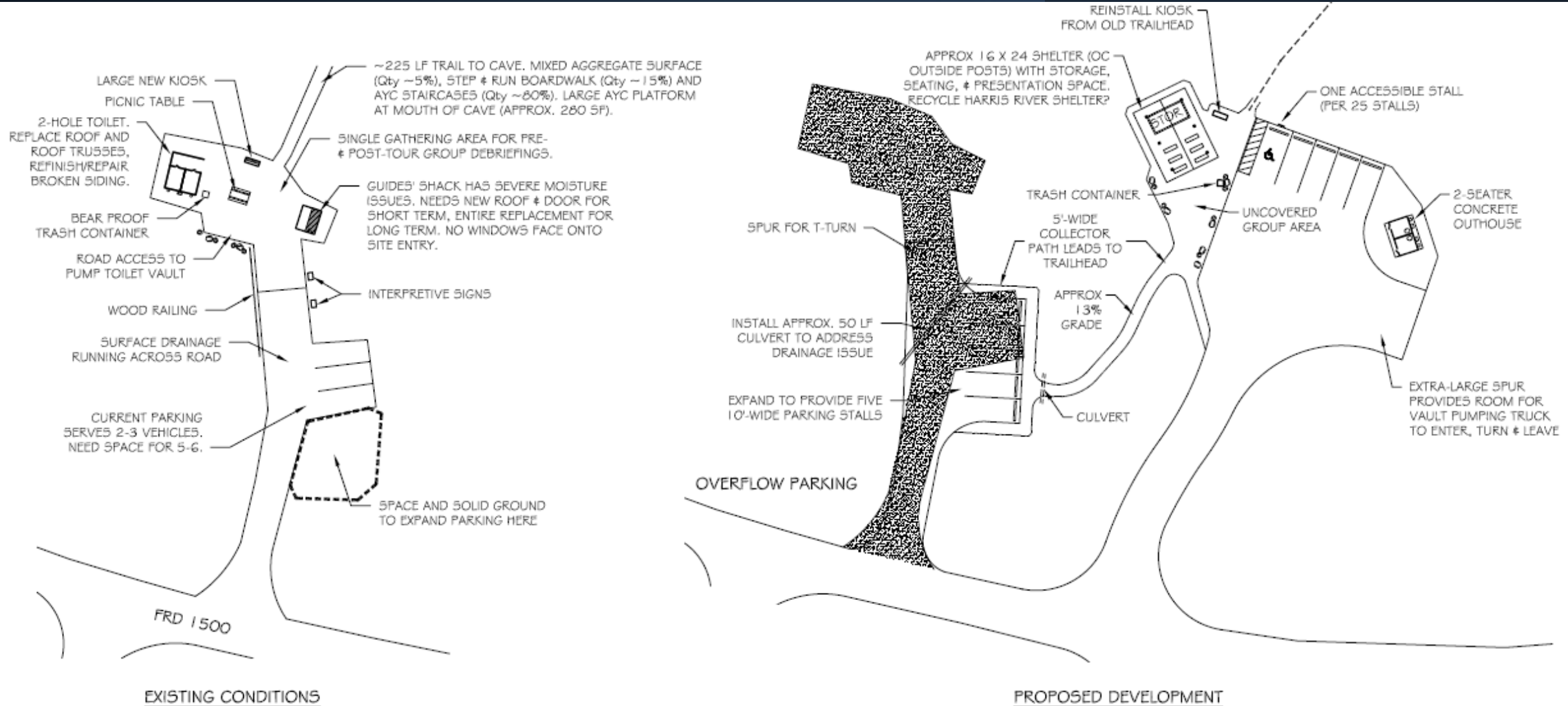
2023 - Construct new trail and trailhead to cave. Admin Cabin improvements

---



# EL CAPITAN RECREATION AREA IMPROVEMENTS

2023 - Construct new trail and trailhead to cave. Admin Cabin improvements

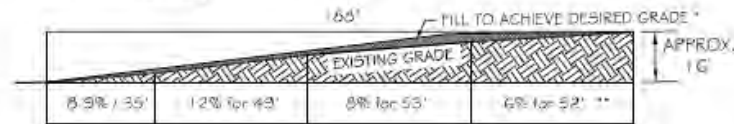


# EL CAPITAN REC AREA IMPROVEMENTS

## 2024 Boat launch improvements

### BOAT LAUNCH DESIGN CONSIDERATIONS

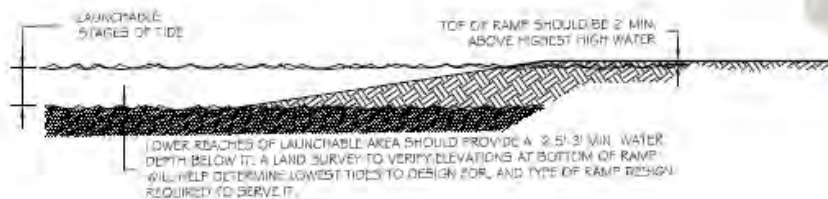
#### EXISTING GRADE:



\* IDEAL SLOPE FOR BOAT LAUNCH: 2% / 5%. THIS SITE WILL REQUIRE FILL OVER EXISTING SLOPE TO ACHIEVE THESE GRADES. SIMILAR USFS PROJECT: SEAL POINT BOAT RAMP NEAR KAKE, AK, BUILT 2013.

\*\* GUNN SHOTS TAKEN BY L. KEMP AND L. WILD AT APPROX. +1.7 FOOT LOW TIDE

#### UPPER & LOWER LIMITS OF TIDE:



PER EL CAP LTP ZONE/ENTR PLAT (Mean tides verified at <https://tidesandcurrents.noaa.gov/tides/>):

MEAN LOW WATER (MLW): 1.39'

MEAN LOWER LOW WATER (MLLW): 0.00'

MEAN HIGH WATER (MHW): +10.34'

EXTREME HIGH WATER (ASSUMED TO BE HIGHEST HIGH WATER + STORM SURGE): +11.51'

NOTE: TOP OF RAMP AND PARKING AREA ARE ABOVE +15' ELEV.

PER 2018 TIDE TABLES ([www.tides.net/tideinfo270/](http://www.tides.net/tideinfo270/)):

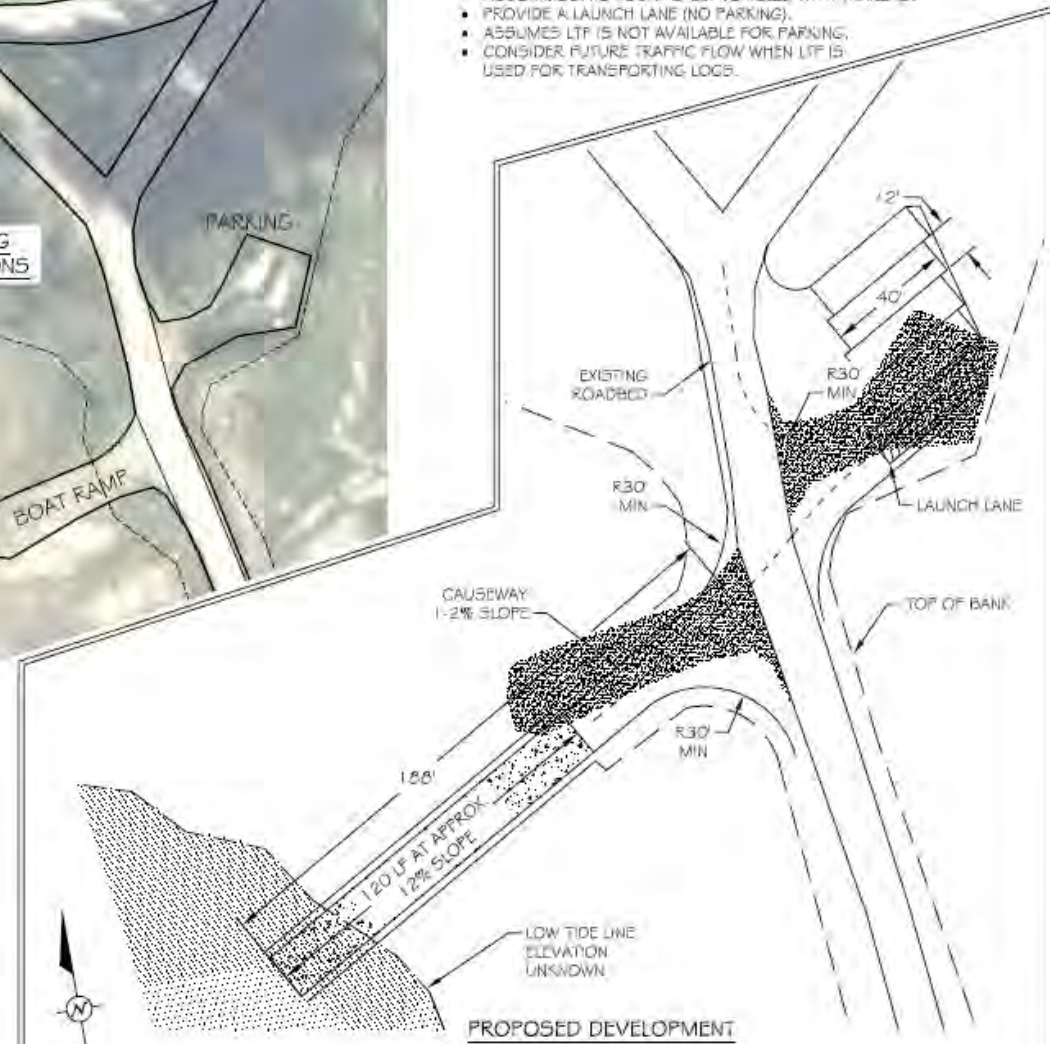
HIGHEST HIGH WATER OF 2018: MONDAY, JANUARY 1st, 11:26AM: +13.43'

LOWEST LOW WATER OF 2018: FRIDAY, JUNE 15th, 9:51AM: -3.21FT



#### NOTES:

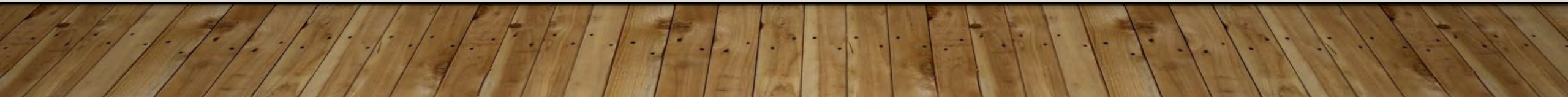
- ACCOMMODATE FOUR TO SIX VEHICLES WITH TRAILERS.
- PROVIDE A LAUNCH LANE (NO PARKING).
- ASSUMES LTP IS NOT AVAILABLE FOR PARKING.
- CONSIDER FUTURE TRAFFIC FLOW WHEN LTP IS USED FOR TRANSPORTING LOGS.



# EL CAPITAN REC AREA IMPROVEMENTS

2025 Campground improvements and cabin construction

---

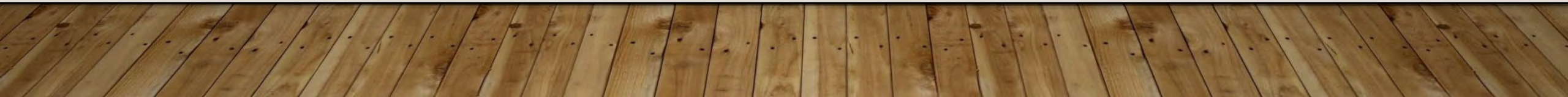
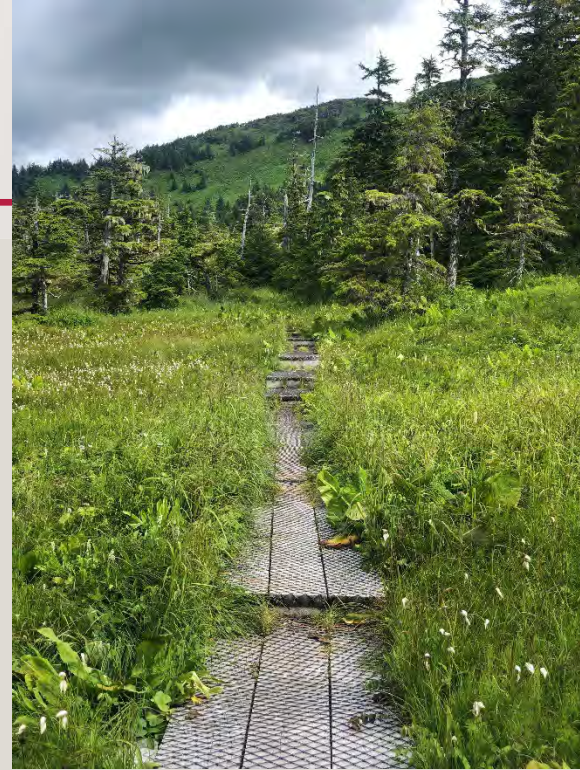


# EL CAPITAN RECREATION AREA IMPROVEMENTS

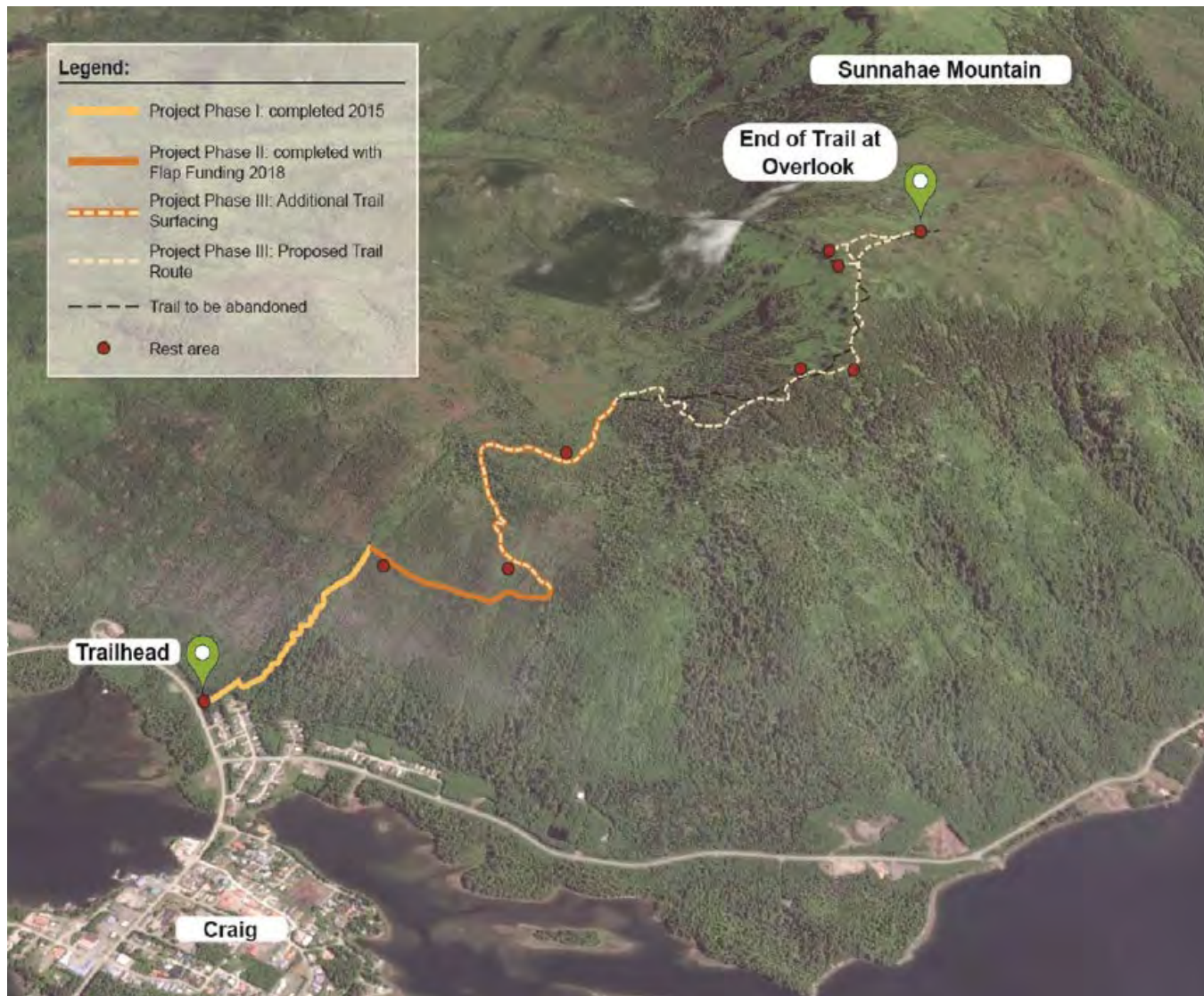
2025 Campground  
improvements & Cabin  
Construction



# SUNNAHAE TRAIL RECONSTRUCTION



# SUNNAHAE TRAIL RECONSTRUCTION



- 2022 – Planning and design Phase IV
- 2023 – Resurface 4,300' of existing trail and rerouting and reconstructing from 2.0 mile post to final rest area.



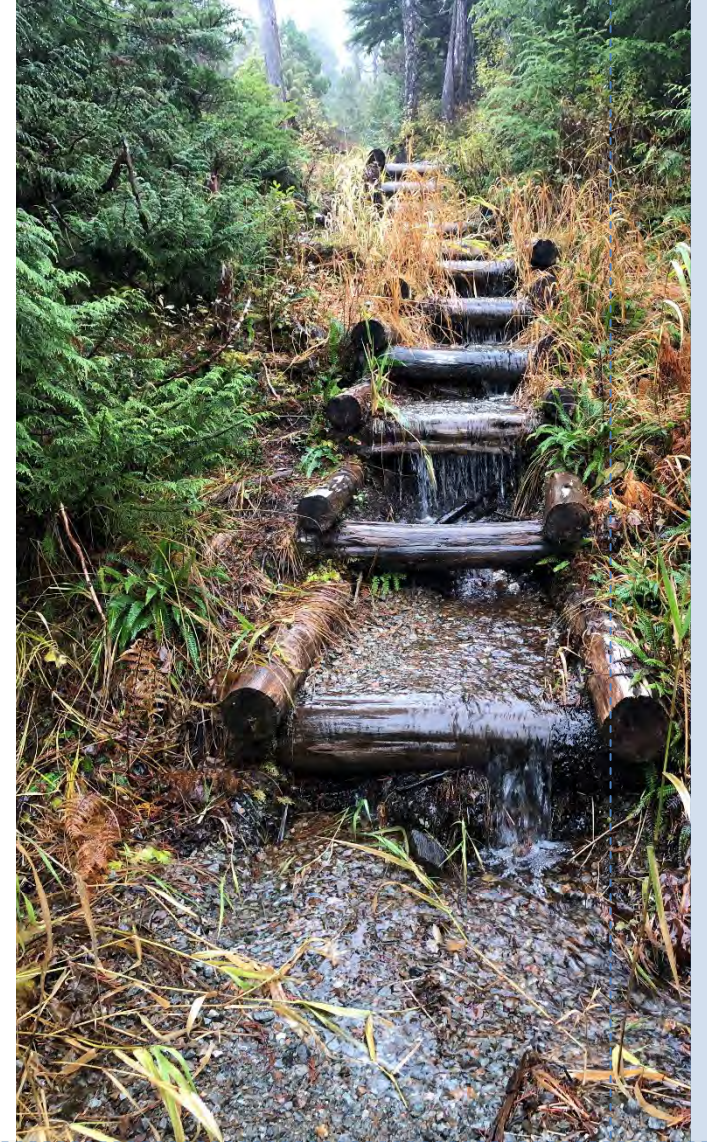
# SUNNAHAE TRAIL RECONSTRUCTION

View from the end the new of the Trail



# One Duck Trail

- This project will address deferred trail maintenance, including tread work and stabilizing areas with erosion.
- The trail will also be extended 300 feet



# Winter Sports Improvements

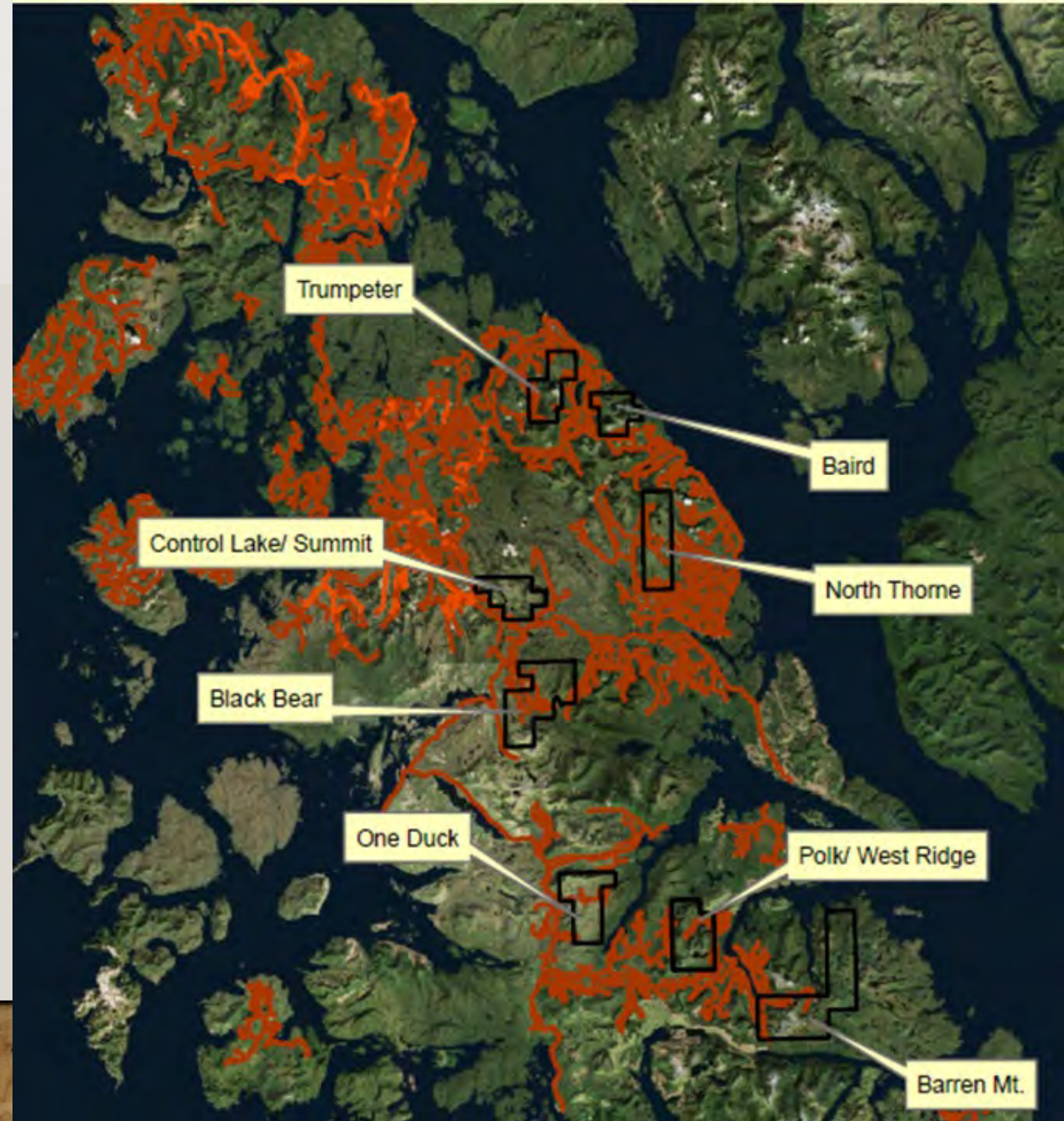
---

- Community members have expressed interest in committing personal time and equipment to improve and develop infrastructure that will support access and safety related to snow-machine and other over-the-snow uses
- The proposed trail improvements include trail brushing, route relocation, road repair and route pioneering.

Seven of the traditional over-the-snow use areas are proposed for various improvements.

- Polk Inlet/West Ridge
- Barron Mountain
- Black Bear
- Control Lake/Summit
- One Duck
- North Thorne
- Trumpeter

Prince of Wales Over-the-Snow Primary Use Areas



# FUTURE PROJECTS

---

- Karta River Wilderness Area
  - Trail and Cabin Deferred Maintenance
- Twelve Mile Arm Cabin vault toilet
- Beaver Falls Trail and Viewing Deck reconstruction
- Foundation Repair for Salmon Bay Cabin
- Deweyville Trail Construction
- Honker Divide Canoe Route enhancements
- Staney Creek Cabin deferred maintenance
- Decommission Josephine Lake Cabin
- Roof Repair for Keegan Cove Cabin