



Stream Restoration

Large Wood Addition Projects
Prince of Wales Island

Malcolm Cross, Hydrologist

POW LLA Public Workshop (virtual)
May 08, 2023

Previous POW LLA public meetings:

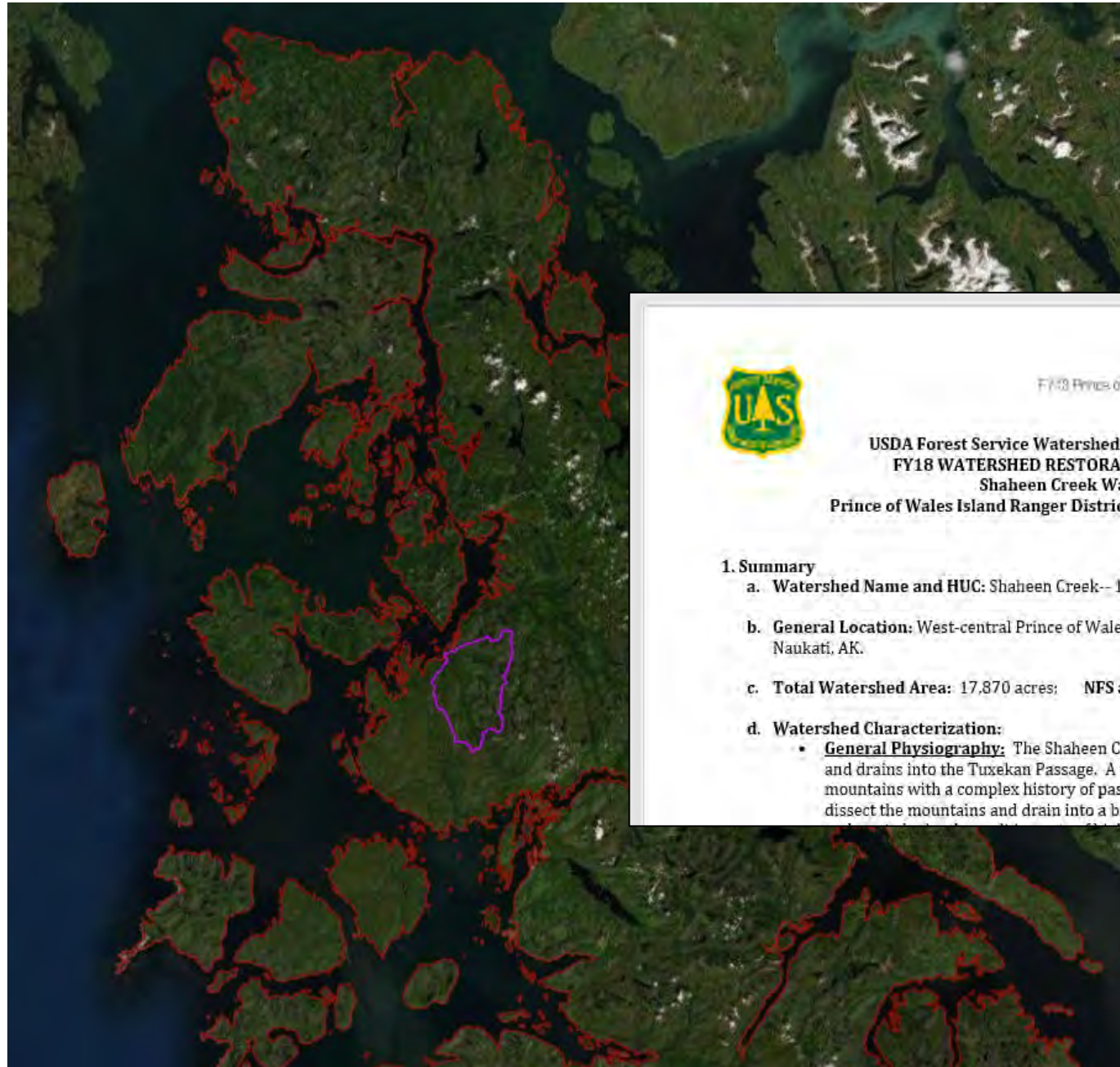
- Large Woody Debris
- Determining restoration needs
 - Watershed Condition Framework
 - Priority Watersheds
- 2022 field season accomplishments

Today:

- 2023 (and beyond) Projects
 - Shaheen Creek, Continued



Shaheen Creek Watershed



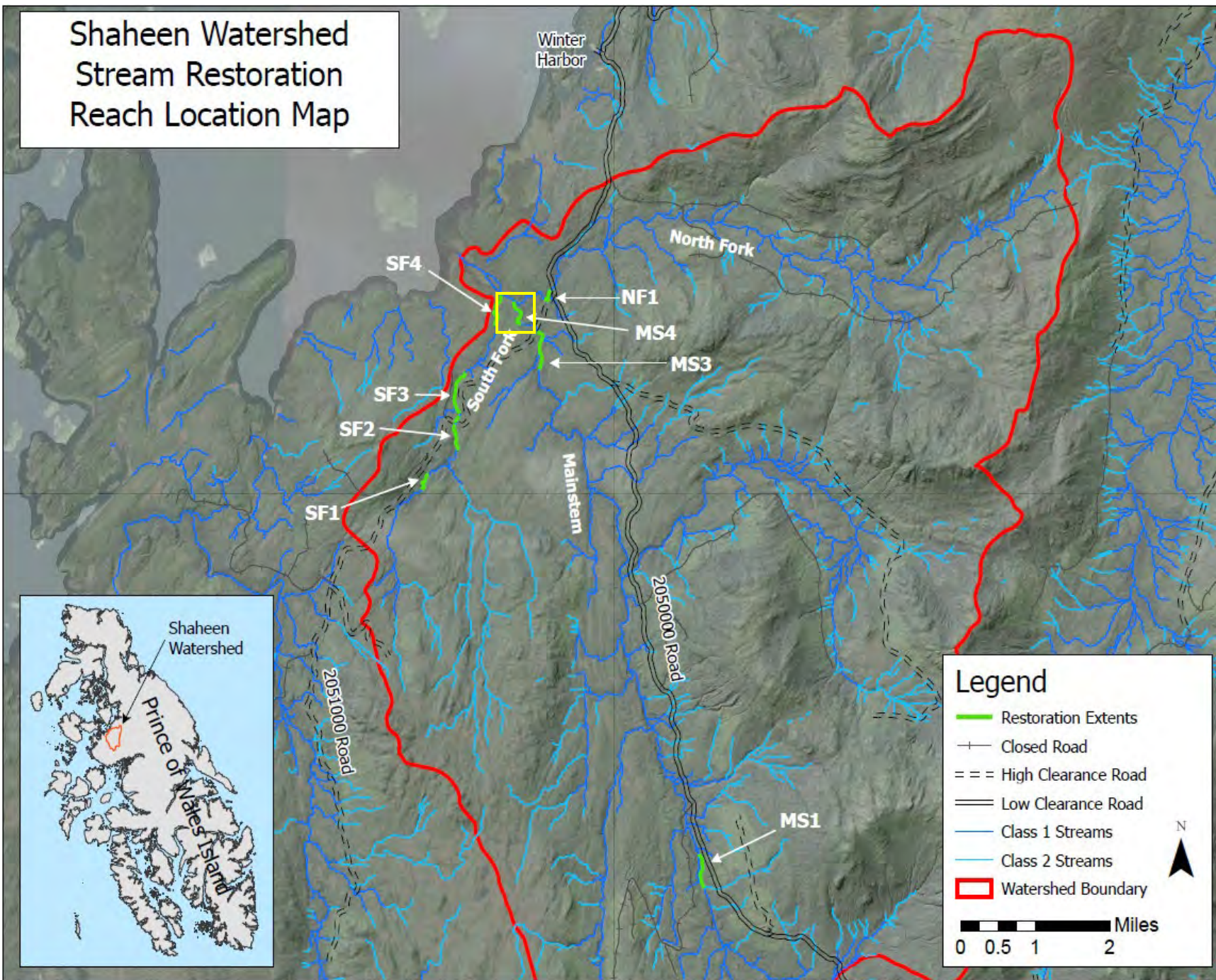
Shaheen Creek Watershed Restoration Action Plan
FY18 Prince of Wales Island Ranger Districts, Tongass National Forest

USDA Forest Service Watershed Condition Framework FY18 WATERSHED RESTORATION ACTION PLAN Shaheen Creek Watershed Prince of Wales Island Ranger Districts, Tongass National Forest

1. Summary

- a. **Watershed Name and HUC:** Shaheen Creek-- 190101031005
- b. **General Location:** West-central Prince of Wales Island, approximately 11 miles south of Naukati, AK.
- c. **Total Watershed Area:** 17,870 acres; **NFS area within watershed:** 100%
- d. **Watershed Characterization:**
 - **General Physiography:** The Shaheen Creek watershed covers over 28 square miles and drains into the Tuxekan Passage. A volcanic terrain consists of rugged mountains with a complex history of past glaciation. Many small and steep valleys dissect the mountains and drain into a broad valley and lowlands. Areas of

Shaheen Watershed Stream Restoration Reach Location Map



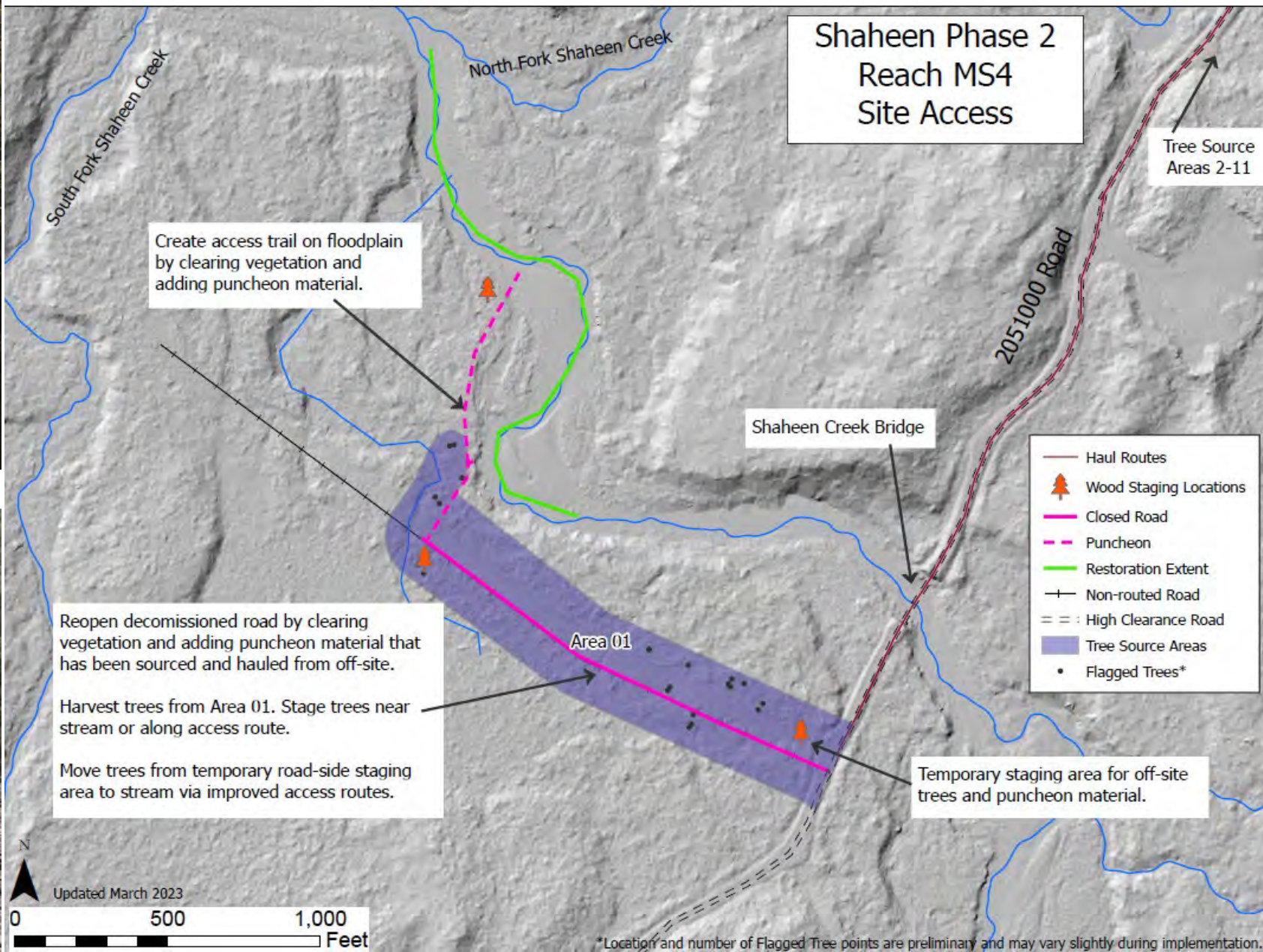
Phase 2: MS4
Implementation Summer 2023
0.22 stream miles
~200 whole and cut trees
9 logjam sites



Legend

- Restoration Extents
- Closed Road
- High Clearance Road
- Low Clearance Road
- Class 1 Streams
- Class 2 Streams
- Watershed Boundary

Miles
0 0.5 1 2



Shaheen Reach MS4

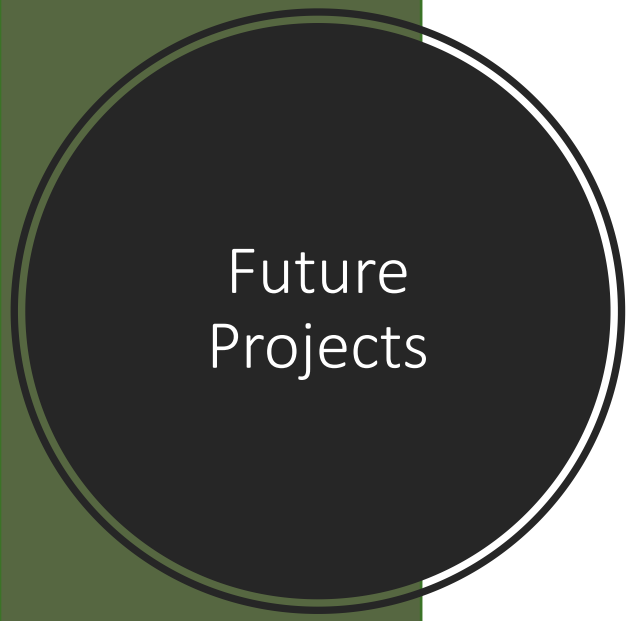
Example of site-specific design



Note: Drawings are conceptual and exact wood piece numbers and location may vary. Structures shall be constructed to at least the height of the Q100 water surface elevation.



Prince of Wales Landscape Level Analysis (POW LLA) Long-term Plan, DRAFT for Spring 2023 Workshop



Stream Restoration	Line Officer: District Ranger and Deputy Ranger	Activity Leader: Ellyn Rickels					
Activity	Description	FY 2022	FY 2023	FY 2024	FY 2025	FY 2026	FY 2027
1. Nahania Creek Restoration	Placement of large wood within and along 0.32 miles of stream. Implementation completed in FY 2021.	Post-restoration monitoring Year 1	Post-restoration monitoring Year 2	N/A	N/A	Post-restoration monitoring Year 5	N/A
2. Shaheen NF1 Restoration	Sourcing, staging, and placement of large wood within and along 0.11 miles of stream. Implementation completed in FY 2022 in partnership with NFF.	Implementation completed	Post-restoration monitoring Year 1	Post-restoration monitoring Year 2	N/A	N/A	Post-restoration monitoring Year 5
3. Shaheen SF2 US Restoration	Sourcing, staging, and placement of large wood within and along 0.21 miles of stream. Implementation completed in FY 2022 in partnership with NFF.	Implementation completed	Post-restoration monitoring Year 1	Post-restoration monitoring Year 2	N/A	N/A	Post-restoration monitoring Year 5
4. Shaheen MS4 Restoration	Sourcing, staging, and placement of large wood within and along 0.22 miles of stream. Implementation will occur in FY 2023 in partnership with NFF.	Planning	Implementation	Post-restoration monitoring Year 1	Post-restoration monitoring Year 2	N/A	N/A
5. Shaheen SF4 Restoration	Sourcing, staging, and placement of large wood within and along 0.27 miles of stream. Final designs and resource surveys needed.	N/A	Planning	Implementation	Post-restoration monitoring Year 1	Post-restoration monitoring Year 2	N/A
6. Shaheen SF2 DS Restoration	Sourcing, staging, and placement of large wood within and along 0.06 miles of stream. Final designs and resource surveys needed.	N/A	Planning	Implementation	Post-restoration monitoring Year 1	Post-restoration monitoring Year 2	N/A
7. Shaheen SF1 DS Restoration	Sourcing, staging, and placement of large wood within and along 0.05 miles of stream. Final designs and resource surveys needed.	N/A	Planning	Implementation	Post-restoration monitoring Year 1	Post-restoration monitoring Year 2	N/A
8. Shaheen MS3 Restoration	Sourcing, staging, and placement of large wood within and along 0.32 miles of stream. Final designs and resource surveys needed.	N/A	N/A	Planning	Implementation	Post-restoration monitoring Year 1	Post-restoration monitoring Year 2
9. Shaheen SF3 Restoration	Sourcing, staging, and placement of large wood within and along 0.34 miles of stream. Final designs and resource surveys needed.	N/A	N/A	Planning	Planning	Implementation	Post-restoration monitoring Year 1
10. Shaheen MS1 Restoration	Sourcing, staging, and placement of large wood within and along 0.26 miles of stream. Final designs and resource surveys needed.	N/A	N/A	Planning	Planning	Implementation	Post-restoration monitoring Year 1
11. Thorne Bay Basin Stream Restoration	Sourcing, staging, and placement of large wood via heavy machinery or with hand tools into stream reaches and along floodplains, in coordination with the TBB IRMP project. Surveys and planning are ongoing. Specific locations to be determined.	N/A	Planning	Planning	Planning	Implementation	Implementation



Thank You!

Malcolm.Cross@usda.gov

(907) 826-1609