
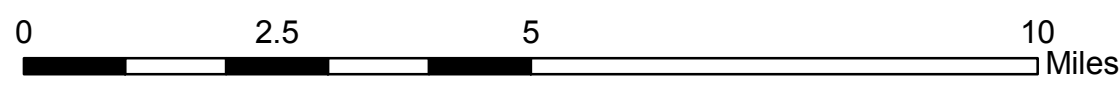


**Limited Legend**  
(See OSVUM Map Book for complete legend)

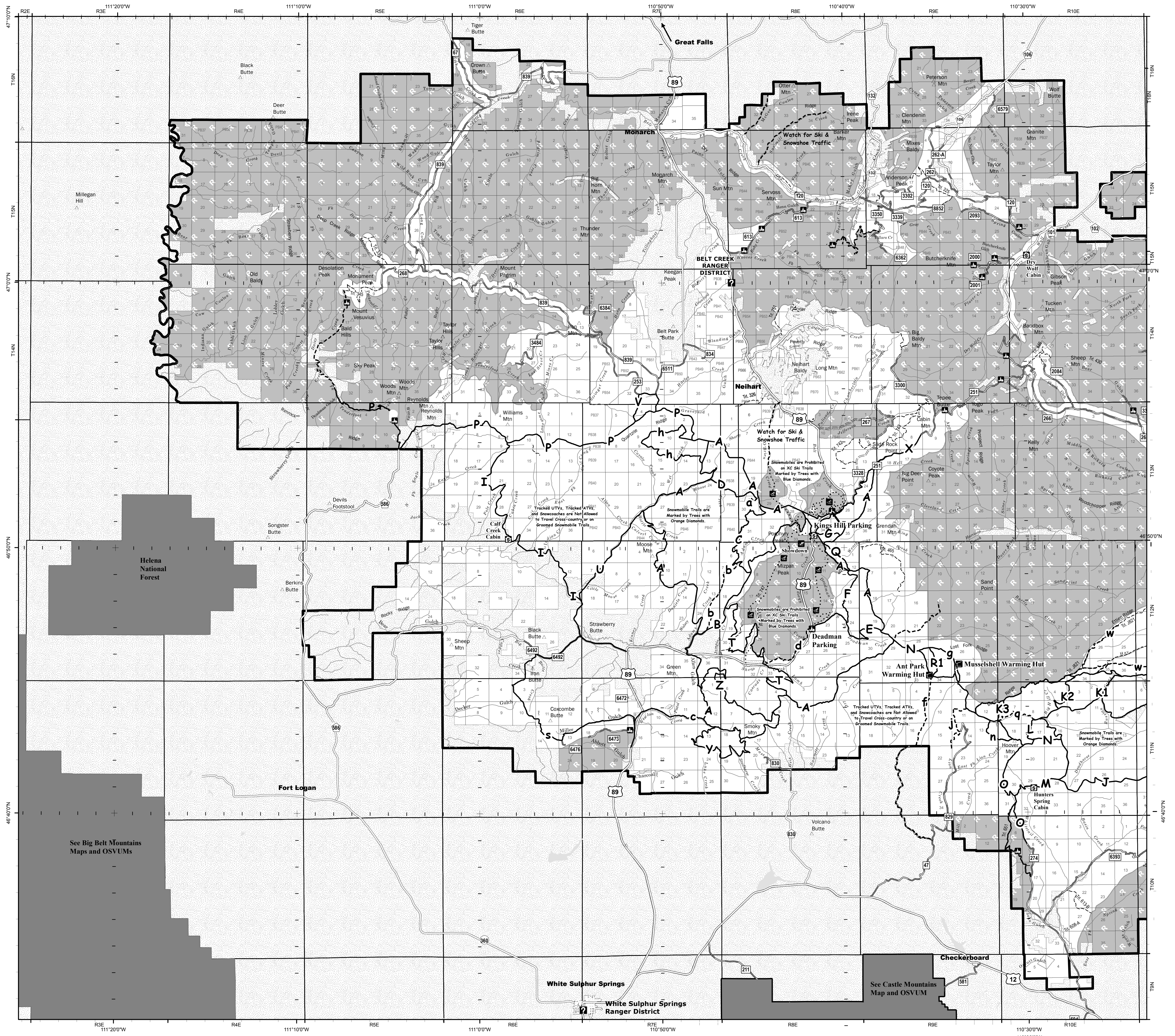
- Routes open to Snowmobiles Dec. 1 - May 15
  - Roads open to Snowmobiles Dec. 1 - May 15 Through Areas Closed to Winter Motorized Travel
  - Area Open to Cross Country Snowmobile Travel Dec. 1 - May 15
  - Area Closed to Winter Motorized Travel
  - Non Forest Service System Lands
  - For GPS Navigation Grid: 10' ticks with 1' subticks
  - Road Closed to Winter Motorized Travel Shown for navigation only
- Use this QR code to get more geopdf maps for our Forest, or use this link: <https://go.usa.gov/XCsJ>
- 



**Helena-Lewis and Clark National Forest**  
**Little Belt, Castle and Crazy Mountain**  
**Over-The-Snow Motor Vehicle Use Map**  
This map is valid Nov. 8, 2018 until updated.

**Little Belt Mountains - West Side**

**Snowmobile use, cross country and on roads and trails, is authorized only during the period Dec. 1 - May 15.**



See Big Belt Mountains Maps and OSVUMs

See Castle Mountains Map and OSVUM