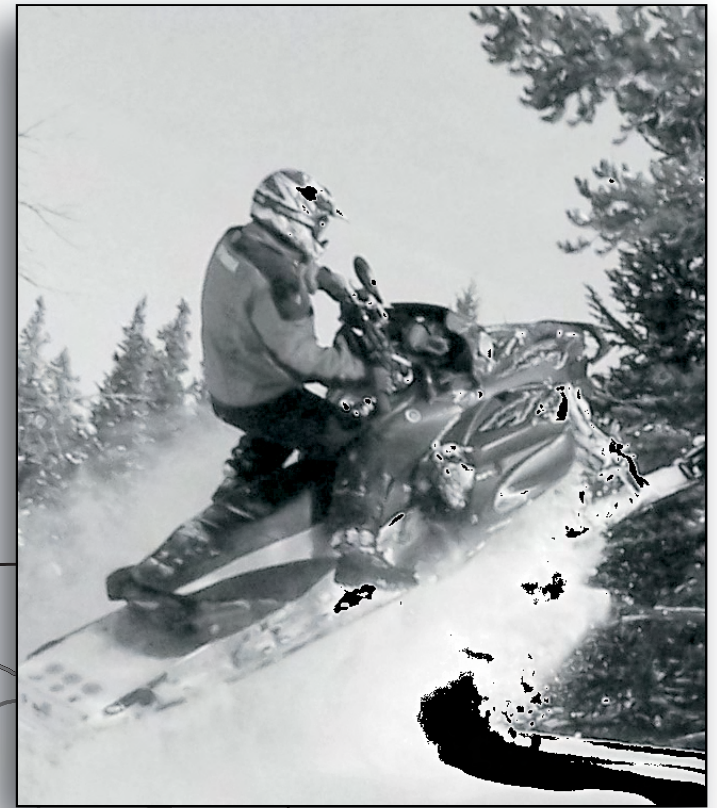
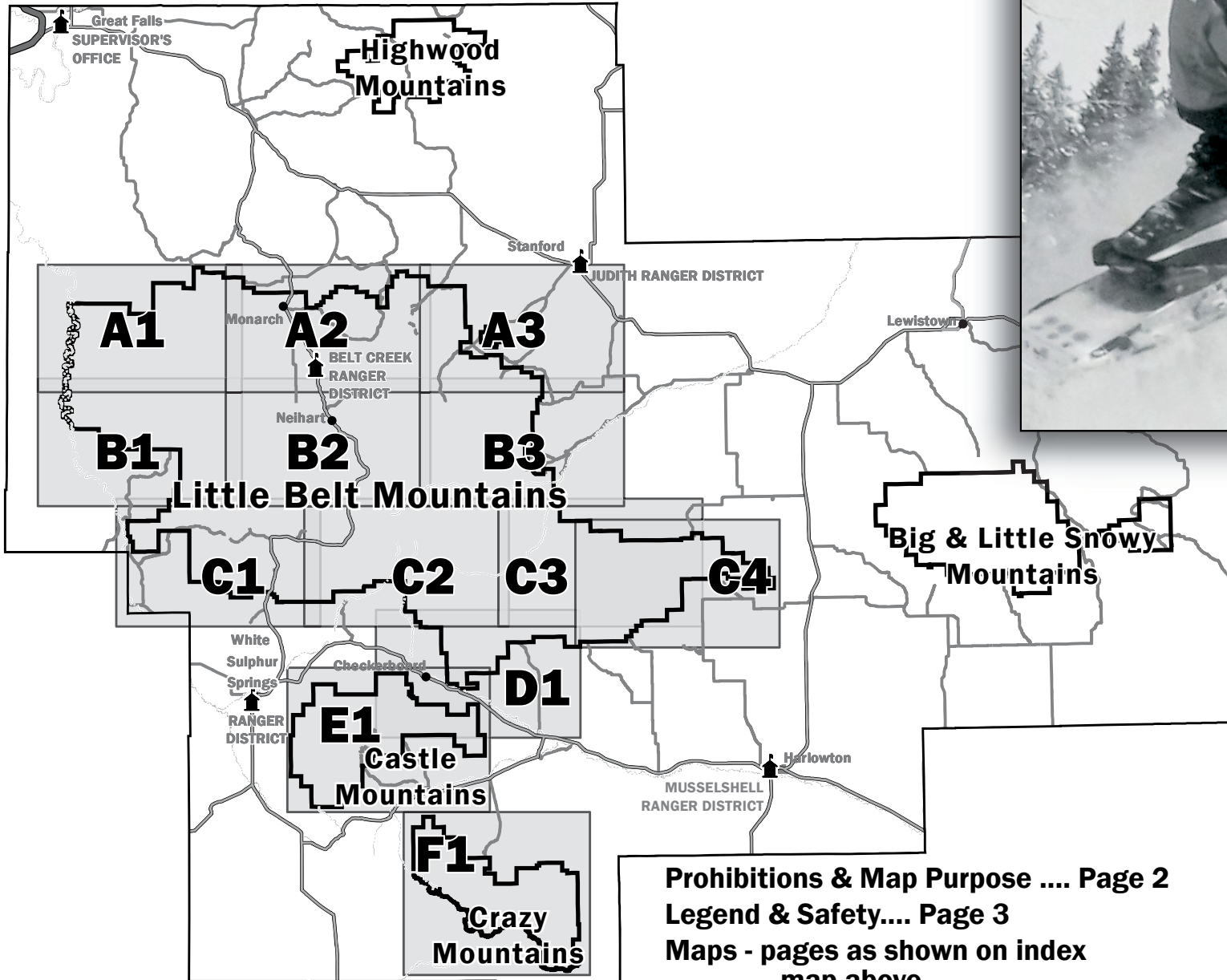




# Helena-Lewis and Clark National Forest Little Belt, Castle and Crazy Mtn Over-The-Snow Motor Vehicle Use Map

This map is valid November 8, 2018 until updated. Snowmobile use cross country, and on roads and trails, is authorized only during the period Dec. 1 - May 15.



<https://www.fs.usda.gov/hlcnf/>

### INFORMATION SOURCES

**Helena-Lewis and Clark National Forest**  
1220 38th Street N.  
Great Falls, MT 59405  
(406) 791-7700

**Judith Ranger District**  
109 Central Ave.  
Stanford, MT 59479  
(406) 566-2292

**Musselshell Ranger District**  
809 2nd Street NW  
Harlowton, MT 59036  
(406) 632-4391

**White Sulphur Spring Ranger District**  
204 W. Folsom  
White Sulphur Springs, MT 59645  
(406) 547-3361

**Belt Creek RD**  
4234 US Highway 89  
North  
Neihart, MT 59465  
(406) 236-3511

**In Emergencies**  
Contact the local sheriff's department or call 911

To report poaching, hunting or fishing violations, OHV violations, littering, theft or destruction of natural and cultural resources, and any other crimes on public land, call:

1-800-TIP-MONT



**Prohibitions & Map Purpose .... Page 2**  
**Legend & Safety.... Page 3**  
**Maps - pages as shown on index map above**

## PURPOSE AND CONTENTS OF THIS MAP

This map has a limited purpose. It shows the prohibitions and open areas for use of over-snow vehicles (snowmobiles only) on the Helena-Lewis and Clark National Forest in the Little Belt, Castle and Crazy Mountains pursuant to 36 CFR 212.81. It shows established snowmobile routes as well as routes that are open to snowmobiles in areas closed to cross-country snowmobile travel. For detailed information about summer motorized routes see the Motor Vehicle Use Map, which shows roads to access snowmobile areas that are open to highway vehicles during certain seasons.

The display of winter trail information on this map, or areas where snowmobiles are not restricted should not be interpreted as encouraging or inviting use, or to imply that the area, trail or route is passable, actively maintained, or safe for travel. Seasonal weather conditions and natural events may render some routes and areas impassible for extended periods, even those that are groomed. Areas that do not prohibit cross-country snowmobile travel may contain dangerous or impassible terrain. Dangerous winter driving conditions will prevail on all routes, including plowed roads. This map does not indicate whether a road is plowed or not. Check with the Ranger Districts for specific information on road conditions.



## DEFINITIONS

**Snowmobile:** – Snowmobile. An over-snow vehicle that operates on a track, uses one or more skis for steering, and has handle-bar steering and a seat designed to be straddled by the operator. (FSM 2350.05)

In the Little Belt, Castle, and Crazy Mountain Ranges of the Helena-Lewis and Clark National Forest, only snowmobiles as defined in the FSM 2350.05 are allowed on designated snowmobile trails or areas designated as open for cross-country snowmobiling.

## PROHIBITIONS

It is prohibited to possess or operate an over-snow vehicle on National Forest System lands in violation of restriction or prohibition established pursuant to 36 CFR 212, subpart C (36 CFR 261.14).

Violations of 36 CFR 261.14 are subject to a fine of up to \$5000 or imprisonment for up to 6 months or both (U.S.C. 3571(e)). This prohibition applies regardless of the presence or absence of signs.

Roads, trails and areas may also be subject to temporary, emergency closures, and visitors must comply with signs notifying them of such restrictions. A National Forest may issue an order to close a road, trail, or area on a temporary basis to protect the life, health, or safety of forest visitors or the natural and cultural resources in these areas. Such temporary and/or emergency closures are consistent with the Travel Management Rule (36 CFR 212.52(b); 36 CFR 261 subpart B).

## GENERAL RESTRICTIONS ON SNOWMOBILE TRAVEL DECEMBER 1 - MAY 15:

Snowmobiles are only allowed to travel through areas closed to cross-country snowmobiling on routes specifically designated as open to snowmobile as shown on this map.

Snowmobile travel along designated routes that go through an area closed to cross-country snowmobiling is allowed within the standard width of a road right-of-way (normally 66-foot wide, unless signed otherwise) for turning around or avoiding obstructions as long as: 1) no new permanent routes are created by this activity, 2) existing vegetation is not killed or removed, and 3) no damage to soil or water resources occurs.

In the Little Belt, Castle and Crazy Mountains cross-country snowmobile travel is allowed between December 1 and May 15.

**Trails and Roads that define the boundaries between areas closed and open to cross-country snowmobile travel are OPEN to snowmobile traffic.**

## Avalanche Safety

What conditions are needed for an avalanche to happen?

◆ **Terrain:** The slope must be steeper than about 30 degrees and most often steeper than about 35 degrees. Slopes less than about 30 degrees are generally not steep enough to avalanche.

◆ **Snow pack:** The snow must be unstable. Mountain snowpacks are a series of layers stacked on top of one another. Some of the layers are hard and strong, some of them are soft and weak. The snowpack is unstable when a harder stronger layer sets on top of a softer weaker layer and the soft weak layer can barely support the hard strong layer above it.

◆ **Trigger:** A trigger provides the stress that causes the weak layer to collapse and the snowpack to avalanche. A trigger could be additional weight from more snow or it could be you.

Be Informed, Be Trained!

This information is from the Forest Service National Avalanche Center web site, which has online avalanche awareness & skills training:  
<http://www.fsavalanche.org/>

The Gallatin National Forest Avalanche Center in Bozeman offers classes and more local condition information: <http://www.mtavalanche.com/>

### Low Risk Travel - Snowmobilers

Low Risk Travel means you must Think Like An Avalanche. When you Think Like An Avalanche you base your decisions on objective data like observations and stability tests that reflect whether a slope is liable to slide. Never let your desire to ride a certain line blind you to what your gathered data and observations are telling you; don't deny reality.

- ◆ Always choose the safest possible route. Stick to low angle ridges and dense trees.
- ◆ If you must expose multiple people, stay well spread out.
- ◆ Be careful riding in creek bottoms or drainages with steep sides that could avalanche.
- ◆ Avoid stopping in or beneath avalanche paths.

### While highmarking or climbing steep hills

- ◆ Always highmark **ONE AT A TIME**. Other riders should watch the climber from a safe spot in thick trees or out of the runout zone.
- ◆ **NEVER** ride up a potential avalanche slope to help a rider get unstuck. Many snowmobilers have killed their partners when they were trying to help.

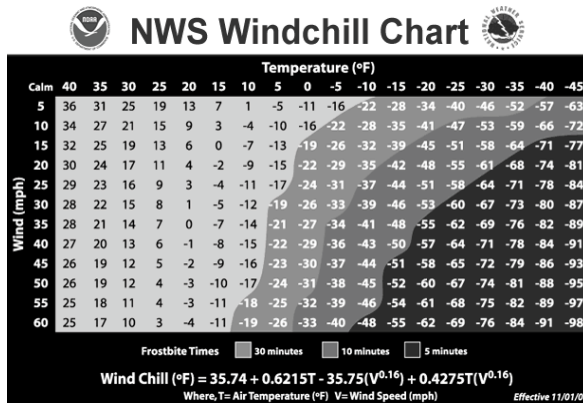
What are the RED FLAGS of unstable snowpack?

- ◆ Recent avalanche activity is the indisputable sign of instability. If you see recent avalanche activity the snowpack is unstable.
- ◆ Wind creates dangerous slabs; if the wind is blowing or has blown recently it has probably created dangerous wind slabs and increased the avalanche danger..
- ◆ Precipitation often increases the avalanche danger. The more snow that falls and the faster it falls the more apt it is to create dangerous conditions. And wet snow or rain falling on cold dry snow almost always causes avalanches.

◆ Cracks in the snow surface and/or "whooping" sounds mean that a weak layer is collapsing and that the snowpack is unstable. This is a sure sign of instability; stay on low angle slopes.

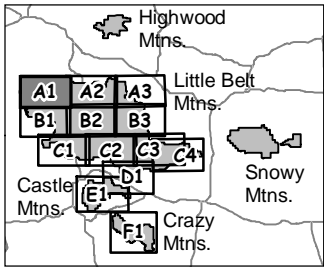
◆ If the temperature is rising; watch out! Often it will be cold powder skiing in the morning and then warm

up significantly in the afternoon. This rapid warming can transform fluffy powder into a dangerous slab. This newly formed slab can change stable powder conditions into unstable slab conditions in a very short time. In a settled more spring-like snowpack, if you are sinking into wet snow 6" or more, the snowpack surface is becoming saturated and wet slides could occur. Roller balls, snow snails and point releases all indicate wet unstable snow.

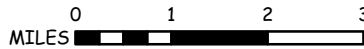


## Legend

- Routes open to snowmobile
- Roads open to Snowmobiling Through Closed Areas Dec. 1 - May 15.
- Area Open to Cross Country Dec. 1 - May 15
- Closed to Motorized Winter Travel
- Non Forest Service System Lands
- Lewis and Clark National Forest Boundary
- Cross-Country Ski Trails - No Snowmobiling Allowed
- Roads Open to Highway Vehicles - See Summer MVUM for Travel Restrictions
- Roads closed to highway vehicles during snowmobile season Shown for navigational purposes only.
- Other Public Roads
- Summer Trails - Shown for navigational purposes only. Trails are not open for snowmobile traffic unless in an open area OR as the feature defining the boundary of an open area.
- Township/Range Lines
- Section Line
- Forest Service Information Sites
- Loop/Trail Marker
- Snowmobile Parking Areas
- Snowmobile Warming Huts
- Cabin Rental
- Showdown Ski Area - No Snowmobiles Allowed!
- Campground
- Summits
- Lakes



Use this QR code to get more geopdf maps for our Forest, or use this link: <https://go.usa.gov/xXCsj>

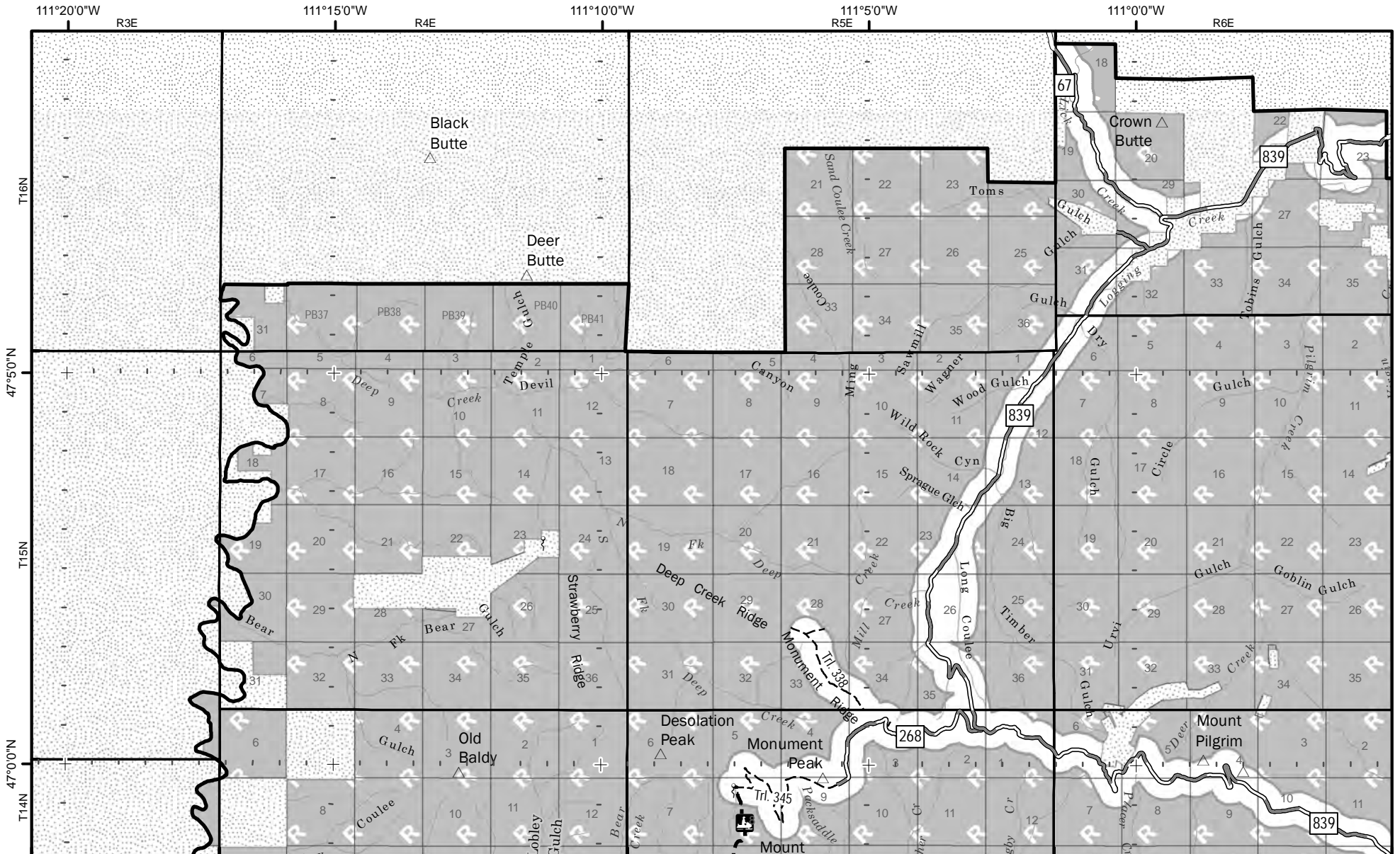


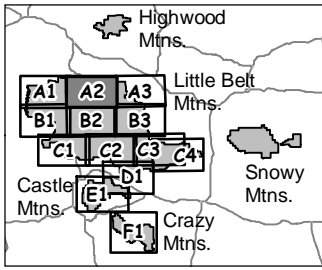
+ For GPS Navigation  
Grid: 5' ticks with 30" subticks

**Limited Legend**  
(See page 3 for complete legend)

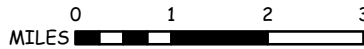
- Route Open to Snowmobiles Dec. - May 15
- Road open to Snowmobiles Dec. 1 - May 15 Through Areas Closed to Winter Motorized Travel
- Area Open to Cross Country Snowmobile Travel December 1 - May 15
- Area Closed to Motorized Winter Travel
- Non Forest Service System Lands

**Helena-Lewis and Clark National Forest** **A1**  
**Little Belt, Castle and Crazy Mountain**  
**Over-The-Snow Motor Vehicle Use Map**  
 This map is valid Nov. 8, 2018 until updated.  
**Logging Creek - Smith River**  
 Snowmobile use, cross country and on roads and trails, is authorized only during the period Dec. 1 - May 15.





Use this QR code to get more geopdf maps for our Forest, or use this link: <https://go.usa.gov/xXCsj>

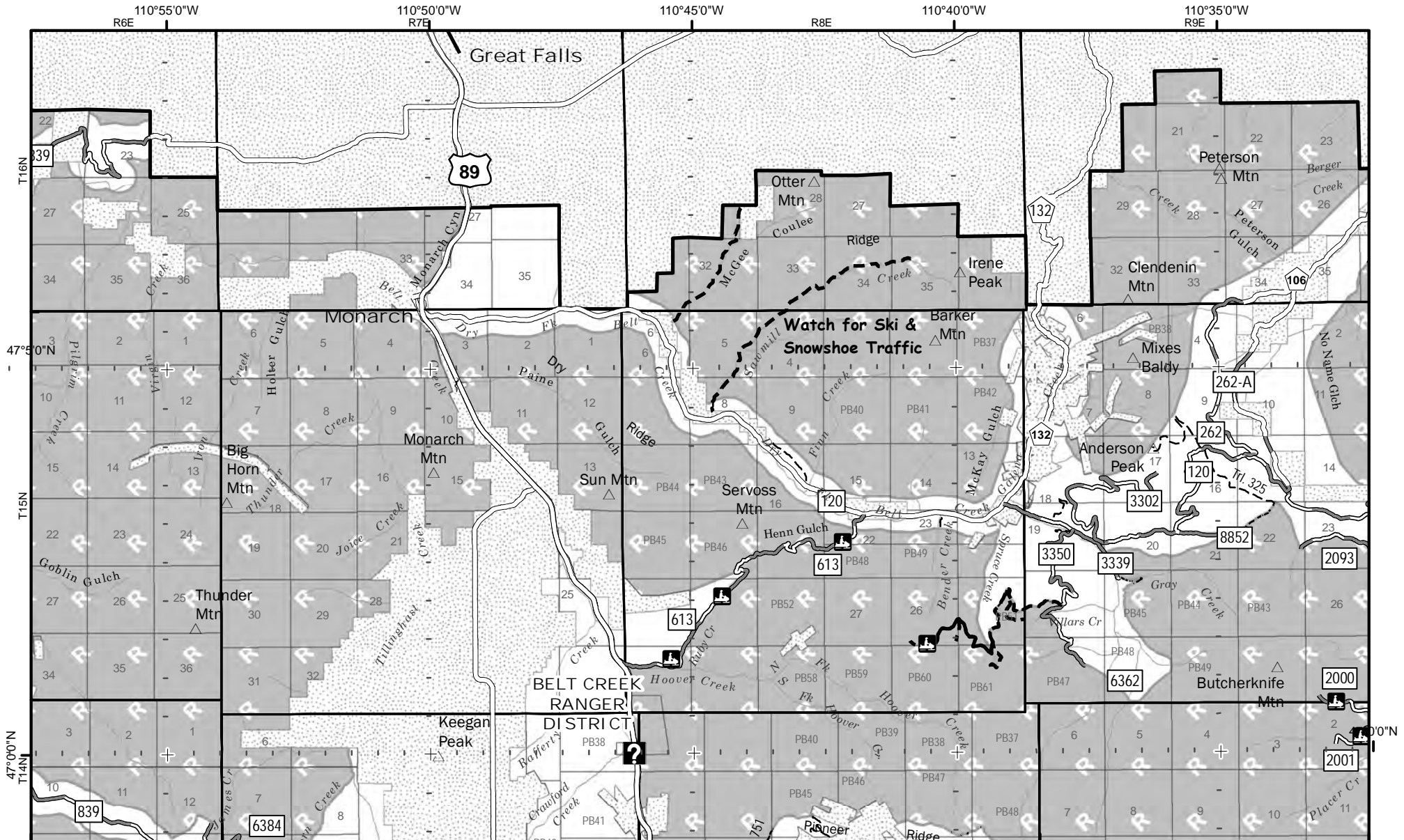


+ For GPS Navigation  
Grid: 5' ticks with 30" subticks

**Limited Legend**  
(See page 3 for complete legend)

- Route Open to Snowmobiles Dec. - May 15
- Road open to Snowmobiles Dec. 1 - May 15 Through Areas Closed to Winter Motorized Travel
- Area Open to Cross Country Snowmobile Travel December 1 - May 15
- Area Closed to Motorized Winter Travel
- Non Forest Service System Lands

**Helena-Lewis and Clark National Forest** **A2**  
**Little Belt, Castle and Crazy Mountain**  
**Over-The-Snow Motor Vehicle Use Map**  
 This map is valid Nov. 8, 2018 until updated.  
**Dry Fork-Pioneer Ridge**  
 Snowmobile use, cross country and on roads and trails, is authorized only during the period Dec. 1 - May 15.







# Helena-Lewis and Clark National Forest Little Belt, Castle and Crazy Mountain Over-The-Snow Motor Vehicle Use Map This map is valid Nov. 8, 2018 until updated.

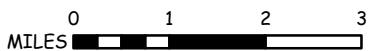
## Stanford-Dry Wolf

Snowmobile use, cross country and on roads and trails, is authorized only during the period Dec. 1 - May 15.

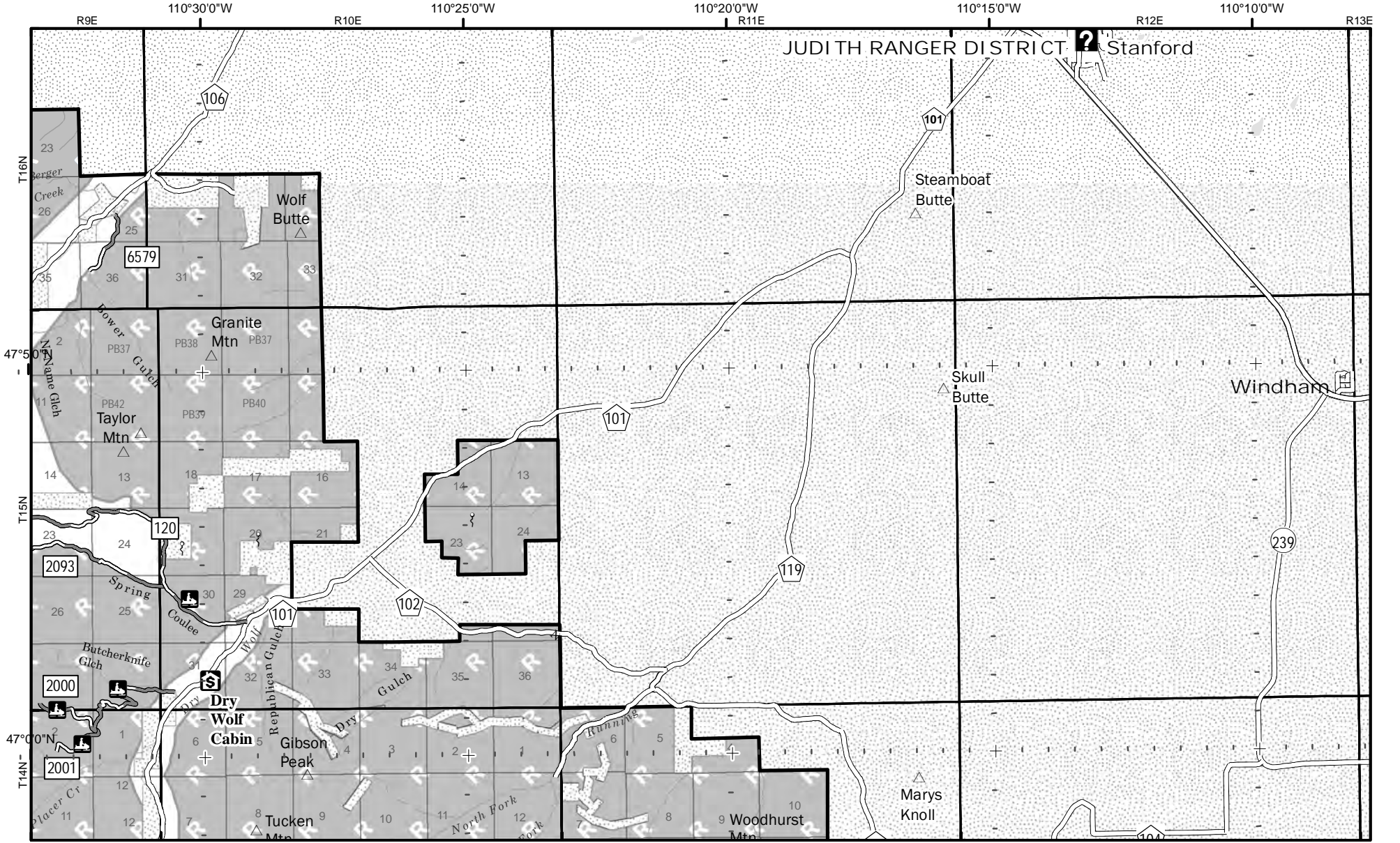
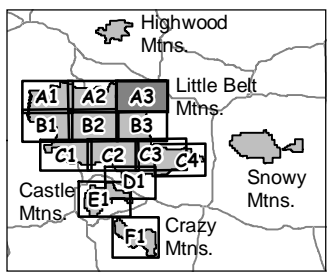
### Limited Legend (See page 3 for complete legend)

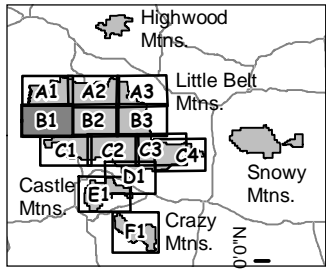
-  Route Open to Snowmobiles Dec. - May 15
-  Road open to Snowmobiles Dec. 1 - May 15 Through Areas Closed to Winter Motorized Travel
-  Area Open to Cross Country Snowmobile Travel December 1 - May 15
-  Area Closed to Motorized Winter Travel
-  Non Forest Service System Lands

Use this QR code to get more geopdf maps for our Forest, or use this link: <https://go.usa.gov/xXCsj>

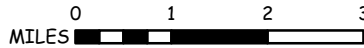


+ For GPS Navigation  
Grid: 5' ticks with 30" subticks





Use this QR code to get more geopdf maps for our Forest, or use this link:  
<https://go.usa.gov/xXCsJ>



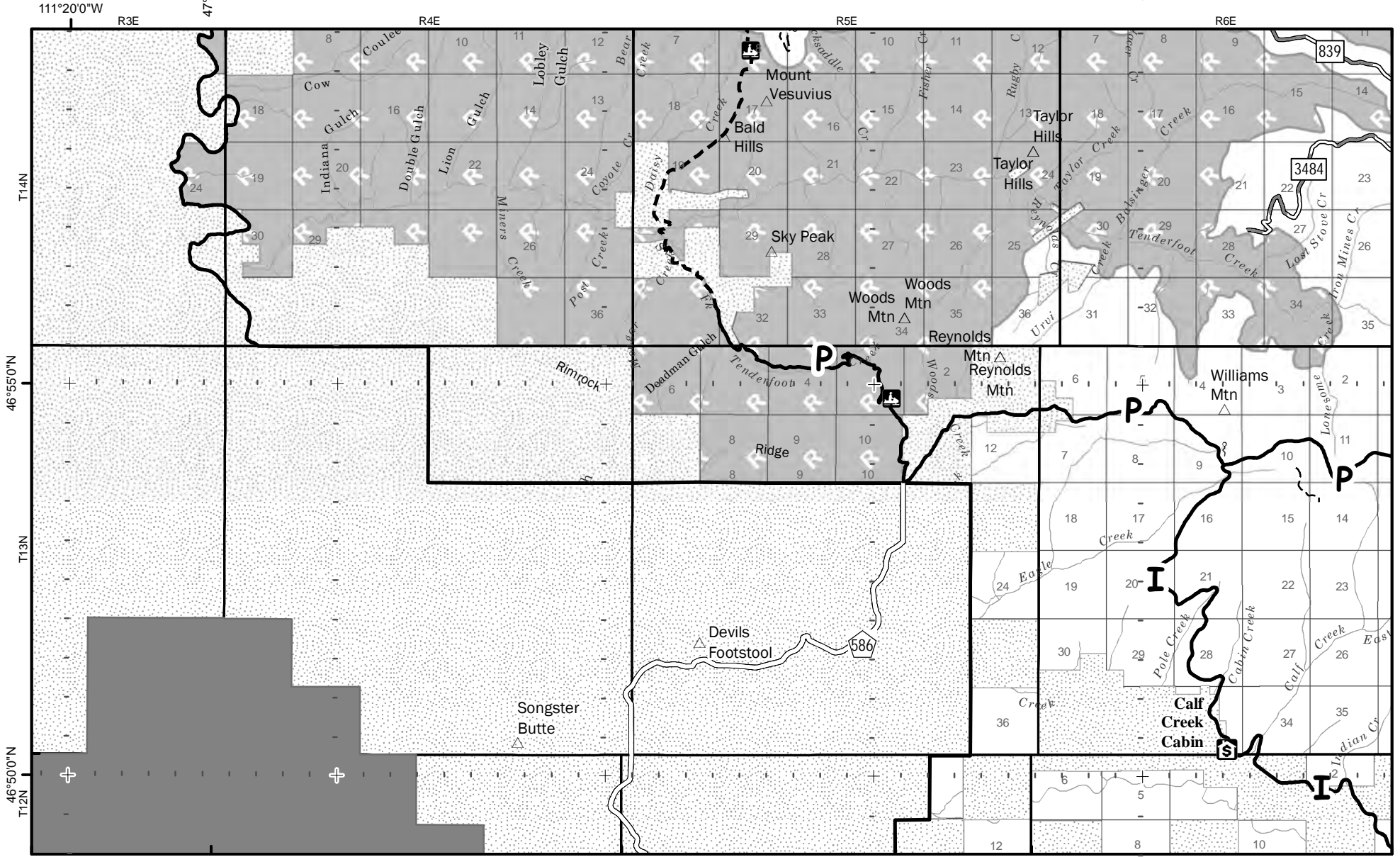
+ For GPS Navigation  
 Grid: 5" ticks with 30" subticks

**Limited Legend**  
 (See page 3 for complete legend)

- Route Open to Snowmobiles Dec. - May 15
- Road open to Snowmobiles Dec. 1 - May 15 Through Areas Closed to Winter Motorized Travel
- Area Open to Cross Country Snowmobile Travel December 1 - May 15
- Area Closed to Motorized Winter Travel
- Non Forest Service System Lands

**Helena-Lewis and Clark National Forest** **B1**  
**Little Belt, Castle and Crazy Mountain**  
**Over-The-Snow Motor Vehicle Use Map**  
 This map is valid Nov. 8, 2018 until updated.  
**Sheep Creek-Smith River**  
 Snowmobile use, cross country and on roads and trails, is authorized only during the period Dec. 1 - May 15.

47°0'0"N



111°20'0"W

T14N

46°55'0"N

T13N

46°50'0"N

R3E

R4E

R5E

R6E





# Helena-Lewis and Clark National Forest Little Belt, Castle and Crazy Mountain Over-The-Snow Motor Vehicle Use Map This map is valid Nov. 8, 2018 until updated.

## Kings Hill

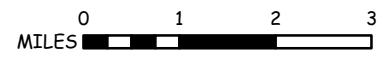
Snowmobile use, cross country and on roads and trails, is authorized only during the period Dec. 1 - May 15.

47°00'N

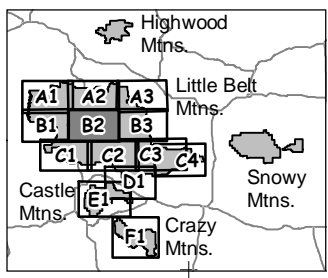
### Limited Legend (See page 3 for complete legend)

-  Route Open to Snowmobiles Dec. - May 15
-  Road open to Snowmobiles Dec. 1 - May 15 Through Areas Closed to Winter Motorized Travel
-  Area Open to Cross Country Snowmobile Travel December 1 - May 15
-  Area Closed to Motorized Winter Travel
-  Non Forest Service System Lands

Use this QR code to get more geopdf maps for our Forest, or use this link:  
<https://go.usa.gov/xXCsj>



+ For GPS Navigation  
Grid: 5' ticks with 30" subticks



47°00'N

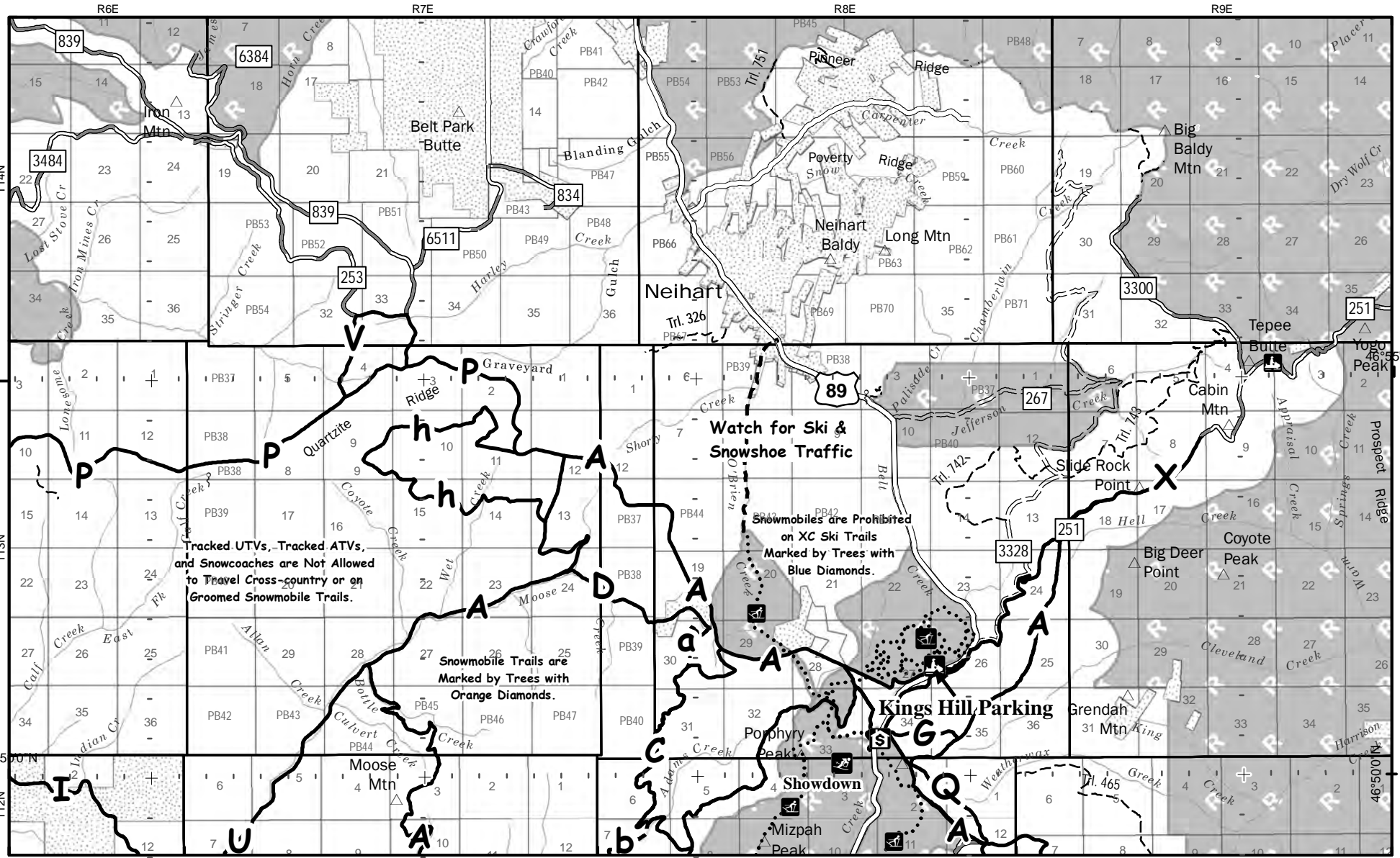
46°55'N

46°50'N

46°50'N

46°50'N

46°50'N



Tracked UTVs, Tracked ATVs, and Snowcoaches are Not Allowed to Travel Cross-country or on Groomed Snowmobile Trails.

Watch for Ski & Snowshoe Traffic

Snowmobiles are Prohibited on XC Ski Trails Marked by Trees with Blue Diamonds.

Snowmobile Trails are Marked by Trees with Orange Diamonds.



Kings Hill Parking

Helena-Lewis and Clark National Forest  
Little Belt, Castle and Crazy Mountain  
Over-The-Snow Motor Vehicle Use Map  
This map is valid Nov. 8, 2018 until updated.

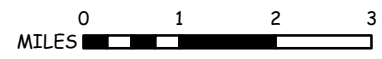
# Judith-Yogo

Snowmobile use, cross country and on roads and trails, is authorized only during the period Dec. 1 - May 15.

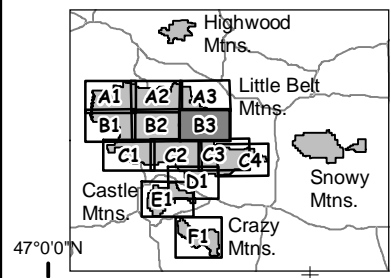
### Limited Legend (See page 3 for complete legend)

-  Route Open to Snowmobiles Dec. - May 15
-  Road open to Snowmobiles Dec. 1 - May 15 Through Areas Closed to Winter Motorized Travel
-  Area Open to Cross Country Snowmobile Travel December 1 - May 15
-  Area Closed to Motorized Winter Travel
-  Non Forest Service System Lands

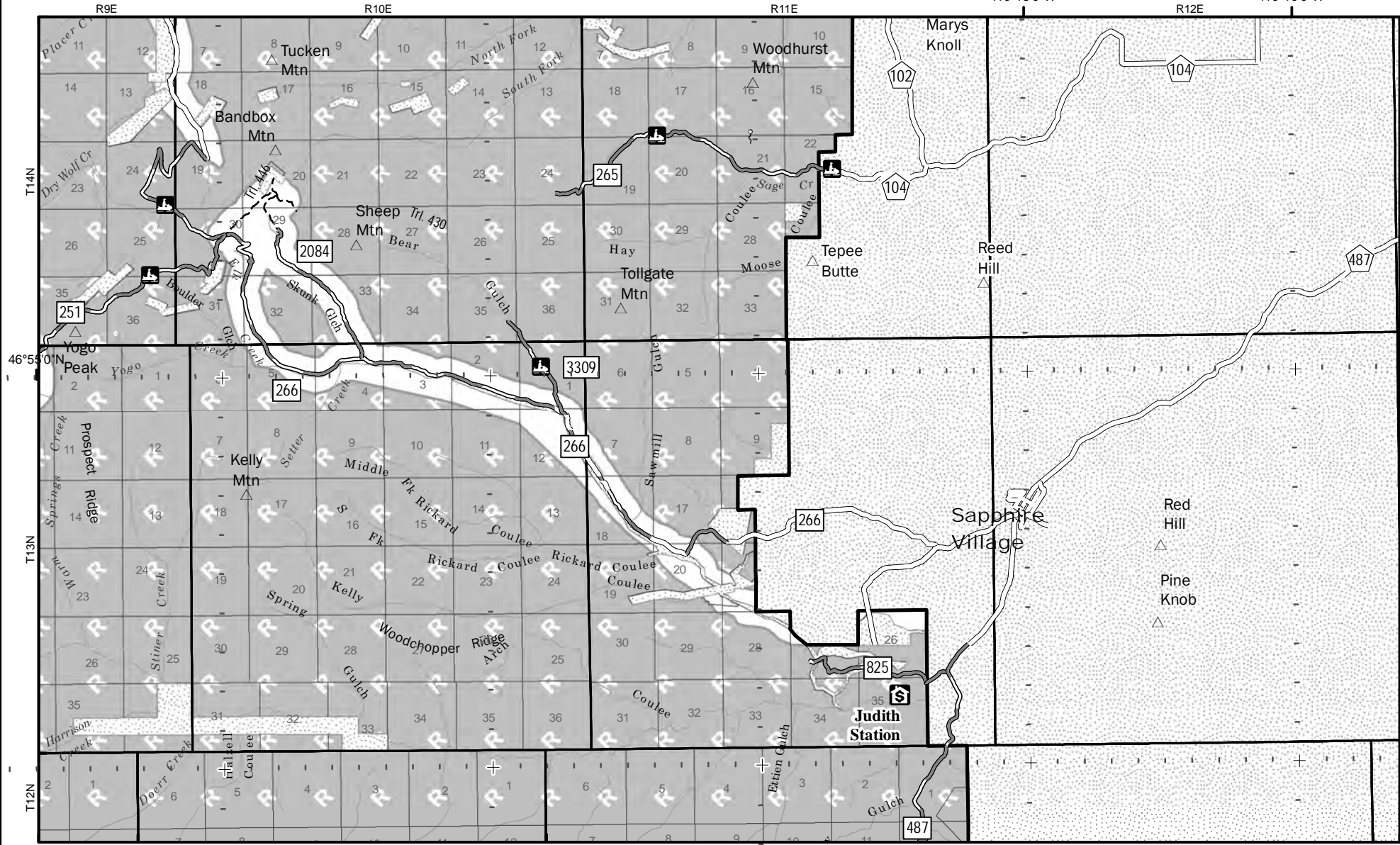
Use this QR code to get more geopdf maps for our Forest, or use this link:  
<https://go.usa.gov/xXCsj>



+ For GPS Navigation  
Grid: 5' ticks with 30" subticks



47°00'N



46°55'0"N

T13N

T12N

110°15'0"W

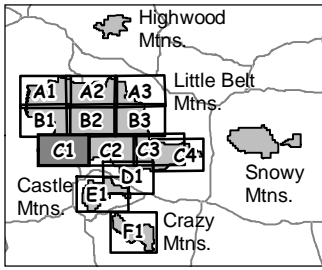
110°10'0"W

R9E

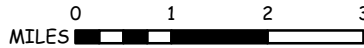
R10E

R11E

R12E



Use this QR code to get more geopdf maps for our Forest, or use this link: <https://go.usa.gov/xXCsj>

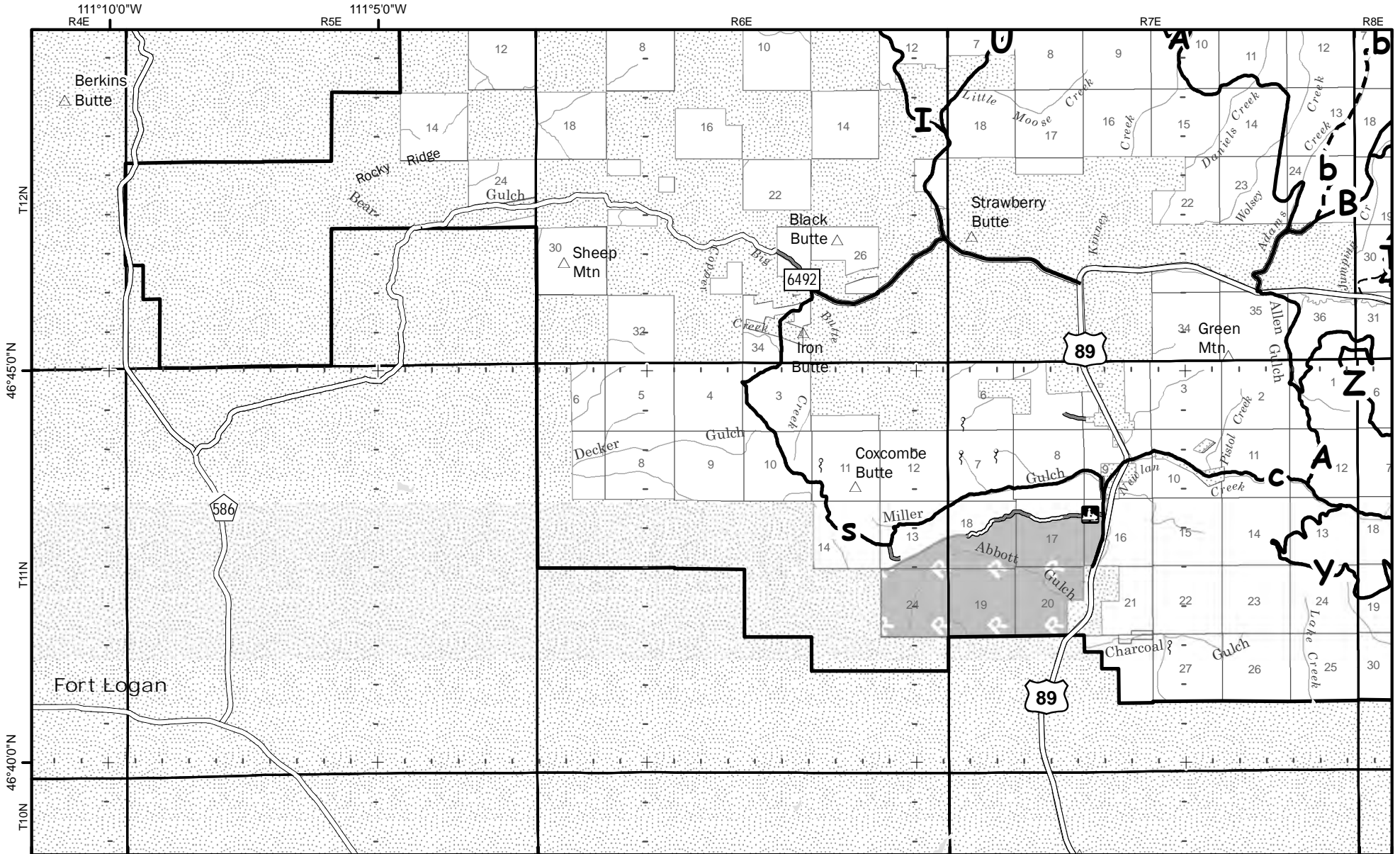


+ For GPS Navigation  
Grid: 5' ticks with 30" subticks

**Limited Legend**  
(See page 3 for complete legend)

- Route Open to Snowmobiles Dec. - May 15
- Road open to Snowmobiles Dec. 1 - May 15 Through Areas Closed to Winter Motorized Travel
- Area Open to Cross Country Snowmobile Travel December 1 - May 15
- Area Closed to Motorized Winter Travel
- Non Forest Service System Lands +

**Helena-Lewis and Clark National Forest** C1  
**Little Belt, Castle and Crazy Mountain**  
**Over-The-Snow Motor Vehicle Use Map**  
 This map is valid Nov. 8, 2018 until updated.  
**Miller Gulch-Sheep Creek**  
 Snowmobile use, cross country and on roads and trails, is authorized only during the period Dec. 1 - May 15.



# Helena-Lewis and Clark National Forest Little Belt, Castle and Crazy Mountain Over-The-Snow Motor Vehicle Use Map This map is valid Nov. 8, 2018 until updated.

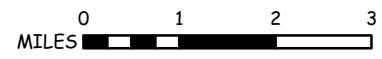
## Deadman-Spring Creek

Snowmobile use, cross country and on roads and trails, is authorized only during the period Dec. 1 - May 15.

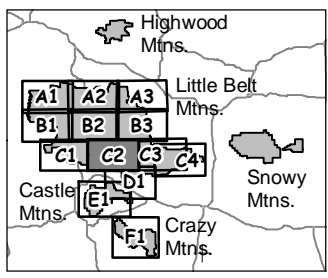
### Limited Legend (See page 3 for complete legend)

- Route Open to Snowmobiles Dec. - May 15
- Road open to Snowmobiles Dec. 1 - May 15 Through Areas Closed to Winter Motorized Travel
- Area Open to Cross Country Snowmobile Travel December 1 - May 15
- Area Closed to Motorized Winter Travel
- Non Forest Service System Lands

Use this QR code to get more geopdf maps for our Forest, or use this link:  
<https://go.usa.gov/xXCsj>



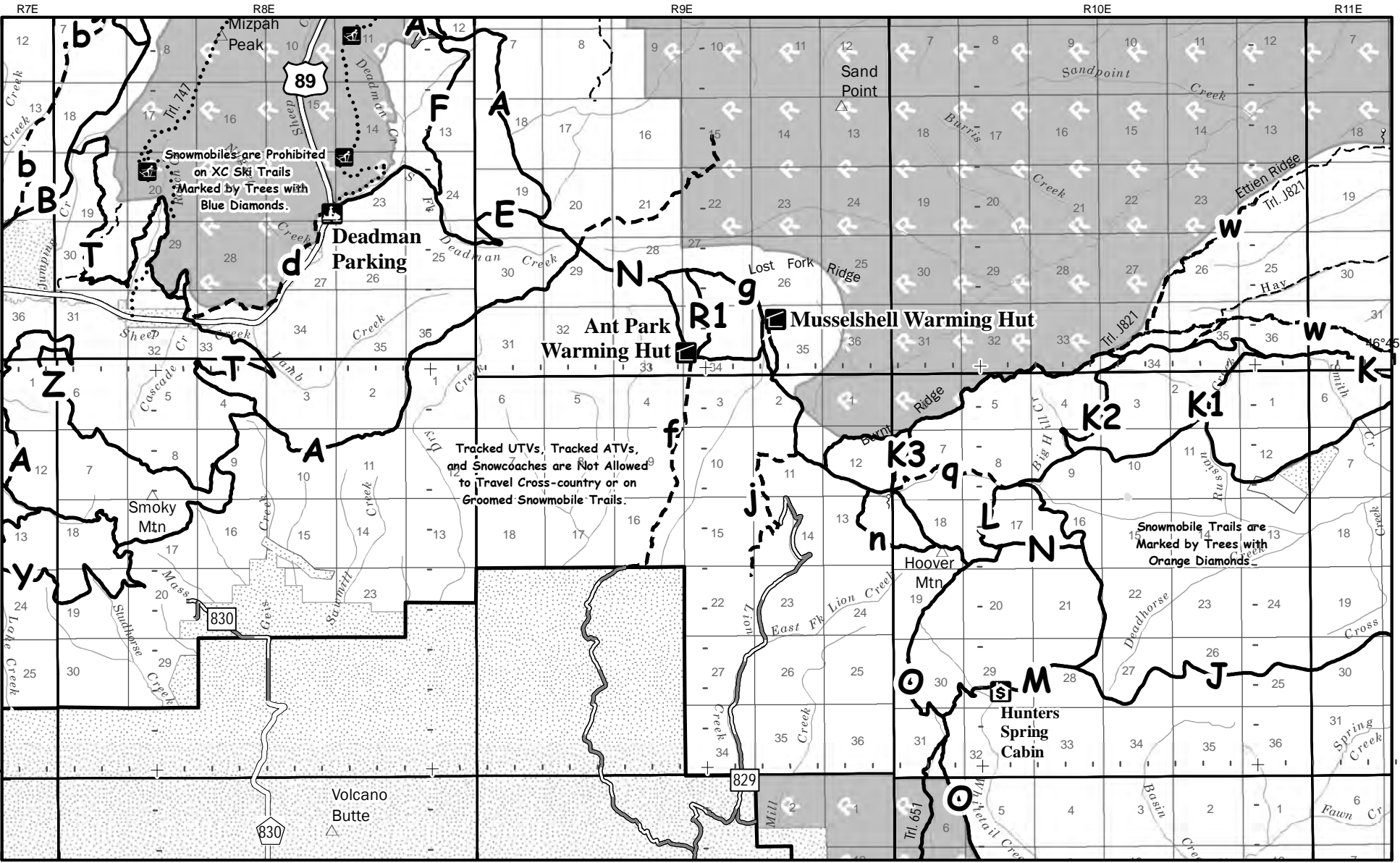
+ For GPS Navigation  
Grid: 5' ticks with 30" subticks



46°50'00"N

46°45'00"N

46°40'00"N



Snowmobiles are Prohibited on XC Ski Trails Marked by Trees with Blue Diamonds.

Tracked UTVs, Tracked ATVs, and Snowcoaches are Not Allowed to Travel Cross-country or on Groomed Snowmobile Trails.

Snowmobile Trails are Marked by Trees with Orange Diamonds.

46°50'00"N

# Helena-Lewis and Clark National Forest Little Belt, Castle and Crazy Mountain Over-The-Snow Motor Vehicle Use Map This map is valid Nov. 8, 2018 until updated.

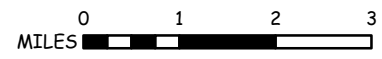
## South Fork Judith-Jellison

Snowmobile use, cross country and on roads and trails, is authorized only during the period Dec. 1 - May 15.

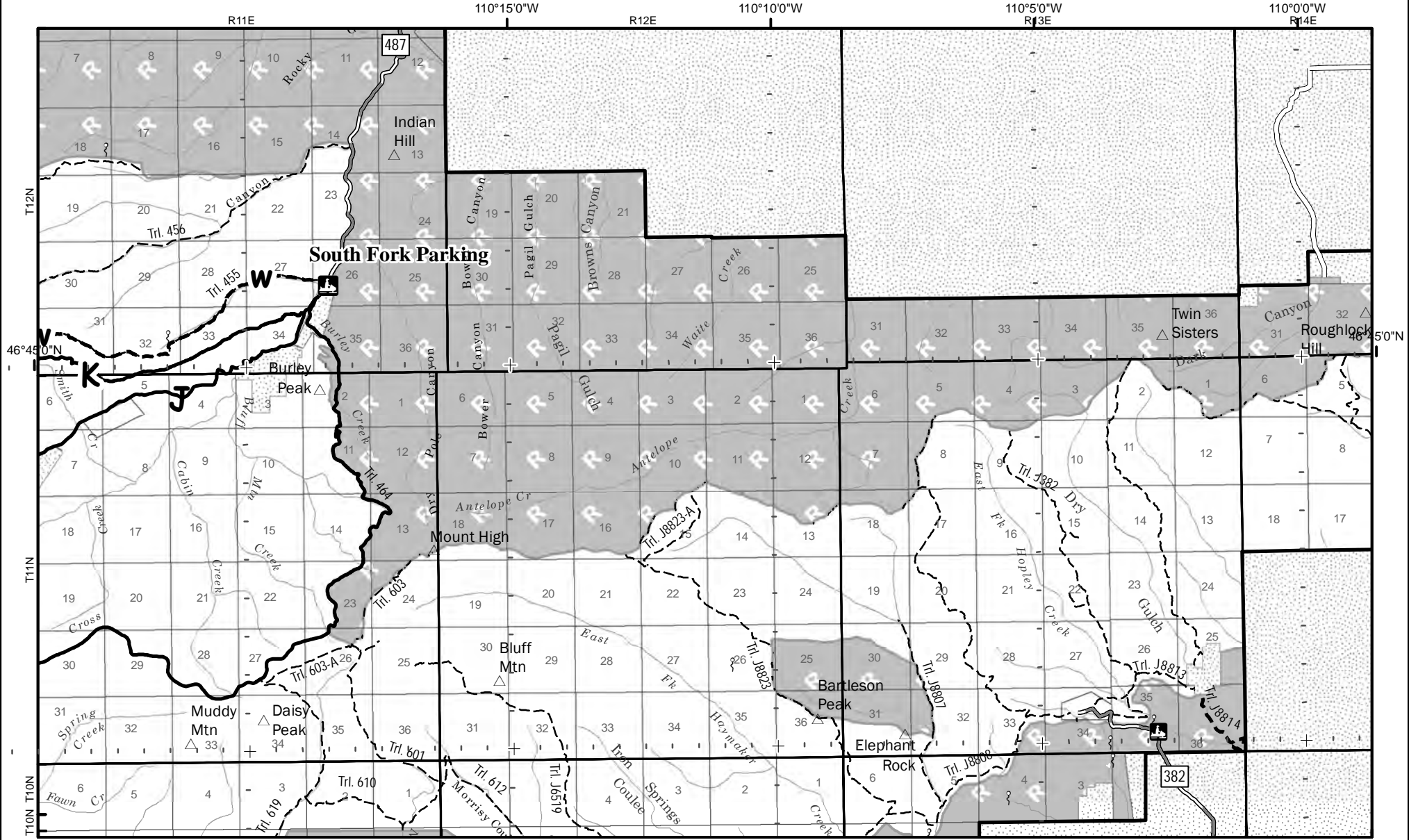
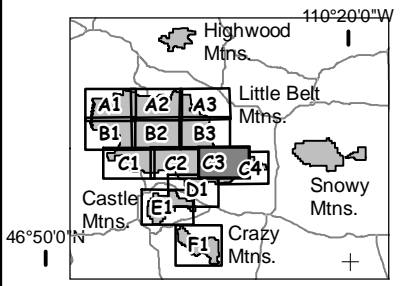
### Limited Legend (See page 3 for complete legend)

- Route Open to Snowmobiles Dec. - May 15
- Road open to Snowmobiles Dec. 1 - May 15 Through Areas Closed to Winter Motorized Travel
- Area Open to Cross Country Snowmobile Travel December 1 - May 15
- Area Closed to Motorized Winter Travel
- Non Forest Service System Lands

Use this QR code to get more geopdf maps for our Forest, or use this link:  
<https://go.usa.gov/xXCsj>



+ For GPS Navigation  
Grid: 5' ticks with 30" subticks



# Helena-Lewis and Clark National Forest Little Belt, Castle and Crazy Mountain Over-The-Snow Motor Vehicle Use Map This map is valid Nov. 8, 2018 until updated.

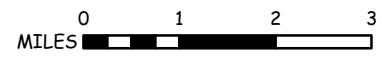
## Southeast Little Belts

Snowmobile use, cross country and on roads and trails, is authorized only during the period Dec. 1 - May 15.

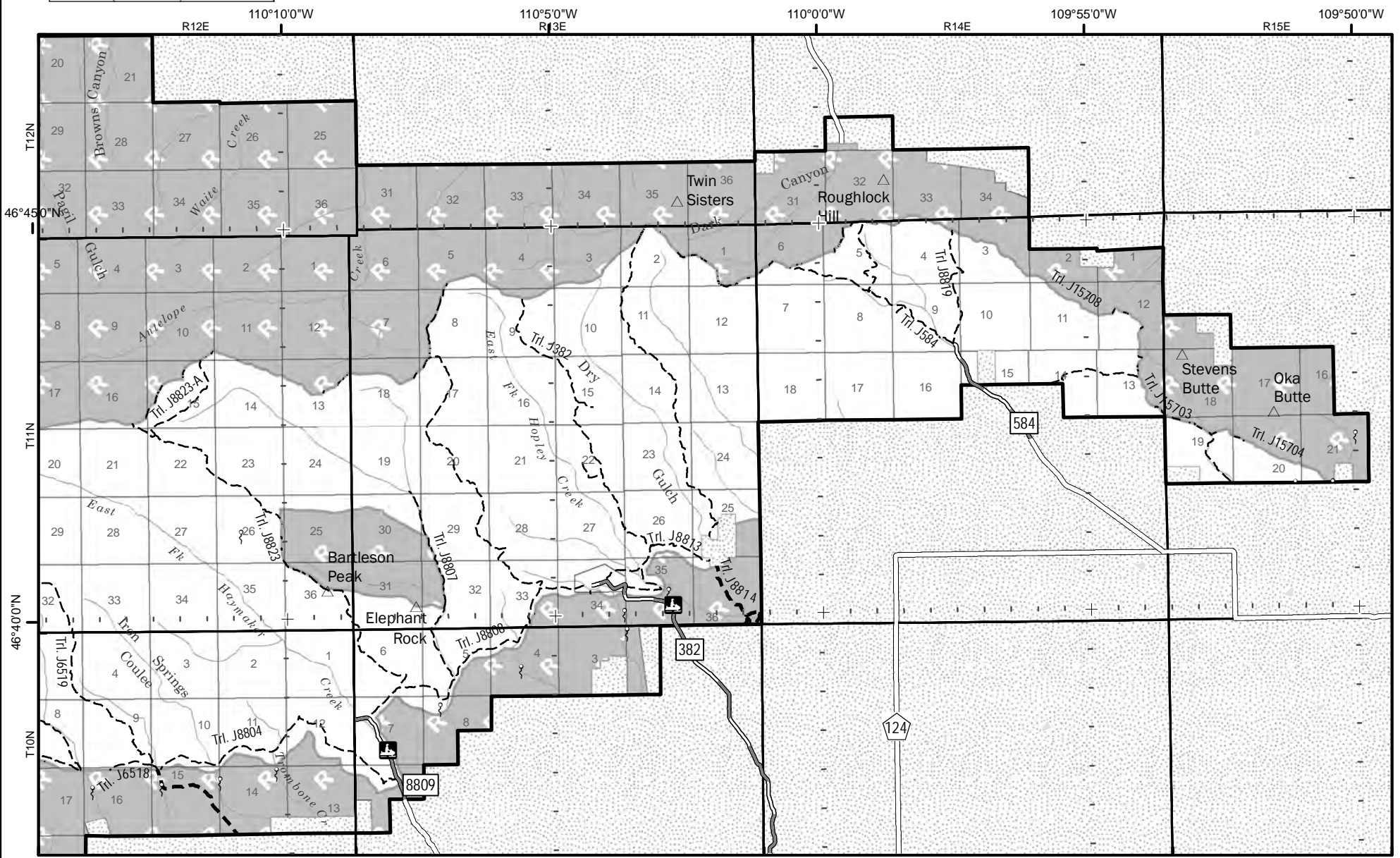
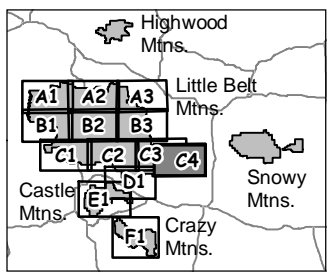
### Limited Legend (See page 3 for complete legend)

- Route Open to Snowmobiles Dec. - May 15
- Road open to Snowmobiles Dec. 1 - May 15 Through Areas Closed to Winter Motorized Travel
- Area Open to Cross Country Snowmobile Travel December 1 - May 15
- Area Closed to Motorized Winter Travel
- Non Forest Service System Lands

Use this QR code to get more geopdf maps for our Forest, or use this link:  
<https://go.usa.gov/xXCsJ>



+ For GPS Navigation  
Grid: 5' ticks with 30" subticks




# Helena-Lewis and Clark National Forest Little Belt, Castle and Crazy Mountain Over-The-Snow Motor Vehicle Use Map This map is valid Nov. 8, 2018 until updated.

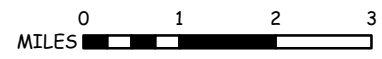
## Spring Creek-Lion Creek

Snowmobile use, cross country and on roads and trails, is authorized only during the period Dec. 1 - May 15.

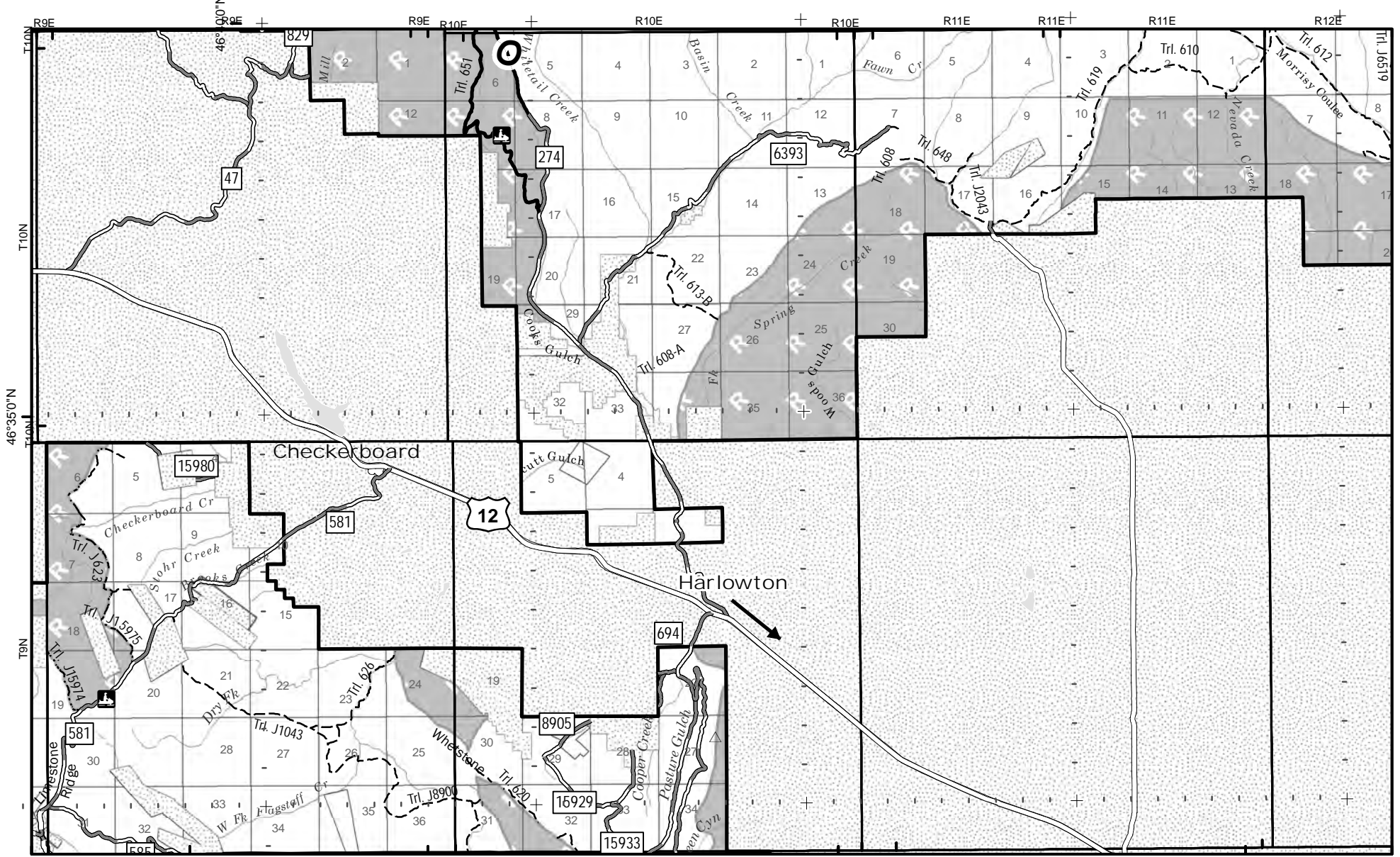
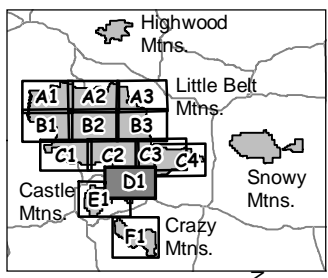
### Limited Legend (See page 3 for complete legend)

-  Route Open to Snowmobiles Dec. - May 15
-  Road open to Snowmobiles Dec. 1 - May 15 Through Areas Closed to Winter Motorized Travel
-  Area Open to Cross Country Snowmobile Travel December 1 - May 15
-  Area Closed to Motorized Winter Travel
-  Non Forest Service System Lands

Use this QR code to get more geopdf maps for our Forest, or use this link: <https://go.usa.gov/xXCsJ>



+ For GPS Navigation  
Grid: 5' ticks with 30" subticks



# Helena-Lewis and Clark National Forest Little Belt, Castle and Crazy Mountain Over-The-Snow Motor Vehicle Use Map This map is valid Nov. 8, 2018 until updated.

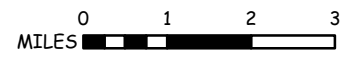
## Castle Mountains

Snowmobile use, cross country and on roads and trails, is authorized only during the period Dec. 1 - May 15.

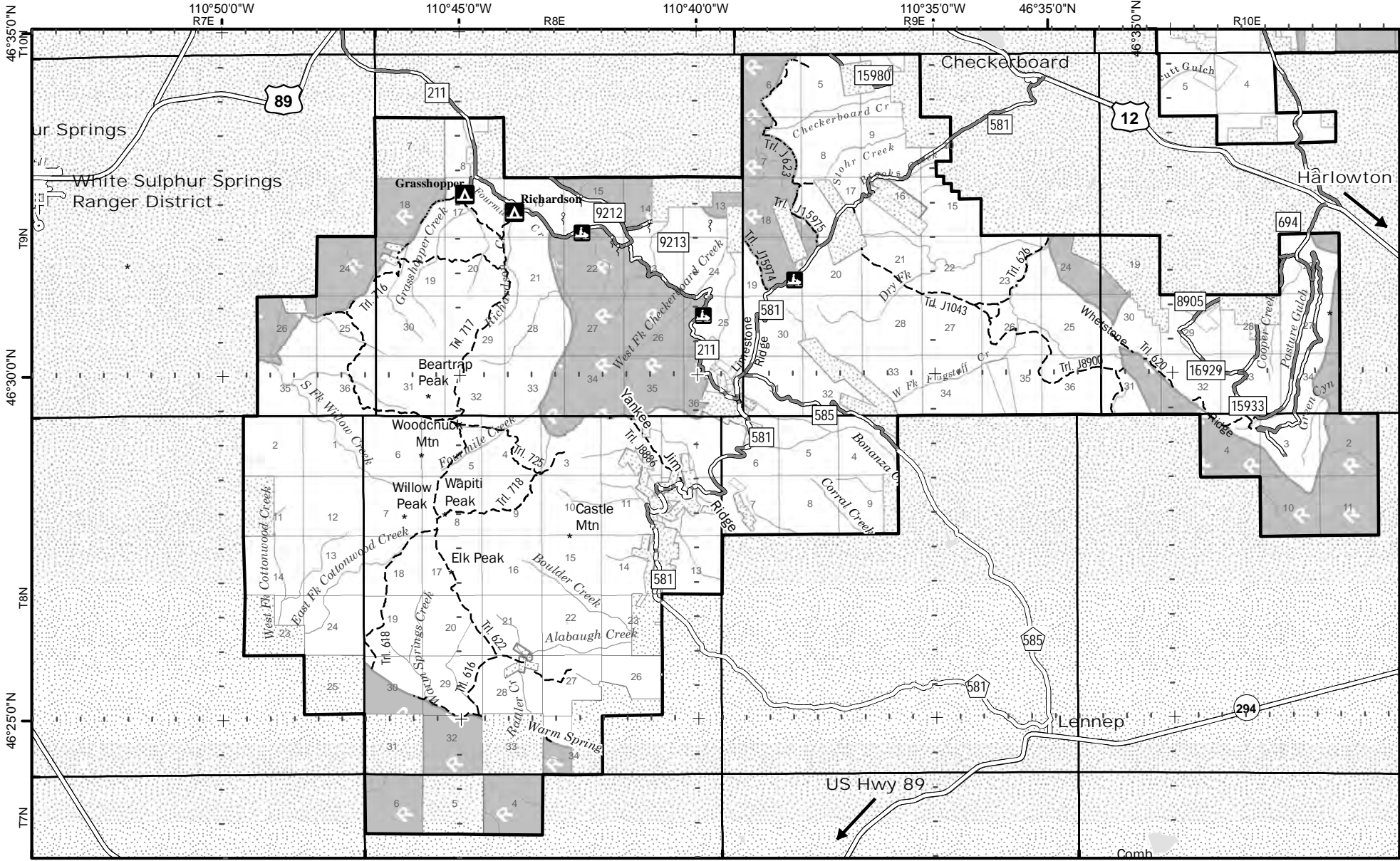
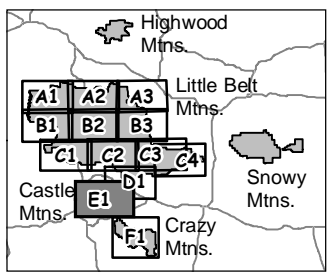
### Limited Legend (See page 3 for complete legend)

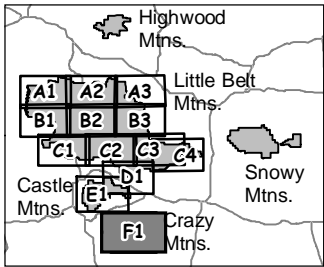
- Route Open to Snowmobiles Dec. - May 15
- Road open to Snowmobiles Dec. 1 - May 15 Through Areas Closed to Winter Motorized Travel
- Area Open to Cross Country Snowmobile Travel December 1 - May 15
- Area Closed to Motorized Winter Travel
- Non Forest Service System Lands

Use this QR code to get more geopdf maps for our Forest, or use this link:  
<https://go.usa.gov/xXCsJ>

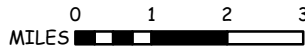


E For GPS Navigation  
Grid: 5' ticks with 30" subticks





Use this QR code to get more geopdf maps for our Forest, or use this link: <https://go.usa.gov/xXCsj>



E For GPS Navigation  
Grid: 5' ticks with 30" subticks

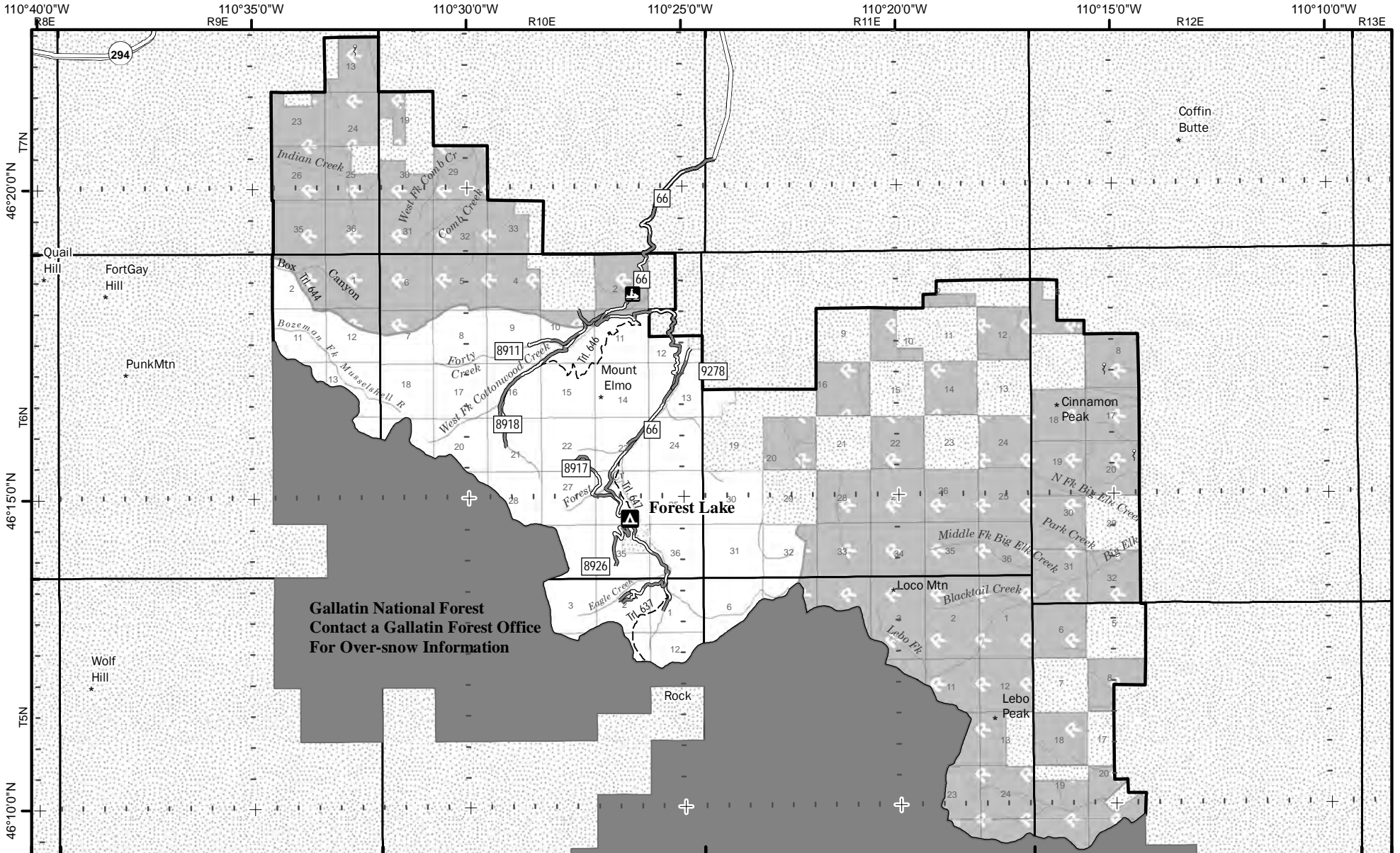
**Limited Legend**  
(See page 3 for complete legend)

- Route Open to Snowmobiles Dec. - May 15
- Road open to Snowmobiles Dec. 1 - May 15 Through Areas Closed to Winter Motorized Travel
- Area Open to Cross Country Snowmobile Travel December 1 - May 15
- Area Closed to Motorized Winter Travel
- Non Forest Service System Lands

**Helena-Lewis and Clark National Forest F1**  
**Little Belt, Castle and Crazy Mountain**  
**Over-The-Snow Motor Vehicle Use Map**  
This map is valid Nov. 8, 2018 until updated.

# Crazy Mountains

Snowmobile use, cross country and on roads and trails, is authorized only during the period Dec. 1 - May 15.



**Gallatin National Forest**  
Contact a Gallatin Forest Office  
For Over-snow Information